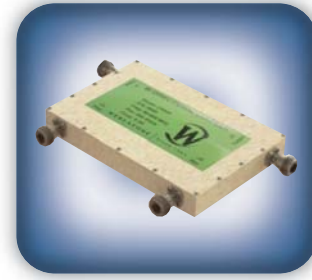




**DECADES AHEAD<sup>®</sup>**  
high power RF devices

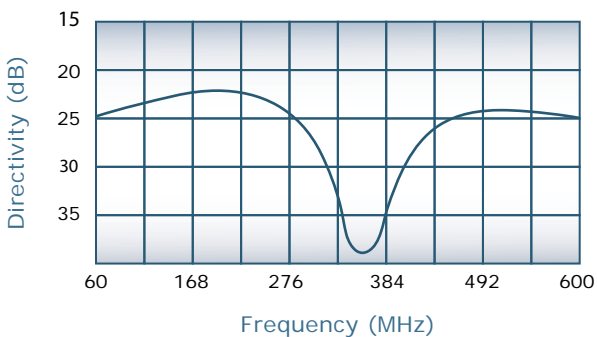
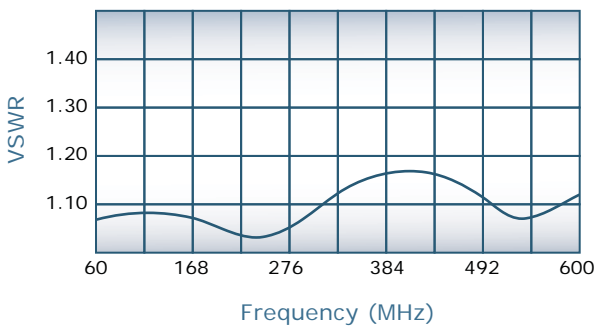
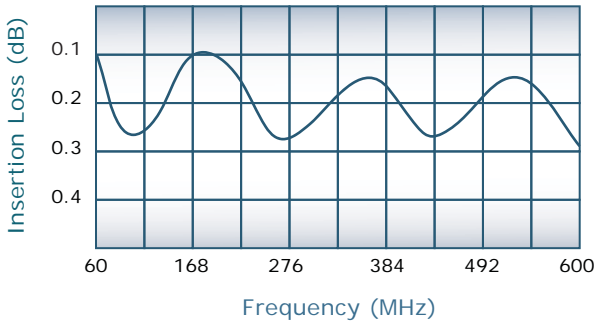
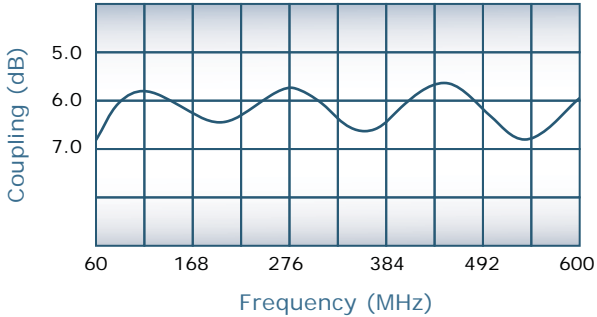
**Werlatone<sup>®</sup>, Inc.**

17 Jon Barrett Road Patterson, New York 12563  
T (845) 278 2220      www.werlatone.com  
F (845) 278 3440      sales@werlatone.com



**6 dB Bi-Directional Coupler**  
**Model C6933**

Frequency:	60 - 600 MHz
Power:	200 W CW
Coupling:	6 ± 1.0 dB Nom.
Insertion Loss:	0.35 dB Max.
VSWR:	1.20:1 Max.
Flatness:	1.0 dB Max.
Directivity:	20 dB Min.



**Mismatch Tolerant<sup>®</sup> Design**

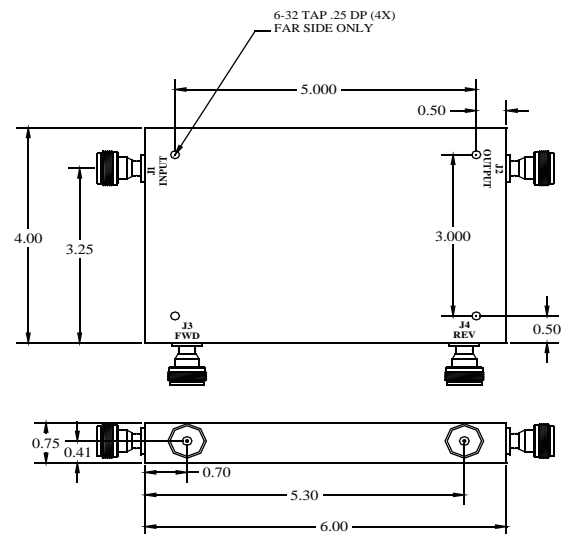
**Notes**

- Will operate continuously, at rated power, into an open or short condition
- All specifications guaranteed
- Test data provided with each unit shipped
- Weight: 1 Pound
- Operating Temperature: -55°C to +75°C

**Mismatch Tolerant<sup>®</sup>** is a registered trademark of Werlatone, Inc.

**Connector Configurations**

Model	J1, J2 (Main Line)	J3, J4 (Coupled Ports)
C6933-10	N Female	N Female
C6933-12	N Female	SMA
C6933-102	SMA	SMA



Specifications subject to change without notice



**Send Us Your Specs for Custom Designs**