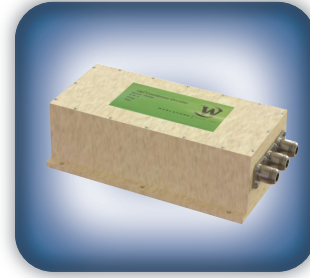




DECADES AHEAD[®]
high power RF devices

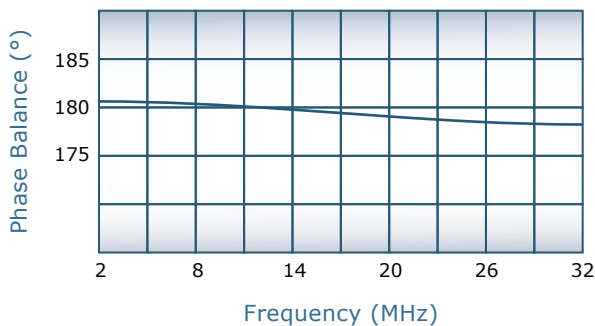
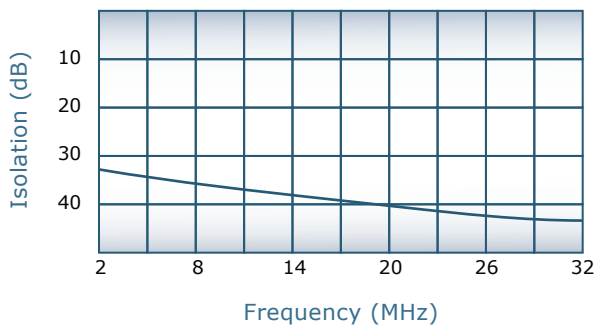
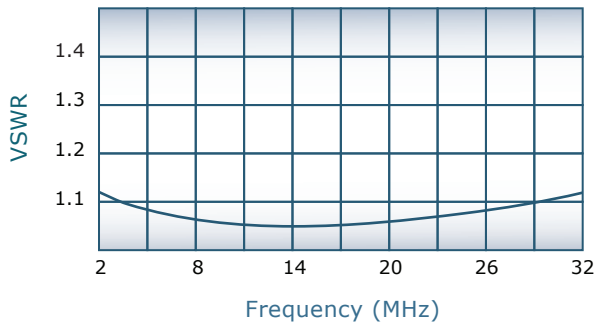
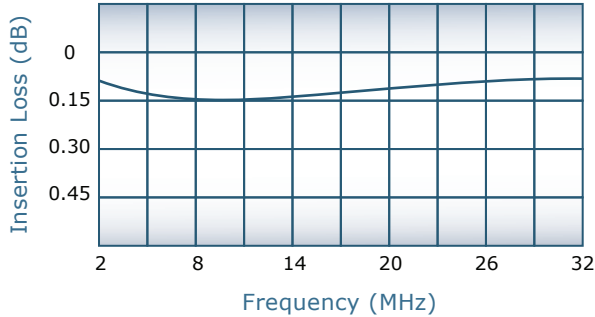


Werlatone[®], Inc.

17 Jon Barrett Road Patterson, New York 12563
T (845) 278 2220 www.werlatone.com
F (845) 278 3440 sales@werlatone.com

180° Hybrid Combiner/Divider
Model H6286

Frequency:	2 - 32 MHz
Power:	1,000 W CW
Insertion Loss:	0.3 dB Max.
VSWR:	1.30:1 Max.
Isolation:	20 dB Min.
Phase Balance:	180° ± 5° Max.
Amplitude Balance:	0.1 dB Max.

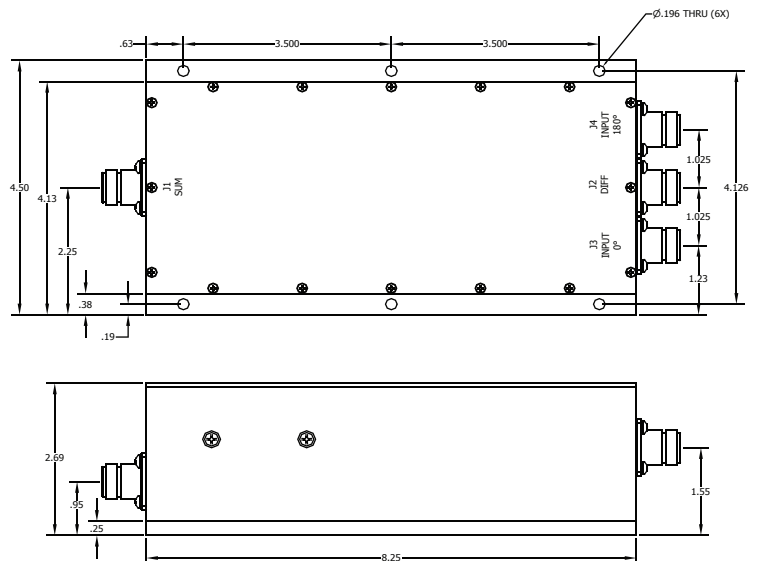


Notes

- All specifications guaranteed
- Test data provided with each unit shipped
- Operating Temperature: -55°C to +75°C
- Weight: 4 Pounds 4 Ounces

Connector Configurations

Model	J1 (Sum Port)	J3,J4 (0°, 180°)	J2 (Diff Port)
H6286-10	N Female	N Female	N Female
H6286-12	N Female	SMA	SMA
H6286-102	SMA	SMA	SMA



Specifications subject to change without notice



Send Us Your Specs for Custom Designs