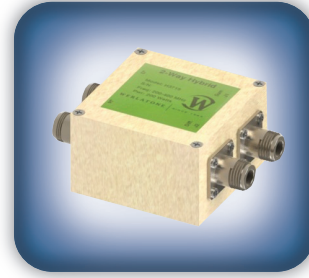




DECADES AHEAD[®]
high power RF devices

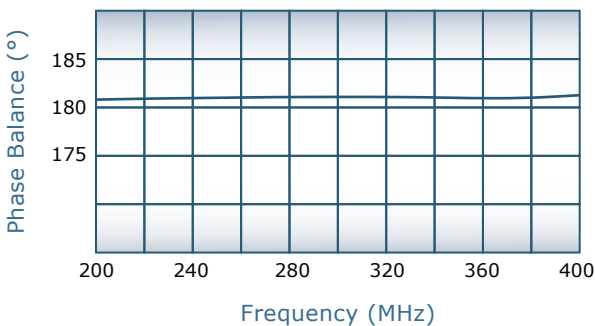
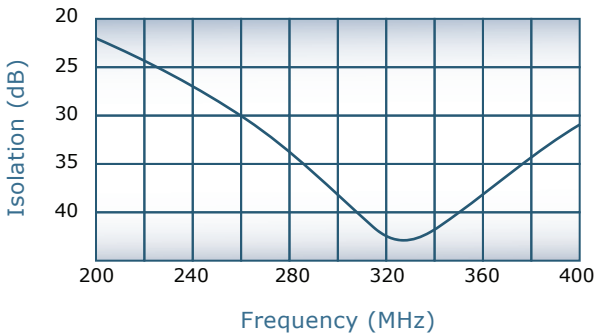
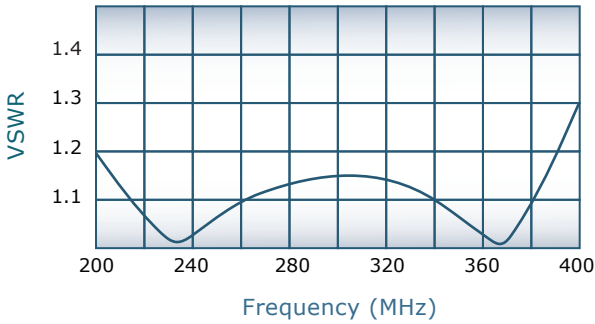
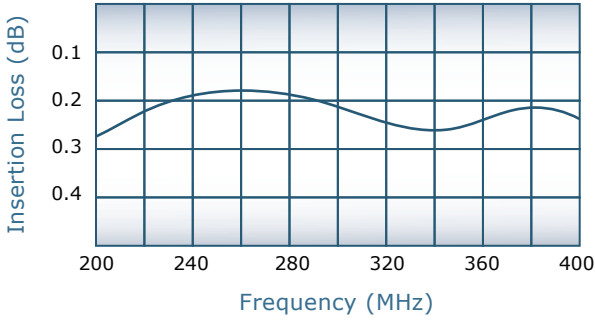
Werlatone[®], Inc.

17 Jon Barrett Road Patterson, New York 12563
T (845) 278 2220 www.werlatone.com
F (845) 278 3440 sales@werlatone.com



180° Hybrid Combiner/Divider
Model H3715

Frequency:	200 - 400 MHz
Power:	200 W CW
Insertion Loss:	0.3 dB Max.
VSWR:	1.40:1 Max.
Isolation:	20 dB Min.
Phase Balance:	180° ± 5° Max.
Amplitude Balance:	0.15 dB Max.



Notes

- All specifications guaranteed
- Test data provided with each unit shipped
- Operating Temperature: -55°C to +75°C
- Weight: 0.75 Pounds

Connector Configurations

Model	J3 (Sum Port)	J1, J2 (0°, 180°)	J4 (Diff Port)
H3715-10	N Female	N Female	N Female
H3715-12	N Female	SMA	SMA
H3715-102	SMA	SMA	SMA

