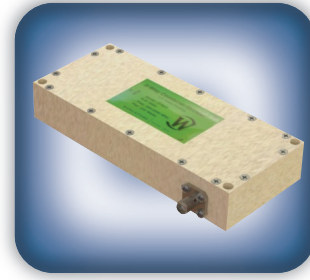




DECADES AHEAD[®]
high power RF devices

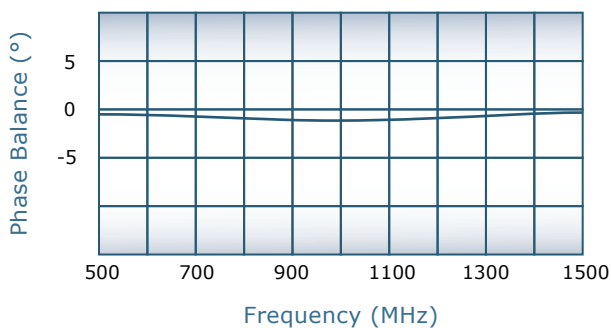
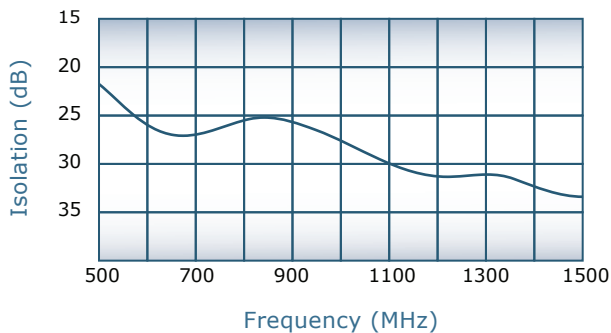
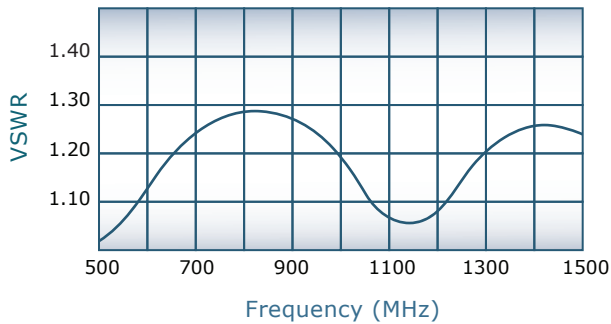
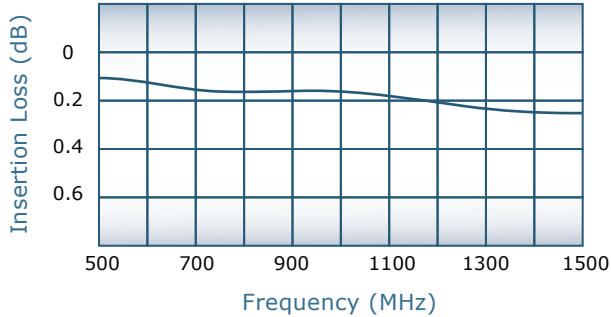
Werlatone[®], Inc.

17 Jon Barrett Road Patterson, New York 12563
T (845) 278 2220 www.werlatone.com
F (845) 278 3440 sales@werlatone.com



2-Way Combiner/Divider
Model D10903

Frequency:	500 - 1500 MHz
Power:	200 W CW 2 kW Peak
Insertion Loss:	0.4 dB Max.
VSWR:	1.35:1 Max.
Isolation:	15 dB Min.
Phase Balance:	± 5° Max.
Amplitude Balance:	± 0.2 dB Max.

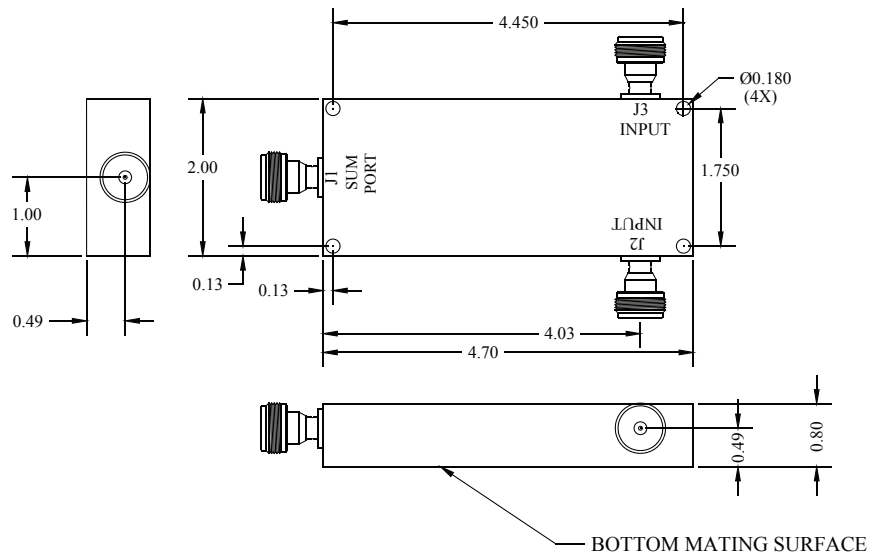


Notes

- All specifications guaranteed
- Test data provided with each unit shipped
- Alternate connector configurations upon request
- Weight: 0.75 Pounds
- Operating Temperature: -55°C to +75°C
- Unit will handle 100 Watt split into 2 antennas
- Unit will tolerate full input failures on the adjacent port
- Unit designed to withstand a full input failure at rated power

Connector Configurations

Model	J1 (Sum Port)	J2,J3 (Input/Output)
D10903-10	N Female	N Female
D10903-12	N Female	SMA
D10903-102	SMA	SMA



Specifications subject to change without notice



Send Us Your Specs for Custom Designs