

## PRODUCT DATA SHEET

D5575

**Werlatone® Mismatch Tolerant®** High Power Broadband RF Combiners and Dividers will operate into High Load VSWR Conditions, for extended periods, without damage. With extensive experience as a supplier to military platforms worldwide **Werlatone®** designs its High Power Broadband Combiners, Power Dividers, and N-Way Combiners for proper operation in the most stringent operating conditions.

### Features:

High Power      Wide Bandwidths      Small Size      High Isolation      Custom Designs Available

### Electrical Specifications:

Frequency:	20 - 500 MHz
Power:	1000 W CW
Insertion Loss:	0.7 dB Max.
VSWR:	1.40:1 Max.
Phase Balance:	± 5° Max.
Amplitude Balance:	0.3 dB Max.
Isolation:	18 dB Min.

### Mechanical Specifications:

Type:	Connectorized
Material:	Aluminum 6061-T6
Surface Finish:	Chem. Film Per MIL-DTL-5541F Type I Class 3 (Yellow Iridite) RoHS Compliant Available
Operating Temperature:	-55°C to +75°C
Storage Temperature:	-60°C to +85°C
Weight:	5 lbs.
Size:	7.0 x 7.5 x 2.25"

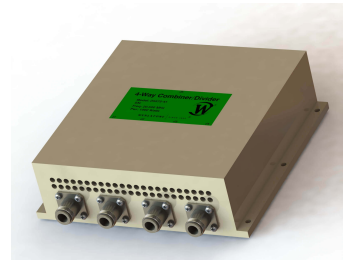
### Connector Configurations:

Model	Sum Port (J5)	Input/Output (J1-J4)
D5575-10	N Female	N Female
D5575-12	N Female	SMA Female
D5575-13	N Female	BNC Female
D5575-20	7/16 Female	N Female
D5575-41	SC Female	N Female

**When specified, Werlatone® High Power Combiners and RF Dividers** will tolerate full input failures on adjacent port(s). This insures that remaining transmitter(s) may continue to operate until the amplifier system can be properly shut down for maintenance. Choose your specific connector configuration from a list of options. Additional connector configurations for our High Power RF Combiners/Dividers, Non-Coherent Combiners, and N-Way Combiners are available upon request.

**Restriction on use, duplication, or disclosure of proprietary information.** This document contains proprietary information which is the sole property of Werlatone, Inc.

Werlatone, Inc. 17 Jon Barrett Road Patterson, NY 12563 T:(845)278-2220 F:(845)278-3440 sales@werlatone.com www.werlatone.com

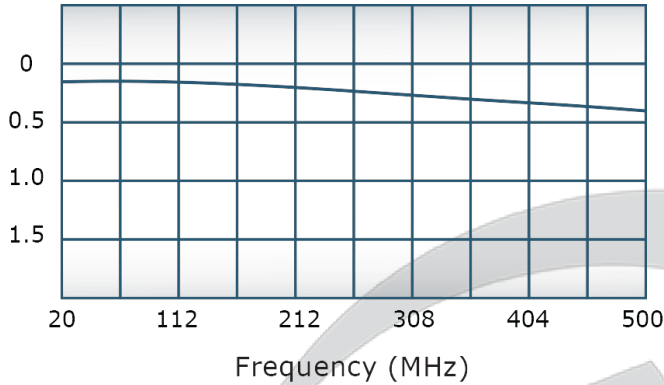


## PRODUCT DATA SHEET

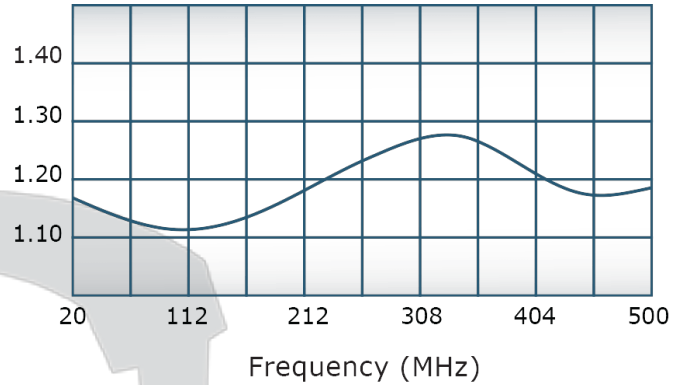
D5575

### Performance Data (Specifications subject to change without notice):

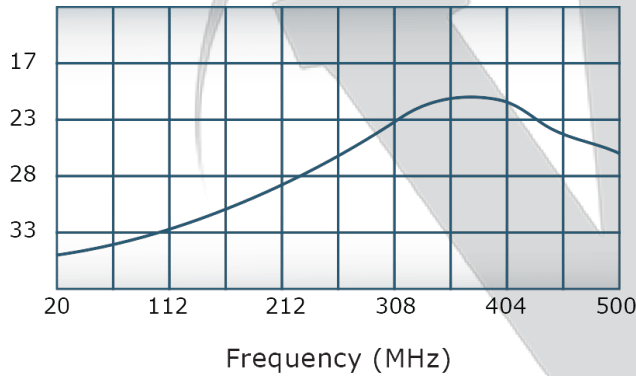
Insertion Loss:



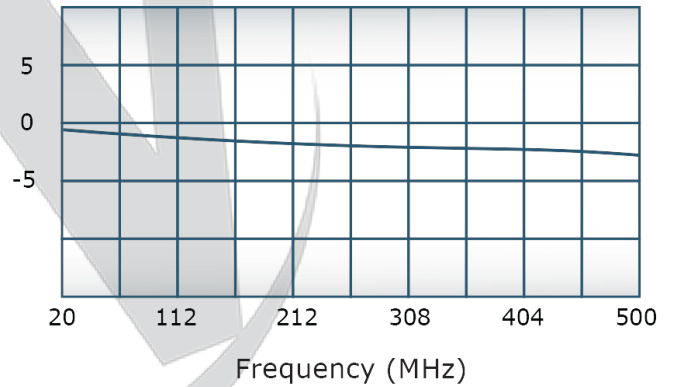
VSWR:



Isolation:



Phase Balance:



Restriction on use, duplication, or disclosure of proprietary information. This document contains proprietary information which is the sole property of

Werlatone, Inc.

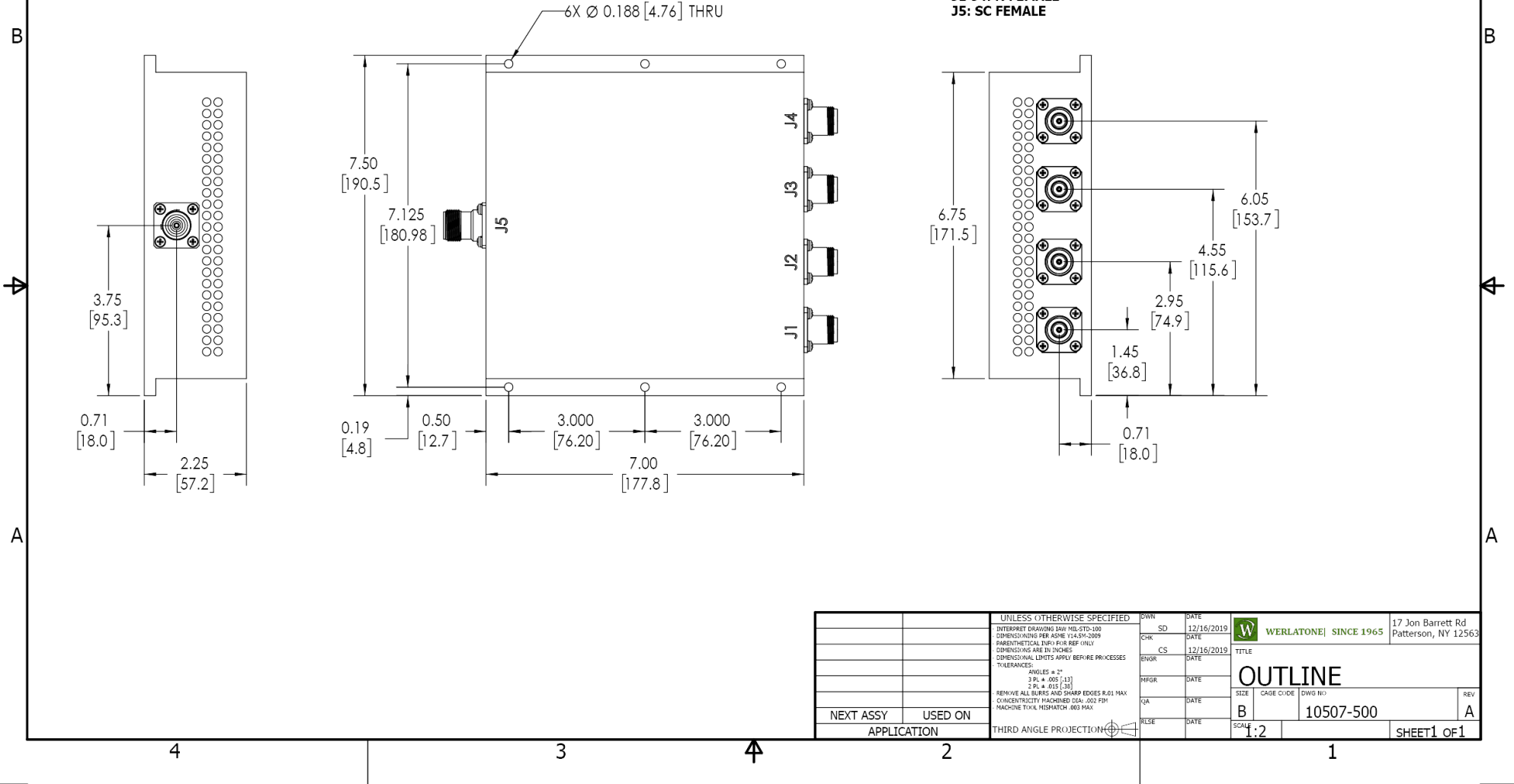
Werlatone, Inc. 17 Jon Barrett Road Patterson, NY 12563 T:(845)278-2220 F:(845)278-3440 sales@werlatone.com www.werlatone.com

**RESTRICTION ON USE, DUPLICATION OR DISCLOSURE OF PROPRIETARY INFORMATION**  
 This document contains proprietary information which is the sole property of Werlatone, Inc.

REVISION HISTORY			
REV.	REVISION RECORD	DATE	APPROVED
A	ECN 9696	12/16/2019	RB

**NOTES: UNLESS OTHERWISE SPECIFIED**

- MATERIAL: ALUMINUM 6061-T6**
- FINISH: CHEM FILM PER MIL-DTL-5541F TYPE II CLASS 3 (YELLOW IRIDITE)**
- CONNECTORS:**  
**J1-J4: N FEMALE**  
**J5: SC FEMALE**



UNLESS OTHERWISE SPECIFIED		OWN	DATE	WERLATONE   SINCE 1965 17 Jon Barrett Rd Patterson, NY 12563			
INTERPRET DRAWING IAW MIL-STD-100	SD	12/16/2019					
DIMENSIONS PER ASME Y14.5M-2009	CHK	DATE		TITLE <b>OUTLINE</b>			
PARENTHEetical INFO FOR REF ONLY	CS	12/16/2019					
DIMENSIONS ARE IN INCHES	ENGR	DATE		SIZE	CAGE CODE	DWG NO.	REV
DIMENSIONAL LIMITS APPLY BEFORE FINISHES	INFR	DATE		B		10507-500	A
TOLERANCES:	QA	DATE		SCALE			
ANGLES = 2°	RLSE	DATE		1:2			
3 PL ± .005 (.13)							
2 PL ± .015 (.38)							
REMOVE ALL BURRS AND SHARP EDGES R.01 MAX							
CONCENTRICITY MACHINED DIA: .002 FIM							
MACHINE TOOL MISMATCH .003 MAX							
NEXT ASSY	USED ON						
APPLICATION	THIRD ANGLE PROJECTION						SHEET 1 OF 1

**Restriction on use, duplication, or disclosure of proprietary information.** This document contains proprietary information which is the sole property of Werlatone, Inc.  
 Werlatone, Inc. 17 Jon Barrett Road Patterson, NY 12563 T:(845)278-2220 F:(845)278-3440 sales@werlatone.com www.werlatone.com