
**PRODUCT DATA SHEET**
**C9930**

**4-Port Dual Directional Coupler** employs two, 3-Port Uni-Directional Couplers, internally connected, in tandem, providing measurement of both forward and reverse power. Ideal for simultaneously monitoring a system's forward and reverse power and for reflectometer measurements. Unlike the Bi-Directional Coupler, the directivity of the Dual Directional Coupler is unaffected by the loads on the coupled ports.

**Features:**

High Power      Wide Bandwidths      Small Size      Flat Coupling      Custom Designs Available

**Electrical Specifications:**

Frequency:      30 - 200 MHz  
 Power:          24,000 W CW  
 Coupling:        60 ± 1.0 dB Max.  
 Insertion Loss: 0.1 dB Max.  
 Flatness:        ± 0.3 dB Max.  
 VSWR (ML):    1.20:1 Max.  
 Directivity:     20 dB Min.

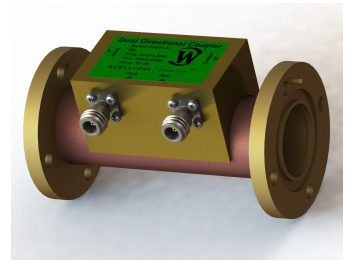
**Mechanical Specifications:**

Type:              Connectorized  
 Material:        Aluminum 6061-T6  
 Surface Finish: Chem. Film Per MIL-DTL-5541F  
                       Type I Class 3 (Yellow Iridite)  
                       RoHS Compliant Available  
 Operating Temperature: -55°C to +75°C  
 Storage Temperature: -60°C to +85°C  
 Humidity:        95% Non-Condensing  
 Size:              6" Line Section

**Connector Configurations:**

Model	Input (J1)	Output (J2)	Fwd (J3)	Rev (J4)
C9930-81	1 5/8" EIA	1 5/8" EIA	N Female	N Female
C9930-83	1 5/8" EIA	1 5/8" EIA	SMA	SMA
C9930-84	1 5/8" EIA	1 5/8" EIA	BNC	BNC

**Werlatone®** Broadband Dual, Uni, and Bi Directional RF Couplers are designed to tolerate the most stringent operating conditions associated with military and EMC testing environments. Many of our RF Directional Couplers, designated Mismatch Tolerant®, will operate continuously, at rated power, into a severe load mismatch condition. Our multi-octave Directional Couplers maintain exceptional coupling flatness, directivity, VSWR, and insertion loss.

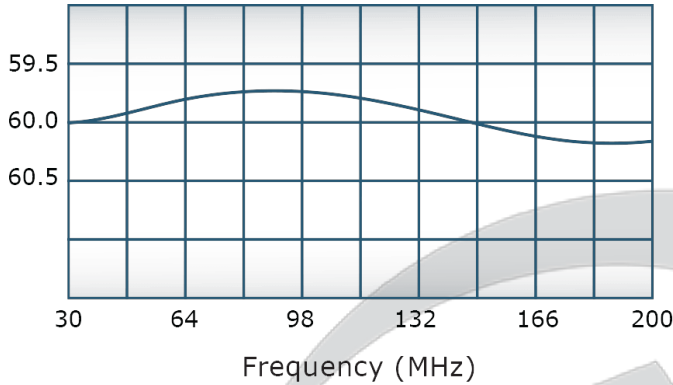


## PRODUCT DATA SHEET

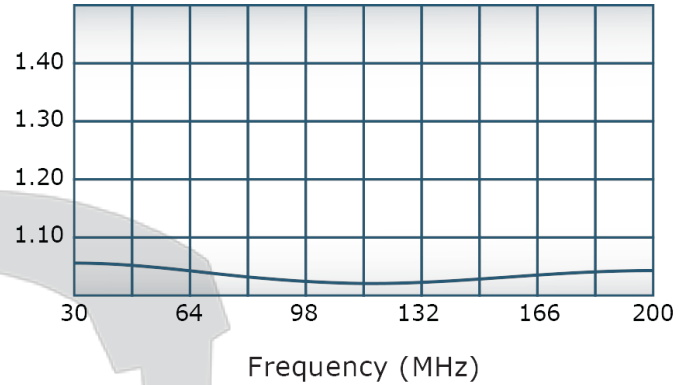
C9930

### Performance Data (Specifications subject to change without notice):

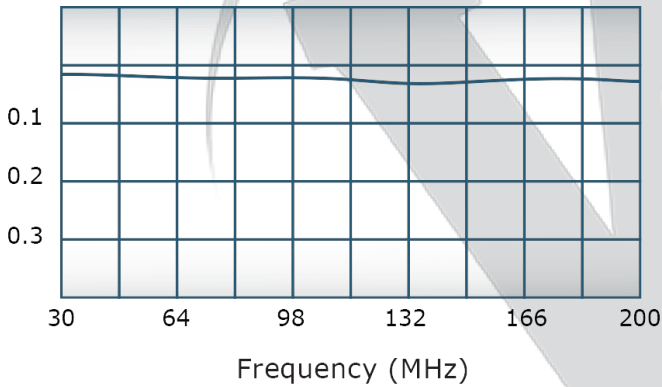
Coupling:



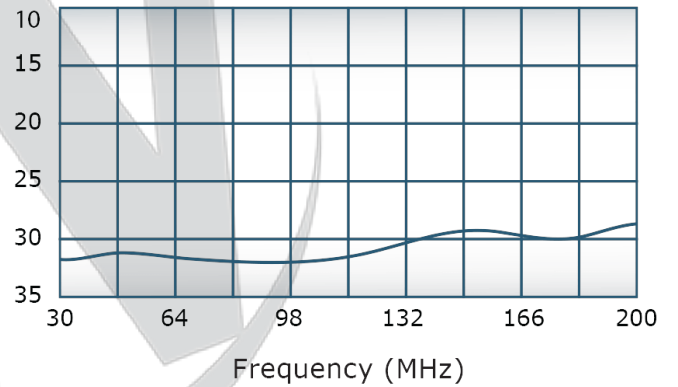
VSWR:



Insertion Loss:



Directivity:



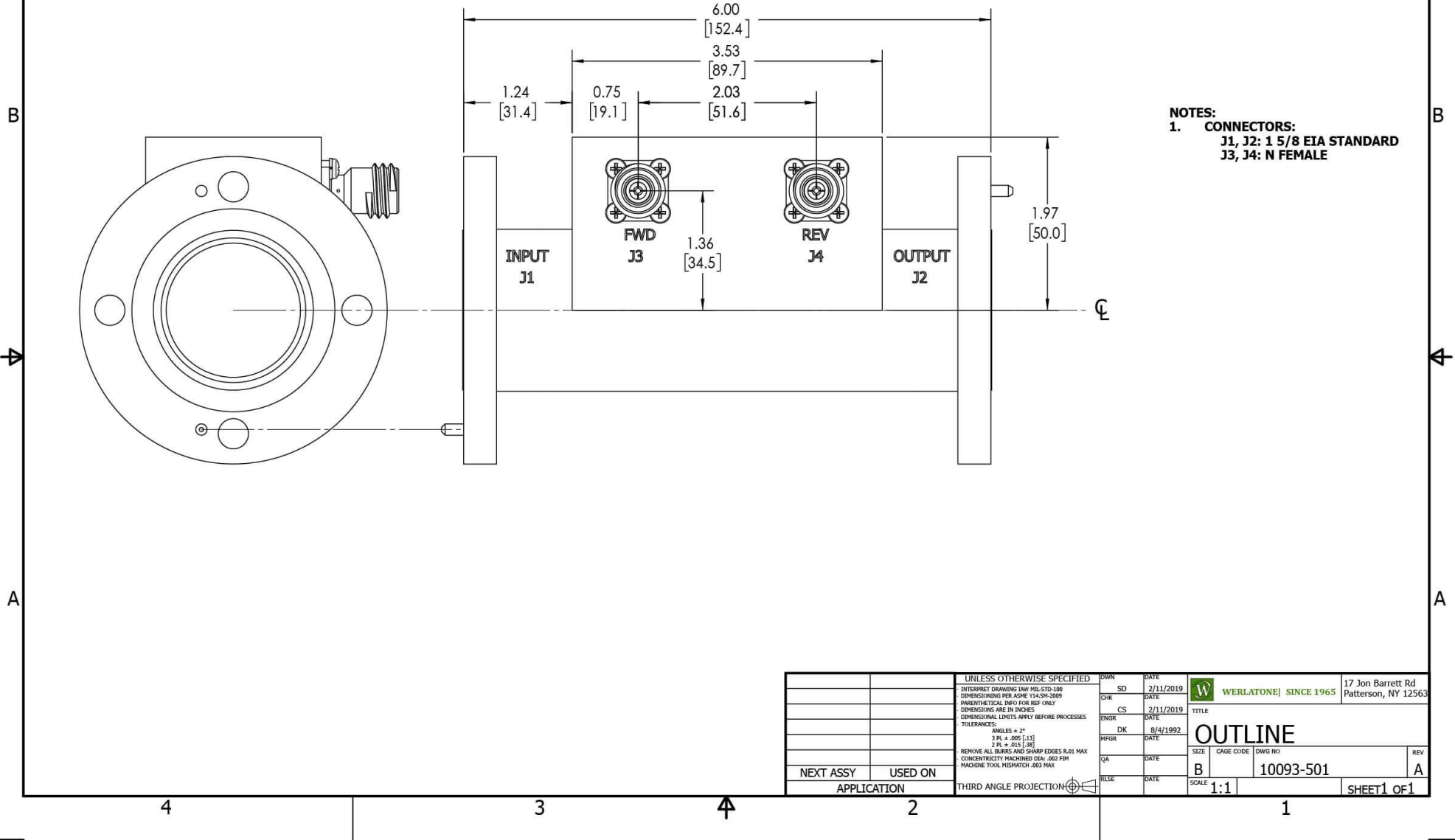
Restriction on use, duplication, or disclosure of proprietary information. This document contains proprietary information which is the sole property of

Werlatone, Inc.

Werlatone, Inc. 17 Jon Barrett Road Patterson, NY 12563 T:(845)278-2220 F:(845)278-3440 sales@werlatone.com www.werlatone.com

**RESTRICTION ON USE, DUPLICATION OR DISCLOSURE OF PROPRIETARY INFORMATION**  
 This document contains proprietary information which is the sole property of Werlatone, Inc.

REVISION HISTORY			
REV.	REVISION RECORD	DATE	APPROVED
A	ECN 9696	11/29/18	RB



UNLESS OTHERWISE SPECIFIED		DWN	DATE	WERLATONE SINCE 1965 <table border="0" style="float: right;"> <tr> <td>17 Jon Barrett Rd</td> </tr> <tr> <td>Patterson, NY 12563</td> </tr> </table>	17 Jon Barrett Rd	Patterson, NY 12563
17 Jon Barrett Rd						
Patterson, NY 12563						
INTERPRET DRAWING IAW MIL-STD-100	SD	2/11/2019				
DIMENSIONS FOR ASME Y14.5M-2009	CHK	DATE				
PARENTHEetical INFO FOR REF ONLY	CS	2/11/2019	TITLE			
DIMENSIONS ARE IN INCHES	ENGR	DATE	<b>OUTLINE</b>			
DIMENSIONAL LINES APPLY BEFORE PROCESSES	DK	8/4/1992	SIZE			
TOLERANCES:	INFR	DATE	CAGE CODE			
ANGLES ± 2°	QA	DATE	DWG NO			
3 PL ± .005 (1.3)	RELSE	DATE	REV			
2 PL ± .015 (1.38)			A			
REMOVE ALL BURRS AND SHARP EDGES R.01 MAX						
CONCENTRICITY MACHINED DIA: .002 FIM						
MACHINE TOOL MISMATCH .003 MAX.						
NEXT ASSY	USED ON		SCALE			
			1:1			
APPLICATION	THIRD ANGLE PROJECTION		10093-501			
			SHEET 1 OF 1			

Restriction on use, duplication, or disclosure of proprietary information. This document contains proprietary information which is the sole property of Werlatone, Inc.  
 Werlatone, Inc. 17 Jon Barrett Road Patterson, NY 12563 T:(845)278-2220 F:(845)278-3440 sales@werlatone.com www.werlatone.com