



PRODUCT DATA SHEET

C9534

3-Port Uni-Directional Coupler: Consists of a main line and a coupled line. One end of the coupled line is internally terminated, while the other end serves as a coupled port. Ideal for sampling and monitoring power in one direction at a given time. It is necessary to physically reverse the orientation of the unit to change from a forward to a reverse power measurement.

Features:

High Power Wide Bandwidths Small Size Flat Coupling Custom Designs Available

Electrical Specifications:

Frequency: 100 - 1000 MHz
Power: 350 W CW
Coupling: 6 ± 1.0 dB Max.
Insertion Loss: 0.4 dB Max.
Flatness: ± 1.0 dB Max.
VSWR (ML): 1.30:1 Max.
Directivity: 17 dB Min.

Mechanical Specifications:

Type: Connectorized
Material: Aluminum 6061-T6
Surface Finish: Chem. Film Per MIL-DTL-5541F
Type I Class 3 (Yellow Iridite)
RoHS Compliant Available
Operating Temperature: -55°C to +75°C
Storage Temperature: -60°C to +85°C
Humidity: 95% Non-Condensing
Size: 6.75 x 3.0 x 1.2"

Port Configurations:

| Model | Input (J1) | Output (J2) | Fwd (J3) |
|-----------|------------|-------------|----------|
| C9534-10 | N Female | N Female | N Female |
| C9534-12 | N Female | N Female | SMA |
| C9534-102 | SMA | SMA | SMA |

Werlatone® Broadband Dual, Uni, and Bi Directional RF Couplers are designed to tolerate the most stringent operating conditions associated with military and EMC testing environments. Many of our RF Directional Couplers, designated Mismatch Tolerant®, will operate continuously, at rated power, into a severe load mismatch condition. Our multi-octave Directional Couplers maintain exceptional coupling flatness, directivity, VSWR, and insertion loss.

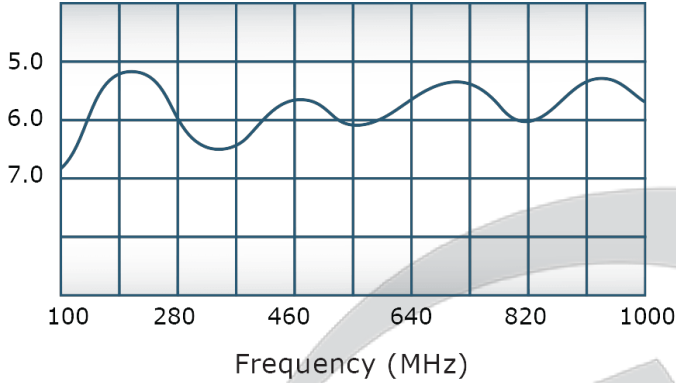
Restriction on use, duplication, or disclosure of proprietary information. This document contains proprietary information which is the sole property of Werlatone, Inc.

Werlatone, Inc. 17 Jon Barrett Road Patterson, NY 12563 T:(845)278-2220 F:(845)278-3440 sales@werlatone.com www.werlatone.com

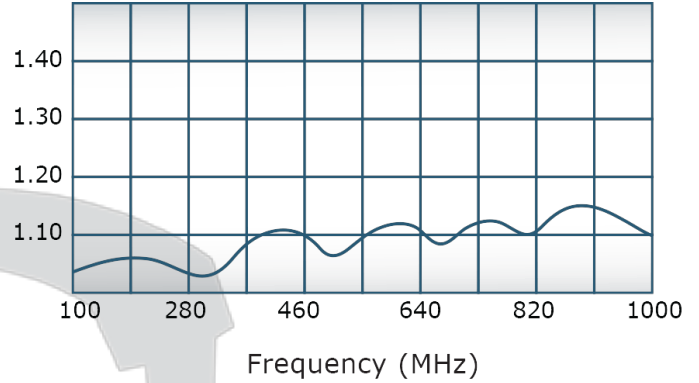


Performance Data (Specifications subject to change without notice):

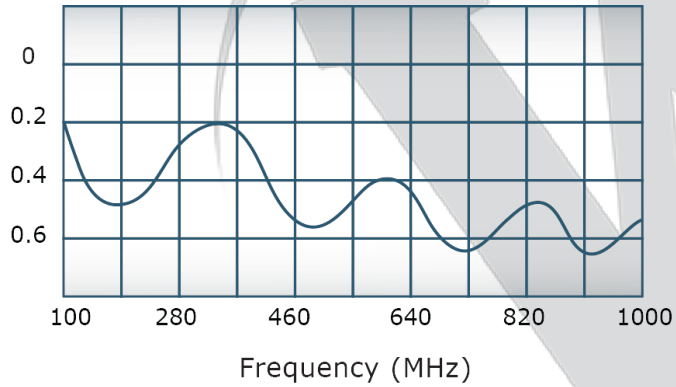
Coupling:



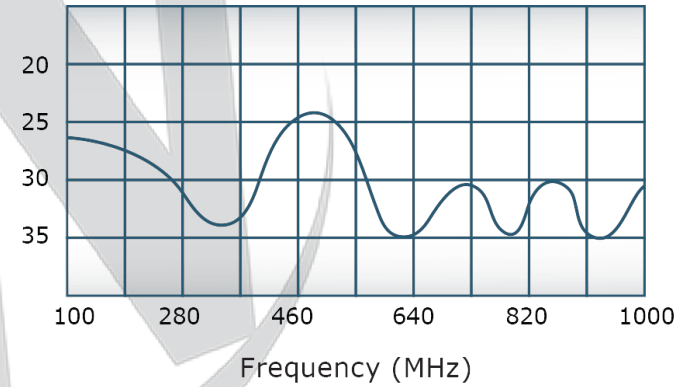
VSWR:



Insertion Loss:

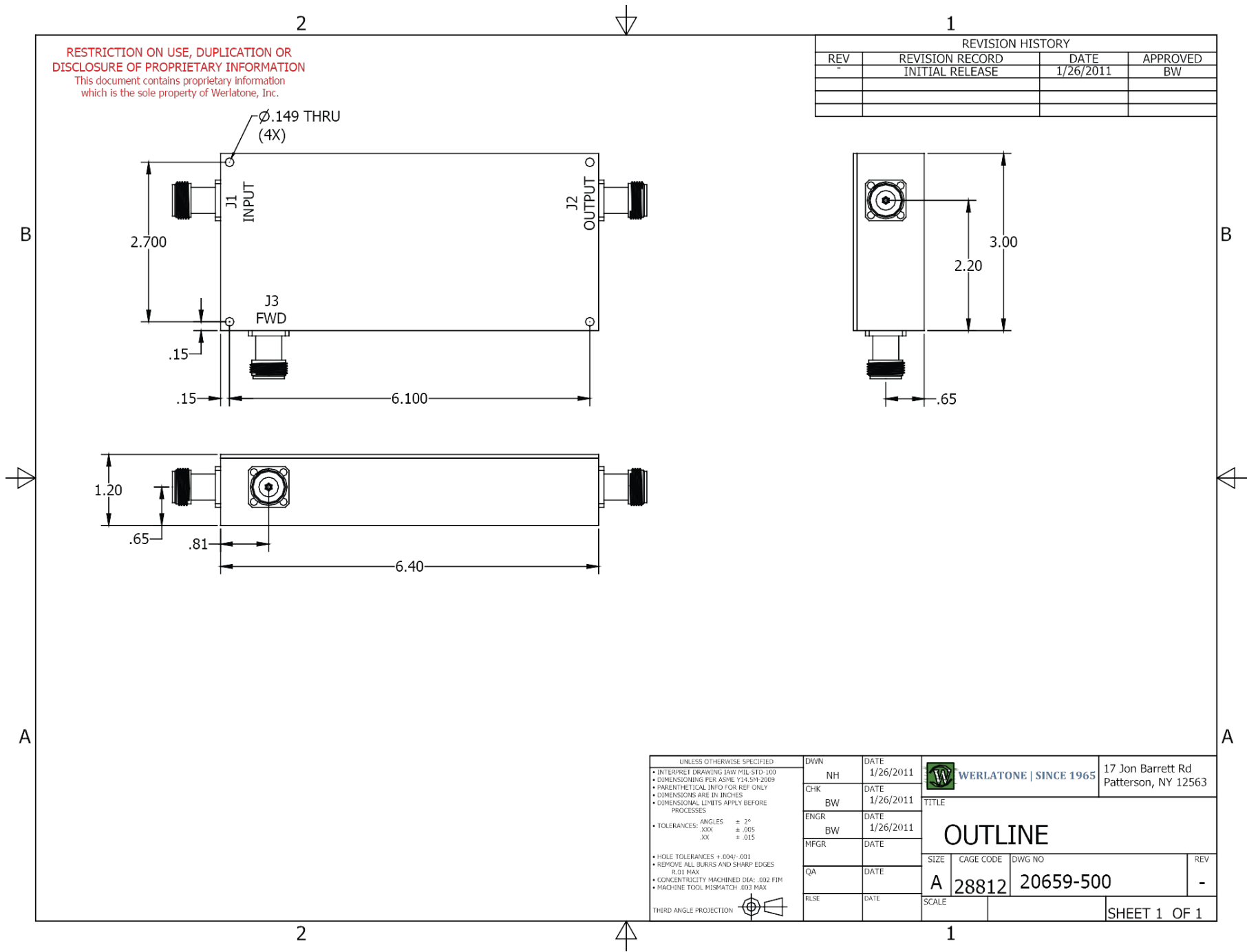


Directivity:



Restriction on use, duplication, or disclosure of proprietary information. This document contains proprietary information which is the sole property of Werlatone, Inc.

Werlatone, Inc. 17 Jon Barrett Road Patterson, NY 12563 T:(845)278-2220 F:(845)278-3440 sales@werlatone.com www.werlatone.com



| | | | | | | | |
|---|--|------|-----------|-------------------------------|--|--------------|-----------|
| UNLESS OTHERWISE SPECIFIED | | DWN | DATE | WERLATONE SINCE 1965 | 17 Jon Barrett Rd Patterson, NY 12563 | | |
| <ul style="list-style-type: none"> • INTERPRET DRAWING IN ACCORDANCE WITH MIL-STD-100 • DIMENSIONING PER ASME Y14.5M-2009 • PARENTHETICAL INFO FOR REF ONLY • DIMENSIONS ARE IN INCHES • DIMENSIONAL LIMITS APPLY BEFORE PROCESSES | | NH | 1/26/2011 | | | | |
| <ul style="list-style-type: none"> • TOLERANCES: ANGLES = 2° XXX = .005 XX = .015 | | CHK | DATE | TITLE | | | |
| <ul style="list-style-type: none"> • HOLE TOLERANCES + .004/- .001 • REMOVE ALL BURRS AND SHARP EDGES • R.01 MAX • CONCENTRICITY MACHINED DIA: .002 FIM • MACHINE TOOL MISMATCH .003 MAX | | BW | 1/26/2011 | OUTLINE | | | |
| THIRD ANGLE PROJECTION | | ENGR | DATE | | | SIZE | CAGE CODE |
| | | MFG | DATE | A | 28812 | 20659-500 | - |
| | | QA | DATE | SCALE | | SHEET 1 OF 1 | |
| | | RLSE | DATE | | | | |

Restriction on use, duplication, or disclosure of proprietary information. This document contains proprietary information which is the sole property of Werlatone, Inc.
 Werlatone, Inc. 17 Jon Barrett Road Patterson, NY 12563 T:(845)278-2220 F:(845)278-3440 sales@werlatone.com www.werlatone.com