

PRODUCT DATA SHEET

C7800

3-Port Uni-Directional Coupler: Consists of a main line and a coupled line. One end of the coupled line is internally terminated, while the other end serves as a coupled port. Ideal for sampling and monitoring power in one direction at a given time. It is necessary to physically reverse the orientation of the unit to change from a forward to a reverse power measurement.

Features:

High Power Wide Bandwidths Small Size Flat Coupling Custom Designs Available

Electrical Specifications:

| | |
|-----------------|------------------|
| Frequency: | 30 - 2800 MHz |
| Power: | 20 W CW |
| Coupling: | 20 ± 1.0 dB Max. |
| Insertion Loss: | 2.25 dB Max. |
| Flatness: | ± 1.0 dB Max. |
| VSWR (ML): | 1.35:1 Max. |
| Directivity: | 20 dB Min. |

Mechanical Specifications:

| | |
|------------------------|---|
| Type: | Connectorized |
| Material: | Aluminum 6061-T6 |
| Surface Finish: | Chem. Film Per MIL-DTL-5541F Type I Class 3 (Yellow Iridite) RoHS Compliant Available |
| Operating Temperature: | -55°C to +75°C |
| Storage Temperature: | -60°C to +85°C |
| Humidity: | 95% Non-Condensing |
| Size: | 6.0 x 1.5 x 1.1" |

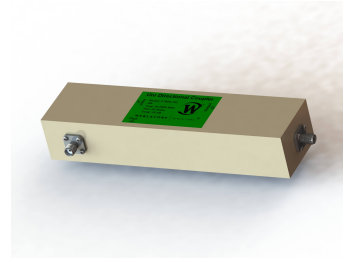
Connector Configurations:

| Model | Input (J1) | Output (J2) | Fwd (J3) |
|-----------|------------|-------------|----------|
| C7800-10 | N Female | N Female | N Female |
| C7800-12 | N Female | N Female | SMA |
| C7800-102 | SMA | SMA | SMA |

Werlatone® Broadband Dual, Uni, and Bi Directional RF Couplers are designed to tolerate the most stringent operating conditions associated with military and EMC testing environments. Many of our RF Directional Couplers, designated Mismatch Tolerant®, will operate continuously, at rated power, into a severe load mismatch condition. Our multi-octave Directional Couplers maintain exceptional coupling flatness, directivity, VSWR, and insertion loss.

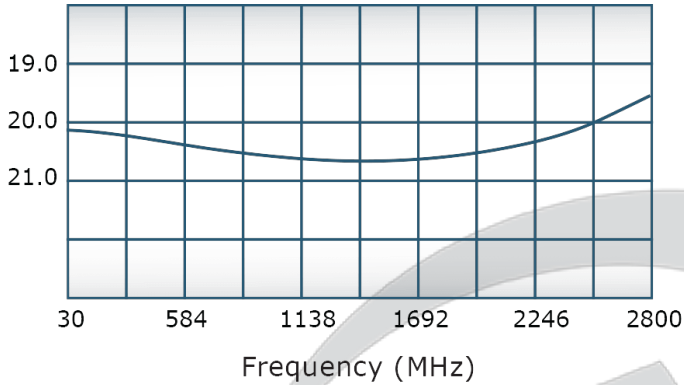
Restriction on use, duplication, or disclosure of proprietary information. This document contains proprietary information which is the sole property of Werlatone, Inc.

Werlatone, Inc. 17 Jon Barrett Road Patterson, NY 12563 T:(845)278-2220 F:(845)278-3440 sales@werlatone.com www.werlatone.com

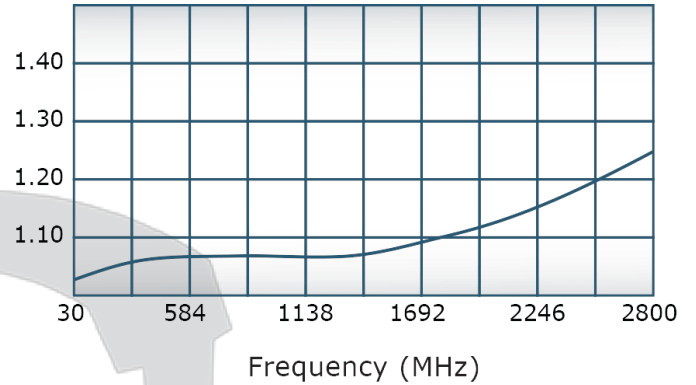


Performance Data (Specifications subject to change without notice):

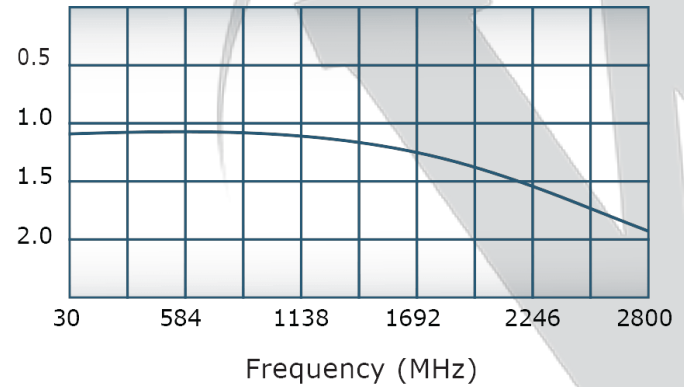
Coupling:



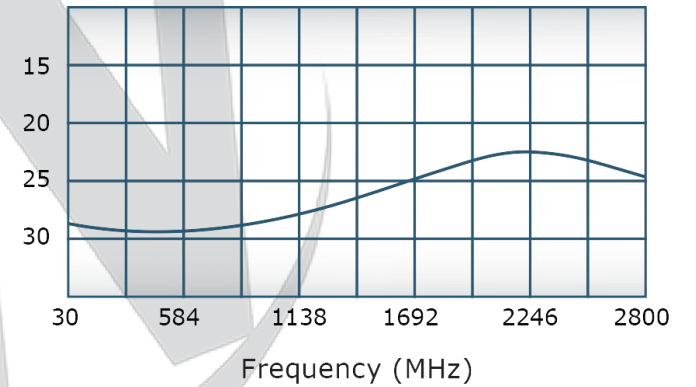
VSWR:



Insertion Loss:



Directivity:



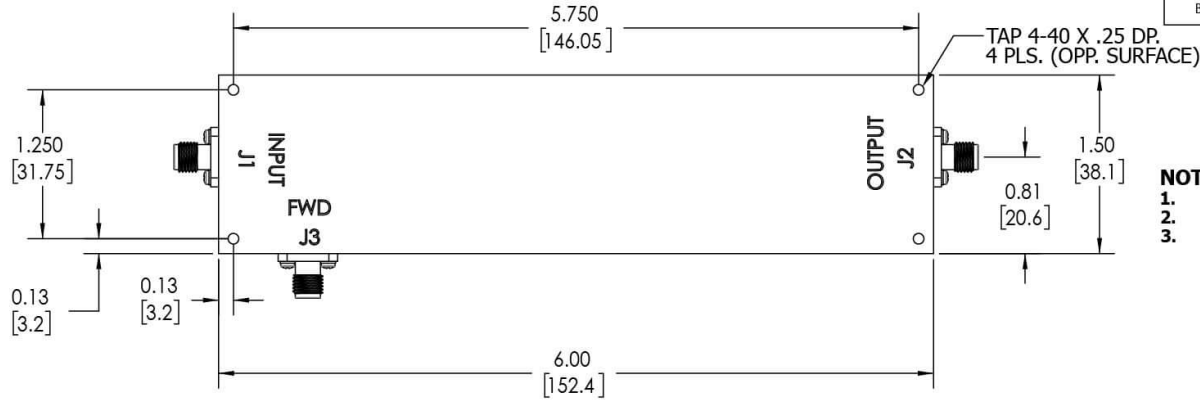
Restriction on use, duplication, or disclosure of proprietary information. This document contains proprietary information which is the sole property of

Werlatone, Inc.

Werlatone, Inc. 17 Jon Barrett Road Patterson, NY 12563 T:(845)278-2220 F:(845)278-3440 sales@werlatone.com www.werlatone.com

RESTRICTION ON USE, DUPLICATION OR DISCLOSURE OF PROPRIETARY INFORMATION
 This document contains proprietary information which is the sole property of Werlatone, Inc.

| REVISION HISTORY | | | |
|------------------|-----------------|-----------|----------|
| REV. | REVISION RECORD | DATE | APPROVED |
| A | ECN 4310 | 8/27/2007 | NH |
| B | ECN 9696 | 6/18/2019 | RB |



- NOTES: UNLESS OTHERWISE SPECIFIED**
- MATERIAL: ALUMINUM 6061-T6**
 - FINISH: CHEM FILM PER MIL-DTL-5541F TYPE I CLASS 3 (YELLOW IRIDITE)**
 - CONNECTORS: J1-J3: SMA FEMALE**

| | | | |
|---|------|-----------|--|
| UNLESS OTHERWISE SPECIFIED | DWN | DATE | 17 Jon Barrett Rd Patterson, NY 12563 |
| INTERPRET DRAWING IAW MIL-STD-100 | SD | 6/18/2019 | W WERLATONE SINCE 1965 |
| DIMENSIONS PER ASME Y14.5M-2009 | CHK | DATE | |
| PARENTHEetical INFO FOR REF ONLY | CS | 6/18/2019 | TITLE |
| DIMENSIONS ARE IN INCHES | ENGR | DATE | OUTLINE |
| DIMENSIONAL LIMITS APPLY BEFORE PROCESSES | INFR | DATE | SIZE |
| TOLERANCES: | QA | DATE | CAGE CODE |
| ANGLES ± 2° | RLSE | DATE | DWG NO |
| 3 PL ± .005 [13] | | | B |
| 2 PL ± .015 [38] | | | 10933-500 |
| REMOVE ALL BURRS AND SHARP EDGES R.01 MAX | | | SCALE |
| CONCENTRICITY MACHINED DIA: .002 FIM | | | 1:1 |
| MACHINE TOOL MISMATCH .003 MAX. | | | SHEET 1 OF 1 |

Restriction on use, duplication, or disclosure of proprietary information. This document contains proprietary information which is the sole property of Werlatone, Inc.
 Werlatone, Inc. 17 Jon Barrett Road Patterson, NY 12563 T:(845)278-2220 F:(845)278-3440 sales@werlatone.com www.werlatone.com