
PRODUCT DATA SHEET
C7050

3-Port Uni-Directional Coupler: Consists of a main line and a coupled line. One end of the coupled line is internally terminated, while the other end serves as a coupled port. Ideal for sampling and monitoring power in one direction at a given time. It is necessary to physically reverse the orientation of the unit to change from a forward to a reverse power measurement.

Features:

High Power Wide Bandwidths Small Size Flat Coupling Custom Designs Available

Electrical Specifications:

Frequency: 20 - 180 MHz
 Power: 100 W CW
 Coupling: 10 ± 1.0 dB Max.
 Insertion Loss: 0.5 dB Max.
 Flatness: ± 0.25 dB Max.
 VSWR (ML): 1.30:1 Max.
 Directivity: 20 dB Min.

Mechanical Specifications:

Type: Connectorized
 Material: Aluminum 6061-T6
 Surface Finish: Chem. Film Per MIL-DTL-5541F
 Type I Class 3 (Yellow Iridite)
 RoHS Compliant Available
 Operating Temperature: -55°C to +75°C
 Storage Temperature: -60°C to +85°C
 Humidity: 95% Non-Condensing
 Size: 2.0 x 2.0 x 1.87"

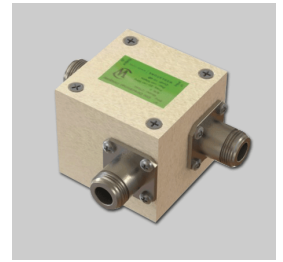
Connector Configurations:

| Model | Input (J1) | Output (J2) | Fwd (J3) |
|-----------|------------|-------------|----------|
| C7050-10 | N Female | N Female | N Female |
| C7050-12 | N Female | N Female | SMA |
| C7050-13 | N Female | N Female | BNC |
| C7050-102 | SMA | SMA | SMA |

Werlatone® Broadband Dual, Uni, and Bi Directional RF Couplers are designed to tolerate the most stringent operating conditions associated with military and EMC testing environments. Many of our RF Directional Couplers, designated Mismatch Tolerant®, will operate continuously, at rated power, into a severe load mismatch condition. Our multi-octave Directional Couplers maintain exceptional coupling flatness, directivity, VSWR, and insertion loss.

Restriction on use, duplication, or disclosure of proprietary information. This document contains proprietary information which is the sole property of Werlatone, Inc.

Werlatone, Inc. 17 Jon Barrett Road Patterson, NY 12563 T:(845)278-2220 F:(845)278-3440 sales@werlatone.com www.werlatone.com

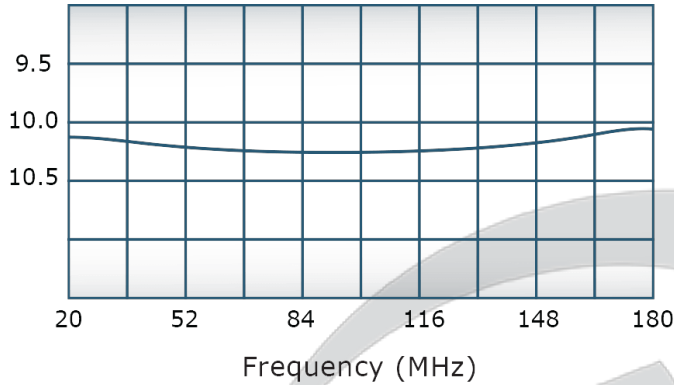


PRODUCT DATA SHEET

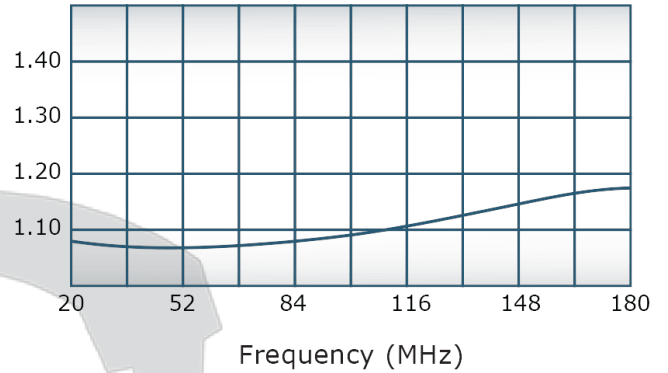
C7050

Performance Data (Specifications subject to change without notice):

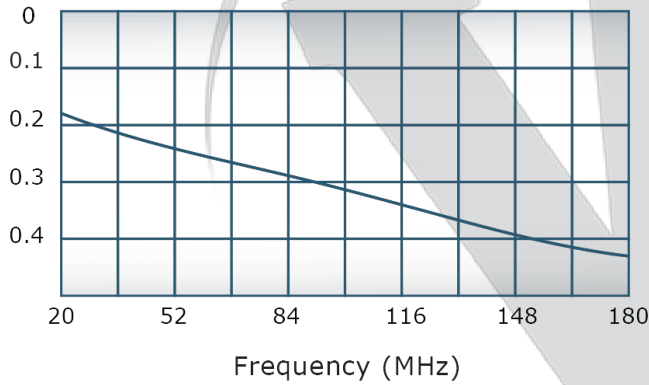
Coupling:



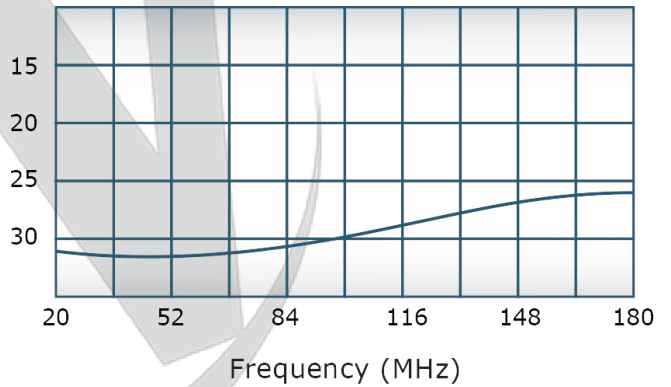
VSWR:



Insertion Loss:



Directivity:

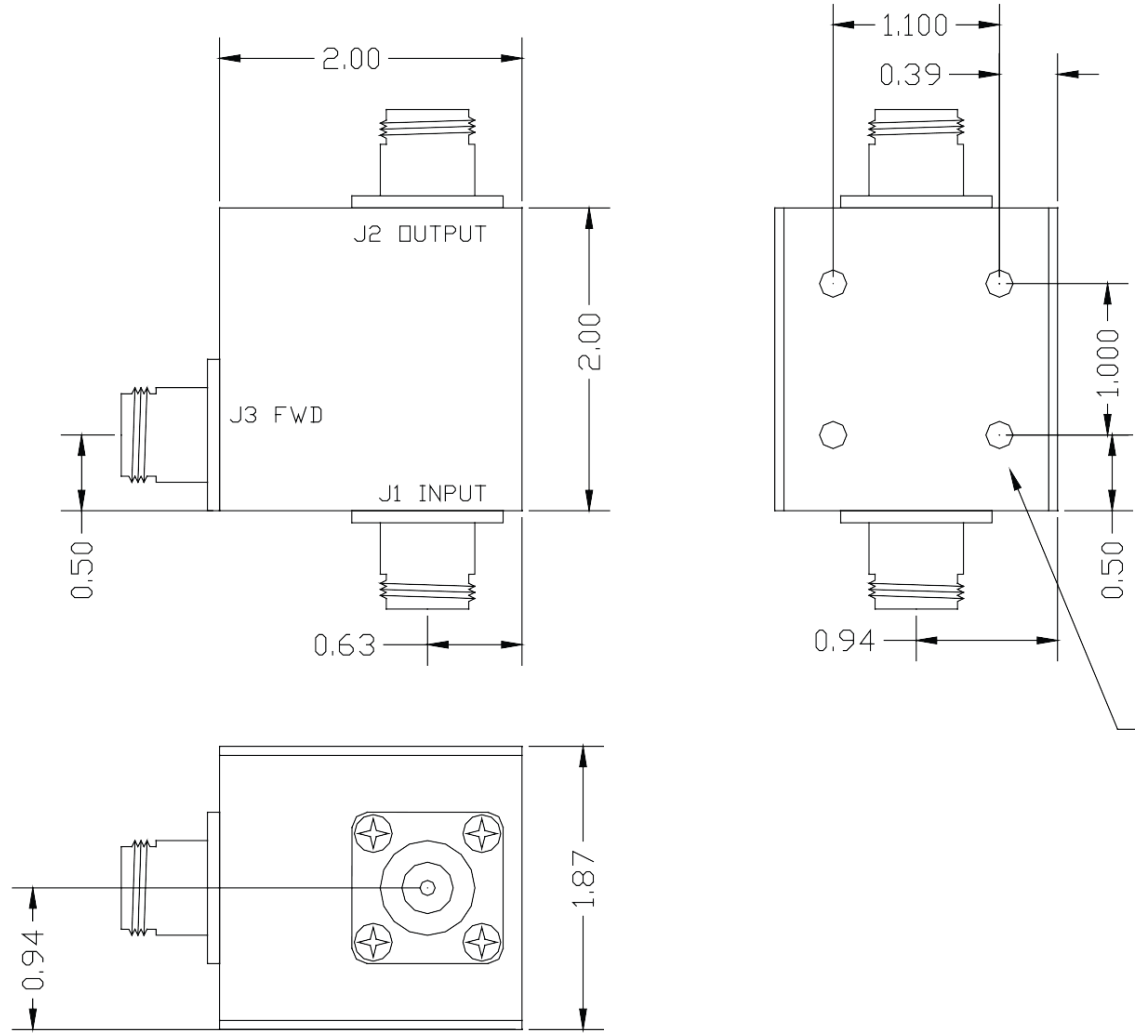


Restriction on use, duplication, or disclosure of proprietary information. This document contains proprietary information which is the sole property of

Werlatone, Inc.

Werlatone, Inc. 17 Jon Barrett Road Patterson, NY 12563 T:(845)278-2220 F:(845)278-3440 sales@werlatone.com www.werlatone.com

| DATE | SYM | REVISION RECORD | AUTH | DR | CK |
|--------|-------|-----------------|------|----|----|
| 7/6/07 | REV A | ECN 4270 | MJ | | |
| | | | | | |
| | | | | | |



MOUNTING: 6-32X0.25
 THREADED INSERT
 *UNIT MUST BE HEATSUNK
 FOR PROPER OPERATION*

THIS DRAWING CONTAINS INFORMATION
 PROPRIETARY TO WERLATONE INC. AND
 MAY NOT BE USED OR COPIED WITHOUT
 THE WRITTEN CONSENT OF WERLATONE INC.

| | | | |
|-----------------------------|-----------------|-----------------------------|---------------------------|
| TOLERANCE | WERLATONE INC. | | |
| XX +/- .015 XXX +/- .005 | USED ON: C7050 | SCALE | DRAWN BY: MJ APPVD BY: |
| | DATE 2/14/03 | DRAWING NUMBER 10893-500 | |

Restriction on use, duplication, or disclosure of proprietary information. This document contains proprietary information which is the sole property of Werlatone, Inc.
 Werlatone, Inc. 17 Jon Barrett Road Patterson, NY 12563 T:(845)278-2220 F:(845)278-3440 sales@werlatone.com www.werlatone.com