

## PRODUCT DATA SHEET

C6461

**4-Port Dual Directional Coupler** employs two, 3-Port Uni-Directional Couplers, internally connected, in tandem, providing measurement of both forward and reverse power. Ideal for simultaneously monitoring a system's forward and reverse power and for reflectometer measurements. Unlike the Bi-Directional Coupler, the directivity of the Dual Directional Coupler is unaffected by the loads on the coupled ports.

### Features:

High Power      Wide Bandwidths      Small Size      Flat Coupling      Custom Designs Available

### Electrical Specifications:

Frequency:      400 - 1000 MHz  
 Power:          1500 W CW  
 Coupling:        50 ± 1.0 dB Max.  
 Flatness:        ± 0.3 dB Max.  
 Insertion Loss: 0.1 dB Max.  
 VSWR (ML):    1.10:1 Max.  
 Directivity:     23 dB Min.

### Mechanical Specifications:

Type:            Connectorized  
 Material:        Aluminum 6061-T6  
 Surface Finish: Chem. Film Per MIL-DTL-5541F  
                       Type I Class 3 (Yellow Iridite)  
                       RoHS Compliant Available  
 Operating Temperature: -55°C to +75°C  
 Storage Temperature: -60°C to +85°C  
 Humidity:        95% Non-Condensing  
 Size:             3.0 x 3.0 x 1.59"

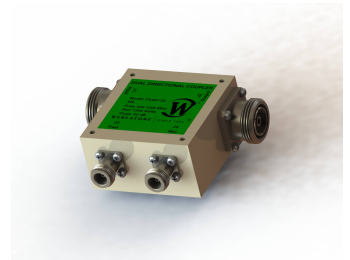
### Connector Configurations:

Model	Input (J1)	Output (J2)	Fwd (J3)	Rev (J4)
C6461-10*	N Female	N Female	N Female	N Female
C6461-12*	N Female	N Female	SMA	SMA
C6461-20	7/16 Female	7/16 Female	N Female	N Female
C6461-22	7/16 Female	7/16 Female	SMA	SMA
C6461-23	7/16 Female	7/16 Female	BNC	BNC
C6461-41*	SC Female	SC Female	N Female	N Female
C6461-43*	SC Female	SC Female	SMA	SMA
C6461-627	7/16 Female	7/16 Female	N Female	N Female
C6461-727	7/16 Male	7/16 Female	N Female	N Female
C6461-728	7/16 Male	7/16 Female	SMA	SMA
C6461-12STS*	Stainless Steel N Female	Stainless Steel N Female	Stainless Steel SMA	Stainless Steel SMA

\*Starred options are 3.0 x 3.0 x 1.09"

**Restriction on use, duplication, or disclosure of proprietary information.** This document contains proprietary information which is the sole property of Werlatone, Inc.

Werlatone, Inc. 17 Jon Barrett Road Patterson, NY 12563 T:(845)278-2220 F:(845)278-3440 sales@werlatone.com www.werlatone.com

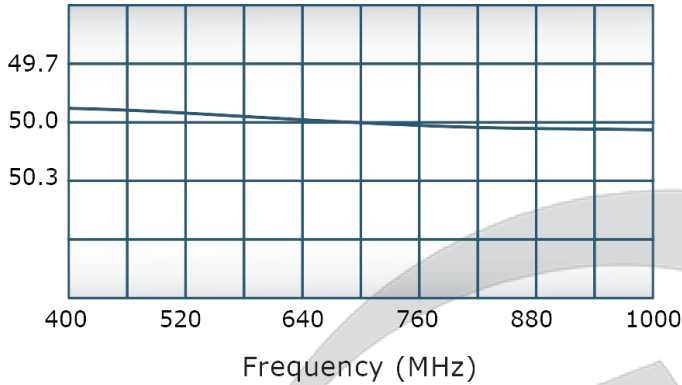


## PRODUCT DATA SHEET

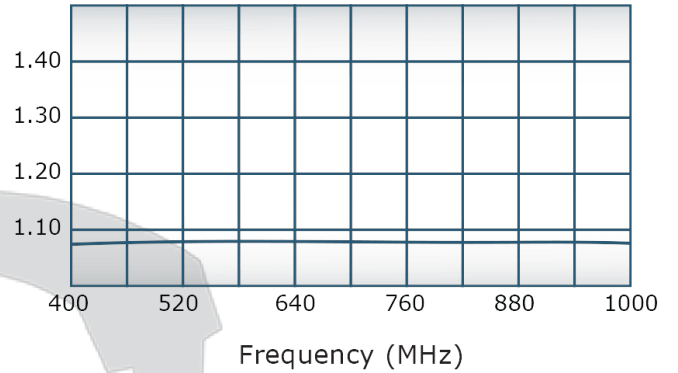
C6461

### Performance Data (Specifications subject to change without notice):

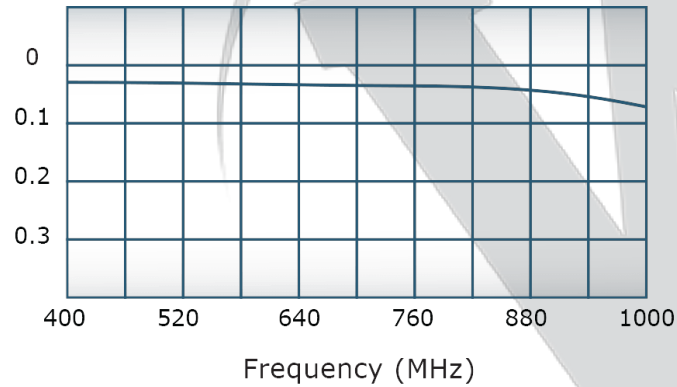
Coupling:



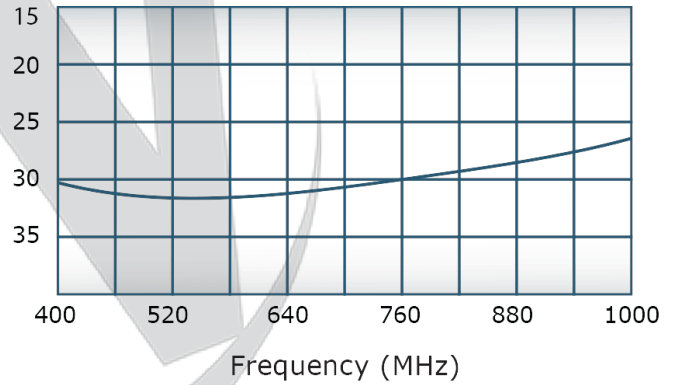
VSWR:



Insertion Loss:



Directivity:



Restriction on use, duplication, or disclosure of proprietary information. This document contains proprietary information which is the sole property of

Werlatone, Inc.

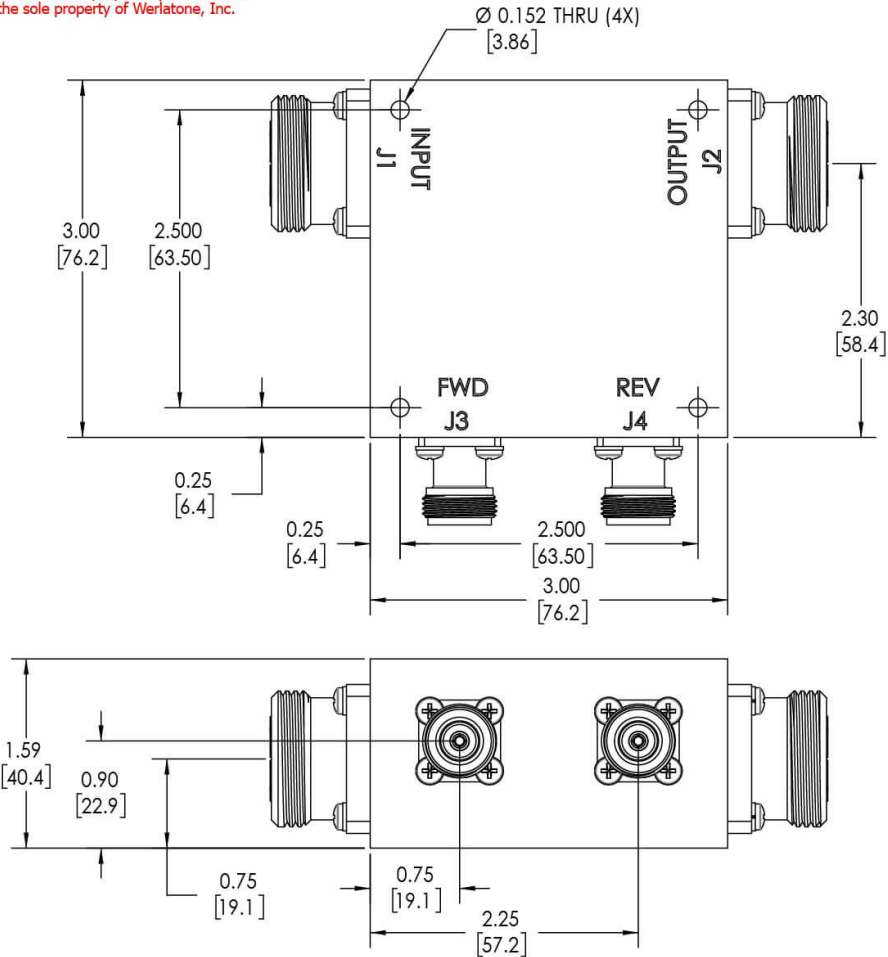
Werlatone, Inc. 17 Jon Barrett Road Patterson, NY 12563 T:(845)278-2220 F:(845)278-3440 sales@werlatone.com www.werlatone.com

**RESTRICTION ON USE, DUPLICATION OR DISCLOSURE OF PROPRIETARY INFORMATION**  
 This document contains proprietary information which is the sole property of Werlatone, Inc.

REVISION HISTORY			
REV.	REVISION RECORD	DATE	APPROVED
A	ECN 9696	5/13/2019	RB

**NOTES: UNLESS OTHERWISE SPECIFIED**

- MATERIAL: ALUMINUM 6061-T6**
- FINISH: CHEM FILM PER MIL-DTL-5541F CLASS I TYPE 3 (YELLOW IRIDITE)**
- CONNECTORS:  
 J1, J2: 7/16 FEMALE  
 J3, J4: N FEMALE**



UNLESS OTHERWISE SPECIFIED		OWN	DATE	17 Jon Barrett Rd Patterson, NY 12563
INTERPRET DRAWING IN ACCORDANCE WITH MIL-STD-100		SD	5/13/2019	
DIMENSIONS PER ASME Y14.5M-2009		CHK	DATE	WERLATONE SINCE 1965
PARENTHESES INFO FOR REF ONLY		CS	5/13/2019	
DIMENSIONS ARE IN INCHES		ENGR	DATE	TITLE <b>OUTLINE</b>
DIMENSIONAL LIMITS APPLY BEFORE PROCESSES		INFR	DATE	
TOLERANCES:		QA	DATE	SIZE CAGE CODE DWG NO B 10443-501
ANGLES ± 2°		RLSE	DATE	
3 PL ± .005 [13]				SCALE 1:1 SHEET 1 OF 1
2 PL ± .015 [38]				
REMOVE ALL BURRS AND SHARP EDGES R.01 MAX				
CONCENTRICITY MACHINED DIA: .002 FIM				
MACHINE TOOL MISMATCH .003 MAX				
NEXT ASSY	USED ON	APPLICATION		
		THIRD ANGLE PROJECTION		

Restriction on use, duplication, or disclosure of proprietary information. This document contains proprietary information which is the sole property of Werlatone, Inc.  
 Werlatone, Inc. 17 Jon Barrett Road Patterson, NY 12563 T:(845)278-2220 F:(845)278-3440 sales@werlatone.com www.werlatone.com