
PRODUCT DATA SHEET
C5954

4-Port Dual Directional Coupler employs two, 3-Port Uni-Directional Couplers, internally connected, in tandem, providing measurement of both forward and reverse power. Ideal for simultaneously monitoring a system's forward and reverse power and for reflectometer measurements. Unlike the Bi-Directional Coupler, the directivity of the Dual Directional Coupler is unaffected by the loads on the coupled ports.

Features:

High Power Wide Bandwidths Small Size Flat Coupling Custom Designs Available

Electrical Specifications:

Frequency: 10 - 200 MHz
 Power: 10,000 W CW
 Coupling: 60 ± 1.0 dB Max.
 Insertion Loss: 0.1 dB Max.
 Flatness: ± 0.5 dB Max.
 VSWR (ML): 1.10:1 Max.
 Directivity: 25 dB Min.

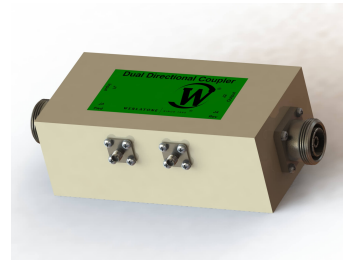
Mechanical Specifications:

Type: Connectorized
 Material: Aluminum 6061-T6
 Surface Finish: Chem. Film Per MIL-DTL-5541F Type I
 Class 3 (Yellow Iridite) RoHS Compliant
 Available
 Operating Temperature: -55°C to +75°C
 Storage Temperature: -60°C to +85°C
 Humidity: 95% Non-Condensing
 Size: 6.0 x 3.0 x 2.24"

Connector Configurations:

Model	Input (J1)	Output (J2)	Fwd (J3)	Rev (J4)
C5954-20*	7/16 Female	7/16 Female	N Female	N Female
C5954-23*	7/16 Female	7/16 Female	BNC	BNC
C5954-30	LC Female	LC Female	N Female	N Female
C5954-32	LC Female	LC Female	SMA	SMA
C5954-33	LC Female	LC Female	BNC	BNC
C5954-61**	HN Female	HN Female	N Female	N Female
C5954-63**	HN Female	HN Female	SMA	SMA
C5954-64**	HN Female	HN Female	BNC	BNC
C5954-501	SQS Female	SQS Female	N Female	N Female
C5954-503	SQS Female	SQS Female	BNC	BNC
C5954-QC-0	QC Block	QC Block	N Female	N Female

* Power Rating is decreased to 5,000 W CW with 7/16 Mainline Connectors. **Unit dimensions are 6.0 x 3.0 x 2.25"

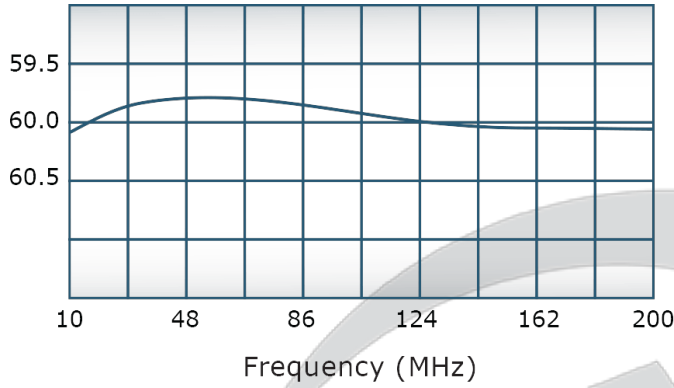


PRODUCT DATA SHEET

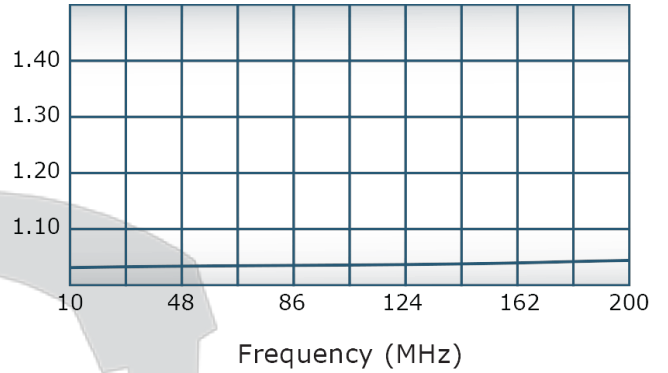
C5954

Performance Data (Specifications subject to change without notice):

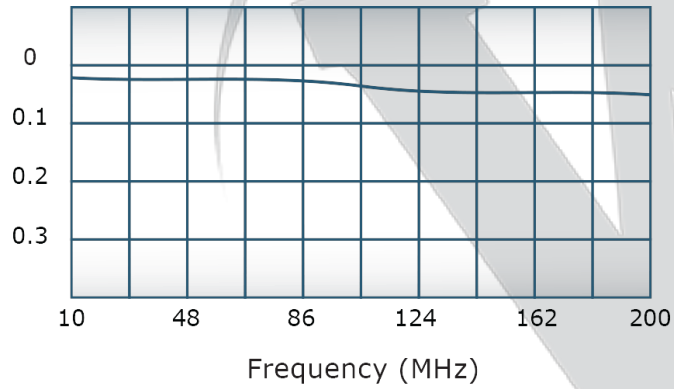
Coupling:



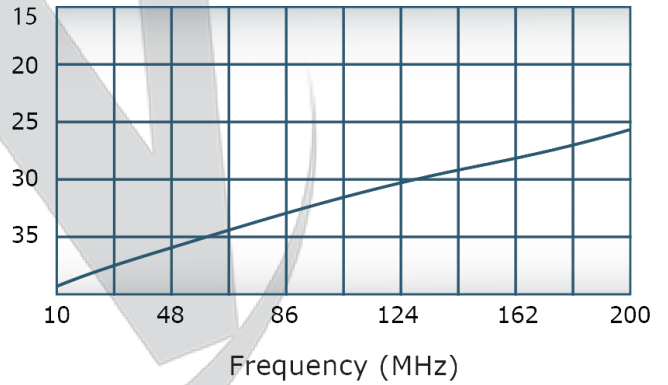
VSWR:



Insertion Loss:



Directivity:



Restriction on use, duplication, or disclosure of proprietary information. This document contains proprietary information which is the sole property of

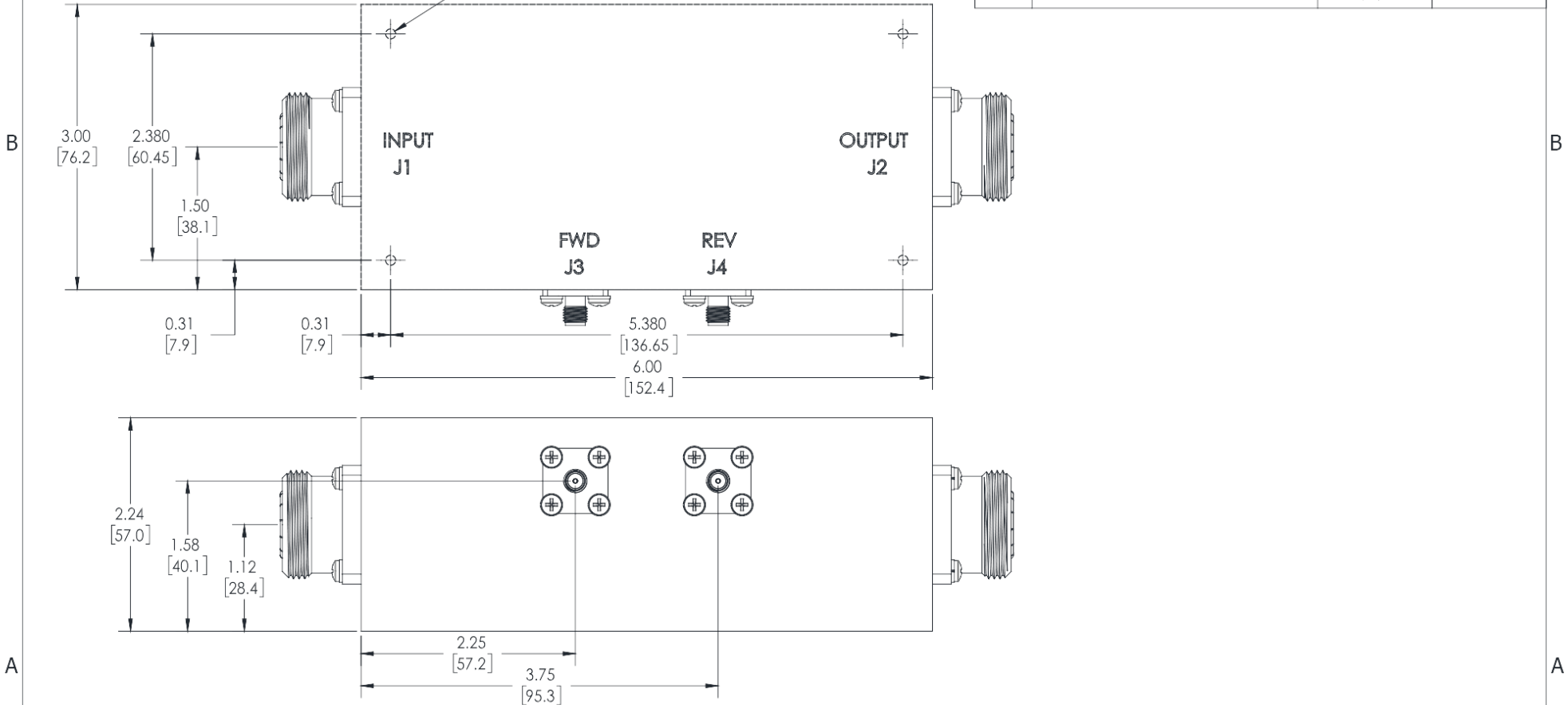
Werlatone, Inc.

Werlatone, Inc. 17 Jon Barrett Road Patterson, NY 12563 T:(845)278-2220 F:(845)278-3440 sales@werlatone.com www.werlatone.com

RESTRICTION ON USE, DUPLICATION OR DISCLOSURE OF PROPRIETARY INFORMATION

This document contains proprietary information which is the sole property of Werlatone, Inc.

REVISION HISTORY			
REV.	REVISION RECORD	DATE	APPROVED
A	ECN 9696	11/28/18	RB



NOTES: UNLESS OTHERWISE SPECIFIED

- MAT'L: ALUMINUM 6061-T6**
- FINISH: CHEM FILM PER MIL-DTL-5541F TYPE I CLASS 3 (YELLOW IRIDITE)**
- CONNECTORS:
J1, J2: 7/16 FEMALE
J3, J4: SMA FEMALE**

UNLESS OTHERWISE SPECIFIED	OWN	DATE	17 Jon Barrett Rd Patterson, NY 12563
• INTERPRET DRAWING LAW MIL-STD-100	SD	2/11/2019	W WERLATONE SINCE 1965
• DIMENSIONING PER ASME Y14.5M-2009	CHK	DATE	
• PARENTHESES FOR REF ONLY	CS	2/11/2019	TITLE
• DIMENSIONS ARE IN INCHES	ENGR	DATE	OUTLINE
• DIMENSIONAL LIMITS APPLY BEFORE PROCESSES	DATE		SIZE
• TOLERANCES:	DATE		CAGE CODE
ANGLES:	DATE		DWG NO
3 PL ± .005 [13]	DATE		REV
2 PL ± .015 [38]	DATE		A
• REMOVE ALL BURRS AND SHARP EDGES R.03 MAX	QA	DATE	SCALE
• CONCENTRICITY MACHINED DIA: .002 FDM	DATE		1:1
• MACHINE TOOL MISMATCH: .003 MAX	RLSE	DATE	10396-502
THIRD ANGLE PROJECTION	APPLICATION	USED ON	SHEET 1 OF 1

Restriction on use, duplication, or disclosure of proprietary information. This document contains proprietary information which is the sole property of Werlatone, Inc.
Werlatone, Inc. 17 Jon Barrett Road Patterson, NY 12563 T:(845)278-2220 F:(845)278-3440 sales@werlatone.com www.werlatone.com