
PRODUCT DATA SHEET
C5510

Non-Isolated Uneven Splitters (Taps): Utilized to un-evenly split a single run of 50 Ohm coaxial cable, hosting multiple frequency bands, so that a shorter corridor, tunnel, shaft, or hallway is provided a lesser portion of power on the main coaxial run than that required by a longer run. Non-Isolated Uneven Splitters are Bi-Directional, and unlike Directional Couplers, all ports can communicate with one another.

Features:

High Power Wide Bandwidths Small Size Flat Coupling Custom Designs Available

Electrical Specifications:

Frequency: 140 - 512 MHz
 Power: 100 W CW
 Coupling: 10 ± 1.0 dB Max.
 Insertion Loss: 0.75 dB Max.
 Flatness: ± 1.0 dB Max.
 VSWR (ML): 1.30:1 Max.

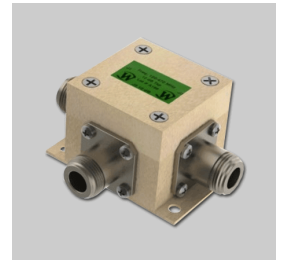
Mechanical Specifications:

Type: Connectorized
 Material: Aluminum 6061-T6
 Surface Finish: Chem. Film Per MIL-DTL-5541F
 Type I Class 3 (Yellow Iridite)
 RoHS Compliant Available
 Operating Temperature: -55°C to +75°C
 Storage Temperature: -60°C to +85°C
 Humidity: 95% Non-Condensing
 Size: 2.5 x 1.75 x 1.5"
 Weight: 7 ounces

Port Configurations:

Model	Input (J1)	Output (J2)	Fwd (J3)
C5510-10	N Female	N Female	N Female
C5510-12	N Female	N Female	SMA
C5510-102	SMA	SMA	SMA

Werlatone® Broadband Non-Isolated Uneven Splitters (Taps) are designed to tolerate the most stringent operating conditions associated with Distributive Antenna Systems (DAS).

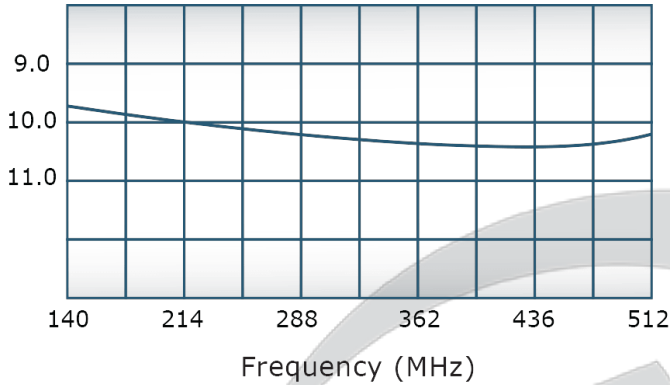


PRODUCT DATA SHEET

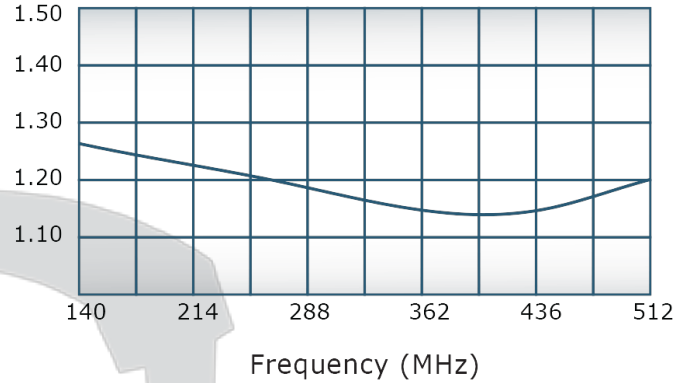
C5510

Performance Data (Specifications subject to change without notice):

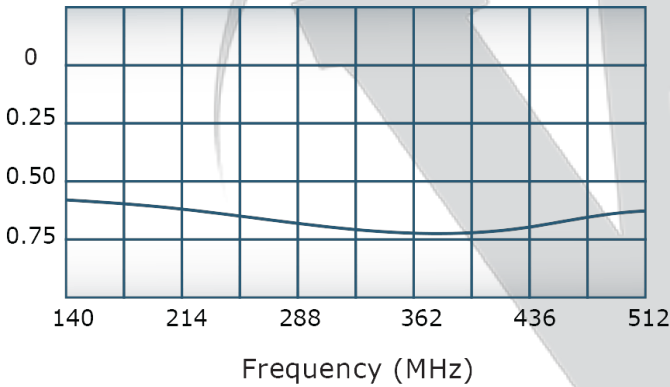
Coupling:



VSWR:



Insertion Loss:



For In-Building Applications



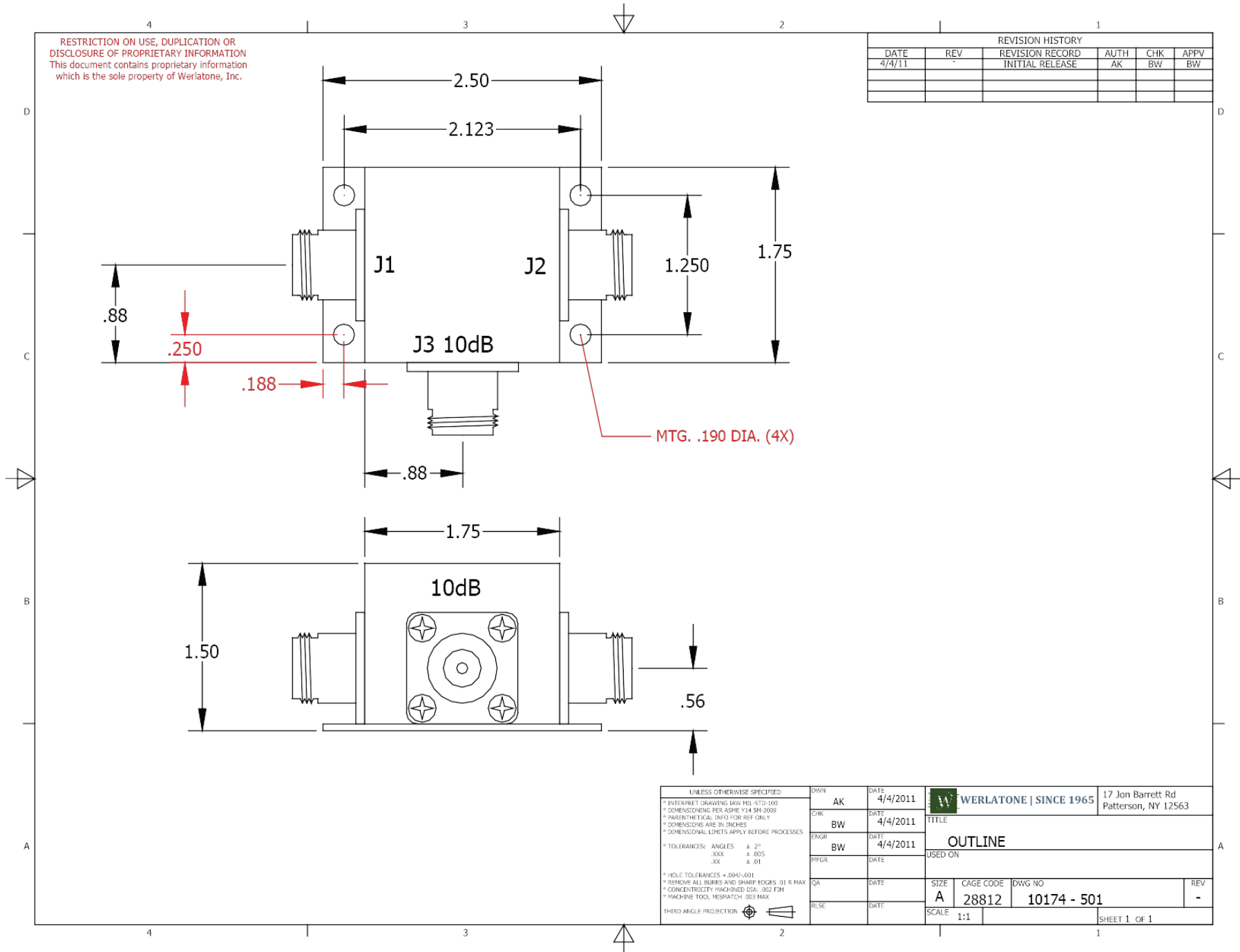
Restriction on use, duplication, or disclosure of proprietary information. This document contains proprietary information which is the sole property of

Werlatone, Inc.

Werlatone, Inc. 17 Jon Barrett Road Patterson, NY 12563 T:(845)278-2220 F:(845)278-3440 sales@werlatone.com www.werlatone.com

RESTRICTION ON USE, DUPLICATION OR DISCLOSURE OF PROPRIETARY INFORMATION
This document contains proprietary information which is the sole property of Werlatone, Inc.

REVISION HISTORY					
DATE	REV	REVISION RECORD	AUTH	CHK	APPV
4/4/11	-	INITIAL RELEASE	AK	BW	BW



UNLESS OTHERWISE SPECIFIED		DWN	DATE	WERLATONE SINCE 1965 17 Jon Barrett Rd Patterson, NY 12563
* INTERPRET DRAWING (AW MIL-STD-100) * DIMENSIONING PER ASME Y14.5M-2009 * PARENT THE TICAL: INFO FOR REF ONLY * DIMENSIONS ARE IN INCHES * DIMENSIONAL LIMITS APPLY BEFORE PROCESSES		AK	4/4/2011	
* TOLERANCES: ANGLES ± 2° .XXX ± .005 .XX ± .01		CHK	DATE	TITLE OUTLINE USED ON
* HOLE TOLERANCES ± .004/- .001 * REMOVE ALL BURRS AND SHARP EDGES: 01 R MAX * CONCENTRICITY MACHINED DIA: .002 FIM * MACHINE TOOL MESHATCH .003 MAX		BW	4/4/2011	
THIRD ANGLE PROJECTION		ENGR	DATE	SIZE A CAGE CODE 28812 DWG NO 10174 - 501 REV -
		PPGR	DATE	
		QA	DATE	SCALE 1:1 SHEET 1 OF 1
		RLSC	DATE	

Restriction on use, duplication, or disclosure of proprietary information. This document contains proprietary information which is the sole property of Werlatone, Inc.
Werlatone, Inc. 17 Jon Barrett Road Patterson, NY 12563 T:(845)278-2220 F:(845)278-3440 sales@werlatone.com www.werlatone.com