
PRODUCT DATA SHEET
C3807

4-Port Dual Directional Coupler employs two, 3-Port Uni-Directional Couplers, internally connected, in tandem, providing measurement of both forward and reverse power. Ideal for simultaneously monitoring a system's forward and reverse power and for reflectometer measurements. Unlike the Bi-Directional Coupler, the directivity of the Dual Directional Coupler is unaffected by the loads on the coupled ports.

Features:

High Power Wide Bandwidths Small Size Flat Coupling Custom Designs Available

Electrical Specifications:

Frequency: 0.03 - 30 MHz
 Power: 5250 W CW
 Coupling: 50 ± 1.0 dB Max.
 Insertion Loss: 0.05 dB Max.
 Flatness: ± 0.5 dB Max.
 VSWR (ML): 1.10:1 Max.
 Directivity: 20 dB Min.

Mechanical Specifications:

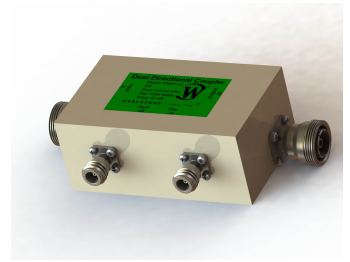
Type: Connectorized
 Material: Aluminum 6061-T6
 Surface Finish: Chem. Film Per MIL-DTL-5541F
 Type I Class 3 (Yellow Iridite)
 RoHS Compliant Available
 Operating Temperature: -55°C to +75°C
 Storage Temperature: -60°C to +85°C
 Humidity: 95% Non-Condensing
 Size: 5.0 x 3.0 x 2.24"

Connector Configurations:

Model	Input (J1)	Output (J2)	Fwd (J3)	Rev (J4)
C3807-10	N Female	N Female	N Female	N Female
C3807-12	N Female	N Female	SMA	SMA
C3807-13	N Female	N Female	BNC	BNC
C3807-20	7/16 Female	7/16 Female	N Female	N Female
C3807-23	7/16 Female	7/16 Female	BNC	BNC
C3807-30	LC Female	LC Female	N Female	N Female
C3807-64	HN Female	HN Female	BNC Female	BNC Female
C3807-751	HN Female	HN Male	BNC Female	BNC Female
C3807-QC-0	QC Block	QC Block	N Female	N Female
C3807-QC-2	QC Block	QC Block	SMA	SMA
C3807-7501	SQS Male	SQS Female	N Female	N Female
C3807-7503	SQS Male	SQS Female	BNC	BNC

Restriction on use, duplication, or disclosure of proprietary information. This document contains proprietary information which is the sole property of Werlatone, Inc.

Werlatone, Inc. 17 Jon Barrett Road Patterson, NY 12563 T:(845)278-2220 F:(845)278-3440 sales@werlatone.com www.werlatone.com

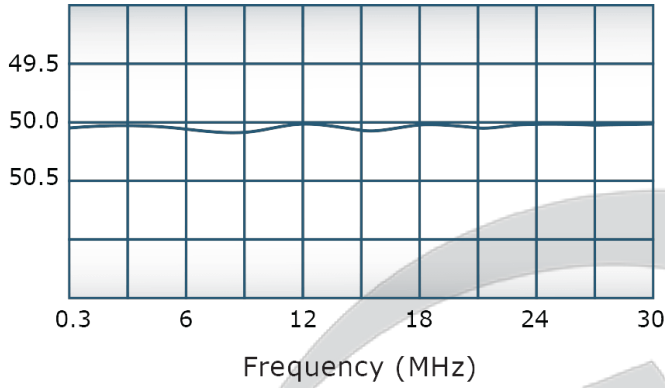


PRODUCT DATA SHEET

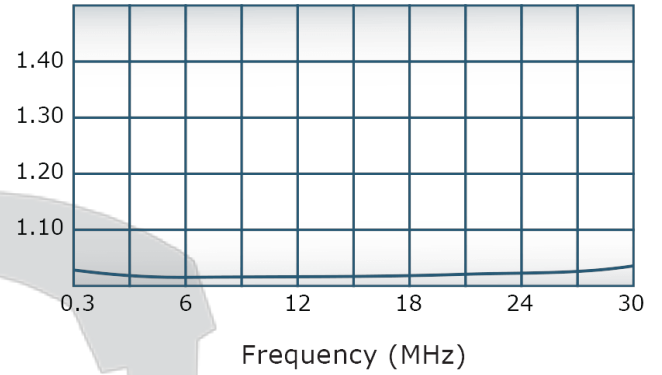
C3807

Performance Data (Specifications subject to change without notice):

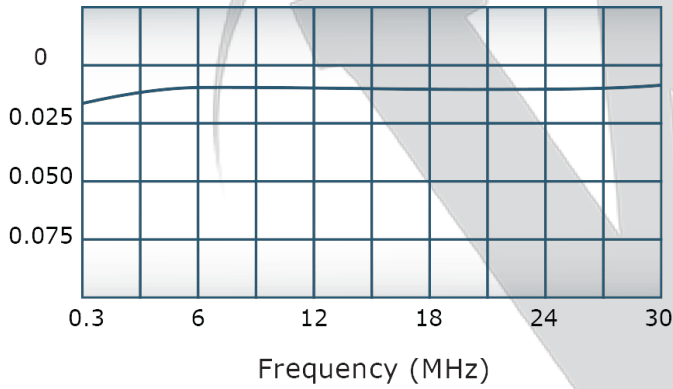
Coupling:



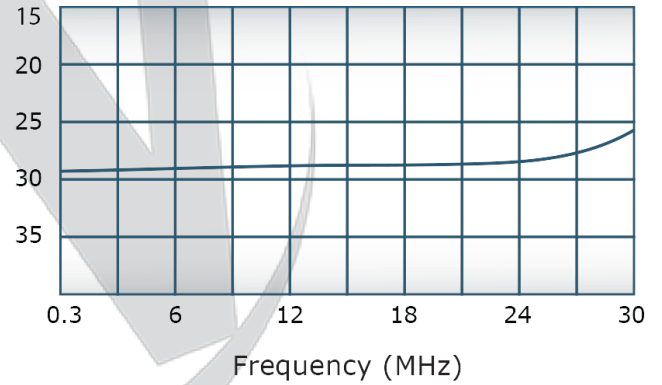
VSWR:



Insertion Loss:



Directivity:



Restriction on use, duplication, or disclosure of proprietary information. This document contains proprietary information which is the sole property of

Werlatone, Inc.

Werlatone, Inc. 17 Jon Barrett Road Patterson, NY 12563 T:(845)278-2220 F:(845)278-3440 sales@werlatone.com www.werlatone.com

RESTRICTION ON USE, DUPLICATION OR DISCLOSURE OF PROPRIETARY INFORMATION

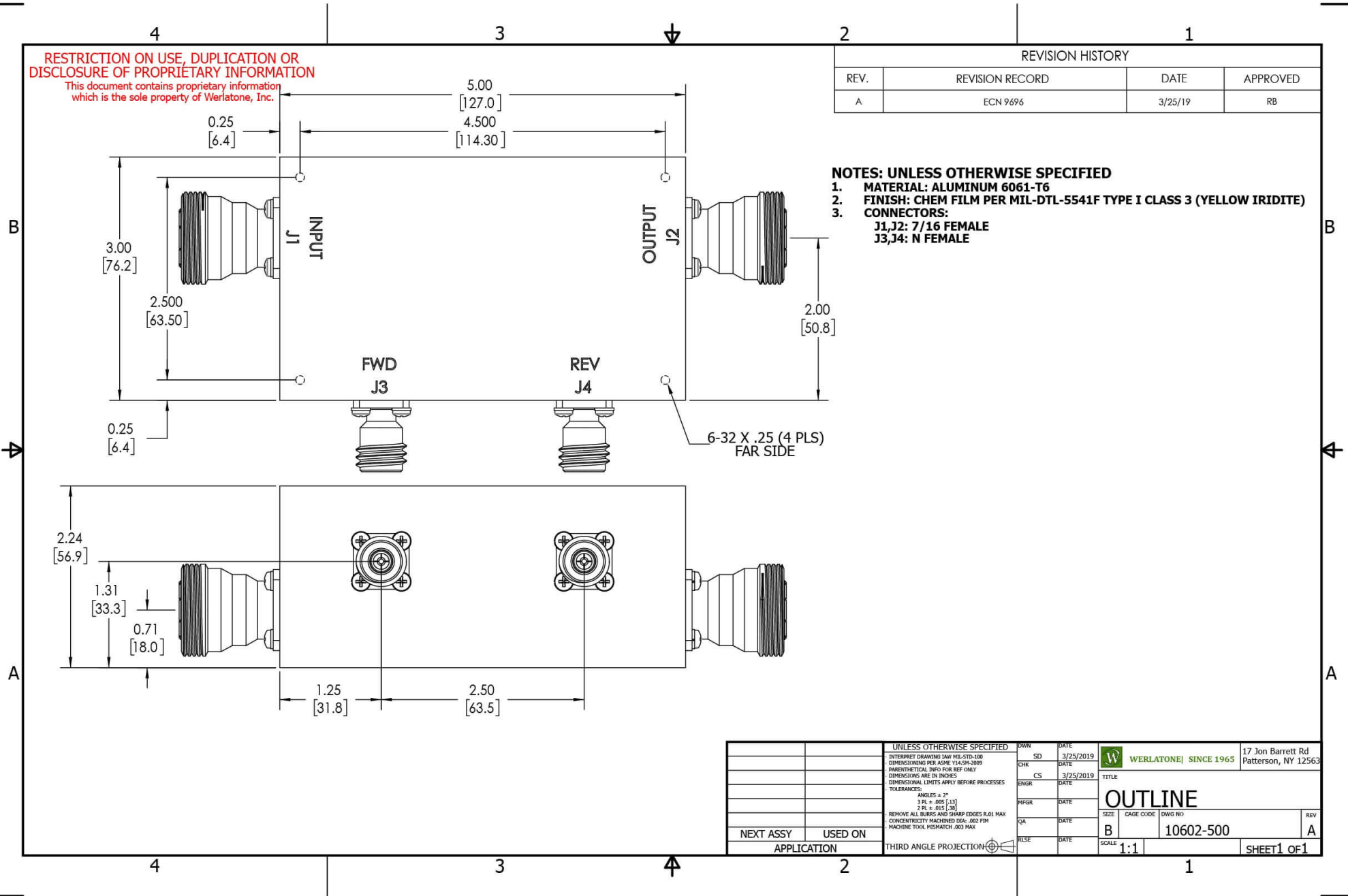
This document contains proprietary information which is the sole property of Werlatone, Inc.


REVISION HISTORY

REV.	REVISION RECORD	DATE	APPROVED
A	ECN 9696	3/25/19	RB

NOTES: UNLESS OTHERWISE SPECIFIED

- MATERIAL: ALUMINUM 6061-T6**
- FINISH: CHEM FILM PER MIL-DTL-5541F TYPE I CLASS 3 (YELLOW IRIDITE)**
- CONNECTORS:
J1,J2: 7/16 FEMALE
J3,J4: N FEMALE**



UNLESS OTHERWISE SPECIFIED		DWN	DATE	17 Jon Barrett Rd Patterson, NY 12563	
INTERPRET DRAWING IAW MIL-STD-100		SD	3/25/2019	 WERLATONE SINCE 1965	TITLE
DIMENSIONS PER ASME Y14.5M-2009		CHK	DATE		
PARENTHERTICAL INFO FOR REF ONLY		CS	3/25/2019	OUTLINE SIZE CAGE CODE DWG NO B 10602-500	REV A
DIMENSIONS ARE IN INCHES		ENGR	DATE		
DIMENSIONAL LIMITS APPLY BEFORE PROCESSES		INFR	DATE		
TOLERANCES:		QA	DATE		
ANGLES ± 2°		RLSE	DATE		
3 PL ± .005 [1.3]		THIRD ANGLE PROJECTION		SCALE	1:1
2 PL ± .015 [3.8]				SHEET	1 OF 1
REMOVE ALL BURRS AND SHARP EDGES R.01 MAX					
CONCENTRICITY MACHINED DIA: .002 FIM					
MACHINE TOOL MISMATCH .003 MAX					
NEXT ASSY	USED ON				
APPLICATION					

Restriction on use, duplication, or disclosure of proprietary information. This document contains proprietary information which is the sole property of Werlatone, Inc.
 Werlatone, Inc. 17 Jon Barrett Road Patterson, NY 12563 T:(845)278-2220 F:(845)278-3440 sales@werlatone.com www.werlatone.com