
**PRODUCT DATA SHEET**
**C3744**

**4-Port Dual Directional Coupler** employs two, 3-Port Uni-Directional Couplers, internally connected, in tandem, providing measurement of both forward and reverse power. Ideal for simultaneously monitoring a system's forward and reverse power and for reflectometer measurements. Unlike the Bi-Directional Coupler, the directivity of the Dual Directional Coupler is unaffected by the loads on the coupled ports.

**Features:**

High Power      Wide Bandwidths      Small Size      Flat Coupling      Custom Designs Available

**Electrical Specifications:**

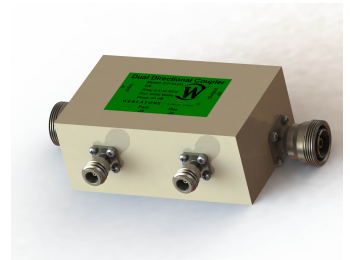
Frequency:      0.5 - 32 MHz  
 Power:          5,000 W CW  
 Coupling:        40 ± 1.0 dB Max.  
 Insertion Loss: 0.05 dB Max.  
 Flatness:        ± 0.5 dB Max.  
 VSWR (ML):    1.15:1 Max.  
 Directivity:     20 dB Min.

**Mechanical Specifications:**

Type:              Connectorized  
 Material:        Aluminum 6061-T6  
 Surface Finish: Chem. Film Per MIL-DTL-5541F  
                       Type I Class 3 (Yellow Iridite)  
                       RoHS Compliant Available  
 Operating Temperature: -55°C to +75°C  
 Storage Temperature: -60°C to +85°C  
 Humidity:        95% Non-Condensing  
 Size:              5.0 x 3.0 x 2.24"

**Connector Configurations:**

Model	Input (J1)	Output (J2)	Fwd (J3)	Rev (J4)
C3744-20	7/16 Female	7/16 Female	N Female	N Female
C3744-22	7/16 Female	7/16 Female	SMA	SMA
C3744-30	LC Female	LC Female	N Female	N Female
C3744-33	LC Female	LC Female	BNC Female	BNC Female
C3744-61	HN Female	HN Female	N Female	N Female
C3744-63	HN Female	HN Female	SMA	SMA
C3744-64	HN Female	HN Female	BNC	BNC
C3744-503	SQS Female	SQS Female	BNC Female	BNC Female

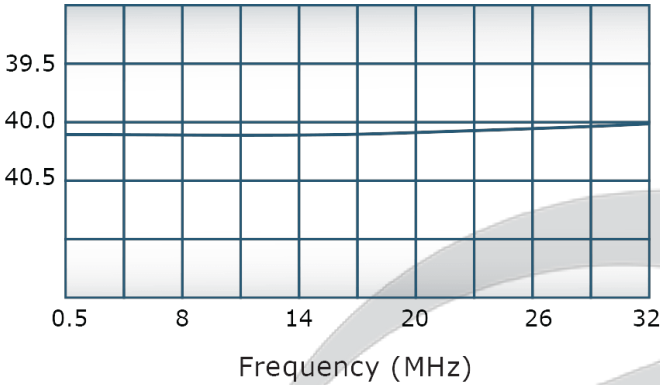


## PRODUCT DATA SHEET

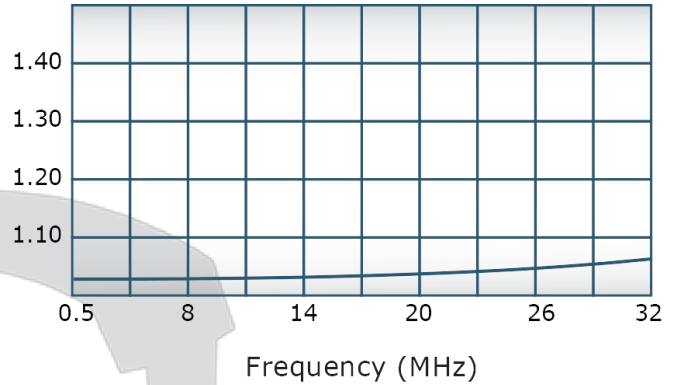
C3744

### Performance Data (Specifications subject to change without notice):

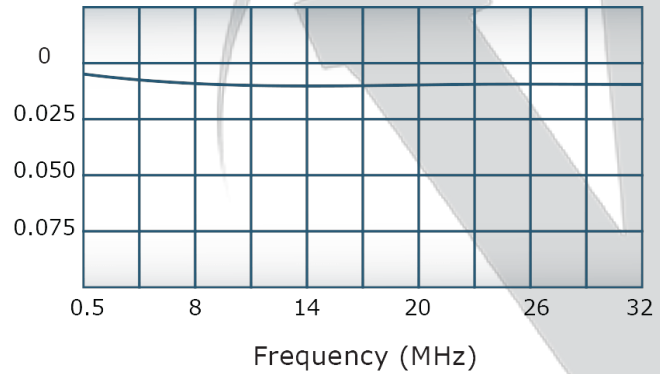
Coupling:



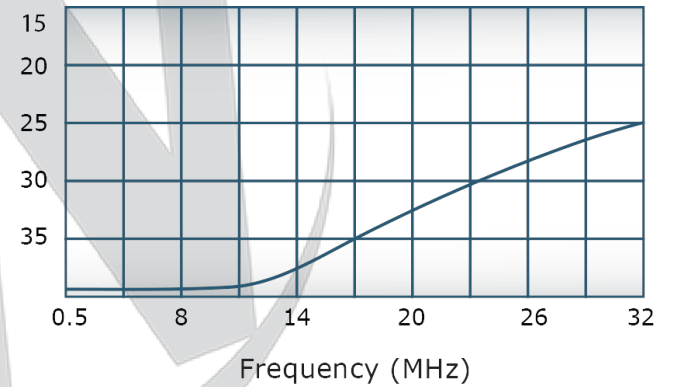
VSWR:



Insertion Loss:



Directivity:



Restriction on use, duplication, or disclosure of proprietary information. This document contains proprietary information which is the sole property of

Werlatone, Inc.

Werlatone, Inc. 17 Jon Barrett Road Patterson, NY 12563 T:(845)278-2220 F:(845)278-3440 sales@werlatone.com www.werlatone.com

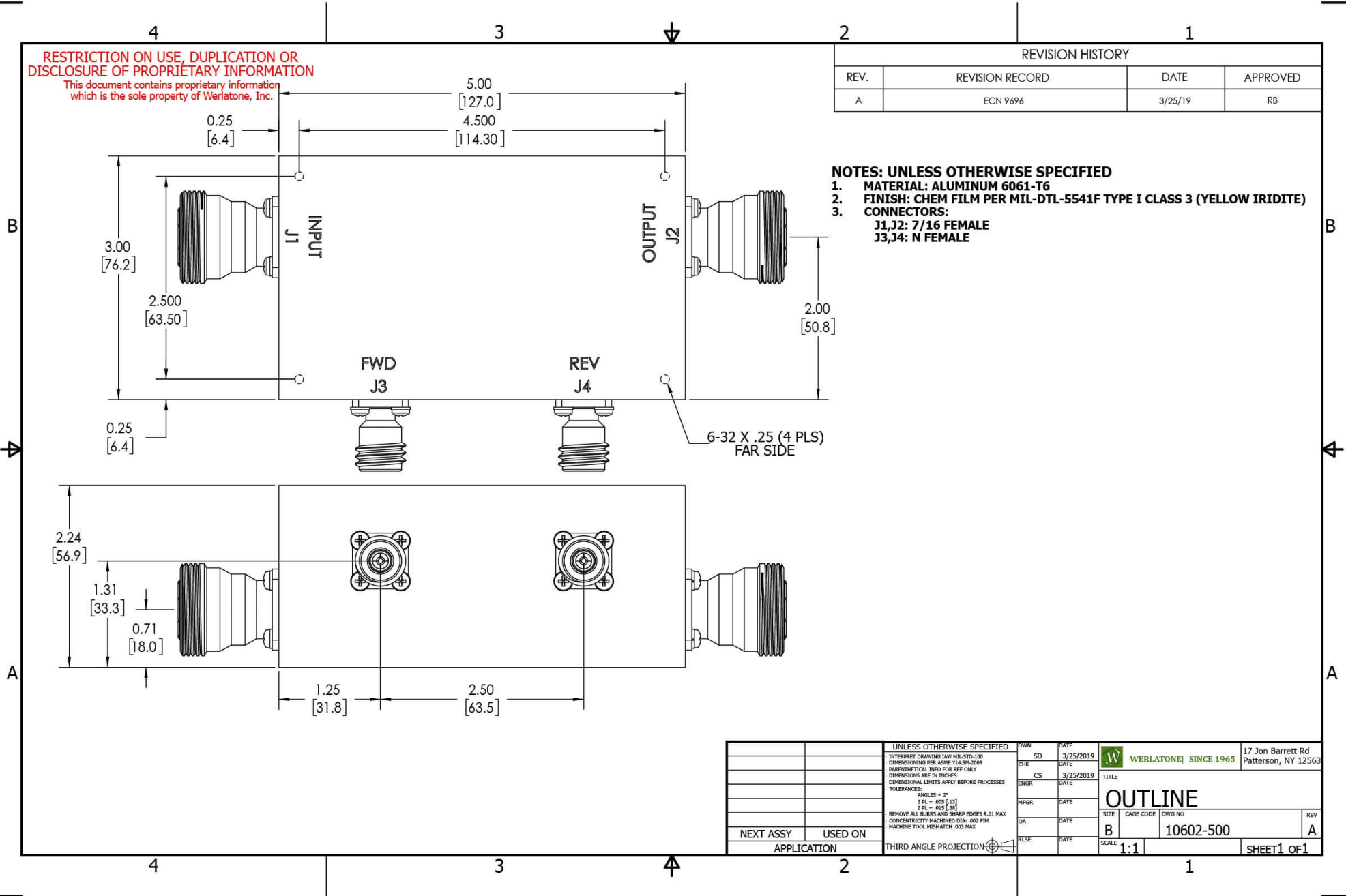
**RESTRICTION ON USE, DUPLICATION OR DISCLOSURE OF PROPRIETARY INFORMATION**

This document contains proprietary information which is the sole property of Werlatone, Inc.

REVISION HISTORY			
REV.	REVISION RECORD	DATE	APPROVED
A	ECN 9696	3/25/19	RB

**NOTES: UNLESS OTHERWISE SPECIFIED**

- MATERIAL: ALUMINUM 6061-T6**
- FINISH: CHEM FILM PER MIL-DTL-5541F TYPE I CLASS 3 (YELLOW IRIDITE)**
- CONNECTORS:  
J1,J2: 7/16 FEMALE  
J3,J4: N FEMALE**



UNLESS OTHERWISE SPECIFIED		DWN	DATE	17 Jon Barrett Rd Patterson, NY 12563
INTERPRET DRAWING IN ACCORDANCE WITH MIL-STD-100	SD	3/25/2019		
DIMENSIONS FOR ASSEMBLY PER ASME Y14.5M-2009	CHK	DATE		
PARENTHESES INFO FOR REF ONLY	CS	3/25/2019	TITLE	
DIMENSIONS ARE IN INCHES	ENGR	DATE	<b>OUTLINE</b>	
DIMENSIONAL LIMITS APPLY BEFORE PROCESSES	INFR	DATE	SIZE	CAGE CODE
TOLERANCES:	QA	DATE	B	10602-500
ANGLES ± 2°	RLSE	DATE	SCALE	1:1
3 PL ± .005 [13]				
2 PL ± .015 [38]				
REMOVE ALL BURRS AND SHARP EDGES R.01 MAX				
CONCENTRICITY MACHINED DIA: .002 FIM				
MACHINE TOOL MISMATCH .003 MAX.				
NEXT ASSY	USED ON	APPLICATION	THIRD ANGLE PROJECTION	REV A
				SHEET 1 OF 1

Restriction on use, duplication, or disclosure of proprietary information. This document contains proprietary information which is the sole property of Werlatone, Inc.  
 Werlatone, Inc. 17 Jon Barrett Road Patterson, NY 12563 T:(845)278-2220 F:(845)278-3440 sales@werlatone.com www.werlatone.com