
PRODUCT DATA SHEET
C3587

4-Port Dual Directional Coupler employs two, 3-Port Uni-Directional Couplers, internally connected, in tandem, providing measurement of both forward and reverse power. Ideal for simultaneously monitoring a system's forward and reverse power and for reflectometer measurements. Unlike the Bi-Directional Coupler, the directivity of the Dual Directional Coupler is unaffected by the loads on the coupled ports.

Features:

High Power Wide Bandwidths Small Size Flat Coupling Custom Designs Available

Electrical Specifications:

Frequency: 2 - 32 MHz
 Power: 5,000 W CW
 Coupling: 60 ± 1.0 dB Max.
 Insertion Loss: 0.05 dB Max.
 Flatness: ± 0.5 dB Max.
 VSWR (ML): 1.05:1 Max.
 Directivity: 20 dB Min.

Mechanical Specifications:

Type: Connectorized
 Material: Aluminum 6061-T6
 Surface Finish: Chem. Film Per MIL-DTL-5541F
 Type I Class 3 (Yellow Iridite)
 RoHS Compliant Available
 Operating Temperature: -55°C to +75°C
 Storage Temperature: -60°C to +85°C
 Humidity: 95% Non-Condensing
 Size: 5.0 x 3.0 x 2.24"

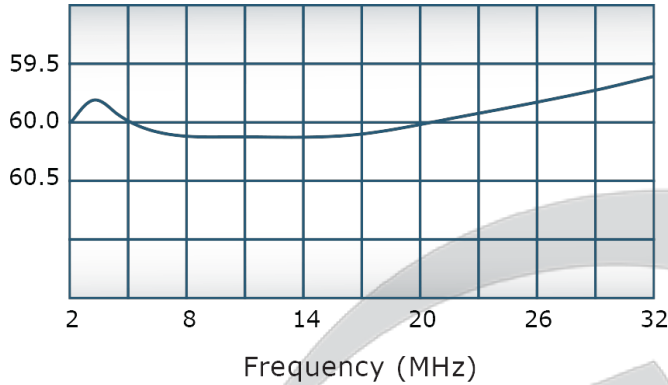
Connector Configurations:

Model	Input (J1)	Output (J2)	Fwd (J3)	Rev (J4)
C3587-10	N Female	N Female	N Female	N Female
C3587-12	N Female	N Female	SMA	SMA
C3587-13	N Female	N Female	BNC	BNC
C3587-20	7/16 Female	7/16 Female	N Female	N Female
C3587-30	LC Female	LC Female	N Female	N Female
C3587-33	LC Female	LC Female	BNC Female	BNC Female
C3587-61	HN Female	HN Female	N Female	N Female
C3587-63	HN Female	HN Female	SMA	SMA
C3587-64	HN Female	HN Female	SMA	SMA
C3587-503	SQS Female	SQS Female	BNC Female	BNC Female

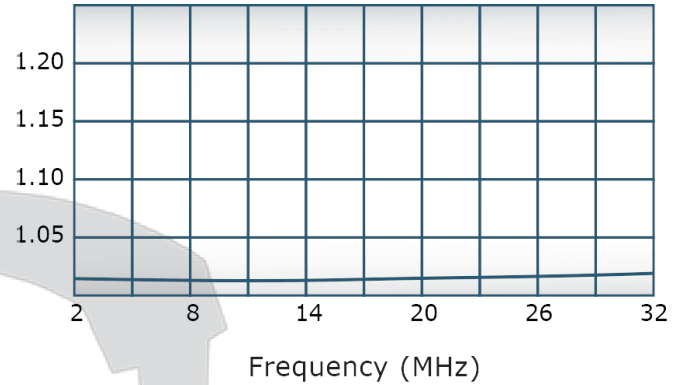


Performance Data (Specifications subject to change without notice):

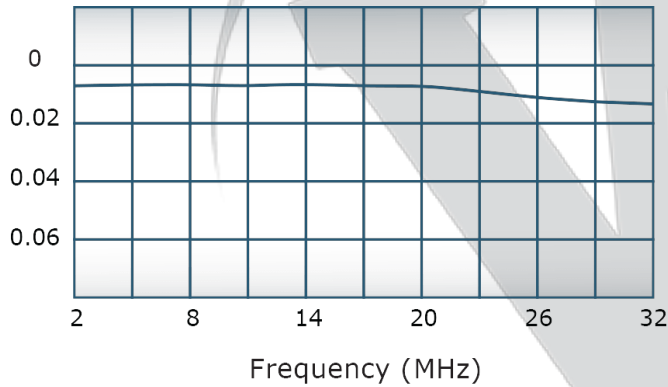
Coupling:



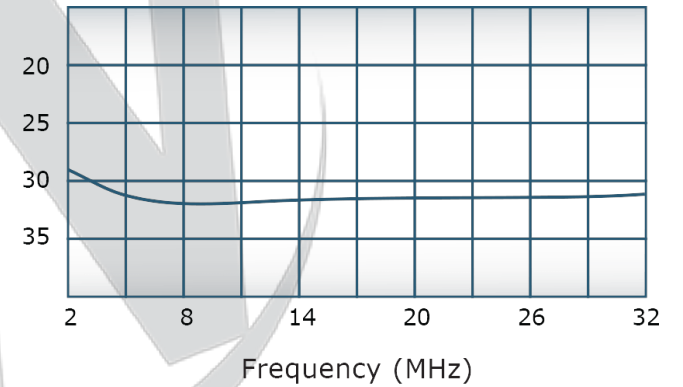
VSWR:



Insertion Loss:



Directivity:



Restriction on use, duplication, or disclosure of proprietary information. This document contains proprietary information which is the sole property of

Werlatone, Inc.

Werlatone, Inc. 17 Jon Barrett Road Patterson, NY 12563 T:(845)278-2220 F:(845)278-3440 sales@werlatone.com www.werlatone.com

RESTRICTION ON USE, DUPLICATION OR DISCLOSURE OF PROPRIETARY INFORMATION

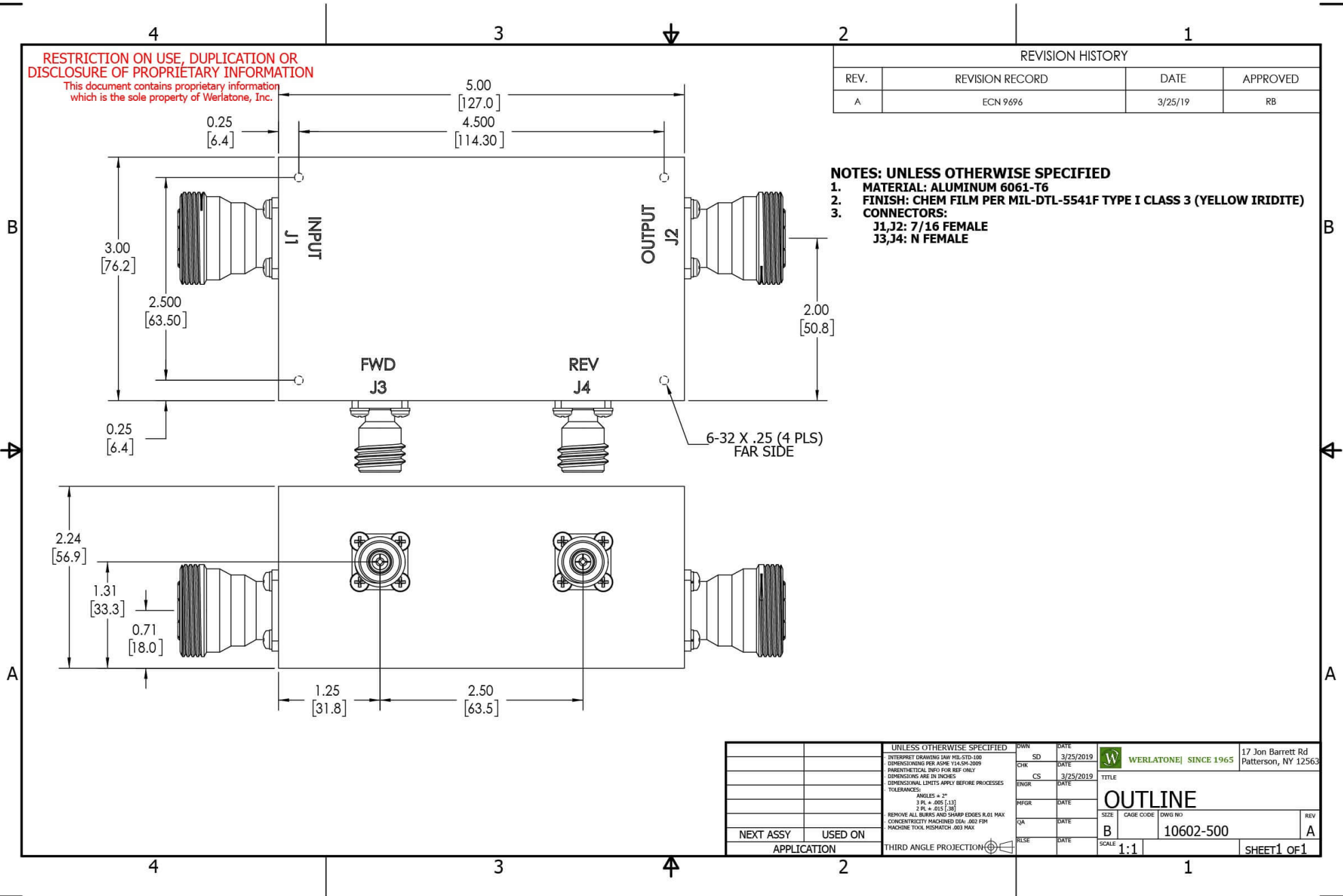
This document contains proprietary information which is the sole property of Werlatone, Inc.

REVISION HISTORY

REV.	REVISION RECORD	DATE	APPROVED
A	ECN 9696	3/25/19	RB

NOTES: UNLESS OTHERWISE SPECIFIED

- MATERIAL: ALUMINUM 6061-T6**
- FINISH: CHEM FILM PER MIL-DTL-5541F TYPE I CLASS 3 (YELLOW IRIDITE)**
- CONNECTORS:
J1,J2: 7/16 FEMALE
J3,J4: N FEMALE**



UNLESS OTHERWISE SPECIFIED		DWN	DATE	WERLATONE SINCE 1965 17 Jon Barrett Rd Patterson, NY 12563
INTERPRET DRAWING IAW MIL-STD-100 DIMENSIONS PER ASME Y14.5M-2009 PARENTHEetical INFO FOR REF ONLY DIMENSIONS ARE IN INCHES DIMENSIONAL LIMITS APPLY BEFORE PROCESSES		SD	3/25/2019	
TOLERANCES:		CHK	DATE	TITLE
ANGLES ± 2° 3 PL ± .005 [13] 2 PL ± .015 [38]		CS	3/25/2019	
REMOVE ALL BURRS AND SHARP EDGES R.01 MAX CONCENTRICITY MACHINED DIA: .002 FIM MACHINE TOOL MISMATCH .003 MAX.		ENGR	DATE	OUTLINE SIZE CAGE CODE DWG NO B 10602-500
NEXT ASSY	USED ON	INFR	DATE	
APPLICATION	THIRD ANGLE PROJECTION	QA	DATE	REV
		RLSE	DATE	A
			SCALE	SHEET 1 OF 1
			1:1	

Restriction on use, duplication, or disclosure of proprietary information. This document contains proprietary information which is the sole property of Werlatone, Inc.
 Werlatone, Inc. 17 Jon Barrett Road Patterson, NY 12563 T:(845)278-2220 F:(845)278-3440 sales@werlatone.com www.werlatone.com