


PRODUCT DATA SHEET
C10224

4-Port Dual Directional Coupler employs two, 3-Port Uni-Directional Couplers, internally connected, in tandem, providing measurement of both forward and reverse power. Ideal for simultaneously monitoring a system's forward and reverse power and for reflectometer measurements. Unlike the Bi-Directional Coupler, the directivity of the Dual Directional Coupler is unaffected by the loads on the coupled ports.

Features:

High Power Wide Bandwidths Small Size Flat Coupling Custom Designs Available

Electrical Specifications:

Frequency: 800 - 2800 MHz
 Power: 1000 W CW
 Coupling: 60 ± 1.0 dB Max.
 Insertion Loss: 0.2 dB Max.
 Flatness: ± 0.75 dB Max.
 VSWR (ML): 1.30:1 Max.
 Directivity: 20 dB Min.

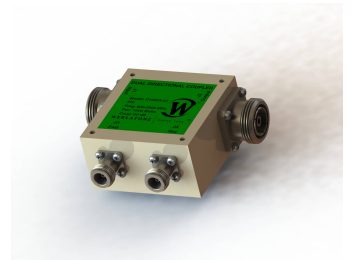
Mechanical Specifications:

Type: Connectorized
 Material: Aluminum 6061-T6
 Surface Finish: Chem. Film Per MIL-DTL-5541F
 Type I Class 3 (Yellow Iridite)
 RoHS Compliant Available
 Operating Temperature: -55°C to +75°C
 Storage Temperature: -60°C to +85°C
 Humidity: 95% Non-Condensing
 Size: 3.0 x 3.0 x 1.59"

Connector Configurations:

Model	Input (J1)	Output (J2)	Fwd (J3)	Rev (J4)
C10224-20	7/16 Female	7/16 Female	N Female	N Female
C10224-22	7/16 Female	7/16 Female	SMA	SMA
C10224-23	7/16 Female	7/16 Female	BNC	BNC
C10224-627	7/16 Female	7/16 Male	N Female	N Female
C10224-727	7/16 Male	7/16 Female	N Female	N Female
C10224-728	7/16 Male	7/16 Female	SMA	SMA

Werlatone® Broadband Dual, Uni, and Bi Directional RF Couplers are designed to tolerate the most stringent operating conditions associated with military and EMC testing environments. Many of our RF Directional Couplers, designated Mismatch Tolerant®, will operate continuously, at rated power, into a severe load mismatch condition. Our multi-octave Directional Couplers maintain exceptional coupling flatness, directivity, VSWR, and insertion loss.

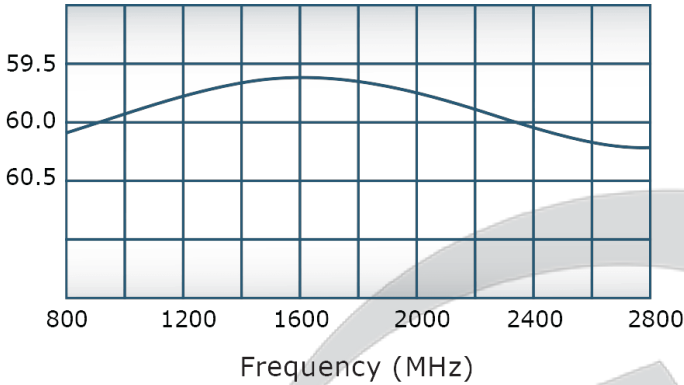


PRODUCT DATA SHEET

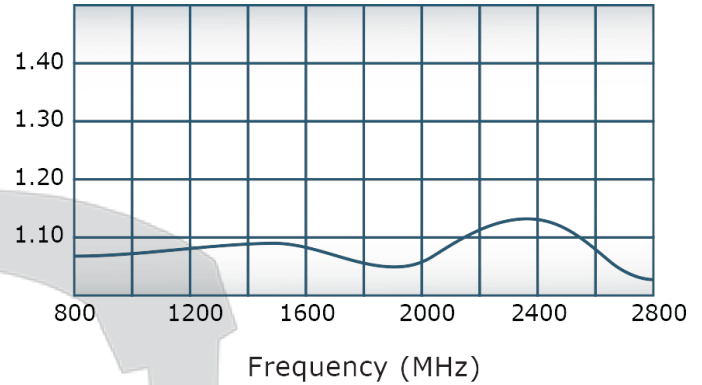
C10224

Performance Data (Specifications subject to change without notice):

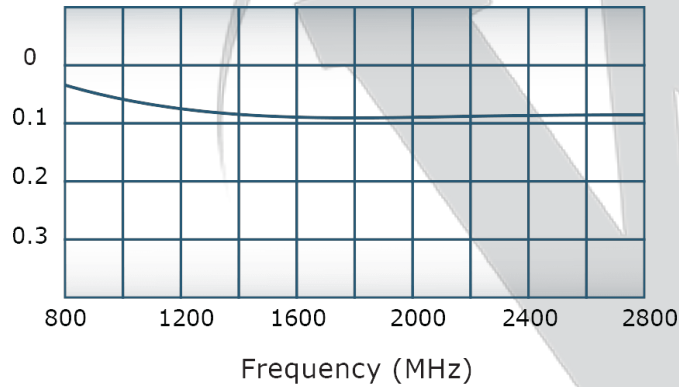
Coupling:



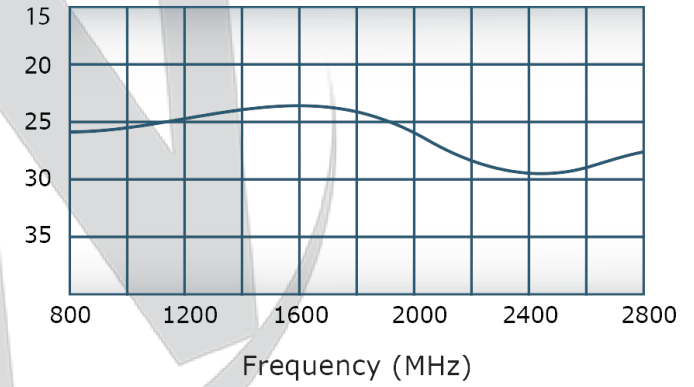
VSWR:



Insertion Loss:



Directivity:



Restriction on use, duplication, or disclosure of proprietary information. This document contains proprietary information which is the sole property of

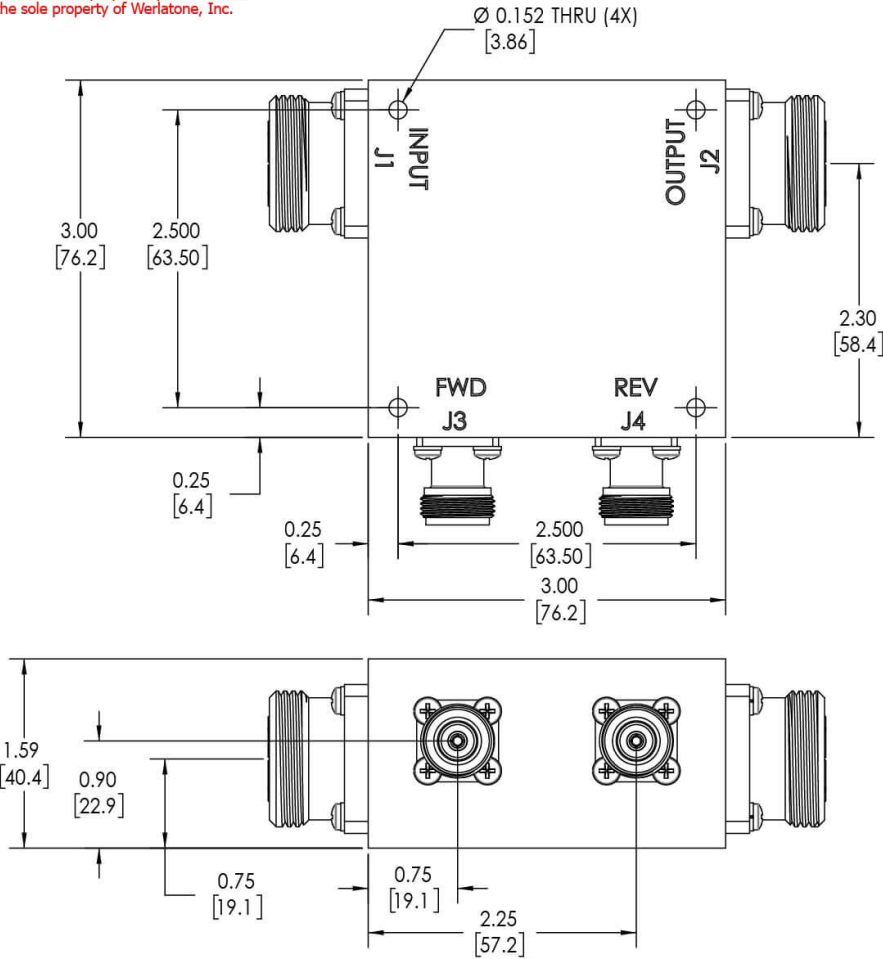
Werlatone, Inc.

Werlatone, Inc. 17 Jon Barrett Road Patterson, NY 12563 T:(845)278-2220 F:(845)278-3440 sales@werlatone.com www.werlatone.com

RESTRICTION ON USE, DUPLICATION OR DISCLOSURE OF PROPRIETARY INFORMATION
 This document contains proprietary information which is the sole property of Werlatone, Inc.

REVISION HISTORY			
REV.	REVISION RECORD	DATE	APPROVED
A	ECN 9696	5/13/2019	RB

- NOTES: UNLESS OTHERWISE SPECIFIED**
- MATERIAL: ALUMINUM 6061-T6**
 - FINISH: CHEM FILM PER MIL-DTL-5541F CLASS I TYPE 3 (YELLOW IRIDITE)**
 - CONNECTORS:**
 J1, J2: 7/16 FEMALE
 J3, J4: N FEMALE



		UNLESS OTHERWISE SPECIFIED	OWN	DATE	17 Jon Barrett Rd
		INTERPRET DRAWING IN ACCORDANCE WITH MIL-STD-100	SD	5/13/2019	Patterson, NY 12563
		DIMENSIONS PER ASME Y14.5M-2009	CHK	DATE	
		PARENTHESES FOR REF ONLY	CS	5/13/2019	
		DIMENSIONS ARE IN INCHES	ENGR	DATE	TITLE
		DIMENSIONAL LINES APPLY BEFORE PROCESSES			OUTLINE
		TOLERANCES:			SIZE
		ANGLES = 2°			CAGE CODE
		3 PL ± .005 [13]			DWG NO
		2 PL ± .015 [38]			REV
		REMOVE ALL BURRS AND SHARP EDGES R.01 MAX			B
		CONCENTRICITY MACHINED DIA: .002 FIM			10443-501
		MACHINE TOOL MISMATCH .003 MAX.			A
NEXT ASSY	USED ON	THIRD ANGLE PROJECTION	RELEASE	DATE	SCALE
APPLICATION					1:1

Restriction on use, duplication, or disclosure of proprietary information. This document contains proprietary information which is the sole property of Werlatone, Inc.
 Werlatone, Inc. 17 Jon Barrett Road Patterson, NY 12563 T:(845)278-2220 F:(845)278-3440 sales@werlatone.com www.werlatone.com