
PRODUCT DATA SHEET
C8098

4-Port Bi-Directional Coupler: Similar to the 3-Port Uni-Directional Coupler, except that both ends of the coupled line serve as coupled ports. Convenient for simultaneously monitoring both forward and reverse power. The directivity of this coupler design is, however, dependent upon well matched 50 Ohm loads on the coupled ports.

Features:

High Power Wide Bandwidths Small Size Flat Coupling Custom Designs Available

Electrical Specifications:

Frequency: 800 - 2000 MHz
 Power: 200 W CW
 Coupling: 30 ± 1.0 dB Max.
 Flatness: ± 0.7 dB Max.
 VSWR (ML): 1.20:1 Max.
 Directivity: 20 dB Min.

Mechanical Specifications:

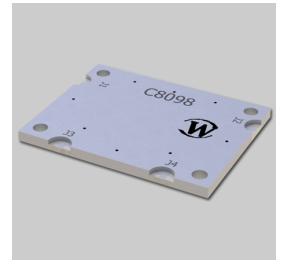
Type: Drop-In
 Operating Temperature: -55°C to +75°C
 Storage Temperature: -60°C to +85°C
 Surface Finish Options: C8098-Pb: Electrodeposited Tin/Lead
 C8098-Sn: Immersion Tin
 C8098-Ag: Immersion Silver
 C8098-Au: ENIG
 Size: 1.3 x 1.0 x 0.07"

Hatched areas denote metallization

Port Configurations:

J1 Input	J2 Output	J3 Forward (-30 dB)	J4 Reverse (-30 dB)
--------------------	---------------------	-------------------------------	-------------------------------

Werlatone® Broadband Dual, Uni, and Bi Directional RF Couplers are designed to tolerate the most stringent operating conditions associated with military and EMC testing environments. Many of our RF Directional Couplers, designated Mismatch Tolerant®, will operate continuously, at rated power, into a severe load mismatch condition. Our multi-octave Directional Couplers maintain exceptional coupling flatness, directivity, VSWR, and insertion loss.

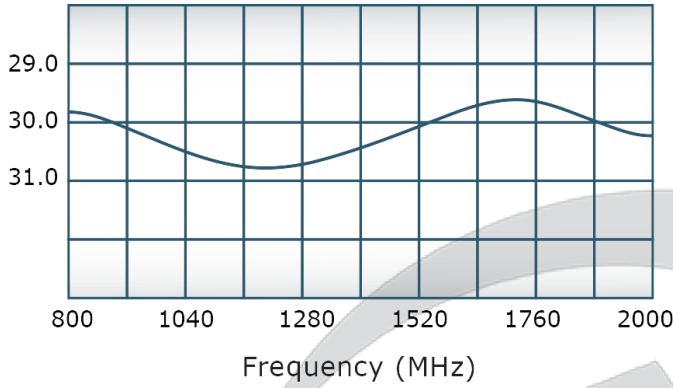


PRODUCT DATA SHEET

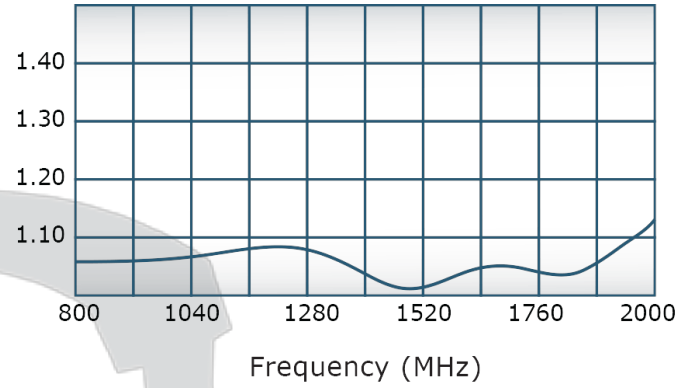
C8098

Performance Data (Specifications subject to change without notice):

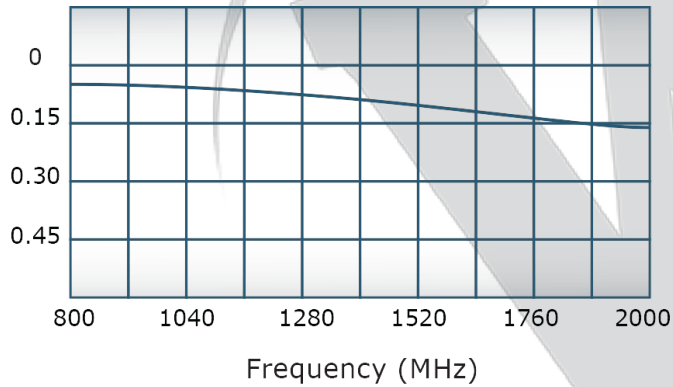
Coupling:



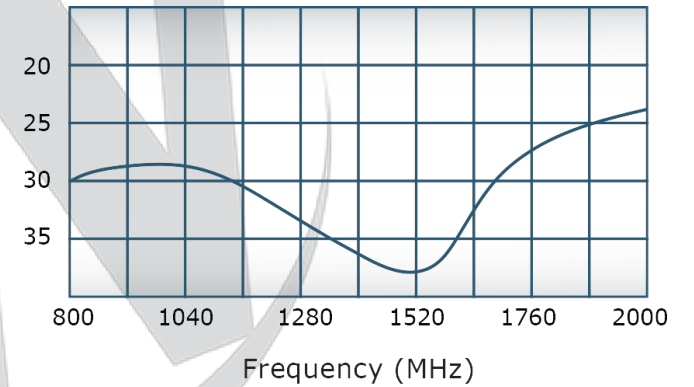
VSWR:



Insertion Loss:



Directivity:



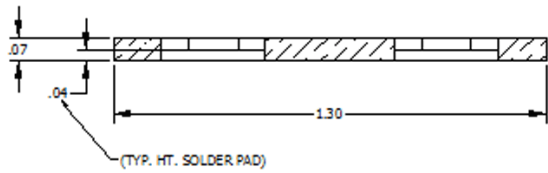
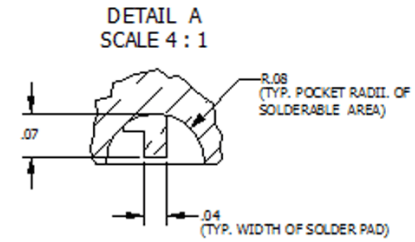
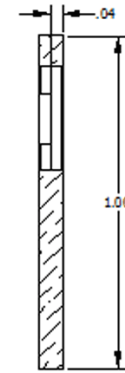
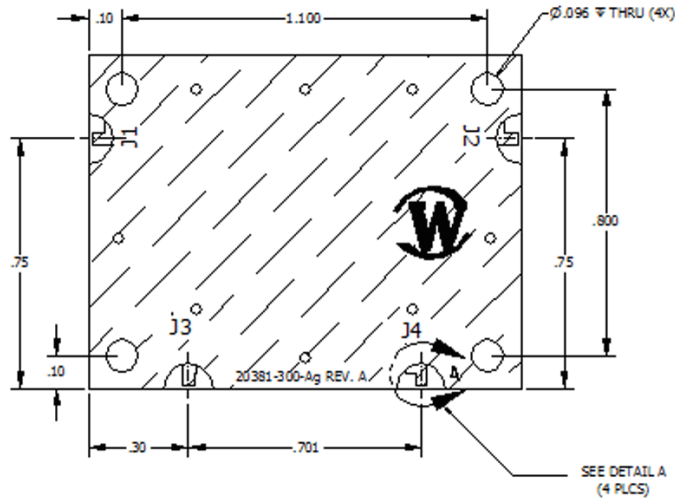
Restriction on use, duplication, or disclosure of proprietary information. This document contains proprietary information which is the sole property of

Werlatone, Inc.

Werlatone, Inc. 17 Jon Barrett Road Patterson, NY 12563 T:(845)278-2220 F:(845)278-3440 sales@werlatone.com www.werlatone.com

RESTRICTION ON USE, DUPLICATION OR DISCLOSURE OF PROPRIETARY INFORMATION
This document contains proprietary information which is the sole property of Werlatone, Inc.

REVISION HISTORY					
DATE	REV	REVISION DESCRIPTION	APP'D	CHK'D	APP'D
01/10/2008	A	PCB # 4912	NH	BAV	BAV
01/10/2008	K	PCB # 5122	NH	BAV	BAV



1. UNLESS OTHERWISE SPECIFIED: 2. DIMENSIONS SHOWN IN PARENT PARENTHESIS ARE FOR REFERENCE ONLY. 3. DIMENSIONS IN BRACKETS ARE FOR REFERENCE ONLY. 4. DIMENSIONS IN SQUARE BRACKETS ARE FOR REFERENCE ONLY. 5. DIMENSIONS IN CIRCLES ARE FOR REFERENCE ONLY. 6. DIMENSIONS IN DIAMETERS ARE FOR REFERENCE ONLY. 7. DIMENSIONS IN SQUARE ROOTS ARE FOR REFERENCE ONLY. 8. DIMENSIONS IN SQUARE ROOTS ARE FOR REFERENCE ONLY. 9. DIMENSIONS IN SQUARE ROOTS ARE FOR REFERENCE ONLY. 10. DIMENSIONS IN SQUARE ROOTS ARE FOR REFERENCE ONLY.		DATE: 01/10/2008 BY: NH CHECKED: 01/10/2008 BY: BW DATE: 01/10/2008 BY: BW	WERLATONE SINCE 1963 TITLE: OUTLINE DRAWN BY: BAV	2095 Route 22 Parsippany, NJ 07054
S.D. A D.W.L. 28812 D.W.E. 20381-500 ECN#	P.L. B	SHEET 1 OF 1		

Restriction on use, duplication, or disclosure of proprietary information. This document contains proprietary information which is the sole property of Werlatone, Inc.
 Werlatone, Inc. 17 Jon Barrett Road Patterson, NY 12563 T:(845)278-2220 F:(845)278-3440 sales@werlatone.com www.werlatone.com