
PRODUCT DATA SHEET
C11742

4-Port Dual Directional Coupler employs two, 3-Port Uni-Directional Couplers, internally connected, in tandem, providing measurement of both forward and reverse power. Ideal for simultaneously monitoring a system's forward and reverse power and for reflectometer measurements. Unlike the Bi-Directional Coupler, the directivity of the Dual Directional Coupler is unaffected by the loads on the coupled ports.

Features:

High Power Wide Bandwidths Small Size Flat Coupling Custom Designs Available

Electrical Specifications:

Frequency:	20 - 2500 MHz
Power:	200 W CW (20-500 MHz), 150 W CW (500-1000 MHz), 50 W CW (1000-2600 MHz)
Coupling:	40 ± 1.0 dB Max.
Insertion Loss:	0.5 dB Max.
Flatness:	± 1.0 dB Max.
VSWR (ML):	1.30:1 Max.
Directivity:	18 dB Min.

Mechanical Specifications:

Type:	Connectorized
Material:	Aluminum 6061-T6
Surface Finish:	Chem. Film Per MIL-DTL-5541F Type II Class 3 (Clear Iridite) RoHS Compliant Available
Operating Temperature:	-55°C to +75°C
Storage Temperature:	-60°C to +85°C
Humidity:	95% Non-Condensing
Size:	1.76 x 1.16 x 0.565"

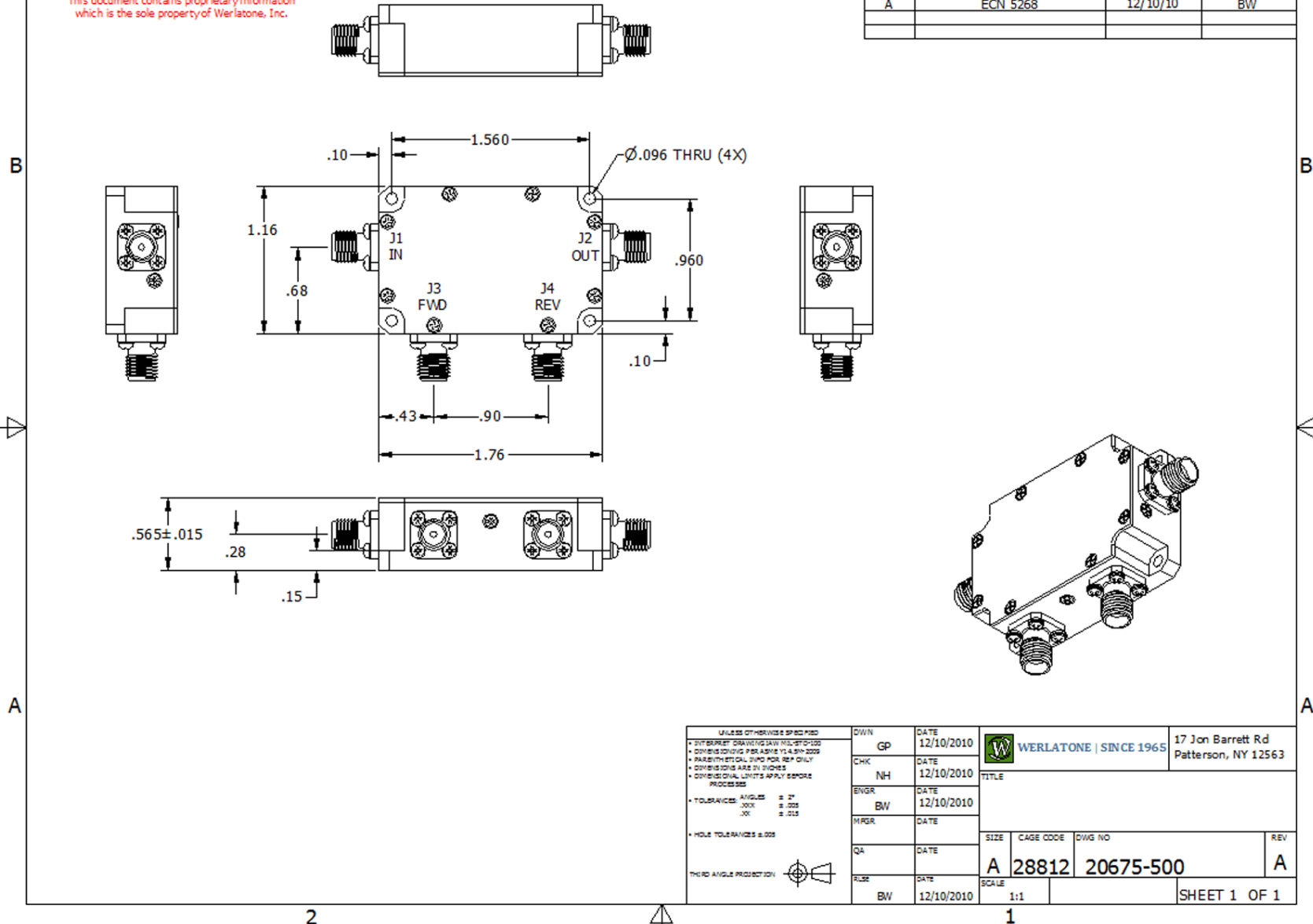
Connector Configurations:

Model	Input (J1)	Output (J2)	Fwd (J3)	Rev (J4)
C11742-102	SMA	SMA	SMA	SMA

Werlatone® Broadband Dual, Uni, and Bi Directional RF Couplers are designed to tolerate the most stringent operating conditions associated with military and EMC testing environments. Many of our RF Directional Couplers, designated Mismatch Tolerant®, will operate continuously, at rated power, into a severe load mismatch condition. Our multi-octave Directional Couplers maintain exceptional coupling flatness, directivity, VSWR, and insertion loss.

RESTRICTION ON USE, DUPLICATION OR DISCLOSURE OF PROPRIETARY INFORMATION
This document contains proprietary information which is the sole property of Werlatone, Inc.

REVISION HISTORY			
REV	REVISION RECORD	DATE	APPROVED
-	INITIAL RELEASE	7/23/10	BW
A	ECN 5268	12/10/10	BW



UNLESS OTHERWISE SPECIFIED		DWN	DATE	WERLATONE SINCE 1965	17 Jon Barrett Rd Patterson, NY 12563
<ul style="list-style-type: none"> • DWT BARRETT DRAWING (AWI) MFG 07/2010 • DIMENSIONS UNLESS OTHERWISE SPECIFIED ARE IN INCHES • DIMENSIONS ARE TO CENTER UNLESS OTHERWISE SPECIFIED • DIMENSIONAL LIMITS APPLY BEFORE FINISHING 		GP	12/10/2010		
<ul style="list-style-type: none"> • TOLERANCES: ANGLES ± 3° XXX: ± .005 XX: ± .015 		CHK	12/10/2010	ENGR	
<ul style="list-style-type: none"> • HOLE TOLERANCES ± .005 		BW	12/10/2010	MRGR	
THIRD ANGLE PROJECTION		QA		DATE	
		FILE		DATE	
		BW	12/10/2010	SCALE	
				SIZE	
				CAGE CODE	
				DWG NO	
				REV	
				A	28812
				20675-500	A
				1:1	SHEET 1 OF 1

Restriction on use, duplication, or disclosure of proprietary information. This document contains proprietary information which is the sole property of Werlatone, Inc.
Werlatone, Inc. 17 Jon Barrett Road Patterson, NY 12563 T:(845)278-2220 F:(845)278-3440 sales@werlatone.com www.werlatone.com