
PRODUCT DATA SHEET
D9399

Werlatone® Mismatch Tolerant® High Power Broadband RF Combiners and Dividers will operate into High Load VSWR Conditions, for extended periods, without damage. With extensive experience as a supplier to military platforms worldwide **Werlatone®** designs its High Power Broadband Combiners, Power Dividers, and N-Way Combiners for proper operation in the most stringent operating conditions.

Features:

High Power Wide Bandwidths Small Size Custom Designs Available

Electrical Specifications:

Frequency:	850 - 860 MHz
Power:	100 W CW
Insertion Loss:	0.4 dB Max.
VSWR:	1.20:1 Max.
Phase Balance:	$\pm 3^\circ$ Max.
Amplitude Balance:	0.2 dB Max.
Isolation:	Non-Isolated

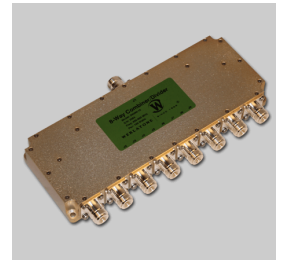
Mechanical Specifications:

Type:	Connectorized
Material:	Aluminum 6061-T6
Surface Finish:	Chem. Film Per MIL-DTL-5541F Type I Class 3 (Yellow Iridite) RoHS Compliant Available
Operating Temperature:	-55°C to +75°C
Storage Temperature:	-60°C to +85°C
Size:	9.5 x 3.5 x 1.125"

Connector Configurations:

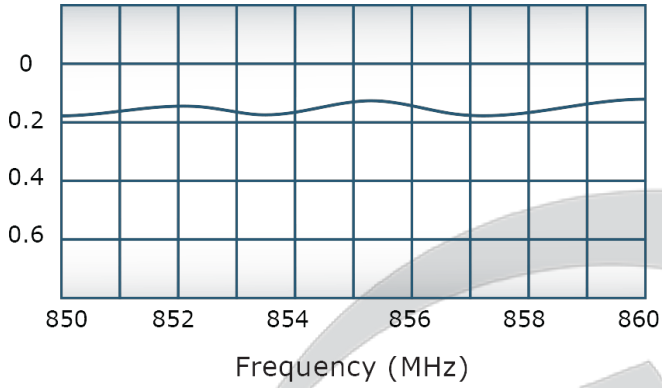
Model	Sum Port (J9)	Input/Output (J1-J8)
D9399-10	N Female	N Female

When specified, Werlatone® High Power Combiners and RF Dividers will tolerate full input failures on adjacent port(s). This insures that remaining transmitter(s) may continue to operate until the amplifier system can be properly shut down for maintenance. Choose your specific connector configuration from a list of options. Additional connector configurations for our High Power RF Combiners/Dividers, Non-Coherent Combiners, and N-Way Combiners are available upon request.

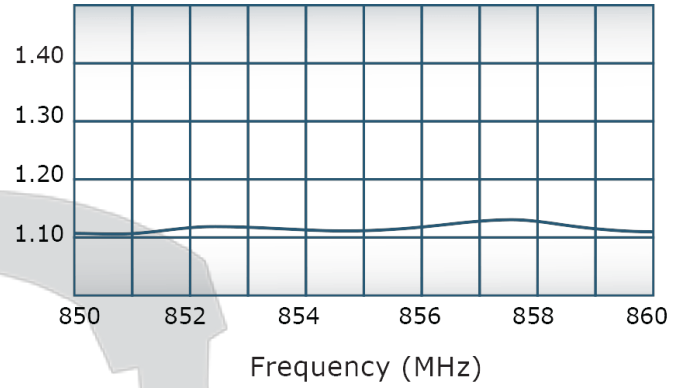


Performance Data (Specifications subject to change without notice):

Insertion Loss:



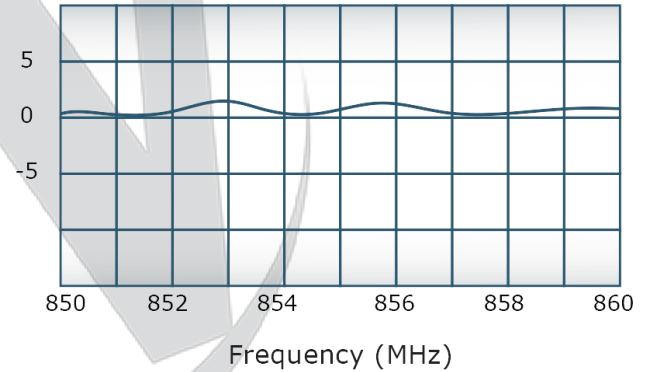
VSWR:



For In-Building Applications:



Phase Balance:



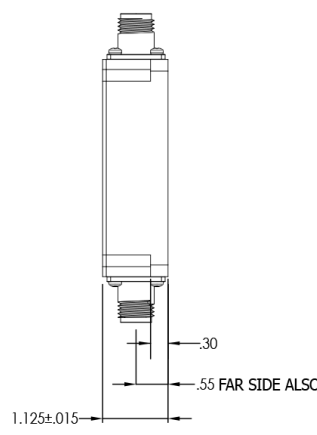
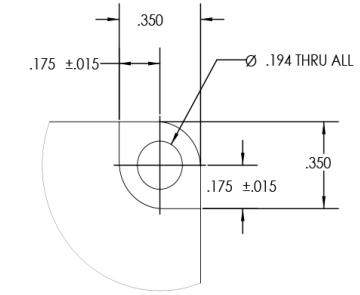
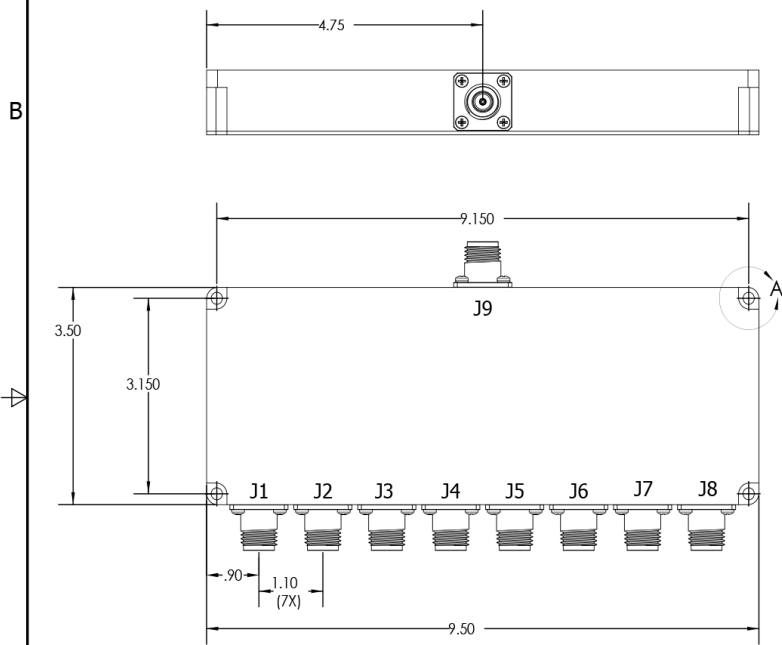
Restriction on use, duplication, or disclosure of proprietary information. This document contains proprietary information which is the sole property of

Werlatone, Inc.

Werlatone, Inc. 17 Jon Barrett Road Patterson, NY 12563 T:(845)278-2220 F:(845)278-3440 sales@werlatone.com www.werlatone.com

RESTRICTION ON USE, DUPLICATION OR DISCLOSURE OF PROPRIETARY INFORMATION
 This document contains proprietary information which is the sole property of Werlatone, Inc.

REVISIONS			
REV.	REVISION RECORD	DATE	APPROVED
-	PRE-RELEASE	6/5/2012	BW



UNLESS OTHERWISE SPECIFIED		DATE	6/5/2012	17 Jon Barrett Rd Patterson, NY 12563
INTERSPRT DRAWING IAW MIL-STD-100	DATE	6/5/2012	WERLATONE SINCE 1965	
DIMENSIONS ARE PER ASME Y14.5M-2009	DATE	6/5/2012		
ISOMETRIC DIMENSIONS ARE FOR REF ONLY	DATE	6/5/2012		
DIMENSIONS ARE IN INCHES	DATE	6/5/2012		
DIMENSIONAL UNITS APPLY BEFORE PROCESSES	DATE	6/5/2012		
TOLERANCES:	DATE	6/5/2012		
ANGLES = 3°	DATE	6/5/2012		
3 RL ± .005	DATE	6/5/2012		
2 PL ± .015	DATE	6/5/2012		
20907-300 REV- D9399	DATE	6/5/2012		
NEXT ASSY USED ON	DATE	6/5/2012		
APPLICATION	DATE	6/5/2012		
THIRD ANGLE PROJECTION	DATE	6/5/2012		
DATE	DATE	DATE	DATE	DATE
SCALE	SCALE	SCALE	SCALE	SCALE
1:2	1:2	1:2	1:2	1:2
SHEET 1 OF 1	SHEET 1 OF 1	SHEET 1 OF 1	SHEET 1 OF 1	SHEET 1 OF 1

Restriction on use, duplication, or disclosure of proprietary information. This document contains proprietary information which is the sole property of Werlatone, Inc.
 Werlatone, Inc. 17 Jon Barrett Road Patterson, NY 12563 T:(845)278-2220 F:(845)278-3440 sales@werlatone.com www.werlatone.com