



## PRODUCT DATA SHEET

D9079

**Werlatone® Mismatch Tolerant®** High Power Broadband RF Combiners and Dividers will operate into High Load VSWR Conditions, for extended periods, without damage. With extensive experience as a supplier to military platforms worldwide **Werlatone®** designs its High Power Broadband Combiners, Power Dividers, and N-Way Combiners for proper operation in the most stringent operating conditions.

### Features:

High Power      Wide Bandwidths      Small Size      High Isolation      Custom Designs Available

### Electrical Specifications:

Frequency: 10 - 165 MHz  
Power: 800 W CW  
Insertion Loss: 0.65 dB Max.  
VSWR: 1.50:1 Max.  
Phase Balance: ± 5° Max.  
Amplitude Balance: 0.35 dB Max.  
Isolation: 20 dB Min.

### Mechanical Specifications:

Type: Connectorized  
Material: Aluminum 6061-T6  
Surface Finish: Chem. Film Per MIL-DTL-5541F Type II Class 3 (Clear Iridite) RoHS Compliant Available  
Operating Temperature: -55°C to +75°C  
Storage Temperature: -60°C to +85°C  
Size: 17.0 x 7.0 x 2.25"

### Connector Configurations:

Model	Sum Port (J9)	Inputs (J1-J8)
D9079-10	N Female	N Female
D9079-12	N Female	SMA

**When specified, Werlatone® High Power Combiners and RF Dividers** will tolerate full input failures on adjacent port(s). This insures that remaining transmitter(s) may continue to operate until the amplifier system can be properly shut down for maintenance. Choose your specific connector configuration from a list of options. Additional connector configurations for our High Power RF Combiners/Dividers, Non-Coherent Combiners, and N-Way Combiners are available upon request.

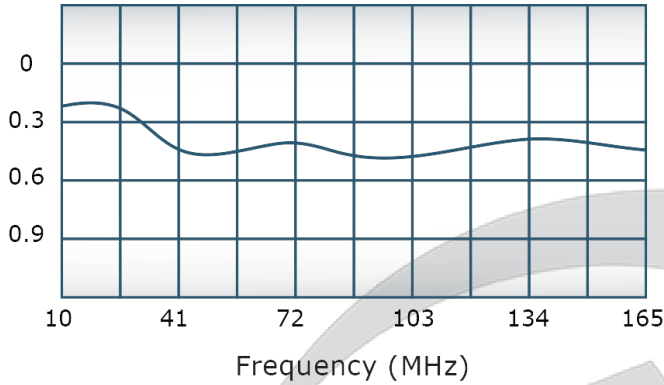
**Restriction on use, duplication, or disclosure of proprietary information.** This document contains proprietary information which is the sole property of Werlatone, Inc.

Werlatone, Inc. 17 Jon Barrett Road Patterson, NY 12563 T:(845)278-2220 F:(845)278-3440 sales@werlatone.com www.werlatone.com

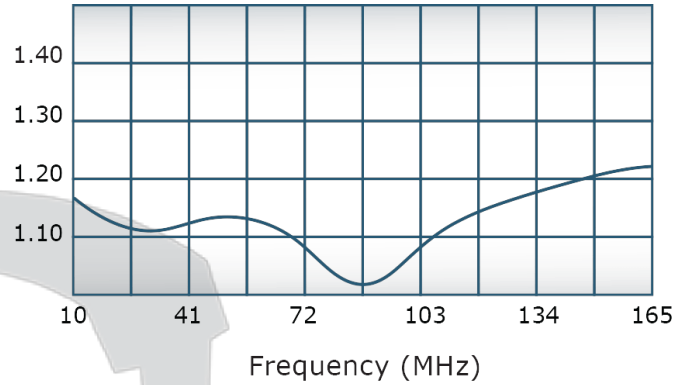


## Performance Data (Specifications subject to change without notice):

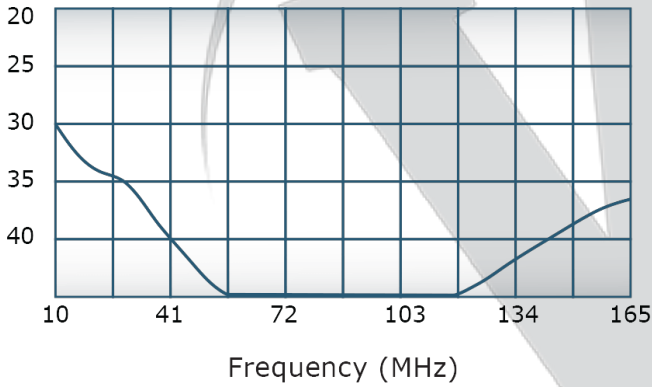
Insertion Loss:



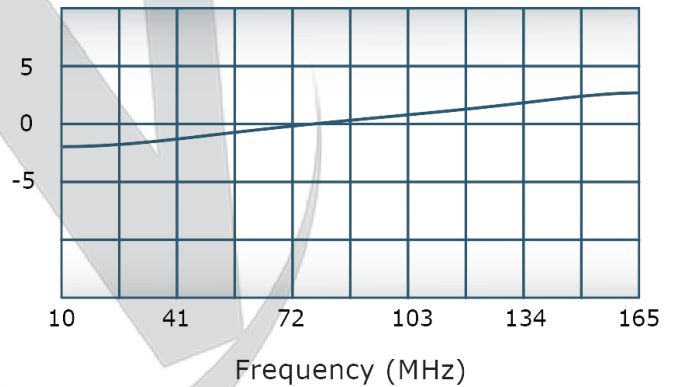
VSWR:



Isolation:



Phase Balance:

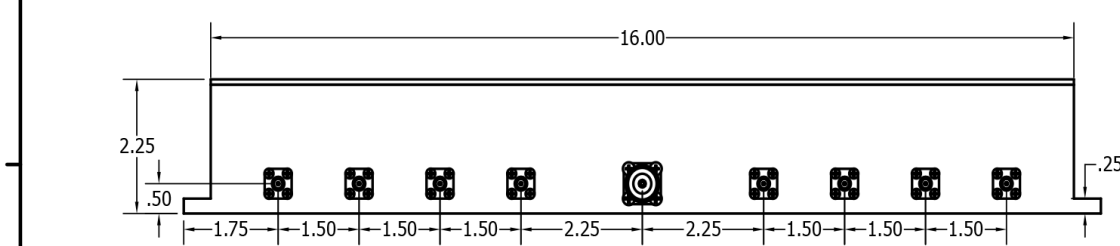
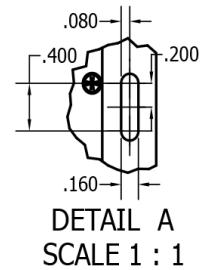
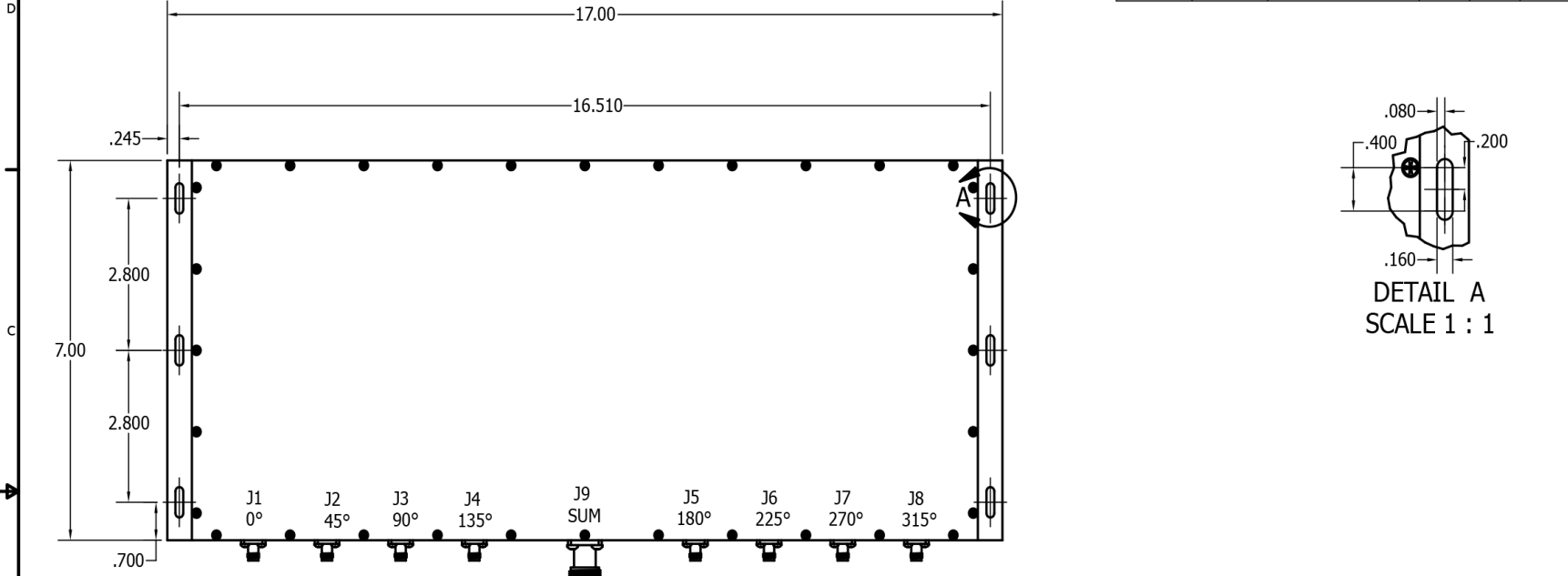


Restriction on use, duplication, or disclosure of proprietary information. This document contains proprietary information which is the sole property of Werlatone, Inc.

Werlatone, Inc. 17 Jon Barrett Road Patterson, NY 12563 T:(845)278-2220 F:(845)278-3440 sales@werlatone.com www.werlatone.com

RESTRICTION ON USE, DUPLICATION OR DISCLOSURE OF PROPRIETARY INFORMATION  
This document contains proprietary information which is the sole property of Werlatone, Inc.

REVISION HISTORY						
DATE	REV	REVISION RECORD	AUTH	CHK	APPV	
12/9/10	-	PRE RELEASE	PR	GP		



UNLESS OTHERWISE SPECIFIED		DWN	DATE	<b>WERLATONE</b> SINCE 1965 17 Jon Barrett Rd Patterson, NY 12563			
* INTERPRET DRAWING IAW MIL-STD-100 * DIMENSIONING PER ASME Y14.5M-2009 * PARENTHETICAL INFO FOR REF ONLY * DIMENSIONS ARE IN INCHES * DIMENSIONAL LIMITS APPLY BEFORE PROCESSES		PR	12/8/2010				
* TOLERANCES: ANGLES     ± 2° .XXX       ± .005 .XX         ± .01 * HOLE TOLERANCES +.004/-.001		CHK	DATE	TITLE <b>OUTLINE</b> USED ON <b>D8745</b>			
THIRD ANGLE PROJECTION		GP	12/9/2010				
		ENGR	DATE	SIZE	CAGE CODE	DWG NO	REV
		MFR	DATE	C	28812	20704-500	-
		QA	DATE	SCALE		SHEET 1 OF 1	
		RLSE	DATE	1/2			

Restriction on use, duplication, or disclosure of proprietary information. This document contains proprietary information which is the sole property of Werlatone, Inc.  
Werlatone, Inc. 17 Jon Barrett Road Patterson, NY 12563 T:(845)278-2220 F:(845)278-3440 sales@werlatone.com www.werlatone.com