
**PRODUCT DATA SHEET**
**D8803**

**Werlatone® Mismatch Tolerant®** High Power Broadband RF Combiners and Dividers will operate into High Load VSWR Conditions, for extended periods, without damage. With extensive experience as a supplier to military platforms worldwide **Werlatone®** designs its High Power Broadband Combiners, Power Dividers, and N-Way Combiners for proper operation in the most stringent operating conditions.

**Features:**

High Power      Wide Bandwidths      Small Size      High Isolation      Custom Designs Available

**Electrical Specifications:**

Frequency:                      20 - 300 MHz  
 Power:                              1750 W CW  
 Insertion Loss:                0.5 dB Max.  
 VSWR:                              1.30:1 Max.  
 Phase Balance:                 $\pm 5^\circ$  Max.  
 Amplitude Balance:         0.2 dB Max.  
 Isolation:                         18 dB Min.

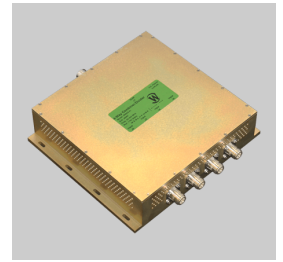
**Mechanical Specifications:**

Type:                                Connectorized  
 Material:                         Aluminum 6061-T6  
 Surface Finish:                Chem. Film Per MIL-DTL-5541F Type I Class 3 (Yellow Iridite) RoHS Compliant Available  
 Operating Temperature:      -55°C to +75°C  
 Storage Temperature:        -60°C to +85°C  
 Weight:                            11.25 lbs.  
 Size:                                9.4 x 8.4 x 2.25"

**Connector Configurations:**

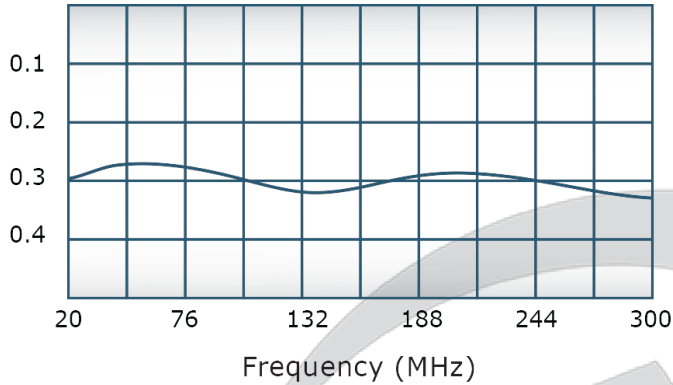
Model	Sum Port (J1)	Input/Output (J2-J5)
D8803-20	7/16 Female	N Female
D8803-40	SC Female	SC Female
D8803-41	SC Female	N Female

**When specified, Werlatone® High Power Combiners and RF Dividers** will tolerate full input failures on adjacent port(s). This insures that remaining transmitter(s) may continue to operate until the amplifier system can be properly shut down for maintenance. Choose your specific connector configuration from a list of options. Additional connector configurations for our High Power RF Combiners/Dividers, Non-Coherent Combiners, and N-Way Combiners are available upon request.

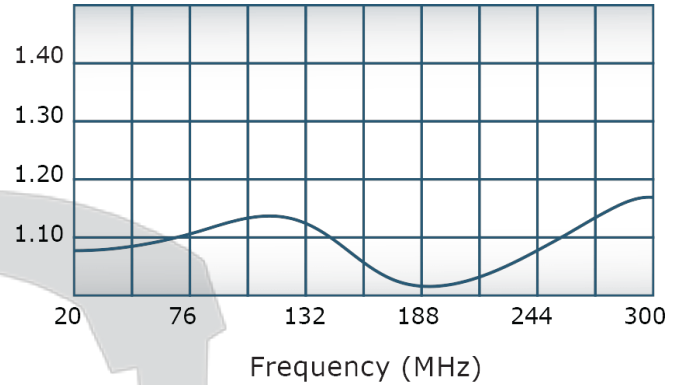


## Performance Data (Specifications subject to change without notice):

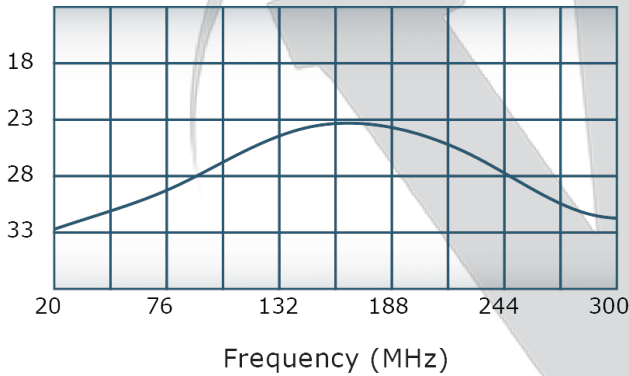
Insertion Loss:



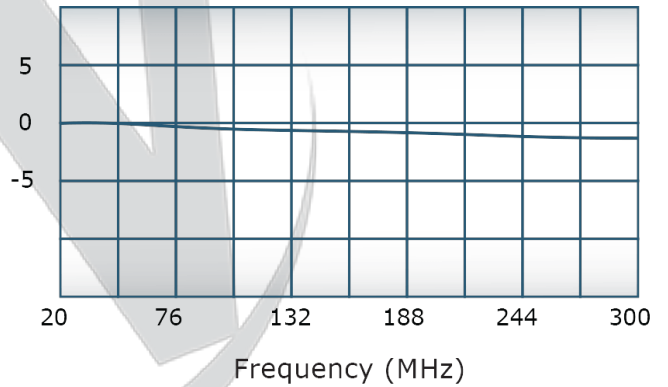
VSWR:



Isolation:



Phase Balance:



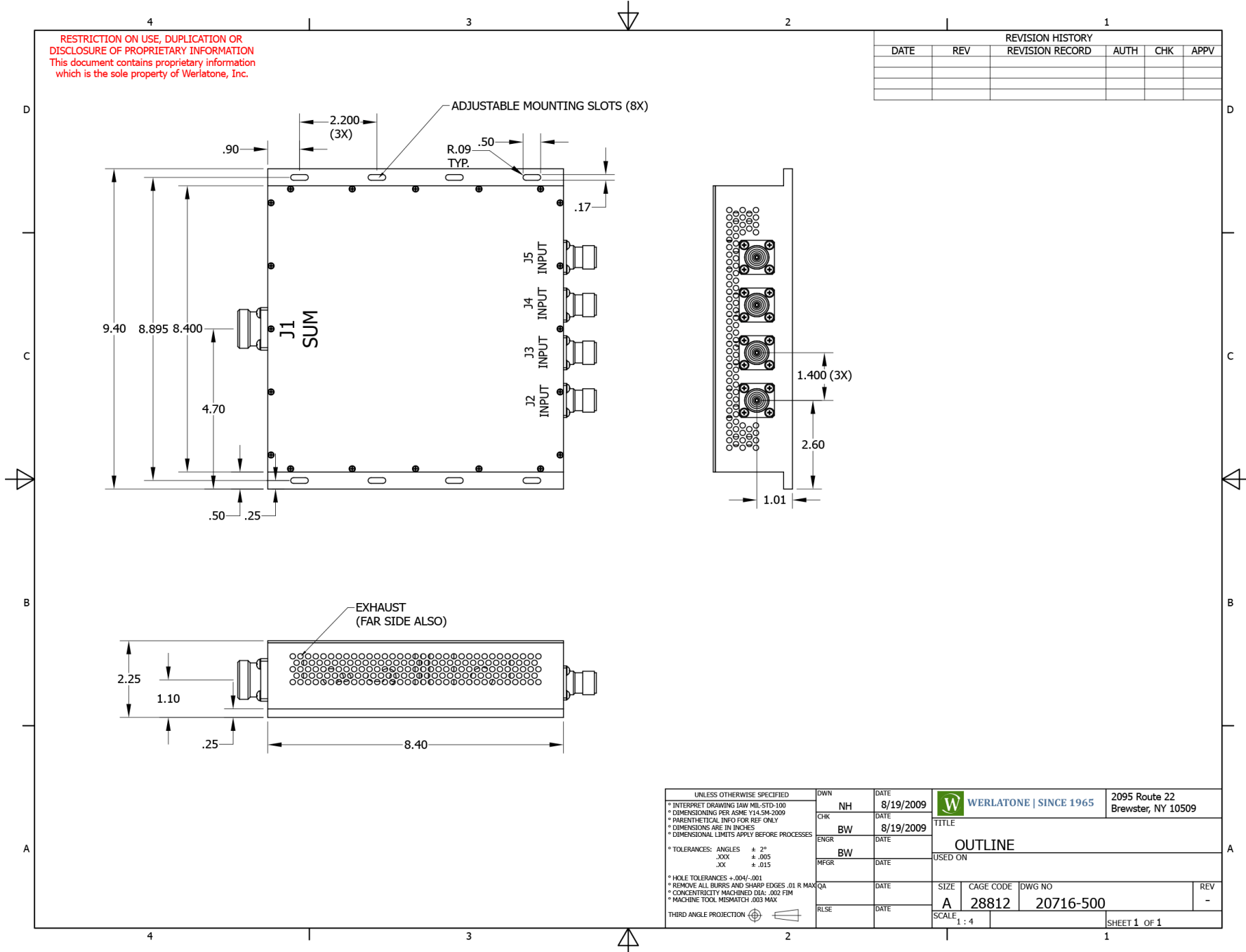
Restriction on use, duplication, or disclosure of proprietary information. This document contains proprietary information which is the sole property of

Werlatone, Inc.

Werlatone, Inc. 17 Jon Barrett Road Patterson, NY 12563 T:(845)278-2220 F:(845)278-3440 sales@werlatone.com www.werlatone.com

RESTRICTION ON USE, DUPLICATION OR DISCLOSURE OF PROPRIETARY INFORMATION  
This document contains proprietary information which is the sole property of Werlatone, Inc.

REVISION HISTORY					
DATE	REV	REVISION RECORD	AUTH	CHK	APPV



UNLESS OTHERWISE SPECIFIED		DWN	DATE	<b>WERLATONE   SINCE 1965</b> 2095 Route 22 Brewster, NY 10509
* INTERPRET DRAWING IAW MIL-STD-100 * DIMENSIONING PER ASME Y14.5M-2009 * PARENTHEICAL INFO FOR REF ONLY * DIMENSIONS ARE IN INCHES * DIMENSIONAL LIMITS APPLY BEFORE PROCESSES		NH	8/19/2009	
* TOLERANCES: ANGLES    # 2° .XXX    # .005 .XX     # .015		CHK	DATE	TITLE
* HOLE TOLERANCES +.004/- .001 * REMOVE ALL BURRS AND SHARP EDGES .01 R MAX * CONCENTRICITY MACHINED DIA: .002 FIM * MACHINE TOOL MISMATCH .003 MAX		BW	8/19/2009	OUTLINE
THIRD ANGLE PROJECTION		ENGR	DATE	USED ON
		BW	DATE	SIZE
		MFR	DATE	A
		QA	DATE	CAGE CODE
		RLSE	DATE	28812
			DATE	DWG NO
			DATE	20716-500
			DATE	SCALE
			DATE	1:4
			DATE	SHEET 1 OF 1
			DATE	REV
			DATE	-

Restriction on use, duplication, or disclosure of proprietary information. This document contains proprietary information which is the sole property of Werlatone, Inc.  
 Werlatone, Inc. 17 Jon Barrett Road Patterson, NY 12563 T:(845)278-2220 F:(845)278-3440 sales@werlatone.com www.werlatone.com