

PRODUCT DATA SHEET

D8544W

Werlatone® Mismatch Tolerant® High Power Broadband RF Combiners and Dividers will operate into High Load VSWR Conditions, for extended periods, without damage. With extensive experience as a supplier to military platforms worldwide **Werlatone®** designs its High Power Broadband Combiners, Power Dividers, and N-Way Combiners for proper operation in the most stringent operating conditions.

Features:

High Power Wide Bandwidths Small Size High Isolation Custom Designs Available

Electrical Specifications:

Frequency: 20 - 1000 MHz
 Power: 100 W CW
 Insertion Loss: 0.5 dB Max.
 VSWR: 1.35:1 Max.
 Phase Balance: $\pm 3^\circ$ Max.
 Amplitude Balance: 0.35 dB Max.
 Isolation: 18 dB Min.

Mechanical Specifications:

Type: Connectorized
 Material: Aluminum 6061-T6
 Surface Finish: Chem. Film Per MIL-DTL-5541F Type I Class 3 (Yellow Iridite) RoHS Compliant Available
 Operating Temperature: -55°C to +75°C
 Storage Temperature: -60°C to +85°C
 Size: 2.85 x 2.5 x 1.0"

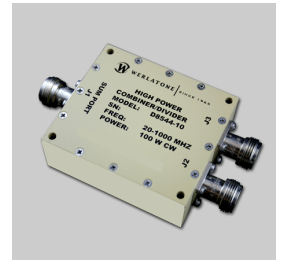
Connector Configurations:

Model	Sum Port (J1)	Input/Output (J2)	Input/Output (J3)
D8544W-10	N Female	N Female	N Female

When specified, Werlatone® High Power Combiners and RF Dividers will tolerate full input failures on adjacent port(s). This insures that remaining transmitter(s) may continue to operate until the amplifier system can be properly shut down for maintenance. Choose your specific connector configuration from a list of options. Additional connector configurations for our High Power RF Combiners/Dividers, Non-Coherent Combiners, and N-Way Combiners are available upon request.

Restriction on use, duplication, or disclosure of proprietary information. This document contains proprietary information which is the sole property of Werlatone, Inc.

Werlatone, Inc. 17 Jon Barrett Road Patterson, NY 12563 T:(845)278-2220 F:(845)278-3440 sales@werlatone.com www.werlatone.com

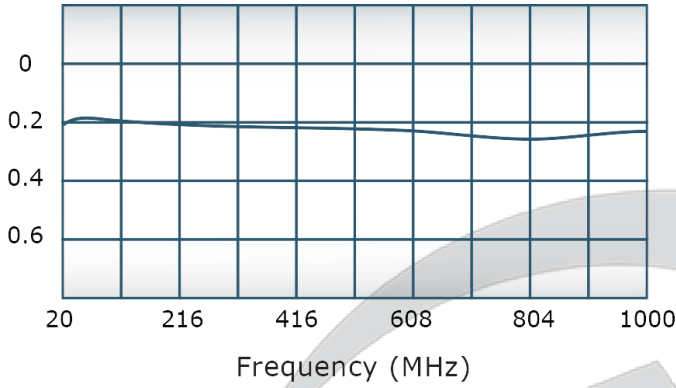


PRODUCT DATA SHEET

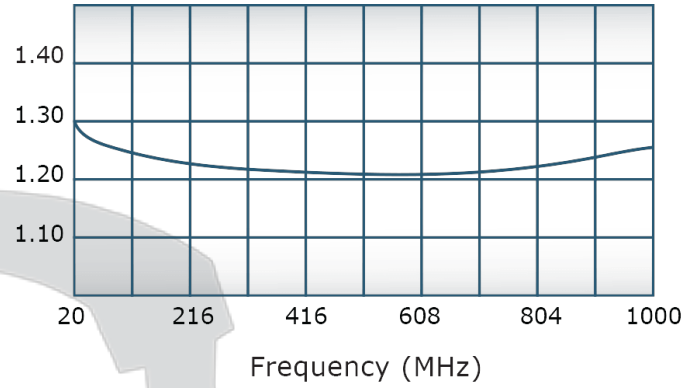
D8544W

Performance Data (Specifications subject to change without notice):

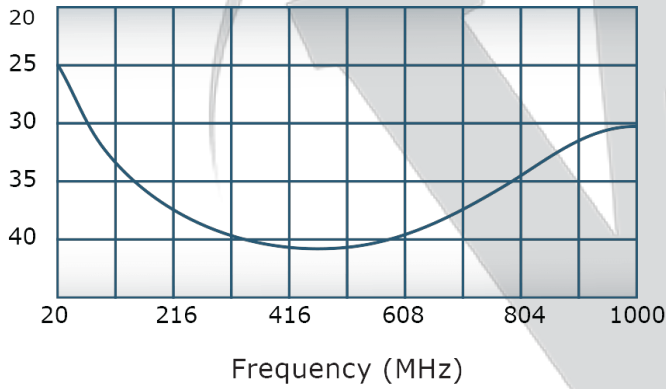
Insertion Loss:



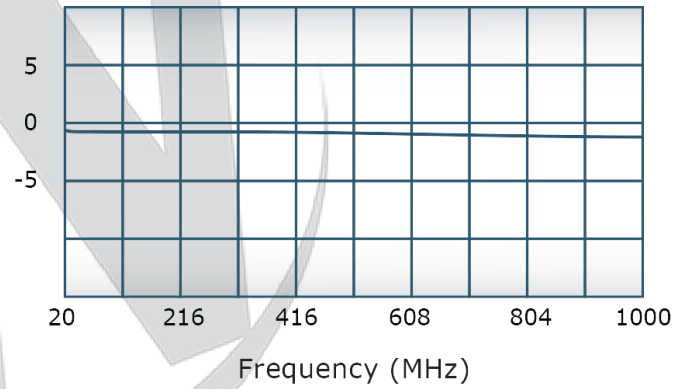
VSWR:



Isolation:



Phase Balance:



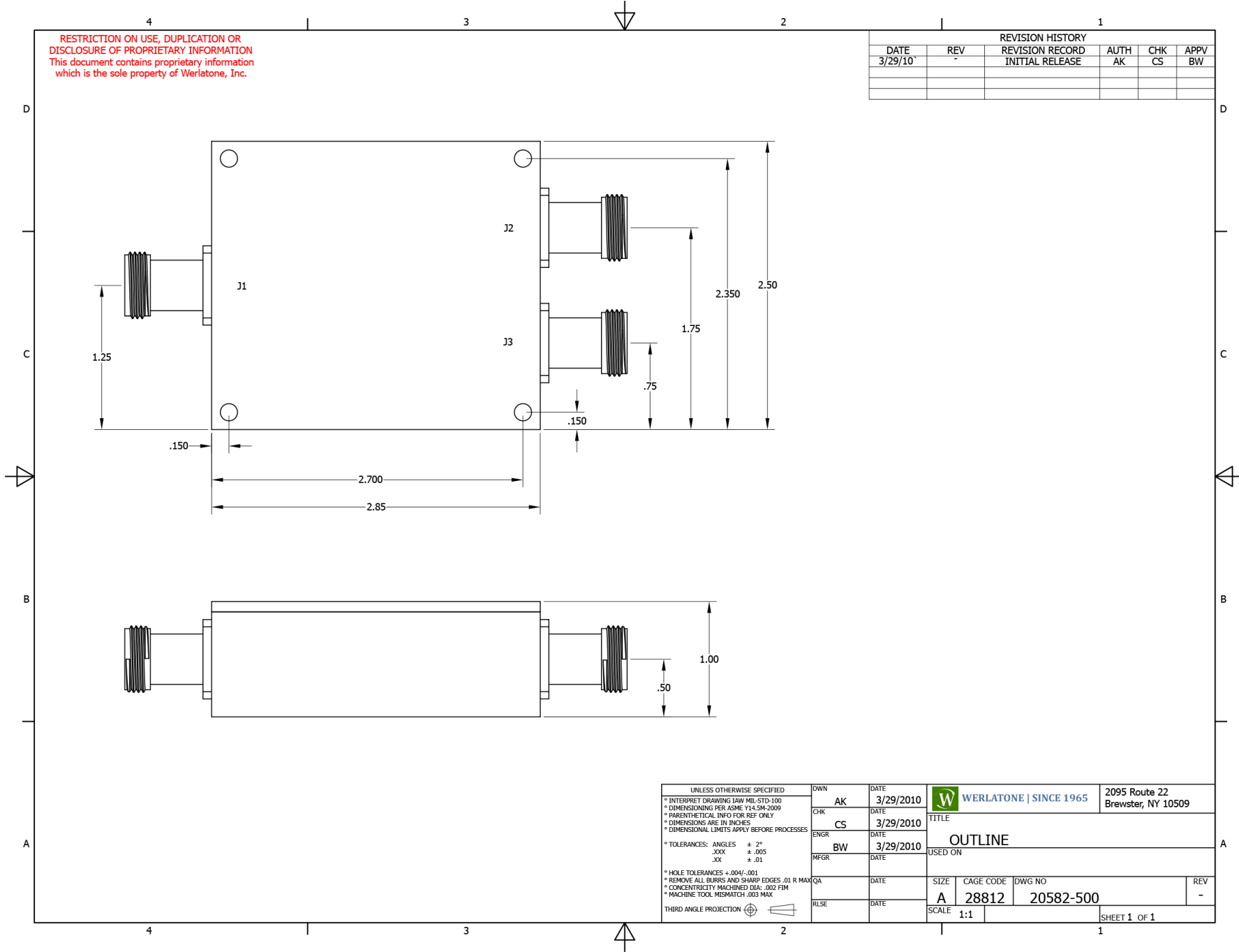
Restriction on use, duplication, or disclosure of proprietary information. This document contains proprietary information which is the sole property of

Werlatone, Inc.

Werlatone, Inc. 17 Jon Barrett Road Patterson, NY 12563 T:(845)278-2220 F:(845)278-3440 sales@werlatone.com www.werlatone.com

RESTRICTION ON USE, DUPLICATION OR DISCLOSURE OF PROPRIETARY INFORMATION
This document contains proprietary information which is the sole property of Werlatone, Inc.

REVISION HISTORY					
DATE	REV	REVISION RECORD	AUTH	CHK	APPV
3/29/10	-	INITIAL RELEASE	AK	CS	BW



UNLESS OTHERWISE SPECIFIED		DWN	DATE	WERLATONE SINCE 1965 2095 Route 22 Brewster, NY 10509
* INTERPRET DRAWING IAW MIL-STD-100 * DIMENSIONING PER ASME Y14.5M-2009 * PARENTHETICAL INFO FOR REF ONLY * DIMENSIONS ARE IN INCHES * DIMENSIONAL LIMITS APPLY BEFORE PROCESSES		AK	3/29/2010	
* TOLERANCES: ANGLES + .2° .XXX + .005 .XX + .01		CHK	DATE	TITLE OUTLINE USED ON
* HOLE TOLERANCES +.004/- .001 * REMOVE ALL BURRS AND SHARP EDGES .01 R MAX * CONCENTRICITY MACHINED DIA: .002 FIM * MACHINE TOOL MISMATCH .003 MAX		CS	3/29/2010	
THIRD ANGLE PROJECTION		ENGR	DATE	SIZE CAGE CODE DWG NO A 28812 20582-500
		BW	3/29/2010	
		MFR	DATE	SCALE 1:1 SHEET 1 OF 1
		QA	DATE	
		RLSE	DATE	REV -

Restriction on use, duplication, or disclosure of proprietary information. This document contains proprietary information which is the sole property of Werlatone, Inc.
 Werlatone, Inc. 17 Jon Barrett Road Patterson, NY 12563 T:(845)278-2220 F:(845)278-3440 sales@werlatone.com www.werlatone.com