



## PRODUCT DATA SHEET

D8422

**Werlatone® Mismatch Tolerant®** High Power Broadband RF Combiners and Dividers will operate into High Load VSWR Conditions, for extended periods, without damage. With extensive experience as a supplier to military platforms worldwide **Werlatone®** designs its High Power Broadband Combiners, Power Dividers, and N-Way Combiners for proper operation in the most stringent operating conditions.

### Features:

High Power      Wide Bandwidths      Small Size      High Isolation      Custom Designs Available

### Electrical Specifications:

Frequency:	800 - 2300 MHz
Power:	800 W CW
Insertion Loss:	0.5 dB Max.
VSWR:	1.25:1 Max.
Phase Balance:	± 5° Max.
Amplitude Balance:	0.25 dB Max.
Isolation:	11 dB Min.

### Mechanical Specifications:

Type:	Connectorized
Material:	Aluminum 6061-T6
Surface Finish:	Chem. Film Per MIL-DTL-5541F Type I Class 3 (Yellow Iridite) RoHS Compliant Available
Operating Temperature:	-55°C to +75°C
Storage Temperature:	-60°C to +85°C
Weight:	3 lbs. 8 oz.
Size:	5.5 x 4.25 x 2.25"

### Connector Configurations:

Model	Sum Port (J1)	Input/Output (J2-J5)
D8422-10	N Female	N Female
D8422-20	7/16 Female	N Female
D8422-22	7/16 Female	SMA
D8422-296	7/16 Female	SC Female

**When specified, Werlatone® High Power Combiners and RF Dividers** will tolerate full input failures on adjacent port(s). This insures that remaining transmitter(s) may continue to operate until the amplifier system can be properly shut down for maintenance. Choose your specific connector configuration from a list of options. Additional connector configurations for our High Power RF Combiners/Dividers, Non-Coherent Combiners, and N-Way Combiners are available upon request.

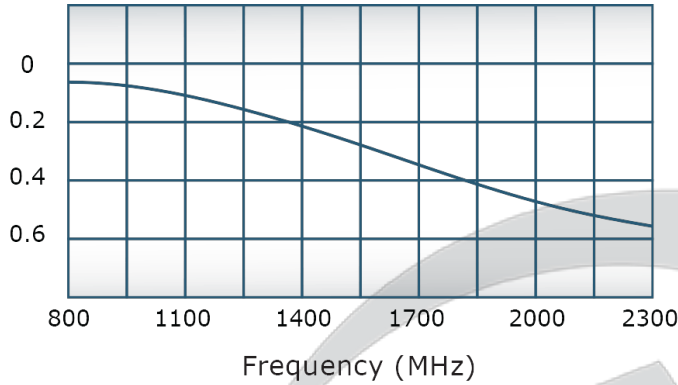
**Restriction on use, duplication, or disclosure of proprietary information.** This document contains proprietary information which is the sole property of Werlatone, Inc.

Werlatone, Inc. 17 Jon Barrett Road Patterson, NY 12563 T:(845)278-2220 F:(845)278-3440 sales@werlatone.com www.werlatone.com

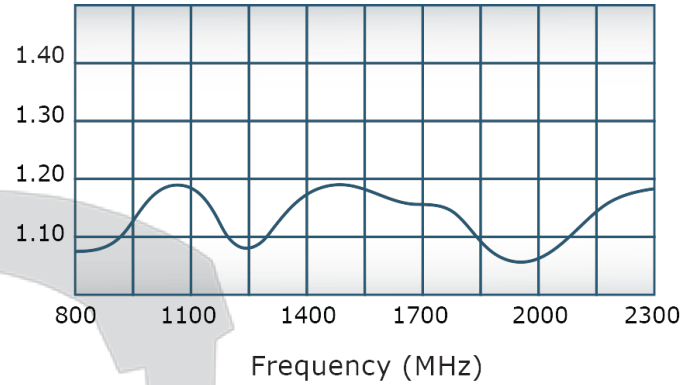


## Performance Data (Specifications subject to change without notice):

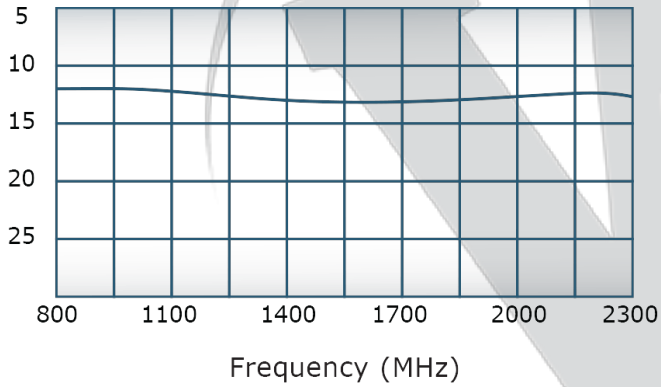
Insertion Loss:



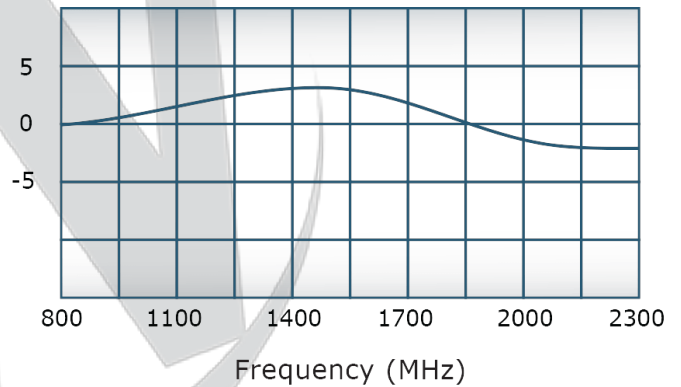
VSWR:



Isolation:



Phase Balance:



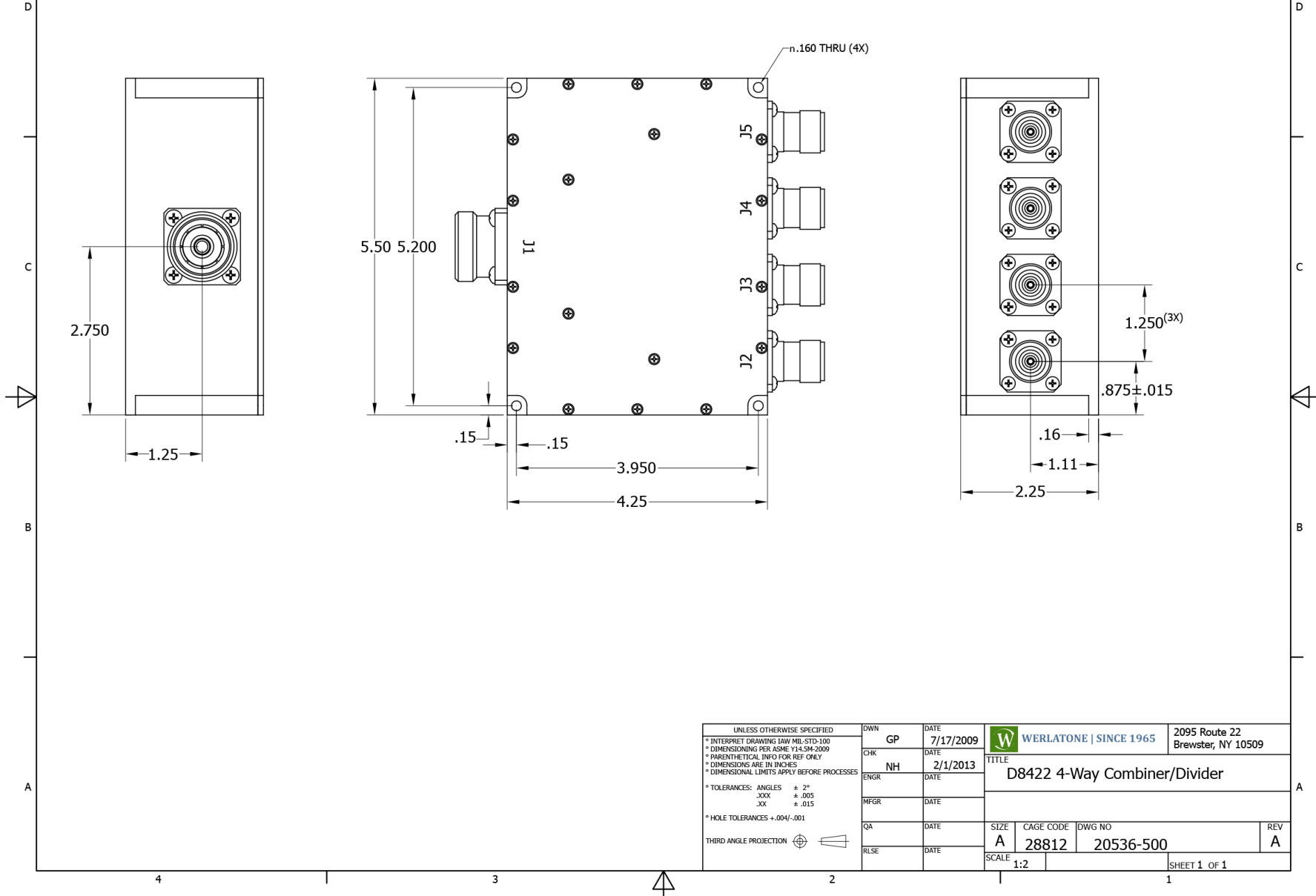
Restriction on use, duplication, or disclosure of proprietary information. This document contains proprietary information which is the sole property of

Werlatone, Inc.

Werlatone, Inc. 17 Jon Barrett Road Patterson, NY 12563 T:(845)278-2220 F:(845)278-3440 sales@werlatone.com www.werlatone.com

RESTRICTION ON USE, DUPLICATION OR DISCLOSURE OF PROPRIETARY INFORMATION  
This document contains proprietary information which is the sole property of Werlatone, Inc.

REVISION HISTORY					
DATE	REV	REVISION RECORD	AUTH	CHK	APPV
7/16/09	-	INITIAL RELEASE	GP	NH	BW
10/1/09	A	ECN 4970	GP	NH	BW



UNLESS OTHERWISE SPECIFIED  
 \* INTERPRET DRAWING IAW MIL-STD-100  
 \* DIMENSIONING PER ASME Y14.5M-2009  
 \* PARENTHEICAL INFO FOR REF ONLY  
 \* DIMENSIONS ARE IN INCHES  
 \* DIMENSIONAL LIMITS APPLY BEFORE PROCESSES  
 \* TOLERANCES: ANGLES ± 2°  
 .XXX ± .005  
 .XX ± .015  
 \* HOLE TOLERANCES ±.004/- .001  
 THIRD ANGLE PROJECTION

DWN	GP	DATE	7/17/2009
CHK	NH	DATE	2/1/2013
ENGR		DATE	
MFR		DATE	
QA		DATE	
RLSE		DATE	

<b>WERLATONE   SINCE 1965</b>		2095 Route 22 Brewster, NY 10509	
TITLE <b>D8422 4-Way Combiner/Divider</b>			
SIZE	CAGE CODE	DWG NO	REV
A	28812	20536-500	A
SCALE	1:2		SHEET 1 OF 1

Restriction on use, duplication, or disclosure of proprietary information. This document contains proprietary information which is the sole property of Werlatone, Inc.  
 Werlatone, Inc. 17 Jon Barrett Road Patterson, NY 12563 T:(845)278-2220 F:(845)278-3440 sales@werlatone.com www.werlatone.com