
**PRODUCT DATA SHEET**
**D8339**

**Werlatone® Mismatch Tolerant®** High Power Broadband RF Combiners and Dividers will operate into High Load VSWR Conditions, for extended periods, without damage. With extensive experience as a supplier to military platforms worldwide **Werlatone®** designs its High Power Broadband Combiners, Power Dividers, and N-Way Combiners for proper operation in the most stringent operating conditions.

**Features:**

High Power      Wide Bandwidths      Small Size      High Isolation      Custom Designs Available

**Electrical Specifications:**

Frequency:                      20 - 2000 MHz  
 Power:                              5 W CW  
 Insertion Loss:                1.2 dB Max.  
 VSWR:                              1.70:1 Max.  
 Phase Balance:                ± 5° Max.  
 Amplitude Balance:         0.3 dB Max.  
 Isolation:                         15 dB Min.

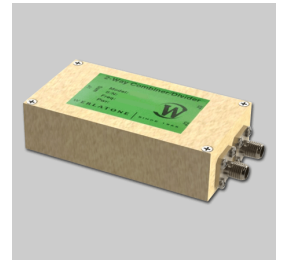
**Mechanical Specifications:**

Type:                                Connectorized  
 Material:                         Aluminum 6061-T6  
 Surface Finish:                Chem. Film Per MIL-DTL-5541F Type I Class 3 (Yellow Iridite) RoHS Compliant Available  
 Operating Temperature:     -55°C to +75°C  
 Storage Temperature:       -60°C to +85°C  
 Size:                                 3.0 x 1.6 x 0.8"

**Connector Configurations:**

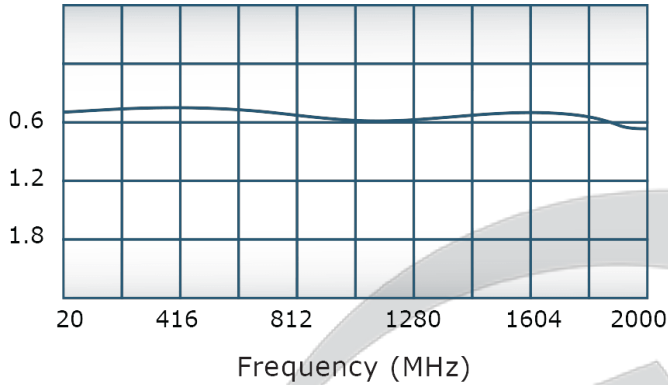
Model	Sum Port (J1)	Input/Output (J2)	Input/Output (J3)
D8339-102	SMA	SMA	SMA

**When specified, Werlatone® High Power Combiners and RF Dividers** will tolerate full input failures on adjacent port(s). This insures that remaining transmitter(s) may continue to operate until the amplifier system can be properly shut down for maintenance. Choose your specific connector configuration from a list of options. Additional connector configurations for our High Power RF Combiners/Dividers, Non-Coherent Combiners, and N-Way Combiners are available upon request.

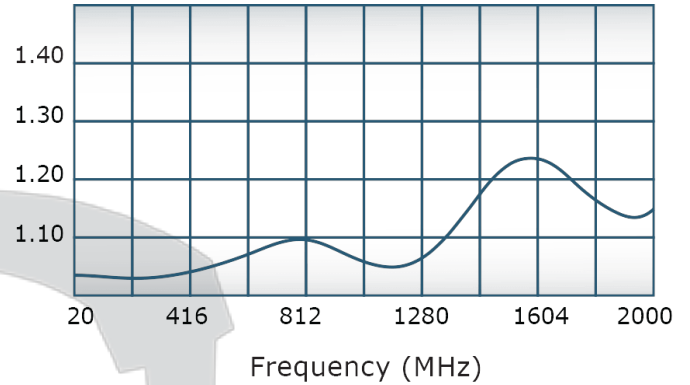


## Performance Data (Specifications subject to change without notice):

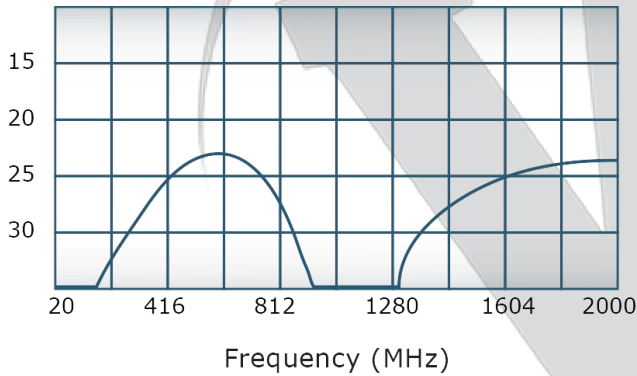
Insertion Loss:



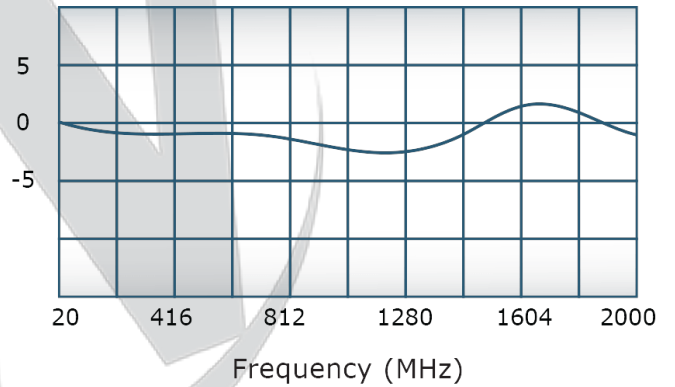
VSWR:



Isolation:



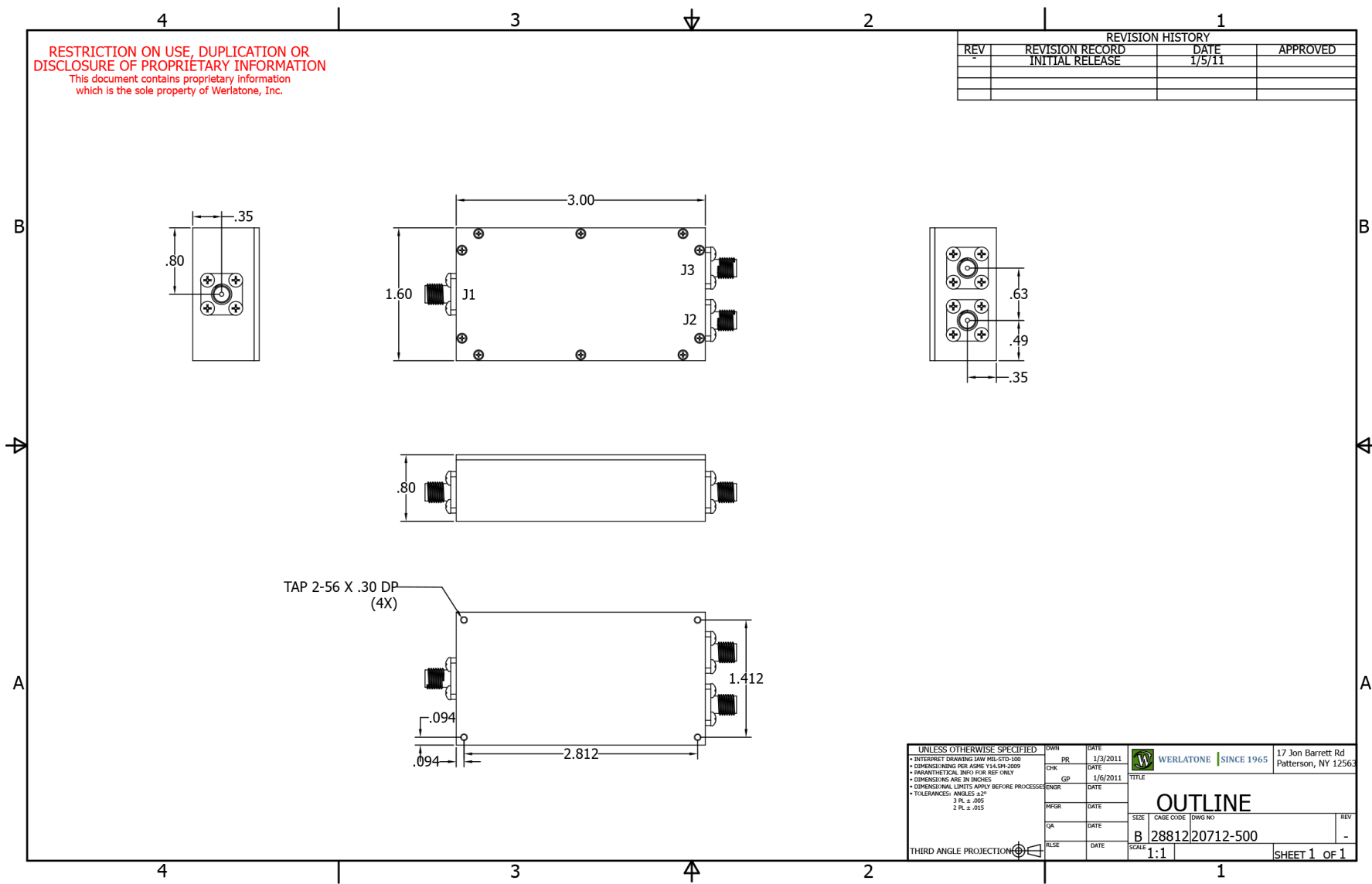
Phase Balance:



Restriction on use, duplication, or disclosure of proprietary information. This document contains proprietary information which is the sole property of

Werlatone, Inc.

Werlatone, Inc. 17 Jon Barrett Road Patterson, NY 12563 T:(845)278-2220 F:(845)278-3440 sales@werlatone.com www.werlatone.com



**RESTRICTION ON USE, DUPLICATION OR DISCLOSURE OF PROPRIETARY INFORMATION**  
 This document contains proprietary information which is the sole property of Werlatone, Inc.

REVISION HISTORY			
REV	REVISION RECORD	DATE	APPROVED
	INITIAL RELEASE	1/5/11	

UNLESS OTHERWISE SPECIFIED		OWN	DATE	<b>WERLATONE</b>   SINCE 1965 17 Jon Barrett Rd Patterson, NY 12563
<ul style="list-style-type: none"> <li>• INTERPRET DRAWING IAW MIL-STD-100</li> <li>• DIMENSIONING PER ASME Y14.5M-2009</li> <li>• DIMENSIONAL LIMITS APPLY BEFORE PROCESSING</li> <li>• DIMENSIONS ARE IN INCHES</li> <li>• TOLERANCES: ANGLES ±2°</li> <li>3 PL. ± .005</li> <li>2 PL. ± .015</li> </ul>		PR	1/3/2011	
THIRD ANGLE PROJECTION		CHK	DATE	<b>OUTLINE</b> SIZE CAGE CODE DWG NO <b>B 28812 20712-500</b>
		CP	1/6/2011	
		ENGR	DATE	REV
		MFR	DATE	-
		QA	DATE	
		RLSE	DATE	
		SCALE	1:1	SHEET 1 OF 1

**Restriction on use, duplication, or disclosure of proprietary information.** This document contains proprietary information which is the sole property of Werlatone, Inc.  
 Werlatone, Inc. 17 Jon Barrett Road Patterson, NY 12563 T:(845)278-2220 F:(845)278-3440 sales@werlatone.com www.werlatone.com