



PRODUCT DATA SHEET

D7587

Werlatone® Mismatch Tolerant® High Power Broadband RF Combiners and Dividers will operate into High Load VSWR Conditions, for extended periods, without damage. With extensive experience as a supplier to military platforms worldwide **Werlatone®** designs its High Power Broadband Combiners, Power Dividers, and N-Way Combiners for proper operation in the most stringent operating conditions.

Features:

High Power Wide Bandwidths Small Size High Isolation Custom Designs Available

Electrical Specifications:

Frequency:	20 - 500 MHz
Power:	100 W CW
Insertion Loss:	0.5 dB Max.
VSWR:	1.30:1 Max.
Phase Balance:	± 5° Max.
Amplitude Balance:	0.2 dB Max.
Isolation:	20 dB Min.

Mechanical Specifications:

Type:	Connectorized
Material:	Aluminum 6061-T6
Surface Finish:	Chem. Film Per MIL-DTL-5541F Type I Class 3 (Yellow Iridite) RoHS Compliant Available
Operating Temperature:	-55°C to +75°C
Storage Temperature:	-60°C to +85°C
Weight:	13.5 oz.
Size:	5.09 x 2.3 x 1.0"

Connector Configurations:

Model	Sum Port (J5)	Input/Output (J1-J4)
D7587-12	N Female	SMA
D7587-102	SMA	SMA
D7587-102STS	Stainless Steel SMA	Stainless Steel SMA
D7587-113	BNC	BNC
D7587-300	TNC	TNC

When specified, Werlatone® High Power Combiners and RF Dividers will tolerate full input failures on adjacent port(s). This insures that remaining transmitter(s) may continue to operate until the amplifier system can be properly shut down for maintenance. Choose your specific connector configuration from a list of options. Additional connector configurations for our High Power RF Combiners/Dividers, Non-Coherent Combiners, and N-Way Combiners are available upon request.

Restriction on use, duplication, or disclosure of proprietary information. This document contains proprietary information which is the sole property of Werlatone, Inc.

Werlatone, Inc. 17 Jon Barrett Road Patterson, NY 12563 T:(845)278-2220 F:(845)278-3440 sales@werlatone.com www.werlatone.com

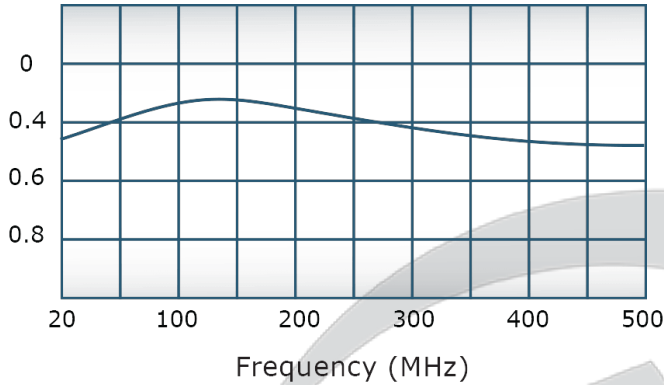


PRODUCT DATA SHEET

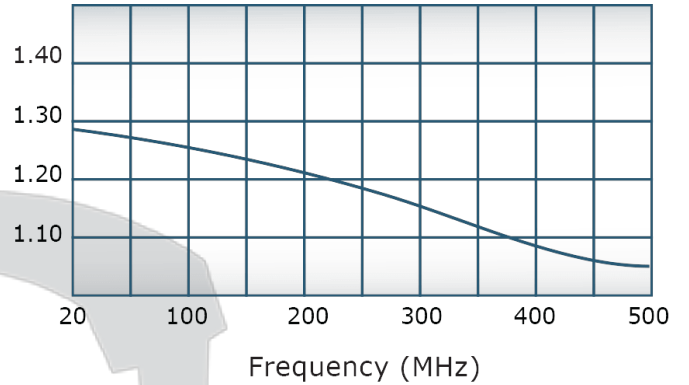
D7587

Performance Data (Specifications subject to change without notice):

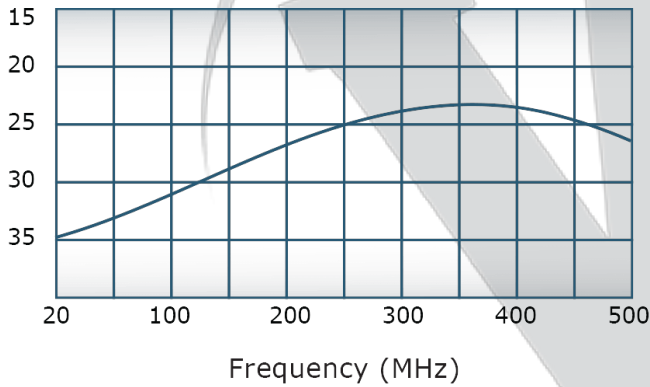
Insertion Loss:



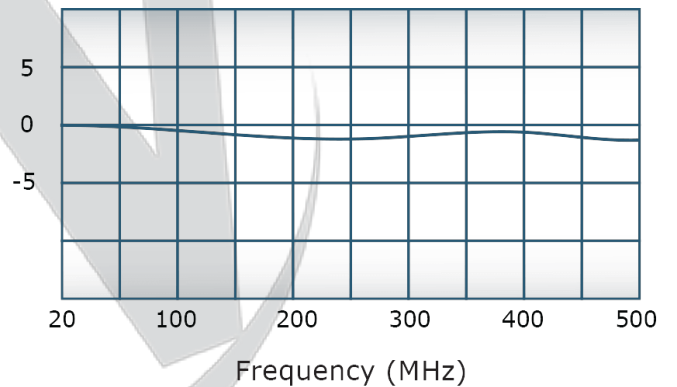
VSWR:



Isolation:



Phase Balance:



Restriction on use, duplication, or disclosure of proprietary information. This document contains proprietary information which is the sole property of

Werlatone, Inc.

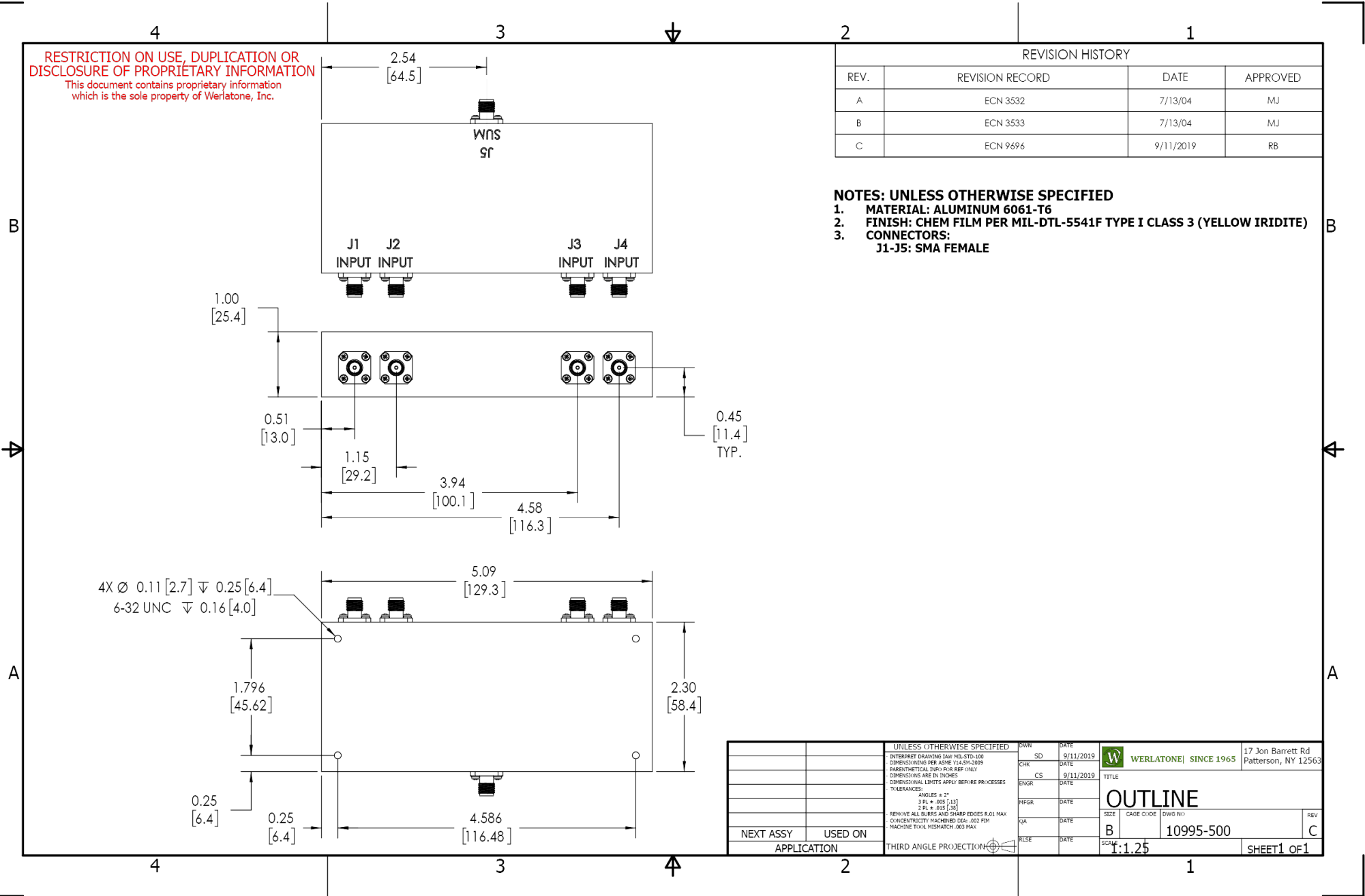
Werlatone, Inc. 17 Jon Barrett Road Patterson, NY 12563 T:(845)278-2220 F:(845)278-3440 sales@werlatone.com www.werlatone.com

RESTRICTION ON USE, DUPLICATION OR DISCLOSURE OF PROPRIETARY INFORMATION
 This document contains proprietary information which is the sole property of Werlatone, Inc.

REVISION HISTORY			
REV.	REVISION RECORD	DATE	APPROVED
A	ECN 3532	7/13/04	MJ
B	ECN 3533	7/13/04	MJ
C	ECN 9696	9/11/2019	RB

NOTES: UNLESS OTHERWISE SPECIFIED

- MATERIAL: ALUMINUM 6061-T6**
- FINISH: CHEM FILM PER MIL-DTL-5541F TYPE I CLASS 3 (YELLOW IRIDITE)**
- CONNECTORS:
J1-J5: SMA FEMALE**



UNLESS OTHERWISE SPECIFIED		OWN	DATE	17 Jon Barrett Rd Patterson, NY 12563	
INTERPRET DRAWING IAW MIL-STD-100	SD	9/11/2019	WERLATONE SINCE 1965		
DIMENSIONS PER ASME Y14.5M-2009	CHK	DATE			
PARENTHEetical INFO FOR REF ONLY	CS	9/11/2019			
DIMENSIONS ARE IN INCHES	ENGR	DATE			
DIMENSIONAL LIMITS APPLY BEFORE FINISHES	INFR	DATE	OUTLINE TITLE SIZE CAGE CODE DWG NO B 10995-500		
TOLERANCES:	QA	DATE			
ANGLES = 2°	RLSE	DATE			
3 PL ± .005 (.13)					
2 PL ± .015 (.38)			SCAF: 1:1.25		
REMOVE ALL BURRS AND SHARP EDGES R.01 MAX			REV C		
CONCENTRICITY MACHINED DIA: .002 FIM			SHEET 1 OF 1		
MACHINE TOOL MISMATCH .003 FIM					
THIRD ANGLE PROJECTION					

Restriction on use, duplication, or disclosure of proprietary information. This document contains proprietary information which is the sole property of Werlatone, Inc.
 Werlatone, Inc. 17 Jon Barrett Road Patterson, NY 12563 T:(845)278-2220 F:(845)278-3440 sales@werlatone.com www.werlatone.com