



## PRODUCT DATA SHEET

**D11149**

**Werlatone® Mismatch Tolerant®** High Power Broadband RF Combiners and Dividers will operate into High Load VSWR Conditions, for extended periods, without damage. With extensive experience as a supplier to military platforms worldwide **Werlatone®** designs its High Power Broadband Combiners, Power Dividers, and N-Way Combiners for proper operation in the most stringent operating conditions.

### Features:

High Power      Wide Bandwidths      Small Size      Custom Designs Available

### Electrical Specifications:

Frequency: 700 - 6000 MHz  
Power: 300 W CW  
Insertion Loss: 0.6 dB Max.  
VSWR: 1.40:1 Max. (1000-6000 MHz)  
1.75:1 Max. (700-1000 MHz)  
Phase Balance:  $\pm 5^\circ$  Max.  
Amplitude Balance: 0.3 dB Max.  
Isolation: Non-Isolated

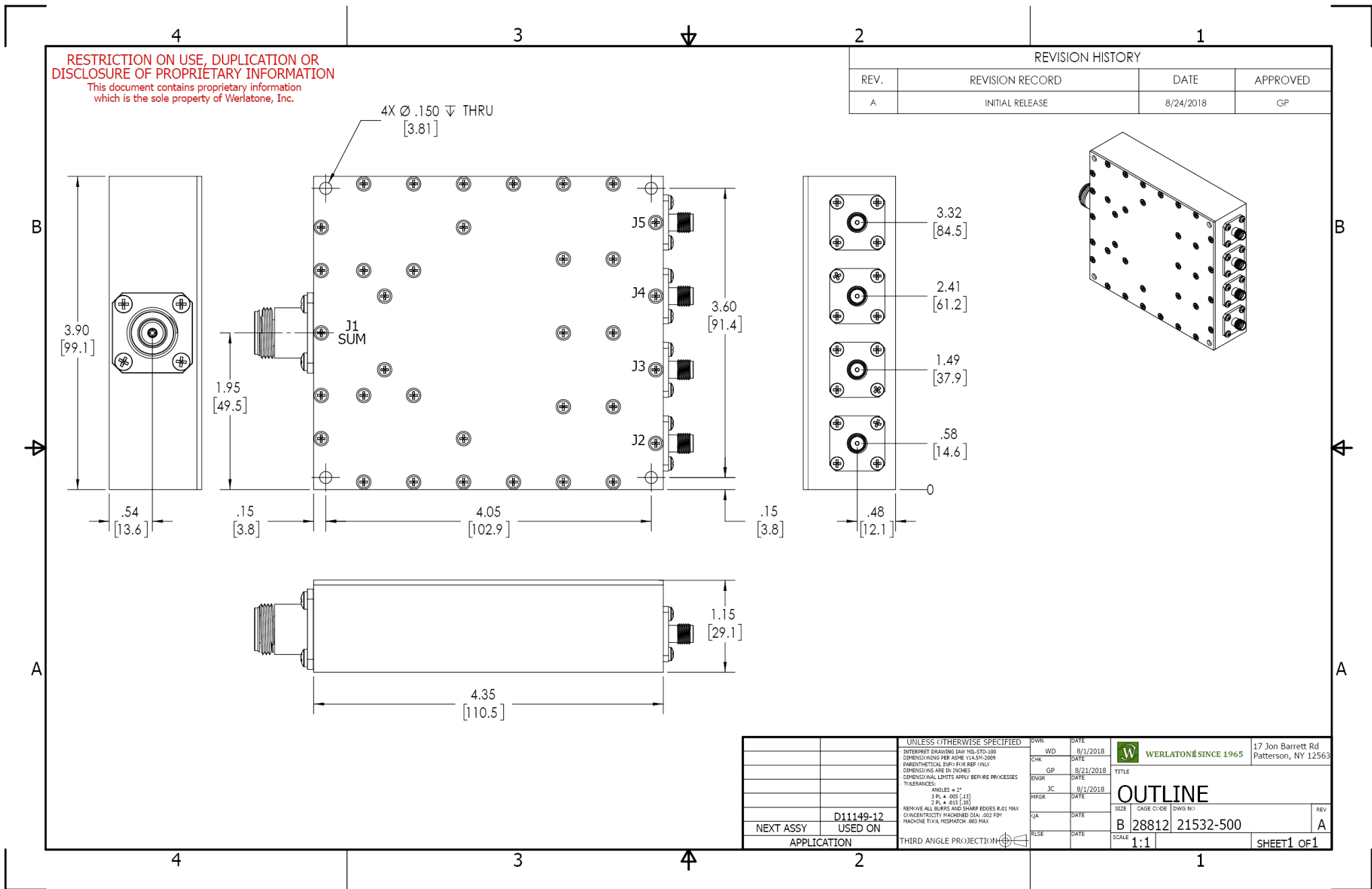
### Mechanical Specifications:

Type: Connectorized  
Material: Aluminum 6061-T6  
Surface Finish: ASTM B733 TY IV .0002/.0004 EN AMS-QQ-N290 CL 1 .0002/.0004 RoHS Compliant Available  
Operating Temperature: -55°C to +75°C  
Storage Temperature: -60°C to +85°C  
Size: 4.35 x 3.9 x 1.15"

### Connector Configurations:

Model	Sum Port (J1)	Inputs/Outputs (J2-J5)
D11149-10	N Female	N Female
D11149-12	N Female	SMA

**When specified, Werlatone® High Power Combiners and RF Dividers** will tolerate full input failures on adjacent port(s). This insures that remaining transmitter(s) may continue to operate until the amplifier system can be properly shut down for maintenance. Choose your specific connector configuration from a list of options. Additional connector configurations for our High Power RF Combiners/Dividers, Non-Coherent Combiners, and N-Way Combiners are available upon request.



Restriction on use, duplication, or disclosure of proprietary information. This document contains proprietary information which is the sole property of Werlatone, Inc.  
 Werlatone, Inc. 17 Jon Barrett Road Patterson, NY 12563 T:(845)278-2220 F:(845)278-3440 sales@werlatone.com www.werlatone.com