


PRODUCT DATA SHEET
D10854

Werlatone® Mismatch Tolerant® High Power Broadband RF Combiners and Dividers will operate into High Load VSWR Conditions, for extended periods, without damage. With extensive experience as a supplier to military platforms worldwide **Werlatone®** designs its High Power Broadband Combiners, Power Dividers, and N-Way Combiners for proper operation in the most stringent operating conditions.

Features:

High Power Wide Bandwidths Small Size High Isolation Custom Designs Available

Electrical Specifications:

Frequency: 200 - 1000 MHz
 Power: 1200 W CW
 Insertion Loss: 0.65 dB Max.
 VSWR: 1.35:1 Max.
 Phase Balance: ± 5° Max.
 Amplitude Balance: 0.3 dB Max.
 Isolation: 15 dB Min.

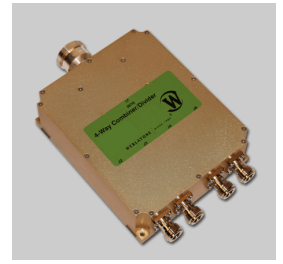
Mechanical Specifications:

Type: Connectorized
 Material: Aluminum 6061-T6
 Surface Finish: Chem. Film Per MIL-DTL-5541F Type I Class 3 (Yellow Iridite) RoHS Compliant Available
 Operating Temperature: -55°C to +75°C
 Storage Temperature: -60°C to +85°C
 Weight: 4.0 lbs.
 Size: 5.7 x 4.7 x 1.75"

Connector Configurations:

Model	Sum Port (J1)	Input/Output (J2-J5)
D10854-10	N Female	N Female
D10854-20	7/16 Female	N Female
D10854-22	7/16 Female	SMA
D10854-41	SC Female	N Female

When specified, Werlatone® High Power Combiners and RF Dividers will tolerate full input failures on adjacent port(s). This insures that remaining transmitter(s) may continue to operate until the amplifier system can be properly shut down for maintenance. Choose your specific connector configuration from a list of options. Additional connector configurations for our High Power RF Combiners/Dividers, Non-Coherent Combiners, and N-Way Combiners are available upon request.

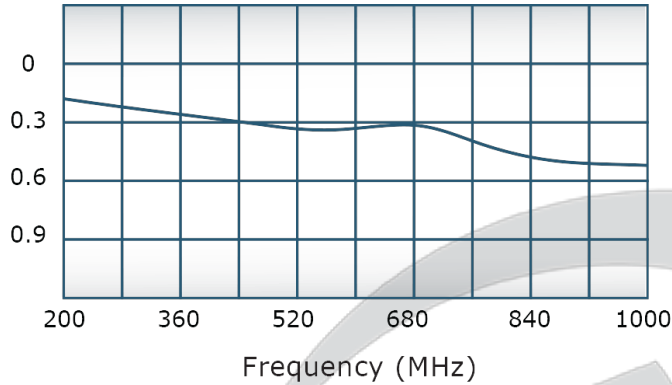


PRODUCT DATA SHEET

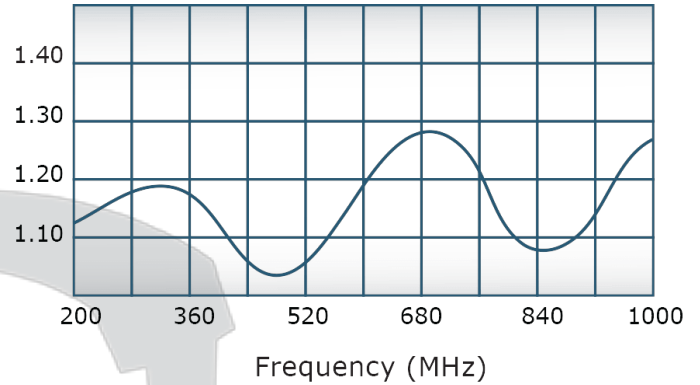
D10854

Performance Data (Specifications subject to change without notice):

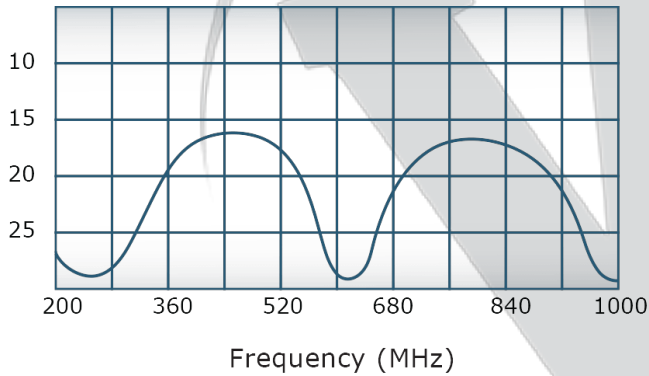
Insertion Loss:



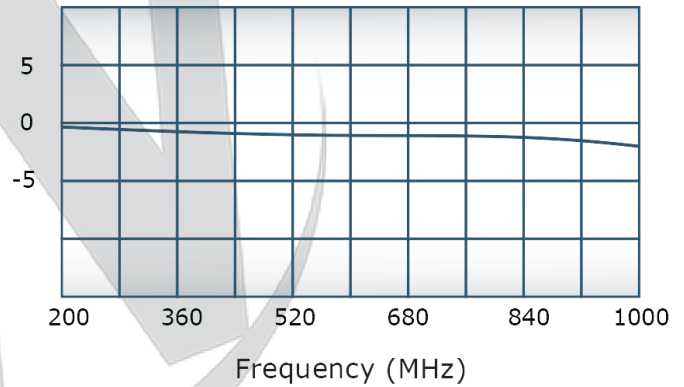
VSWR:



Isolation:



Phase Balance:



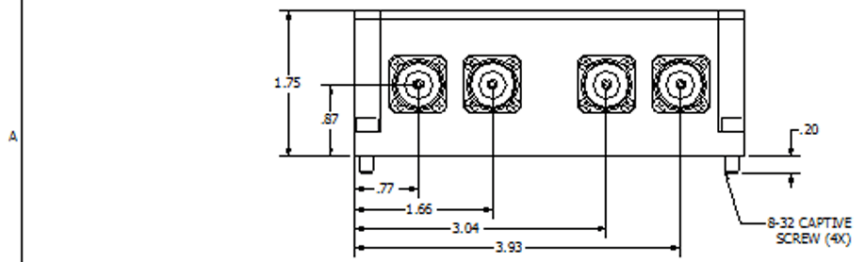
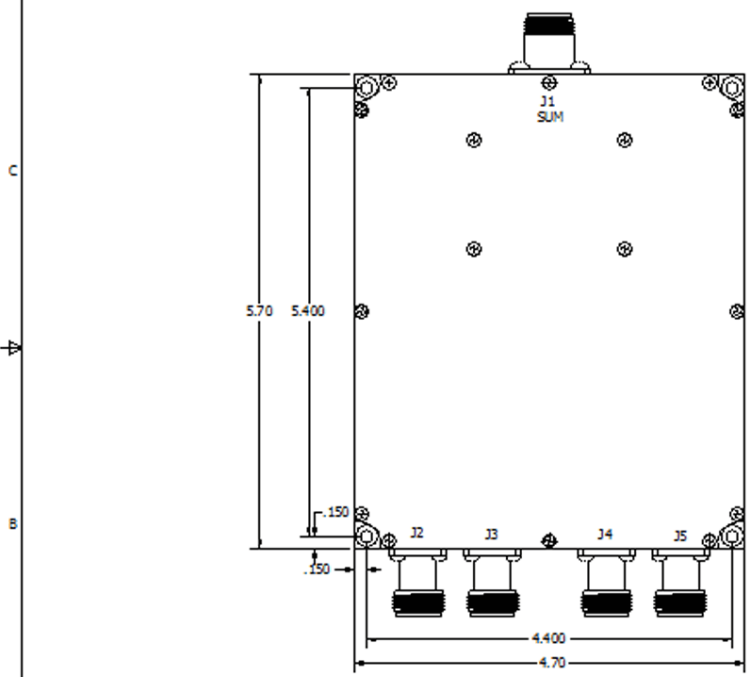
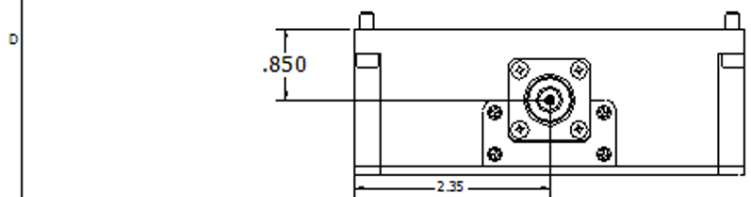
Restriction on use, duplication, or disclosure of proprietary information. This document contains proprietary information which is the sole property of

Werlatone, Inc.

Werlatone, Inc. 17 Jon Barrett Road Patterson, NY 12563 T:(845)278-2220 F:(845)278-3440 sales@werlatone.com www.werlatone.com

RESTRICTION ON USE, DUPLICATION OR DISCLOSURE OF PROPRIETARY INFORMATION
This document contains proprietary information which is the sole property of Werlatone, Inc.

REVISION HISTORY					
DATE	REV	REVISION RECORD	AUTH	CHK	APPV
7/28/11	-	INITIAL RELEASE	PR		
5/28/13	A	8198	PR		
12/14/18	B	9718	PK		



UNLESS OTHERWISE SPECIFIED

- * INTERIOR OF DRAWING SHOWN UNLESS NOTED
- * DIMENSIONS PER ASME Y14.5M-2009
- * PRACTICAL TOLERANCES ONLY
- * DIMENSIONS ARE IN INCHES
- * DIMENSIONAL LIMITS APPLY BEFORE PROCESSES

* TOLERANCES

ANGLES	± .1°
XXX	± .005
XXX	± .015

- * HOLE TOLERANCES = DIA ± .001
- * REMOVE ALL BURS AND SHARP EDGES: 0.1 R MAX
- * CONFORM TO MACHINED DIM: 0.05 FDI
- * MACHINE TOOL VARIATION: 0.02 MAX

THIRD ANGLE PROJECTION

DATE	7/28/2011	WERLATONE SINCE 1965	17 Jon Barrett Rd Patterson, NY 12563
PR		D9075	
DATE		C 28812 20788-500	
DATE		SCALE	1:1
DATE		SHEET 1 OF 1	

Restriction on use, duplication, or disclosure of proprietary information. This document contains proprietary information which is the sole property of Werlatone, Inc.
Werlatone, Inc. 17 Jon Barrett Road Patterson, NY 12563 T:(845)278-2220 F:(845)278-3440 sales@werlatone.com www.werlatone.com