
PRODUCT DATA SHEET
D10533

Werlatone® Mismatch Tolerant® High Power Broadband RF Combiners and Dividers will operate into High Load VSWR Conditions, for extended periods, without damage. With extensive experience as a supplier to military platforms worldwide **Werlatone®** designs its High Power Broadband Combiners, Power Dividers, and N-Way Combiners for proper operation in the most stringent operating conditions.

Features:

High Power Wide Bandwidths Small Size High Isolation Custom Designs Available

Electrical Specifications:

Frequency: 800 - 2000 MHz
 Power: 300 W CW
 Insertion Loss: 0.45 dB Max.
 VSWR: 1.35:1 Max.
 Phase Balance: ± 5° Max.
 Amplitude Balance: 0.3 dB Max.
 Isolation: 16 dB Min.

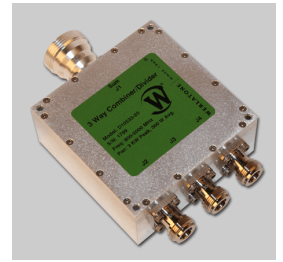
Mechanical Specifications:

Type: Connectorized
 Material: Aluminum 6061-T6
 Surface Finish: Chem. Film Per MIL-DTL-5541F Type I Class 3 (Clear Iridite) RoHS Compliant Available
 Operating Temperature: -55°C to +75°C
 Storage Temperature: -60°C to +85°C
 Size: 3.5 x 3.5 x 1.5"

Connector Configurations:

Model	Sum Port (J1)	Input/Output (J2-J4)
D10533-20	7/16 Female	N Female

When specified, Werlatone® High Power Combiners and RF Dividers will tolerate full input failures on adjacent port(s). This insures that remaining transmitter(s) may continue to operate until the amplifier system can be properly shut down for maintenance. Choose your specific connector configuration from a list of options. Additional connector configurations for our High Power RF Combiners/Dividers, Non-Coherent Combiners, and N-Way Combiners are available upon request.

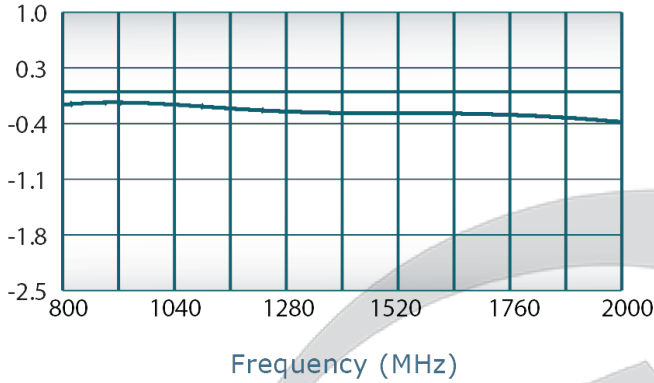


PRODUCT DATA SHEET

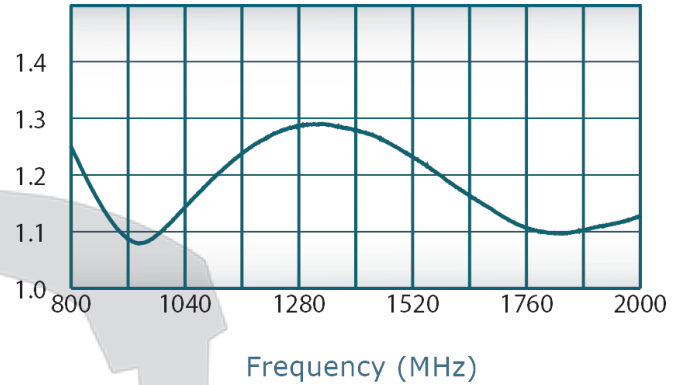
D10533

Performance Data (Specifications subject to change without notice):

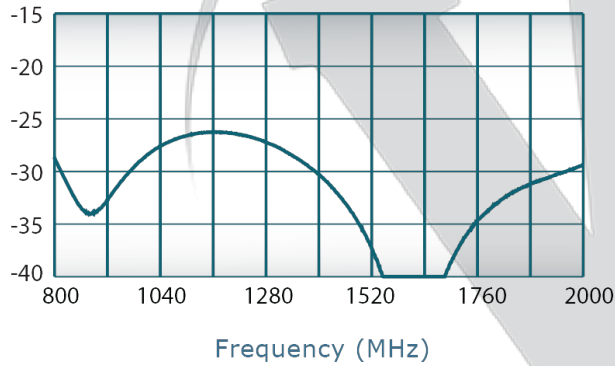
Insertion Loss:



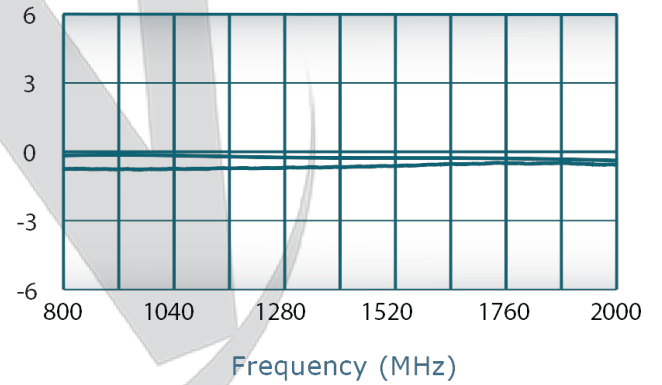
VSWR:



Isolation:



Phase Balance:



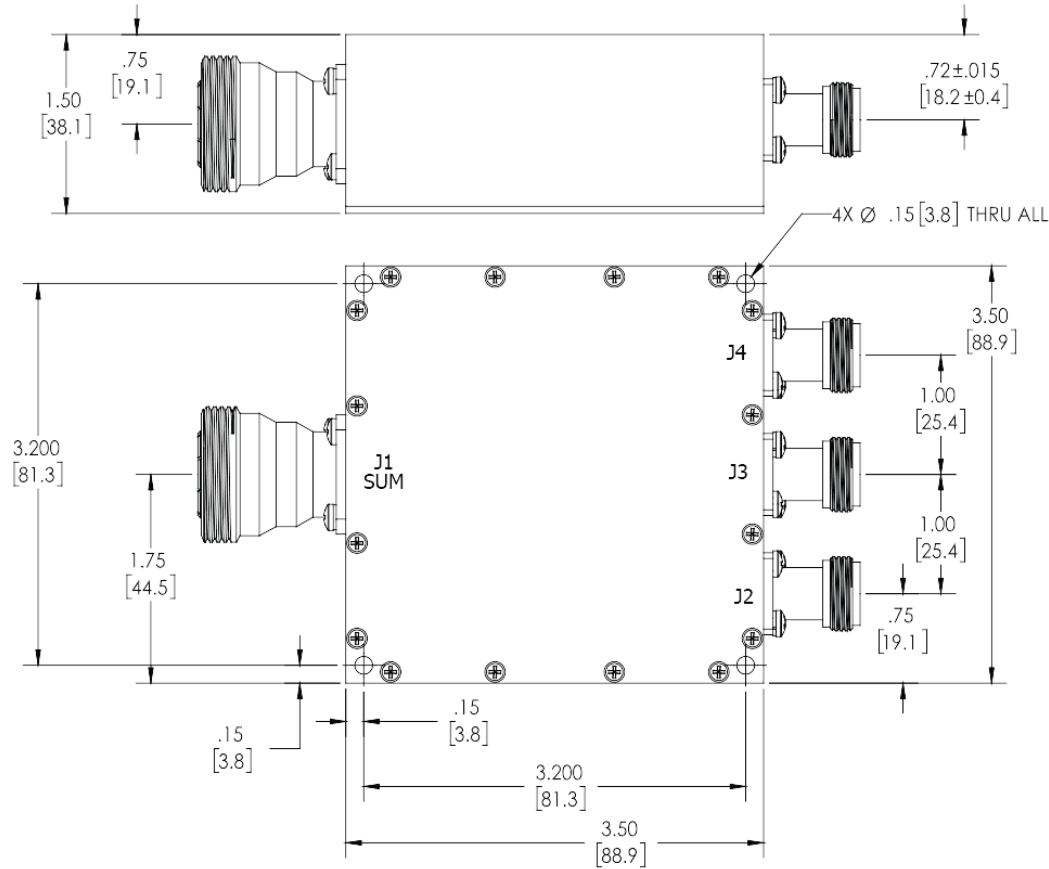
Restriction on use, duplication, or disclosure of proprietary information. This document contains proprietary information which is the sole property of

Werlatone, Inc.

Werlatone, Inc. 17 Jon Barrett Road Patterson, NY 12563 T:(845)278-2220 F:(845)278-3440 sales@werlatone.com www.werlatone.com

RESTRICTION ON USE, DUPLICATION OR DISCLOSURE OF PROPRIETARY INFORMATION
 This document contains proprietary information which is the sole property of Werlatone, Inc.

REVISION HISTORY			
REV.	REVISION RECORD	DATE	APPROVED
-	INITIAL-RELEASE	3/11/2019	BW



NOTES: UNLESS OTHERWISE SPECIFIED

- MAT'L: ALUMINUM 6061-T6**
- FINISH: CHEM FILM PER MIL-DTL-5541F TYPE II CLASS 3 (CLEAR/TRIVALENT)**
- CONNECTORS:**
 J1: 7-16 DIN (F)
 J2-J4: N(F)

UNLESS OTHERWISE SPECIFIED		DATE	10/20/2015	WERLATONE SINCE 1965 17 Jon Barrett Rd Patterson, NY 12563
INTPRT	DRAWING JAN ML-STD-300	GP	DATE	
CS	DIMENSIONING PER ASME Y14.5M-2009	CS	DATE	
ENGR	PARENTHEICAL INFO FOR REF ONLY	ENGR	DATE	
DATE	DIMENSIONS ARE IN INCHES (MM)	DATE	DATE	TITLE D10533-20 3-WAY COMBINER/DIVIDER
DATE	DIMENSIONAL LIMITS APPLY BEFORE PROCESSES	DATE	DATE	
DATE	TOLERANCES:	DATE	DATE	SCALE 1:1 SHEET 1 OF 1
DATE	ANGLES ± .2°	DATE	DATE	
DATE	3/16 ± .005 (.13)	DATE	DATE	
DATE	2/R ± .015 (.4)	DATE	DATE	
DATE	REMOVE ALL BURS AND SHARP EDGES R.01 MAX	DATE	DATE	
DATE	CONCENTRICITY MACHINED DIA: .001 FIM	DATE	DATE	
DATE	MACHINE TOOL HOLDING: .002 MAX	DATE	DATE	
APPLICATION	THIRD ANGLE PROJECTION			

Restriction on use, duplication, or disclosure of proprietary information. This document contains proprietary information which is the sole property of Werlatone, Inc.
 Werlatone, Inc. 17 Jon Barrett Road Patterson, NY 12563 T:(845)278-2220 F:(845)278-3440 sales@werlatone.com www.werlatone.com