

Werlatone® Mismatch Tolerant® High Power Broadband RF Combiners and Dividers will operate into High Load VSWR Conditions, for extended periods, without damage. With extensive experience as a supplier to military platforms worldwide **Werlatone®** designs its High Power Broadband Combiners, Power Dividers, and N-Way Combiners for proper operation in the most stringent operating conditions.

Features:

High Power Wide Bandwidths Small Size High Isolation Custom Designs Available

Electrical Specifications:

Frequency: 1000 - 2000 MHz
 Power: 600 W CW
 Insertion Loss: 0.25 dB Max.
 VSWR: 1.40:1 Max.
 Phase Balance: ± 5° Max.
 Amplitude Balance: 0.1 dB Max.
 Isolation: 15 dB Min.

Mechanical Specifications:

Type: Connectorized
 Material: Aluminum 6061-T6
 Surface Finish: Chem. Film Per MIL-DTL-5541F Type I Class 3 (Yellow Iridite) RoHS Compliant Available
 Operating Temperature: -55°C to +75°C
 Storage Temperature: -60°C to +85°C
 Weight: 1 lb. 4 oz. (-10)
 Size: 4.0 x 3.5 x 1.16"

Connector Configurations:

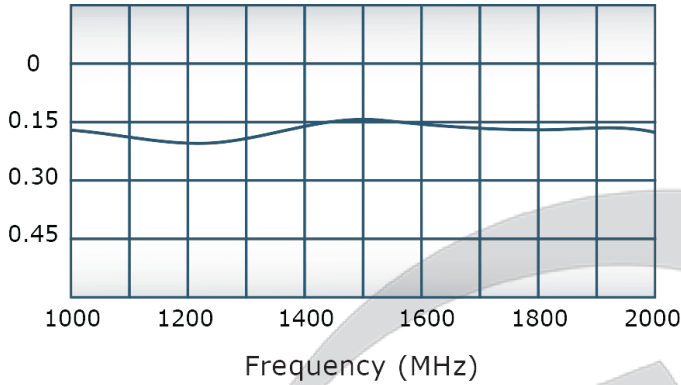
Model	Sum Port (J1)	Input/Output (J2)	Input/Output (J3)
D10359-10	N Female	N Female	N Female
D10359-300	TNC	TNC	TNC

When specified, Werlatone® High Power Combiners and RF Dividers will tolerate full input failures on adjacent port(s). This insures that remaining transmitter(s) may continue to operate until the amplifier system can be properly shut down for maintenance. Choose your specific connector configuration from a list of options. Additional connector configurations for our High Power RF Combiners/Dividers, Non-Coherent Combiners, and N-Way Combiners are available upon request.

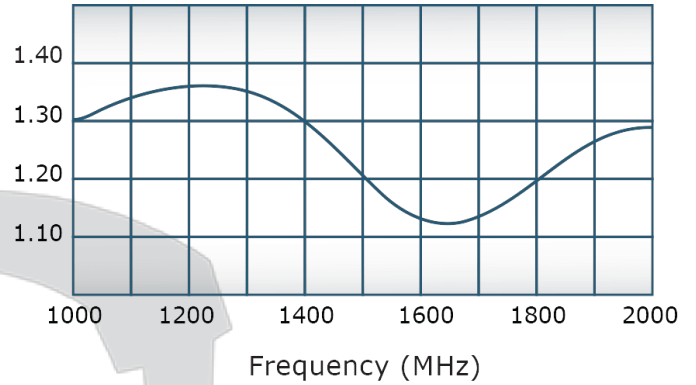


Performance Data (Specifications subject to change without notice):

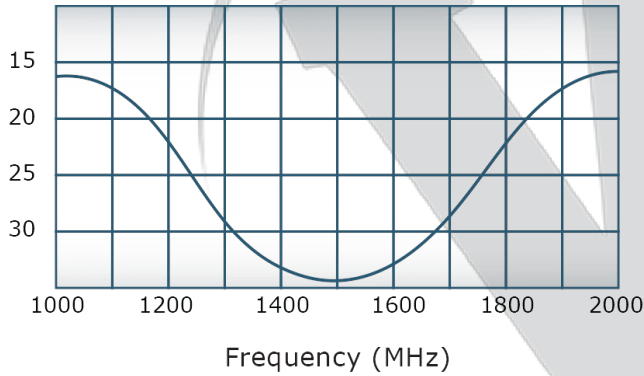
Insertion Loss:



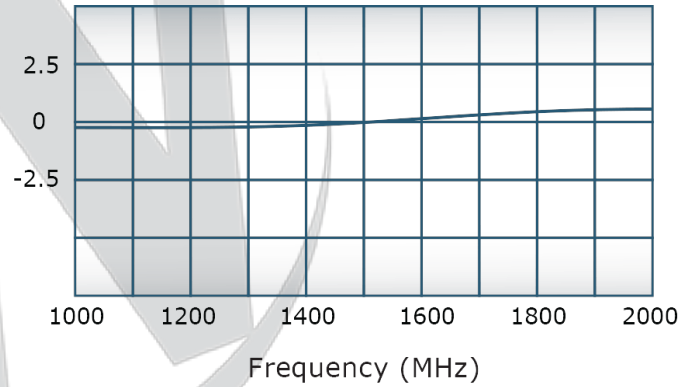
VSWR:



Isolation:



Phase Balance:



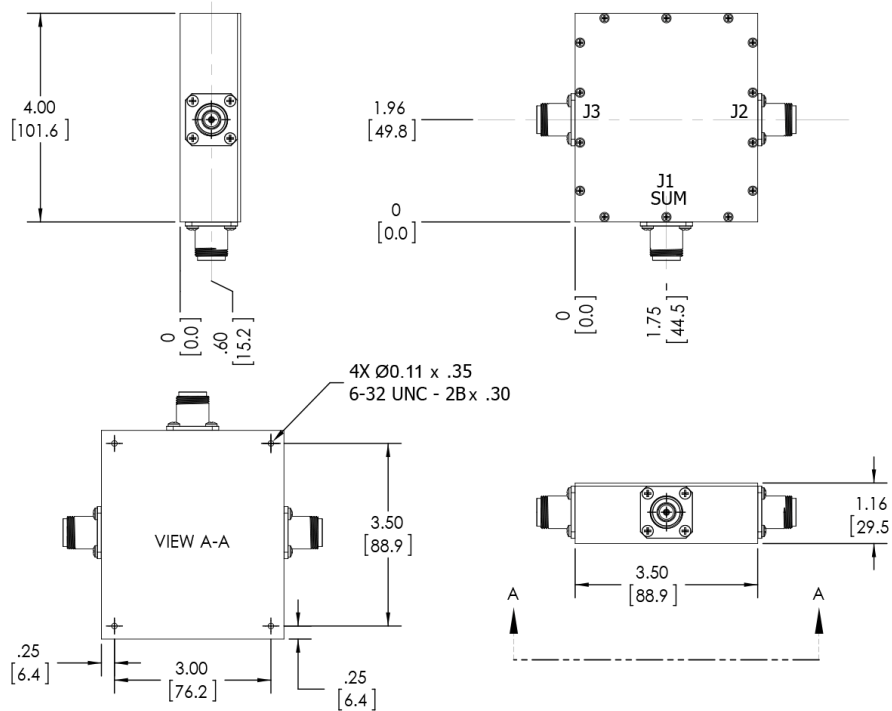
Restriction on use, duplication, or disclosure of proprietary information. This document contains proprietary information which is the sole property of

Werlatone, Inc.

Werlatone, Inc. 17 Jon Barrett Road Patterson, NY 12563 T:(845)278-2220 F:(845)278-3440 sales@werlatone.com www.werlatone.com

RESTRICTION ON USE, DUPLICATION OR DISCLOSURE OF PROPRIETARY INFORMATION
 This document contains proprietary information which is the sole property of Werlatone, Inc.

REVISION HISTORY			
REV.	REVISION RECORD	DATE	APPROVED
	PRE-RELEASE		



PRELIMINARY DWG. SPECIFICATIONS MAY CHANGE PRIOR TO DWG RELEASE.

UNLESS OTHERWISE SPECIFIED		DATE	17 Jon Barrett Rd Patterson, NY 12563
INTERPRET DRAWING PER MIL-STD-100	PLP	4/23/2015	WERLATONE SINCE 1965
DIMENSIONS PER ASME Y14.5M-2009	CHK	DATE	
MATHEMATICAL INFO FOR REF ONLY	NH	4/23/2015	TITLE
DIMENSIONS ARE IN INCHES (mm)	ENGR	DATE	OUTLINE
DIMENSIONAL LINES APPLY BEFORE PROCESSES	MPGR	DATE	SIZE
TOLERANCES:	QA	DATE	CAGE CODE
ANGLES = 3°	RELE	DATE	DWG NO
3 RL ± .006 [13]			B 28812 21315-500
2 RL ± .015 [38]			SCALE
REMOVE ALL BURRS AND SHARP EDGES R.01 MAX			1:2
CONCENTRICITY FRACTIONED DIA - .002 FPM			SHEET 1 OF 1
MACHINE TOOL MISMATCH .003 MAX			
THIRD ANGLE PROJECTION			
NEXT ASSY	USED ON		
APPLICATION			

Restriction on use, duplication, or disclosure of proprietary information. This document contains proprietary information which is the sole property of Werlatone, Inc.
 Werlatone, Inc. 17 Jon Barrett Road Patterson, NY 12563 T:(845)278-2220 F:(845)278-3440 sales@werlatone.com www.werlatone.com