
PRODUCT DATA SHEET
D10296

Werlatone® Mismatch Tolerant® High Power Broadband RF Combiners and Dividers will operate into High Load VSWR Conditions, for extended periods, without damage. With extensive experience as a supplier to military platforms worldwide **Werlatone®** designs its High Power Broadband Combiners, Power Dividers, and N-Way Combiners for proper operation in the most stringent operating conditions.

Features:

High Power Wide Bandwidths Small Size High Isolation Custom Designs Available

Electrical Specifications:

Frequency: 2000 - 6000 MHz
 Power: 200 W CW
 Insertion Loss: 1.0 dB Max.
 VSWR: 1.60:1 Max.
 Phase Balance: $\pm 5^\circ$ Max.
 Amplitude Balance: 0.3 dB Max.
 Isolation: 15 dB Min.

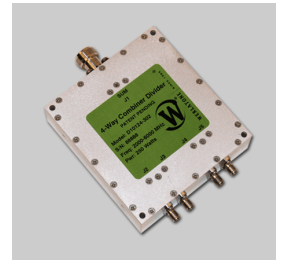
Mechanical Specifications:

Type: Connectorized
 Material: Aluminum 6061-T6
 Surface Finish: Chem. Film Per MIL-DTL-5541F Type II
 Class 3 (Clear Iridite) RoHS Compliant
 Available
 Operating Temperature: -55°C to +75°C
 Storage Temperature: -60°C to +85°C
 Weight: 1.1 lbs.
 Size: 3.9 x 3.6 x 1.06"

Connector Configurations:

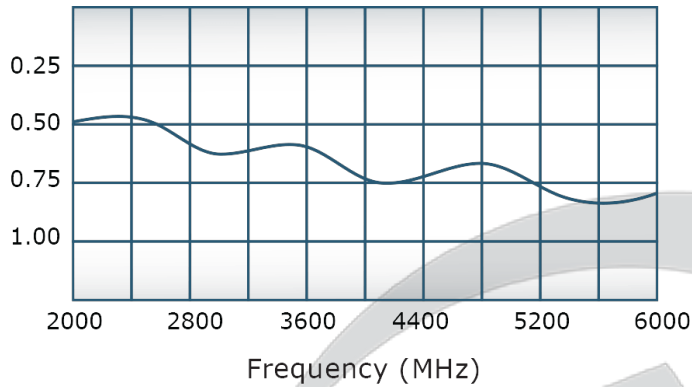
Model	Sum Port (J1)	Input/Output (J2-J5)
D10296-12	N Female	SMA
D10296-302	TNC	SMA

When specified, Werlatone® High Power Combiners and RF Dividers will tolerate full input failures on adjacent port(s). This insures that remaining transmitter(s) may continue to operate until the amplifier system can be properly shut down for maintenance. Choose your specific connector configuration from a list of options. Additional connector configurations for our High Power RF Combiners/Dividers, Non-Coherent Combiners, and N-Way Combiners are available upon request.

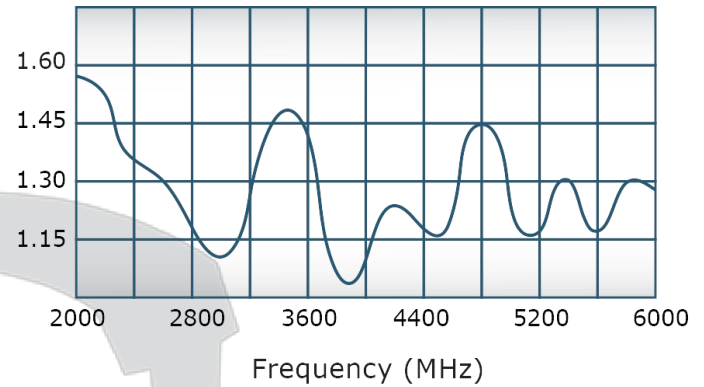


Performance Data (Specifications subject to change without notice):

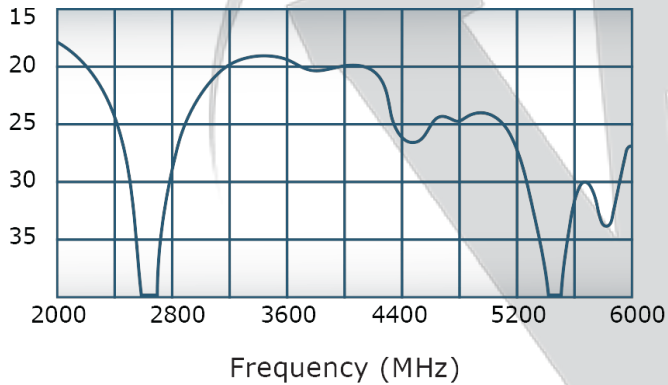
Insertion Loss:



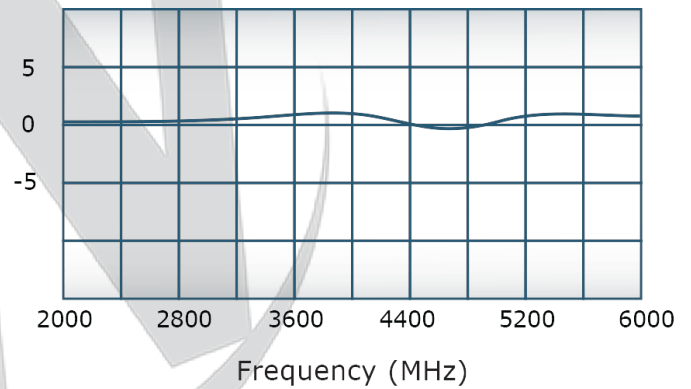
VSWR:



Isolation:

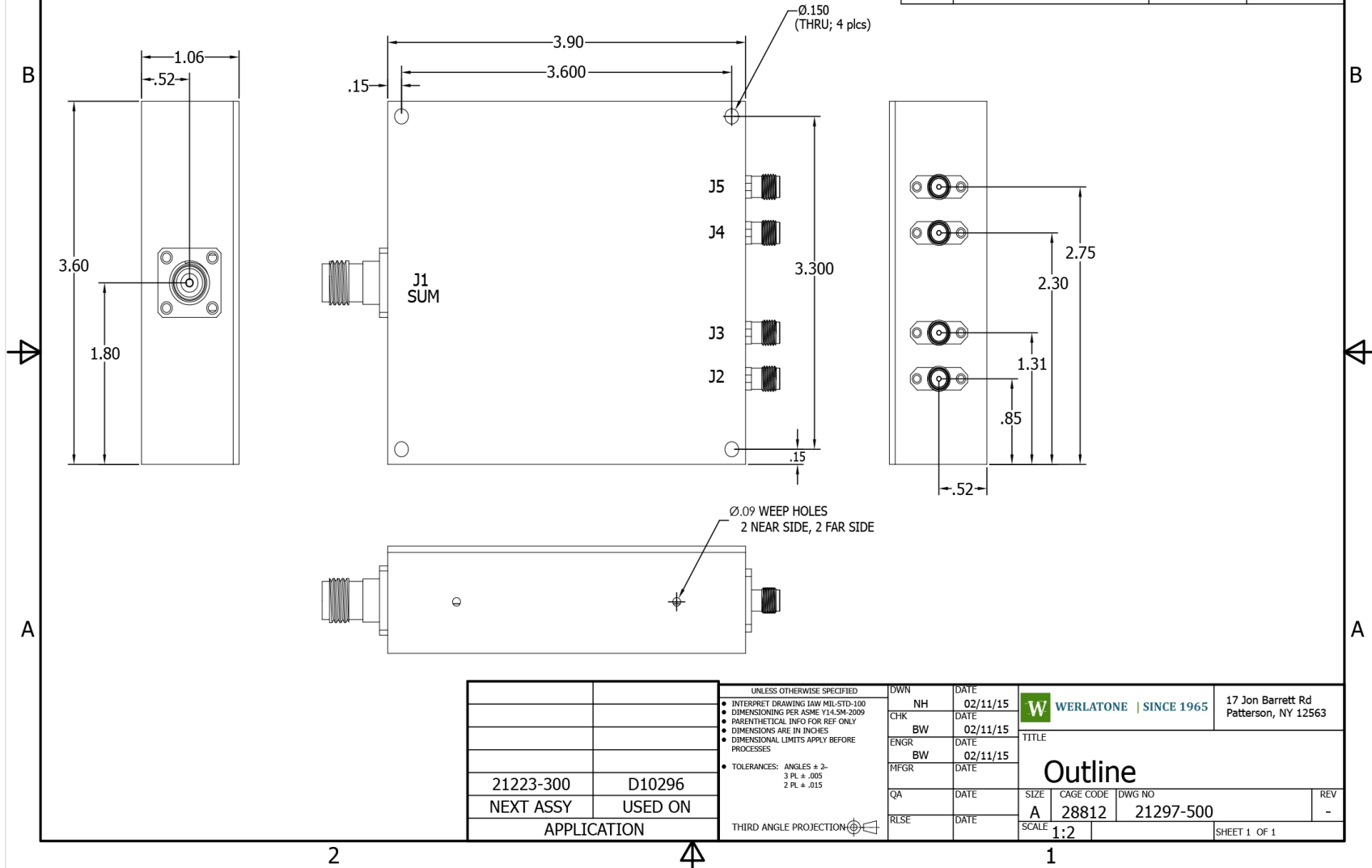


Phase Balance:



RESTRICTION ON USE, DUPLICATION OR DISCLOSURE OF PROPRIETARY INFORMATION
 This document contains proprietary information which is the sole property of Werlatone, Inc.

REVISION HISTORY			
REV	REVISION RECORD	DATE	APPROVED
-	Initial Rls	2/11/2015	BW



UNLESS OTHERWISE SPECIFIED		DWN	DATE	WERLATONE SINCE 1965	17 Jon Barrett Rd Patterson, NY 12563
<ul style="list-style-type: none"> • INTERPRET DRAWING LAW MIL-STD-100 • DIMENSIONING PER ASME Y14.5M-2009 • PARENTHETICAL INFO FOR REF ONLY • DIMENSIONS ARE IN INCHES • DIMENSIONAL LIMITS APPLY BEFORE PROCESSES 		CHK	DATE		
21223-300	D10296	BW	02/11/15	TITLE	
NEXT ASSY	USED ON	ENGR	DATE	<h1>Outline</h1>	
APPLICATION		MFGR	DATE	SIZE	CAGE CODE
THIRD ANGLE PROJECTION		QA	DATE	A	28812
		RLSE	DATE	DWG NO	21297-500
				SCALE	1:2
					SHEET 1 OF 1

Restriction on use, duplication, or disclosure of proprietary information. This document contains proprietary information which is the sole property of Werlatone, Inc.
 Werlatone, Inc. 17 Jon Barrett Road Patterson, NY 12563 T:(845)278-2220 F:(845)278-3440 sales@werlatone.com www.werlatone.com