

Werlatone® Mismatch Tolerant® High Power Broadband RF Combiners and Dividers will operate into High Load VSWR Conditions, for extended periods, without damage. With extensive experience as a supplier to military platforms worldwide **Werlatone®** designs its High Power Broadband Combiners, Power Dividers, and N-Way Combiners for proper operation in the most stringent operating conditions.

Features:

High Power Wide Bandwidths Small Size High Isolation Custom Designs Available

Electrical Specifications:

Frequency: 0.1 - 80 MHz
 Power: 25 W CW
 Insertion Loss: 0.3 dB Max.
 VSWR: 1.30:1 Max.
 Phase Balance: $\pm 5^\circ$ Max.
 Amplitude Balance: ± 0.15 dB Max.
 Isolation: 25 dB Min.

Mechanical Specifications:

Type: Connectorized
 Material: Aluminum 6061-T6
 Surface Finish: Chem. Film Per MIL-DTL-5541F Type I Class 2 (Clear Iridite) RoHS Compliant Available
 Operating Temperature: -55°C to +75°C
 Storage Temperature: -60°C to +85°C
 Weight: 0 lbs. 12 oz.
 Size: 5.0 x 3.0 x 1.5"

Connector Configurations:

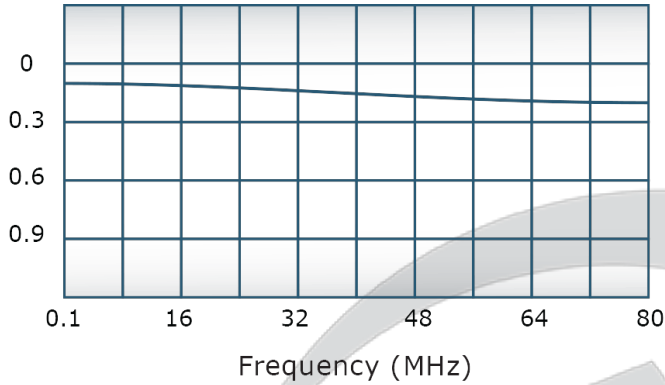
Model	Sum Port (J1)	Input/Output (J2)	Input/Output (J3)
D10219-10	N Female	N Female	N Female
D10219-102	SMA Female	SMA Female	SMA Female

When specified, Werlatone® High Power Combiners and RF Dividers will tolerate full input failures on adjacent port(s). This insures that remaining transmitter(s) may continue to operate until the amplifier system can be properly shut down for maintenance. Choose your specific connector configuration from a list of options. Additional connector configurations for our High Power RF Combiners/Dividers, Non-Coherent Combiners, and N-Way Combiners are available upon request.

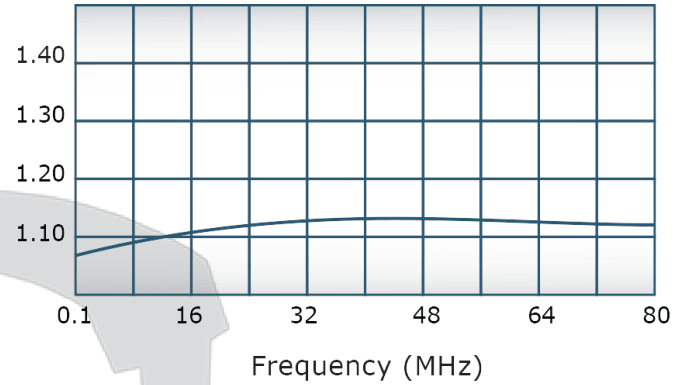


Performance Data (Specifications subject to change without notice):

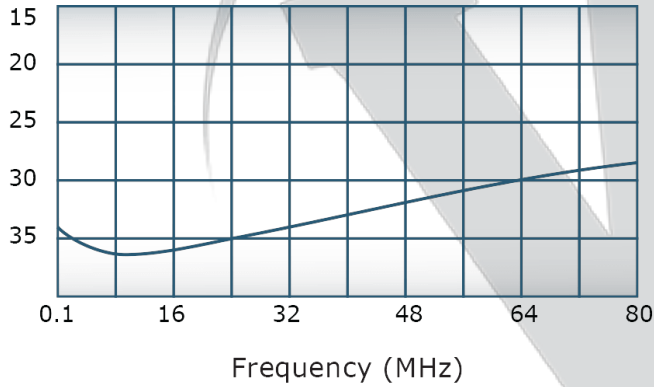
Insertion Loss:



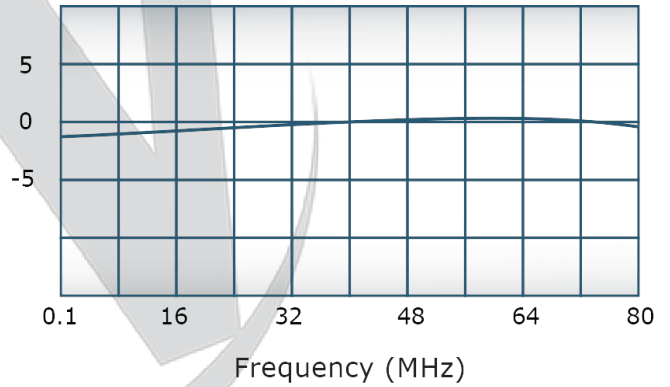
VSWR:



Isolation:



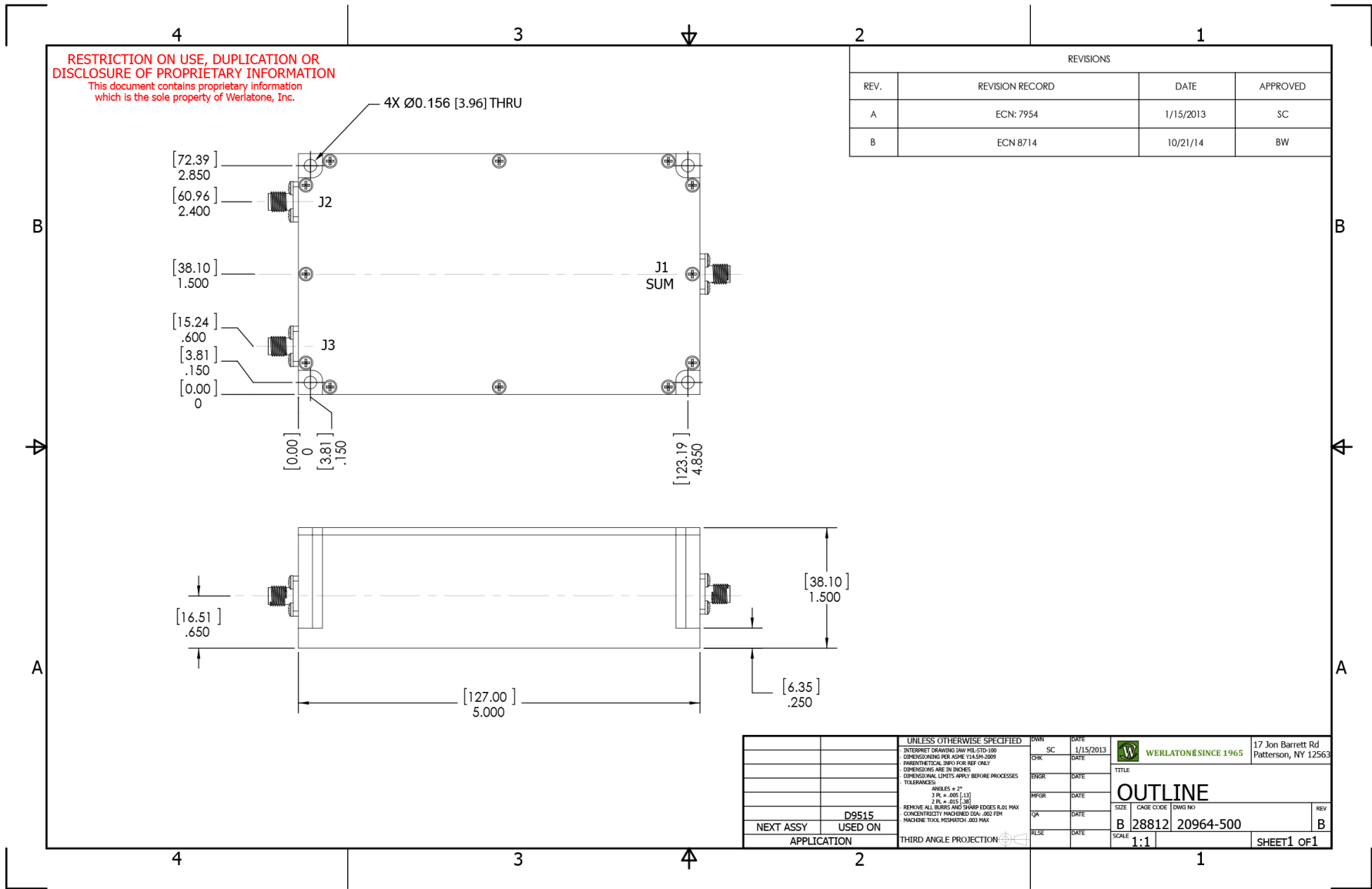
Phase Balance:



Restriction on use, duplication, or disclosure of proprietary information. This document contains proprietary information which is the sole property of

Werlatone, Inc.

Werlatone, Inc. 17 Jon Barrett Road Patterson, NY 12563 T:(845)278-2220 F:(845)278-3440 sales@werlatone.com www.werlatone.com



RESTRICTION ON USE, DUPLICATION OR DISCLOSURE OF PROPRIETARY INFORMATION
 This document contains proprietary information which is the sole property of Werlatone, Inc.

REVISIONS			
REV.	REVISION RECORD	DATE	APPROVED
A	ECN: 7954	1/15/2013	SC
B	ECN 8714	10/21/14	BW

UNLESS OTHERWISE SPECIFIED		OWN	DATE	WERLATONE SINCE 1965 17 Jon Barrett Rd Patterson, NY 12563
INTERPRET DRAWING IN ACCORDANCE WITH MIL-STD-100		CHK	1/15/2013	
DIMENSIONS ARE IN INCHES		DATE		TITLE
DIMENSIONS ARE IN MILLIMETERS		DATE		OUTLINE
DIMENSIONS ARE IN INCHES		DATE		SIZE
DIMENSIONS ARE IN MILLIMETERS		DATE		B 28812 20964-500
TOLERANCES:		DATE		REV
ANGLES = 3°		DATE		B
3 R. ± .005 (13)		DATE		
2 R. ± .015 (38)		DATE		
REMOVE ALL BURRS AND SHARP EDGES R.01 MAX		DATE		
CONCENTRICITY FACHDED 0.04-0.02 FPM		DATE		
MACHINE TOOL MISMATCH .003 MAX		DATE		
NEXT ASSY	D9515	DATE		SCALE
USED ON		DATE		1:1
APPLICATION		DATE		SHEET 1 OF 1
THIRD ANGLE PROJECTION		DATE		

Restriction on use, duplication, or disclosure of proprietary information. This document contains proprietary information which is the sole property of Werlatone, Inc.
 Werlatone, Inc. 17 Jon Barrett Road Patterson, NY 12563 T:(845)278-2220 F:(845)278-3440 sales@werlatone.com www.werlatone.com