
PRODUCT DATA SHEET
D11906

Werlatone® Mismatch Tolerant® High Power Broadband RF Combiners and Dividers will operate into High Load VSWR Conditions, for extended periods, without damage. With extensive experience as a supplier to military platforms worldwide **Werlatone®** designs its High Power Broadband Combiners, Power Dividers, and N-Way Combiners for proper operation in the most stringent operating conditions.

Features:

High Power Wide Bandwidths Small Size High Isolation Custom Designs Available

Electrical Specifications:

Frequency:	2000 - 6000 MHz
Power:	500 W CW
Insertion Loss:	0.6 dB Max.
VSWR:	1.50:1 Max.
Phase Balance:	± 5° Max.
Amplitude Balance:	0.3 dB Max.
Isolation:	Non-Isolated

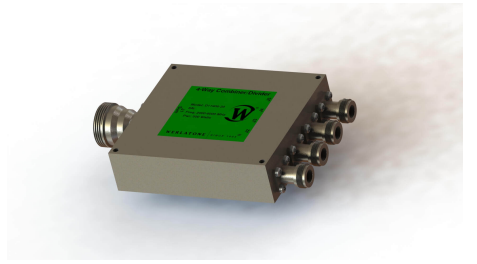
Mechanical Specifications:

Type:	Connectorized
Material:	Aluminum 6061-T6
Surface Finish:	Electroless Nickel. ASTM B733 TY IV .002/.004 EN AMS-QQ-N290 CL 1.0002/.004
Operating Temperature:	-55°C to +75°C
Storage Temperature:	-60°C to +85°C
Size:	4.35 x 3.9 x 1.15"

Connector Configurations:

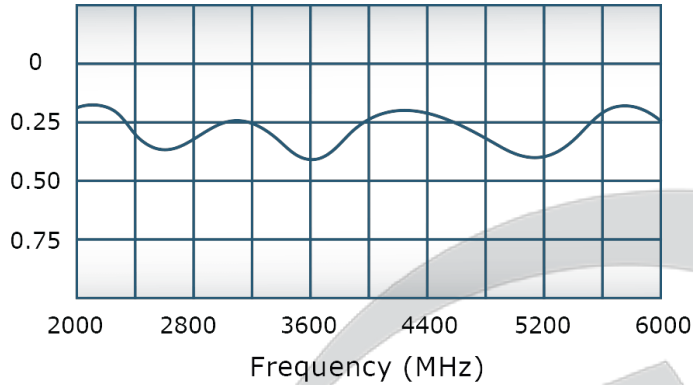
Model	Sum Port (J1)	Input/Output (J2-J5)
D11906-10	N Female	N Female
D11906-20	7/16 Female	N Female

When specified, Werlatone® High Power Combiners and RF Dividers will tolerate full input failures on adjacent port(s). This insures that remaining transmitter(s) may continue to operate until the amplifier system can be properly shut down for maintenance. Choose your specific connector configuration from a list of options. Additional connector configurations for our High Power RF Combiners/Dividers, Non-Coherent Combiners, and N-Way Combiners are available upon request.

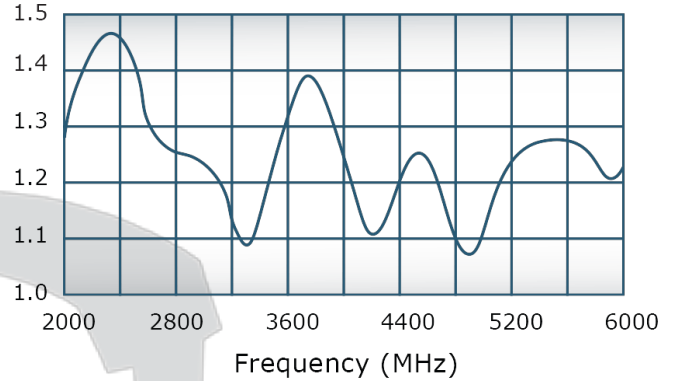


Performance Data (Specifications subject to change without notice):

Insertion Loss:



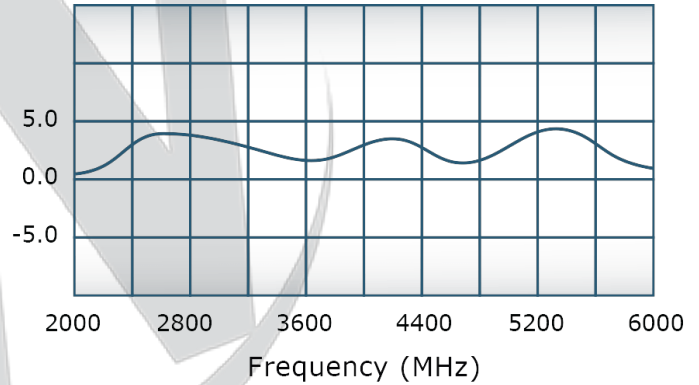
VSWR:



Since 1965:



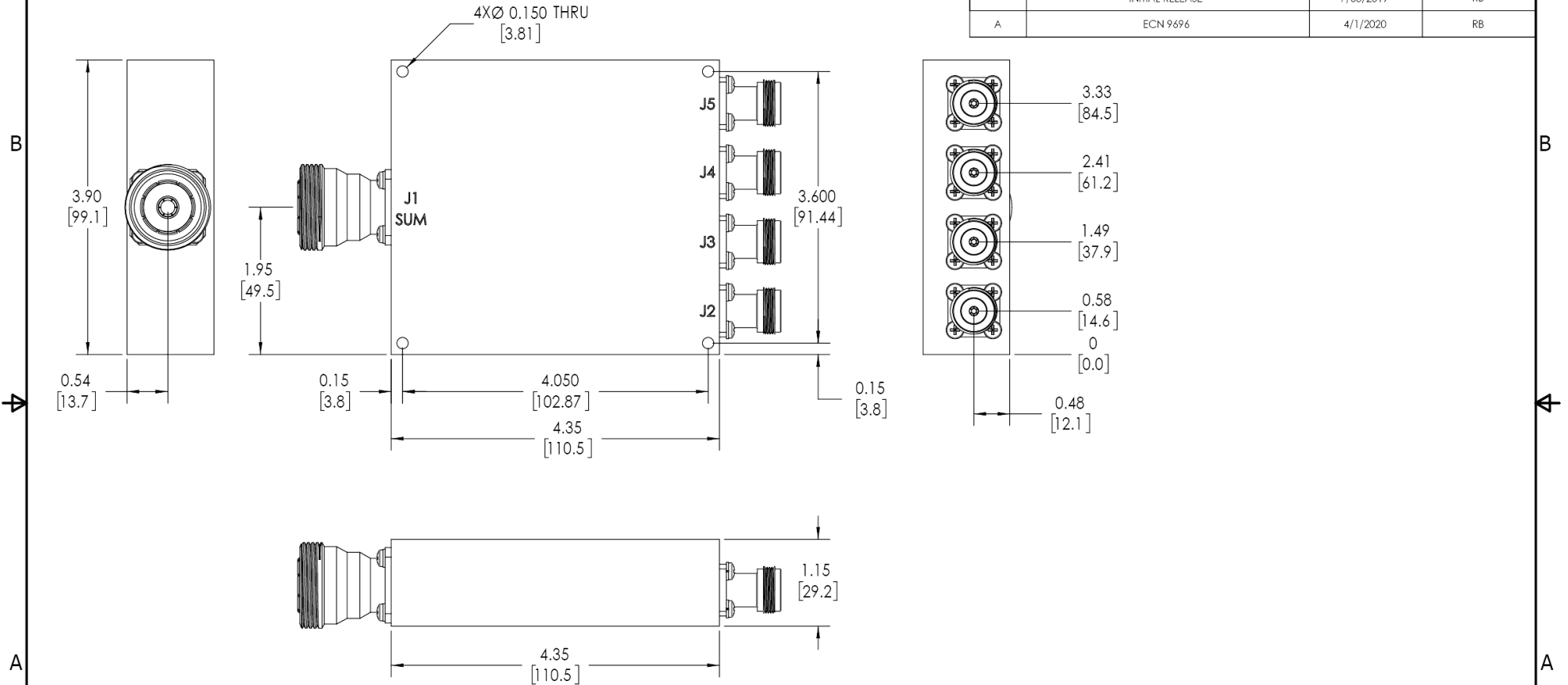
Phase Balance:



RESTRICTION ON USE, DUPLICATION OR DISCLOSURE OF PROPRIETARY INFORMATION

This document contains proprietary information which is the sole property of Werlatone, Inc.

REVISION HISTORY			
REV.	REVISION RECORD	DATE	APPROVED
-	INITIAL RELEASE	7/03/2019	RB
A	ECN 9696	4/1/2020	RB



NOTES: UNLESS OTHERWISE SPECIFIED

- MATERIAL: ALUMINUM 6061-T6**
- FINISH: ASTM B733 TY IV .0002/.0004 EN AMS-QQ-N290 CL 1 .0002/.0004**
- CONNECTORS:**
 J1: 7/16 FEMALE
 J2-J5: N FEMALE

UNLESS OTHERWISE SPECIFIED		OWN	DATE	WERLATONE SINCE 1965	17 Jon Barrett Rd Patterson, NY 12563	
INTERPRET DRAWING IAW MIL-STD-100	SD	4/1/2020				
DIMENSIONS PER ASME Y14.5M-2009	CHK	DATE		TITLE	REV	
PARENTHETICAL INFO FOR REF ONLY	CS	4/1/2020				OUTLINE
DIMENSIONS ARE IN INCHES	ENGR	DATE		SIZE	CAGE CODE	
DIMENSIONAL LIMITS APPLY BEFORE FINISHES	INFR	DATE		B		21524-502
TOLERANCES:	QA	DATE		SCALE		
ANGLES ± 2°	RLSE	DATE		1:1.25		
3 PL ± .005 (.13)						
2 PL ± .015 (.38)						
REMOVE ALL BURRS AND SHARP EDGES R.01 MAX						
CONCENTRICITY MACHINED DIA: .002 FIM						
MACHINE TOOL MISMATCH .003 DIA.						
NEXT ASSY	USED ON					
APPLICATION	THIRD ANGLE PROJECTION					SHEET 1 OF 1

Restriction on use, duplication, or disclosure of proprietary information. This document contains proprietary information which is the sole property of Werlatone, Inc.
 Werlatone, Inc. 17 Jon Barrett Road Patterson, NY 12563 T:(845)278-2220 F:(845)278-3440 sales@werlatone.com www.werlatone.com