

PRODUCT DATA SHEET

QH10756

Our patented 3 dB 90° Hybrid Couplers provide:

- Superior component performance starting at 3:1 Bandwidth.
- Thicker center boards for high power and increased repeatability.
- Bonded structures which eliminate any air gaps between substrates.
- More sections per bandwidth for better coupling flatness.
- Electrically shorter and physically smaller RF components.

Features:

High Power Wide Bandwidths Small Size Excellent Amplitude Balance

Electrical Specifications:

Frequency: 700 - 6000 MHz
Power: 100 W CW
Insertion Loss: 0.55 dB Max.
VSWR: 1.40:1 Max.
Phase Balance: $\pm 5^\circ$ dB Max.
Amplitude Balance: ± 0.6 dB Max.
Isolation: 16 dB Min.

Mechanical Specifications:

Type: Surface Mount
Plating Options: QH10756-Ag: Immersion Silver (RoHS)
Size: 0.744 x 0.450 x 0.093"

Port Configurations:

J1	J2	J3	J4
Input	-3 dB, 0°	-3 dB, -90°	Isolated
-3 dB, 0°	Input	Isolated	-3 dB, -90°
-3 dB, -90°	Isolated	Input	-3 dB, 0°
Isolated	-3 dB, -90°	-3 dB, 0°	Input

Werlatone's breakthrough technology allows us to build our existing line of Broadband 3 dB High Power 90° Hybrid Couplers. Connectorized 3 dB 90° Hybrid Coupler models are available with a choice of connectors. Several of our existing High Power 3 dB 90° RF Couplers are three port designs, wherein the difference port is internally terminated with a high power termination. This eliminates the need for a customer supplied external load for each Hybrid Coupler.

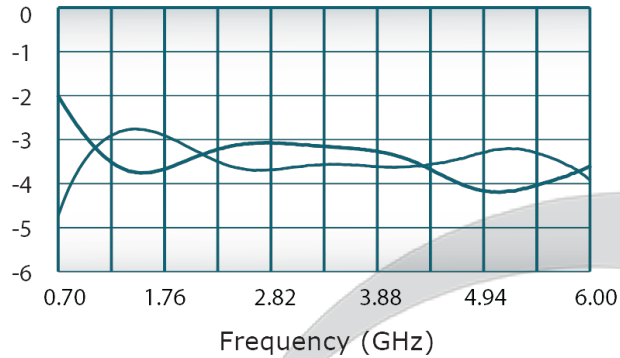


PRODUCT DATA SHEET

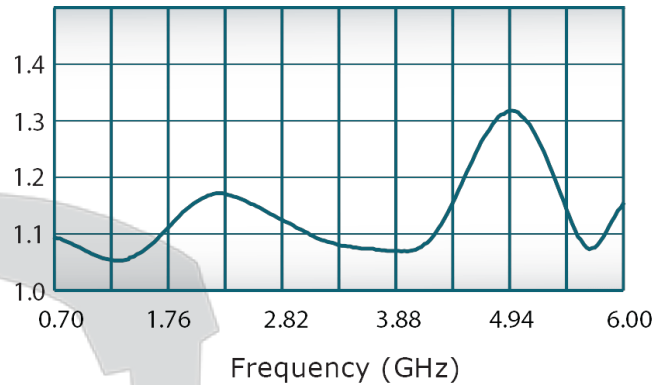
QH10756

Performance Data (Specifications subject to change without notice):

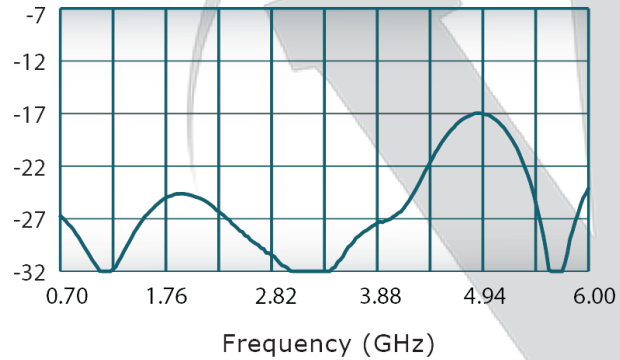
Coupling:



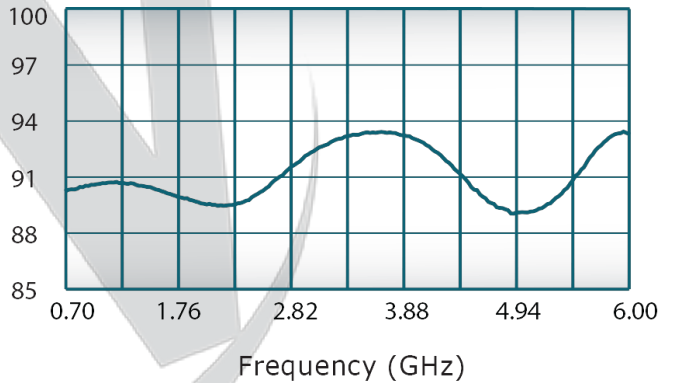
VSWR:



Isolation:

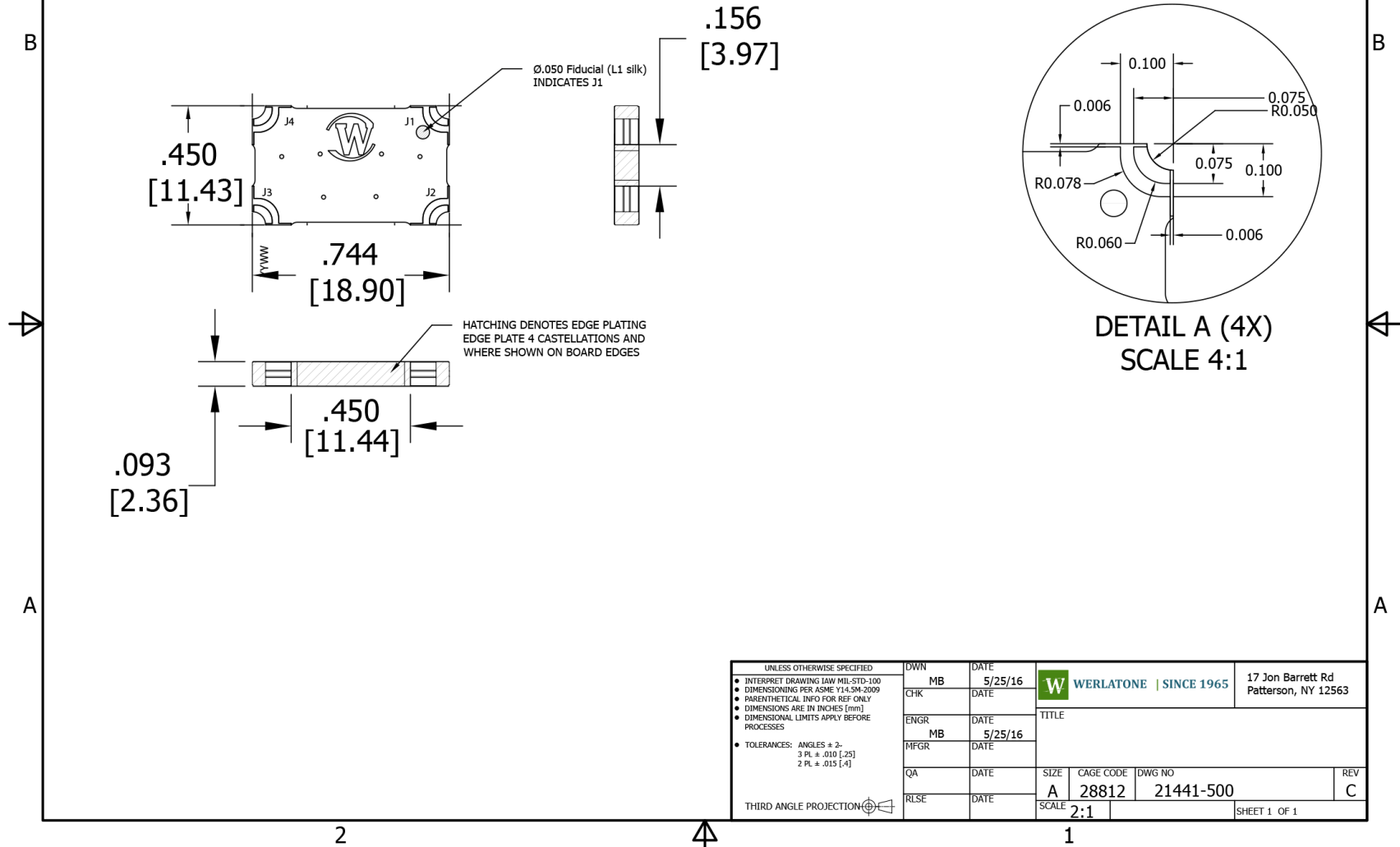


Phase Balance:



RESTRICTION ON USE, DUPLICATION OR
DISCLOSURE OF PROPRIETARY INFORMATION
This document contains proprietary information
which is the sole property of Werlatone, Inc.

REVISION HISTORY			
REV	REVISION RECORD	DATE	APPROVED
-	Preliminary		
A	ECN9141	8/11/2016	MB
B	ECN9512	2/12/2018	CS
C	ECN9573	5/10/2018	CS



Restriction on use, duplication, or disclosure of proprietary information. This document contains proprietary information which is the sole property of Werlatone, Inc.
Werlatone, Inc. 17 Jon Barrett Road Patterson, NY 12563 T:(845)278-2220 F:(845)278-3440 sales@werlatone.com www.werlatone.com