
PRODUCT DATA SHEET
QH10541
Our patented 3 dB 90° Hybrid Couplers provide:

- Superior component performance starting at 3:1 Bandwidth.
- Thicker center boards for high power and increased repeatability.
- Bonded structures which eliminate any air gaps between substrates.
- More sections per bandwidth for better coupling flatness.
- Electrically shorter and physically smaller RF components.

Features:

High Power Wide Bandwidths Small Size Excellent Amplitude Balance

Electrical Specifications:

Frequency:	700 - 6000 MHz
Power:	150 W CW
Insertion Loss	0.5 dB Max.
VSWR:	1.40:1 Max.
Phase Balance:	± 5° dB Max.
Amplitude Balance:	± 1.5 dB Max. (700-900 MHz) ± 0.6 dB Max. (900-6000 MHz)
Isolation:	17 dB Min.

Mechanical Specifications:

Type:	Surface Mount
Plating Options:	QH10541-Ag: Immersion Silver (RoHS)
Size:	0.66 x 0.86 x 0.09"
Operating Temperature:	-55°C to +75°C
Weight:	0.1 lb

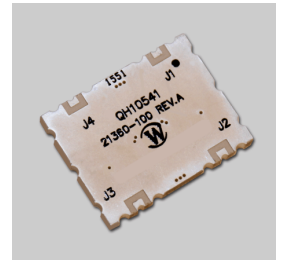
Port Configurations:

J1	J2	J3	J4
Input	-3 dB, 0°	-3 dB, -90°	Isolated
-3 dB, 0°	Input	Isolated	-3 dB, -90°
-3 dB, -90°	Isolated	Input	-3 dB, 0°
Isolated	-3 dB, -90°	-3 dB, 0°	Input

Werlatone's breakthrough technology allows us to build our existing line of Broadband 3 dB High Power 90° Hybrid Couplers. Connectorized 3 dB 90° Hybrid Coupler models are available with a choice of connectors. Several of our existing High Power 3 dB 90° RF Couplers are three port designs, wherein the difference port is internally terminated with a high power termination. This eliminates the need for a customer supplied external load for each Hybrid Coupler.

Restriction on use, duplication, or disclosure of proprietary information. This document contains proprietary information which is the sole property of Werlatone, Inc.

Werlatone, Inc. 17 Jon Barrett Road Patterson, NY 12563 T:(845)278-2220 F:(845)278-3440 sales@werlatone.com www.werlatone.com

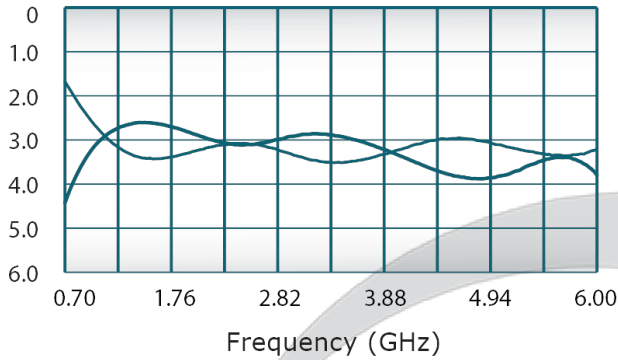


PRODUCT DATA SHEET

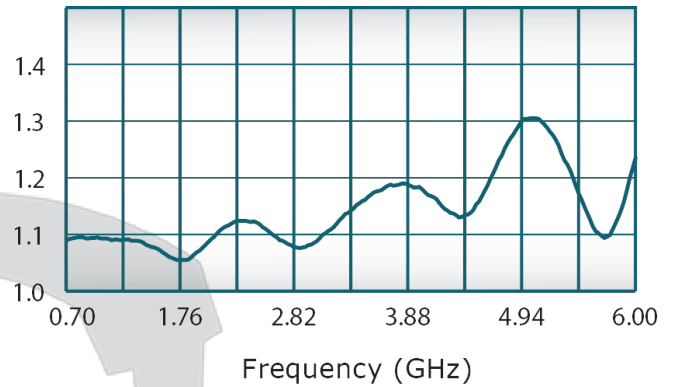
QH10541

Performance Data (Specifications subject to change without notice):

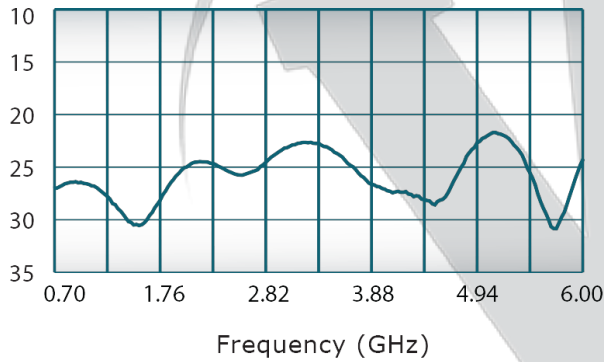
Coupling:



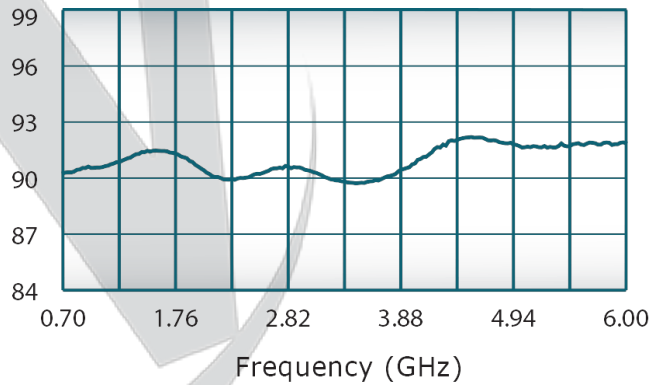
VSWR:



Isolation:



Phase Balance:



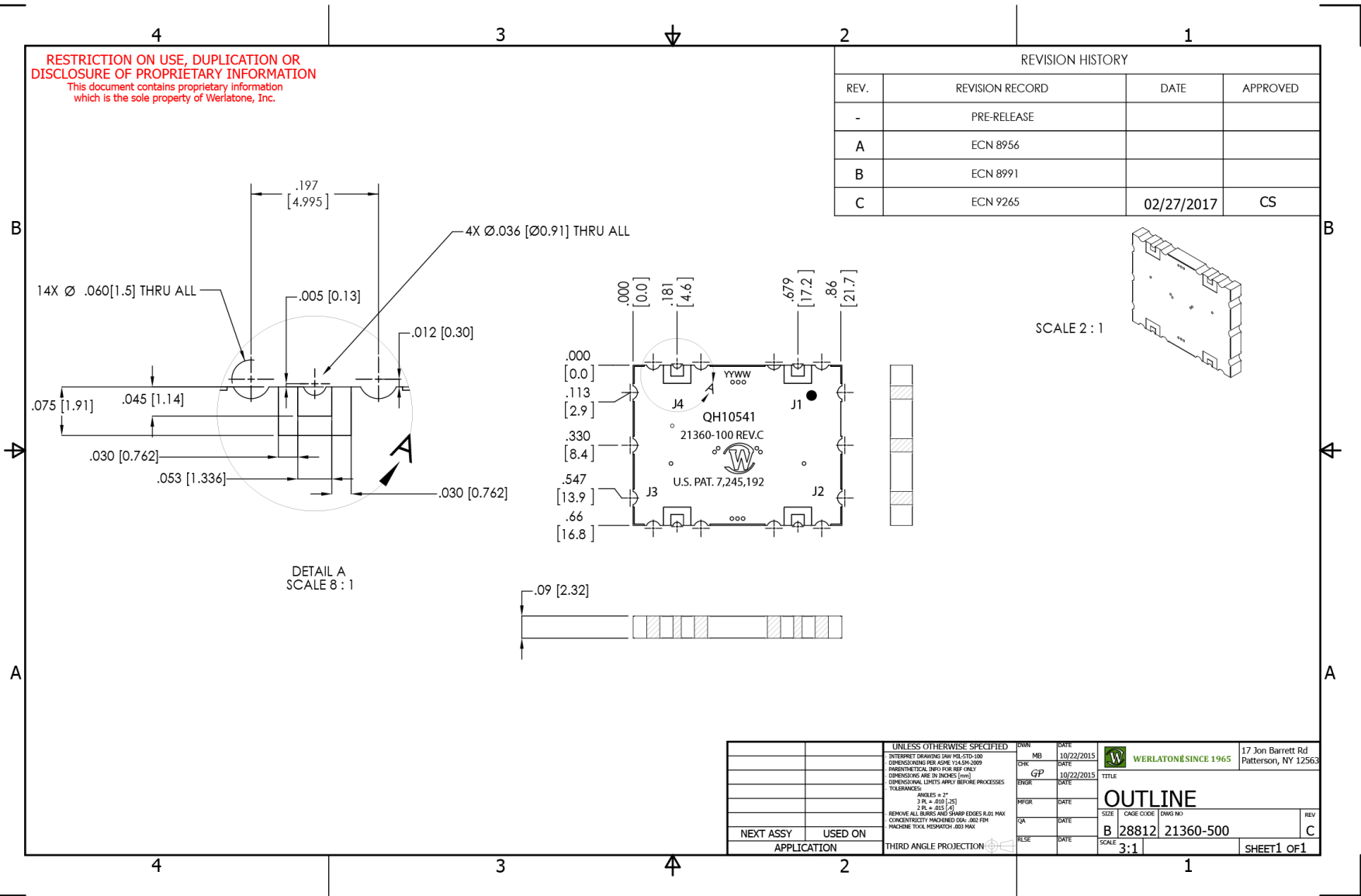
Restriction on use, duplication, or disclosure of proprietary information. This document contains proprietary information which is the sole property of

Werlatone, Inc.

Werlatone, Inc. 17 Jon Barrett Road Patterson, NY 12563 T:(845)278-2220 F:(845)278-3440 sales@werlatone.com www.werlatone.com

RESTRICTION ON USE, DUPLICATION OR DISCLOSURE OF PROPRIETARY INFORMATION
 This document contains proprietary information which is the sole property of Werlatone, Inc.

REVISION HISTORY			
REV.	REVISION RECORD	DATE	APPROVED
-	PRE-RELEASE		
A	ECN 8956		
B	ECN 8991		
C	ECN 9265	02/27/2017	CS



UNLESS OTHERWISE SPECIFIED		OWN	DATE	 WERLATONE SINCE 1965	17 Jon Barrett Rd Patterson, NY 12563
INTERPRET DRAWING IN ACCORDANCE WITH MIL-STD-100		CHK	DATE		
DIMENSIONS ARE PER ASME Y14.5M-2009		GP	DATE	TITLE	
DIMENSIONS ARE IN INCHES (mm)		ENGR	DATE	OUTLINE	
DIMENSIONAL UNITS APPLY BEFORE PROCESSES		MPGR	DATE	SIZE	CAGE CODE (DWG NO)
TOLERANCES:		QA	DATE	B	28812 21360-500
ANGLES = 3°		RELE	DATE	SCALE	3:1
3 RL ± .010 [25]					
2 RL ± .015 [40]					
REMOVE ALL BURRS AND SHARP EDGES R.01 MAX					
CONCENTRICITY FRACTURED DIA: .002 FPM					
MACHINE TOOL MISMATCH: .003 MAX					
NEXT ASSY	USED ON	THIRD ANGLE PROJECTION			
APPLICATION		SHEET 1 OF 1			

Restriction on use, duplication, or disclosure of proprietary information. This document contains proprietary information which is the sole property of Werlatone, Inc.
 Werlatone, Inc. 17 Jon Barrett Road Patterson, NY 12563 T:(845)278-2220 F:(845)278-3440 sales@werlatone.com www.werlatone.com