



PRODUCT DATA SHEET

QH10089

Our patented 3 dB 90° Hybrid Couplers provide:

- Superior component performance starting at 3:1 Bandwidth.
- Thicker center boards for high power and increased repeatability.
- Bonded structures which eliminate any air gaps between substrates.
- More sections per bandwidth for better coupling flatness.
- Electrically shorter and physically smaller RF components.

Features:

High Power Wide Bandwidths Small Size Excellent Amplitude Balance

Electrical Specifications:

Frequency: 800 - 2800 MHz
 Power: 200 W CW
 Insertion Loss: 0.35 dB Max.
 VSWR: 1.30:1 Max.
 Phase Balance: $\pm 5^\circ$ dB Max.
 Amplitude Balance: ± 0.4 dB Max.
 Isolation: 20 dB Min.

Mechanical Specifications:

Type: Surface Mount
 Plating Options: QH10089-Ag: Immersion Silver (RoHS)
 Size: 1.25 x 0.55 x 0.081"
 Weight: 2.5 grams

Port Configurations:

J1	J2	J3	J4
Input	-3 dB, 0°	-3 dB, -90°	Isolated
-3 dB, 0°	Input	Isolated	-3 dB, -90°
-3 dB, -90°	Isolated	Input	-3 dB, 0°
Isolated	-3 dB, -90°	-3 dB, 0°	Input

Werlatone's breakthrough technology allows us to build our existing line of Broadband 3 dB High Power 90° Hybrid Couplers. Connectorized 3 dB 90° Hybrid Coupler models are available with a choice of connectors. Several of our existing High Power 3 dB 90° RF Couplers are three port designs, wherein the difference port is internally terminated with a high power termination. This eliminates the need for a customer supplied external load for each Hybrid Coupler.

Restriction on use, duplication, or disclosure of proprietary information. This document contains proprietary information which is the sole property of Werlatone, Inc.

Werlatone, Inc. 17 Jon Barrett Road Patterson, NY 12563 T:(845)278-2220 F:(845)278-3440 sales@werlatone.com www.werlatone.com

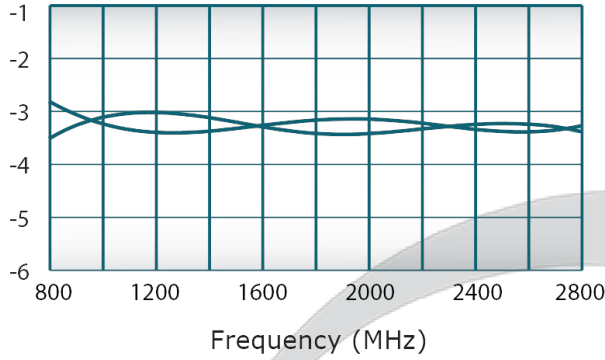


PRODUCT DATA SHEET

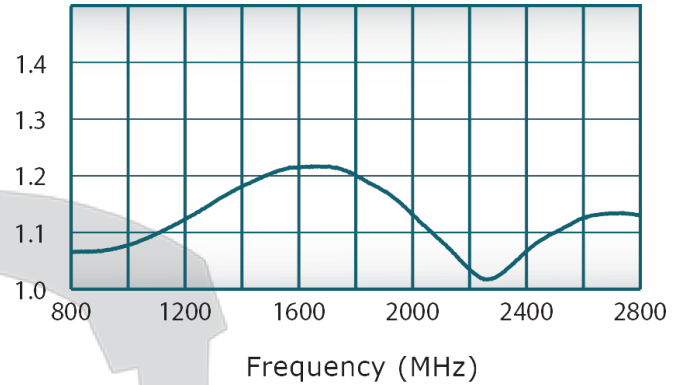
QH10089

Performance Data (Specifications subject to change without notice):

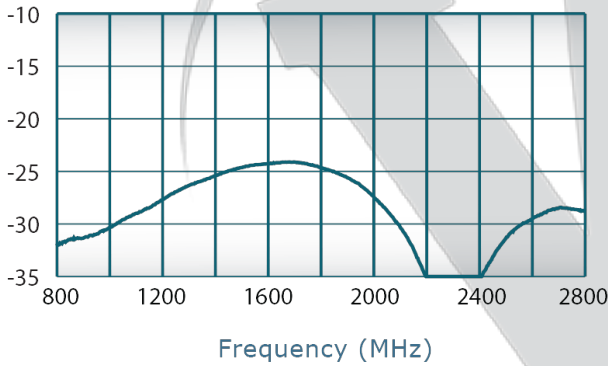
Coupling:



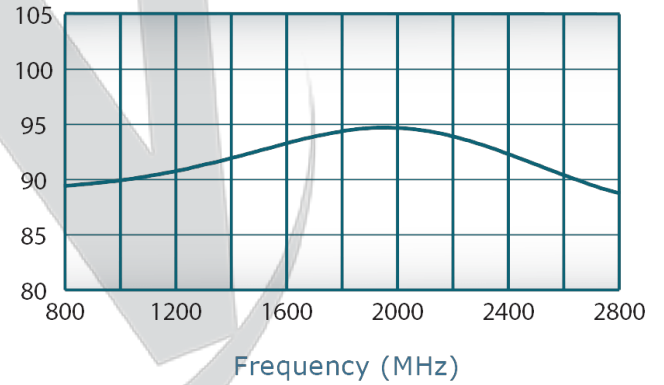
VSWR:



Isolation:



Phase Balance:



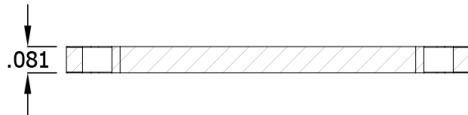
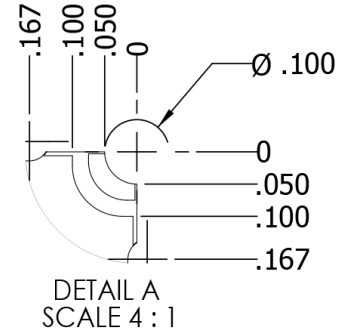
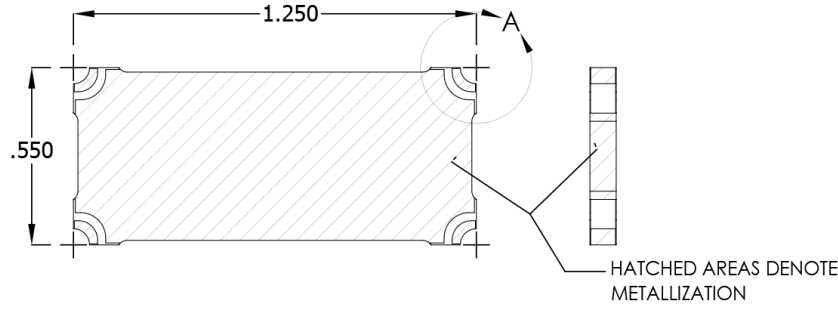
Restriction on use, duplication, or disclosure of proprietary information. This document contains proprietary information which is the sole property of

Werlatone, Inc.

Werlatone, Inc. 17 Jon Barrett Road Patterson, NY 12563 T:(845)278-2220 F:(845)278-3440 sales@werlatone.com www.werlatone.com

RESTRICTION ON USE, DUPLICATION OR DISCLOSURE OF PROPRIETARY INFORMATION
 This document contains proprietary information which is the sole property of Werlatone, Inc.

REVISION HISTORY			
REV.	DESCRIPTION	DATE	APPROVED
-	INITIAL-RELEASE	11/24/14	BW



		UNLESS OTHERWISE SPECIFIED		DWN	DATE	WERLATONE SINCE 1965	17 Jon Barrett Rd Patterson, NY 12563		
		INTERPRET DRAWING IAW MIL-STD-100 DIMENSIONING PER ASME Y14.5M-2009 PARENTHEICAL INFO FOR REF ONLY DIMENSIONS ARE IN INCHES TOLERANCES: - ANGLES ± 2° - 3 PL ± .010 - 2 PL ± .015		GP	11/24/2014		TITLE		
				CHK	DATE				
				ENGR	DATE				
				MFGR	DATE				
				QA	DATE	SIZE	CAGE CODE	DWG NO	REV
NEXT ASSY		USED ON		RLSE	DATE	A	28812	21207-500	-
APPLICATION				THIRD ANGLE PROJECTION		SCALE	SHEET		1 OF 1
						2:1			

Restriction on use, duplication, or disclosure of proprietary information. This document contains proprietary information which is the sole property of Werlatone, Inc.
 Werlatone, Inc. 17 Jon Barrett Road Patterson, NY 12563 T:(845)278-2220 F:(845)278-3440 sales@werlatone.com www.werlatone.com