

**PRODUCT DATA SHEET**

**QH8960**

**Our patented 3 dB 90° Hybrid Couplers provide:**

- Superior component performance starting at 3:1 Bandwidth.
- Thicker center boards for high power and increased repeatability.
- Bonded structures which eliminate any air gaps between substrates.
- More sections per bandwidth for better coupling flatness.
- Electrically shorter and physically smaller RF components.

**Features:**

High Power      Wide Bandwidths      Small Size      Connectorized      Drop-In & Surface Mount

**Electrical Specifications:**

Frequency:            470 - 860 MHz  
 Power:                250 W CW  
 Insertion Loss:      0.3 dB Max.  
 VSWR:                1.30:1 Max.  
 Phase Balance:      90° ± 3° Max.  
 Amplitude Balance: ± 0.75 dB Max.  
 Isolation:            20 dB Min.

**Mechanical Specifications:**

Type:                    Connectorized  
 Material:              Aluminum 6061-T6  
 Surface Finish:      Chem. Film Per MIL-DTL-5541F Type I Class 3 (Yellow Iridite) RoHS Compliant Available  
 Operating Temperature: -55°C to +75°C  
 Storage Temperature: -60°C to +85°C  
 Size:                    3.0 x 1.14 x 1.0"

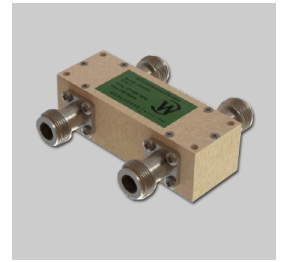
**Connector Configurations:**

Model	Sum Port (J1)	0°, -90° (J2,J3)	Isolated Port
QH8960-10	N Female	N Female	N Female

**Werlatone's** breakthrough technology allows us to build our existing line of Broadband 3 dB High Power 90° Hybrid Couplers. Connectorized 3 dB 90° Hybrid Coupler models are available with a choice of connectors. Several of our existing High Power 3 dB 90° RF Couplers are three port designs, wherein the difference port is internally terminated with a high power termination. This eliminates the need for a customer supplied external load for each Hybrid Coupler.

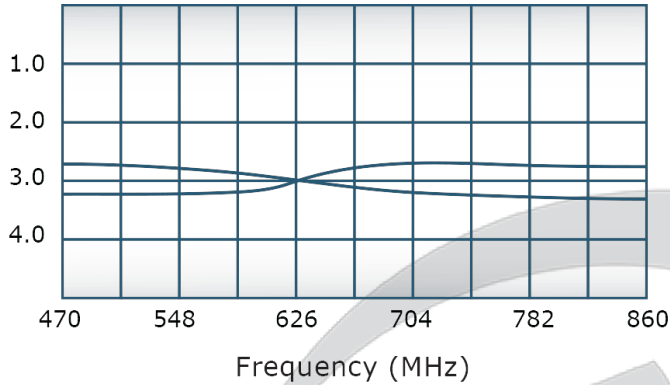
**Restriction on use, duplication, or disclosure of proprietary information.** This document contains proprietary information which is the sole property of Werlatone, Inc.

Werlatone, Inc. 17 Jon Barrett Road Patterson, NY 12563 T:(845)278-2220 F:(845)278-3440 sales@werlatone.com www.werlatone.com

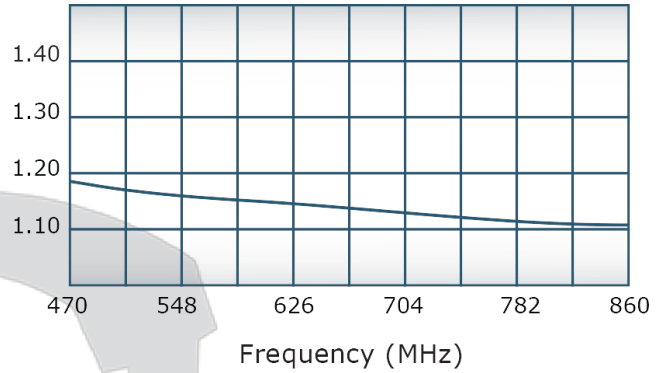


## Performance Data (Specifications subject to change without notice):

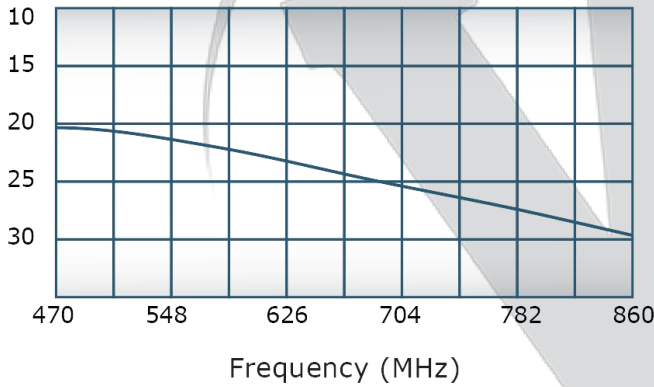
Coupling:



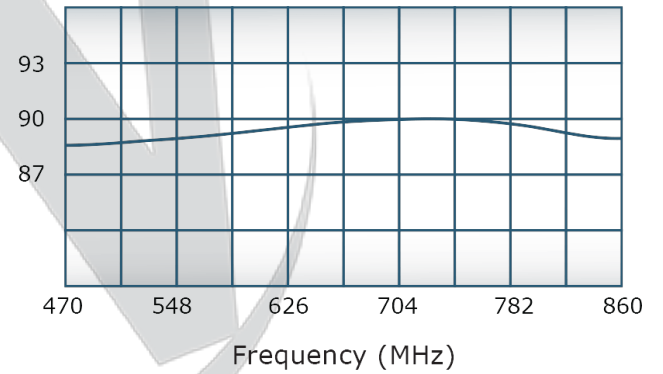
VSWR:



Isolation:



Phase Balance:



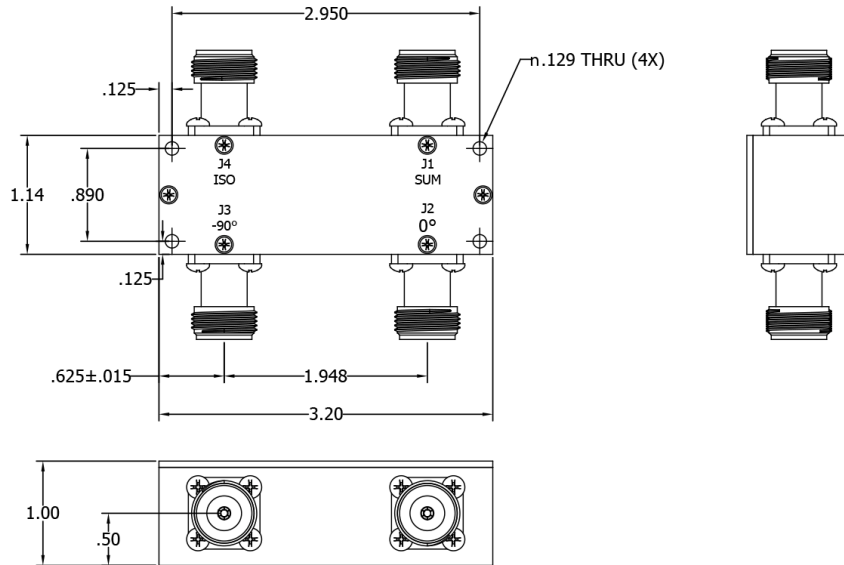
Restriction on use, duplication, or disclosure of proprietary information. This document contains proprietary information which is the sole property of

Werlatone, Inc.

Werlatone, Inc. 17 Jon Barrett Road Patterson, NY 12563 T:(845)278-2220 F:(845)278-3440 sales@werlatone.com www.werlatone.com

**RESTRICTION ON USE, DUPLICATION OR DISCLOSURE OF PROPRIETARY INFORMATION**  
 This document contains proprietary information which is the sole property of Werlatone, Inc.

REVISION HISTORY			
REV	REVISION RECORD	DATE	APPROVED
-	INITIAL RELEASE	3/3/11	BW



UNLESS OTHERWISE SPECIFIED: INTERNET DRAWING IAW ISO-OTD-108 DIMENSIONING PER ASME Y14.5M-2009 ANNOTATIONAL INFO FOR REF ONLY DIMENSIONS ARE IN INCHES DIMENSIONAL LIMITS APPLY BEFORE PROCESSES TOLERANCES: ANGLE = .3 3 PL = .005 2 PL = .015	DRW	DATE	<b>WERLATONE</b>   SINCE 1965 17 Jon Barrett Rd Patterson, NY 12563	REV
	CP	3/3/2011		
	CHK	DATE	TITLE	REV
	NH	3/3/2011		
ENGR	DATE	SIZE	CAGE CODE	DWG NO
APVD	DATE	B	28812	20746-500
QA	DATE	SCALE	1:1	SHEET 1 OF 1
RELE	DATE			

**Restriction on use, duplication, or disclosure of proprietary information.** This document contains proprietary information which is the sole property of Werlatone, Inc.  
 Werlatone, Inc. 17 Jon Barrett Road Patterson, NY 12563 T:(845)278-2220 F:(845)278-3440 sales@werlatone.com www.werlatone.com