
PRODUCT DATA SHEET
QH2597
Our patented 3 dB 90° Hybrid Couplers provide:

- Superior component performance starting at 3:1 Bandwidth.
- Thicker center boards for high power and increased repeatability.
- Bonded structures which eliminate any air gaps between substrates.
- More sections per bandwidth for better coupling flatness.
- Electrically shorter and physically smaller RF components.

Features:

High Power Wide Bandwidths Small Size Connectorized Drop-In & Surface Mount

Electrical Specifications:

Frequency:	225 - 400 MHz
Power:	300 W CW
Insertion Loss:	0.3 dB Max.
VSWR:	1.30:1 Max.
Phase Balance:	90° ± 3° Max.
Amplitude Balance:	± 0.6 dB Max.
Isolation:	20 dB Min.

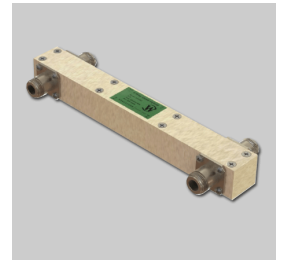
Mechanical Specifications:

Type:	Connectorized
Material:	Aluminum 6061-T6
Surface Finish:	Chem. Film Per MIL-DTL-5541F Type I Class 3 (Yellow Iridite) RoHS Compliant Available
Operating Temperature:	-55°C to +75°C
Storage Temperature:	-60°C to +85°C
Size:	8.0 x 1.0 x 1.0"

Connector Configurations:

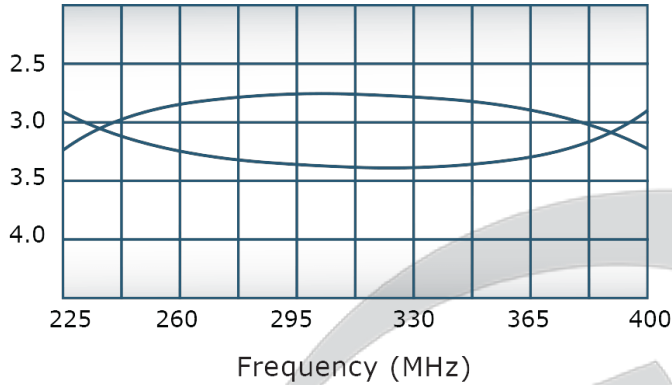
Model	Sum Port (J1)	0°, 90° (J2,J3)	Diff. Port
QH2597-10	N Female	N Female	N Female
QH2597-12	N Female	SMA	SMA
QH2597-102	SMA	SMA	SMA

Werlatone's breakthrough technology allows us to build our existing line of Broadband 3 dB High Power 90° Hybrid Couplers. Connectorized 3 dB 90° Hybrid Coupler models are available with a choice of connectors. Several of our existing High Power 3 dB 90° RF Couplers are three port designs, wherein the difference port is internally terminated with a high power termination. This eliminates the need for a customer supplied external load for each Hybrid Coupler.

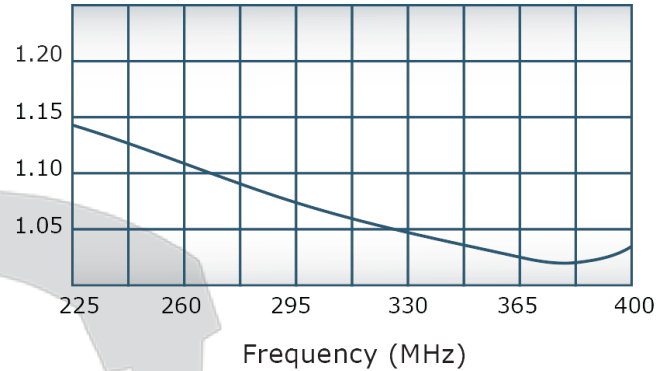


Performance Data (Specifications subject to change without notice):

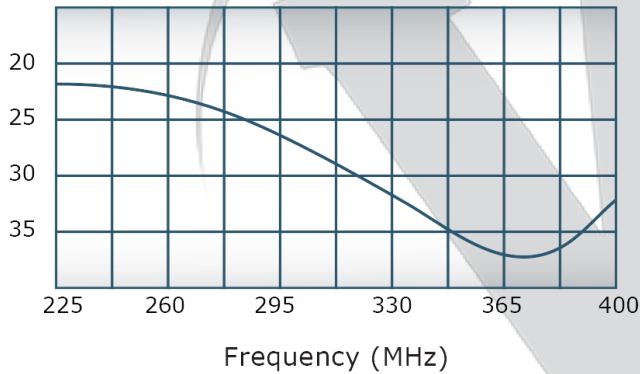
Coupling:



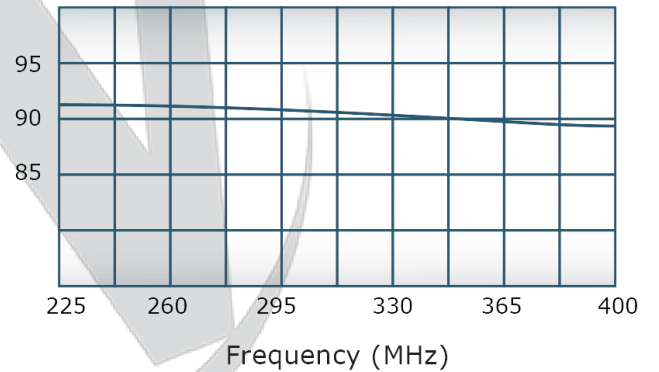
VSWR:

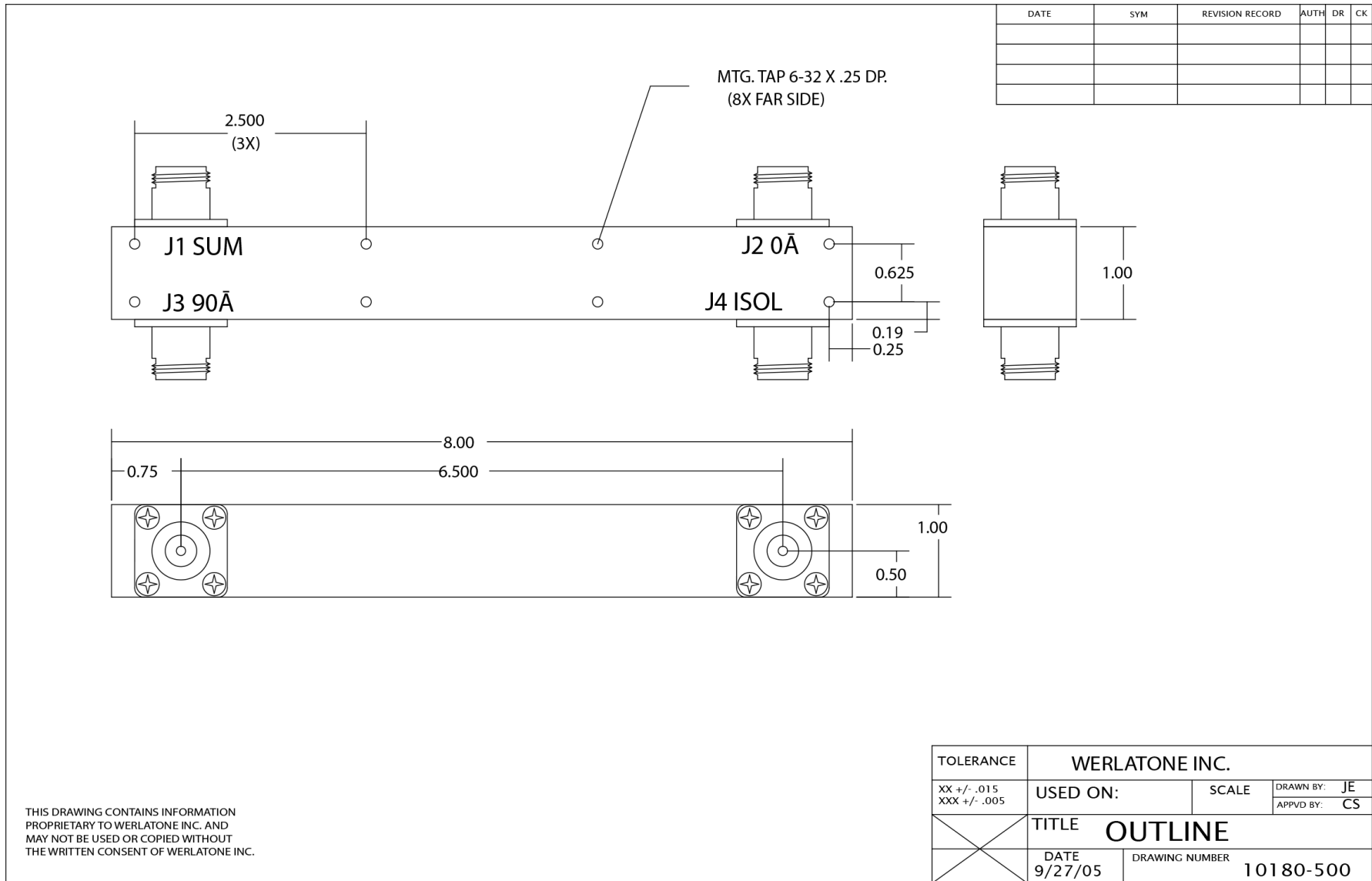


Isolation:



Phase Balance:





Restriction on use, duplication, or disclosure of proprietary information. This document contains proprietary information which is the sole property of Werlatone, Inc. Werlatone, Inc. 17 Jon Barrett Road Patterson, NY 12563 T:(845)278-2220 F:(845)278-3440 sales@werlatone.com www.werlatone.com