
PRODUCT DATA SHEET
H9331

Werlatone® High Power 180° RF Hybrid Combiners/Dividers balance traditional technologies with disruptive microwave techniques. The outcome is a microwave component which provides an order of magnitude improvement over current capabilities. Our newest line of high power, patented 180° RF Hybrid Combiners/Dividers provides an incredible 5:1 bandwidth, while exhibiting exceptionally low loss and superior port-to-port isolation.

Features:

High Power Wide Bandwidths Small Size Excellent Amplitude Balance

Electrical Specifications:

Frequency: 350 - 1000 MHz
 Power: 150 W CW
 Insertion Loss: 0.3 dB Max.
 VSWR: 1.30:1 Max.
 Phase Balance: 180° ± 7° Max.
 Amplitude Balance: ± 0.4 dB Max.
 Isolation: 18 dB Min.

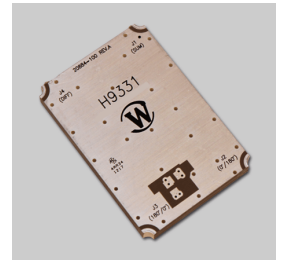
Mechanical Specifications:

Type: Connectorized
 Material: Aluminum 6061-T6
 Surface Finish: Chem. Film Per MIL-DTL-5541F Type II
 Class 3 (RoHS Compliant)
 Operating Temperature: -55°C to +75°C
 Storage Temperature: -60°C to +85°C
 Size: 1.8 x 2.6 x 0.28"

Port Configurations:

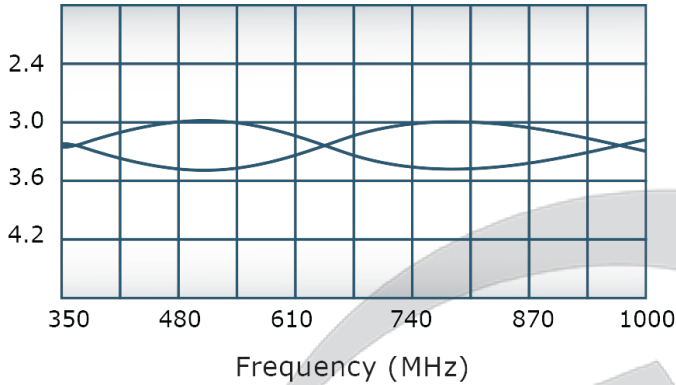
Model	J1	J2, J3	J4
H9792-10	Sum Port	0°, 180°	Diff. Port

Werlatone's standard line of High Power 180° RF Hybrid Combiners/Dividers covers multiple octaves within a microwave device. Low frequency 180° Hybrid Combiner/Dividers employ proprietary ferrite transmission line techniques, similar to our 0° Combiners/Dividers. Insertion loss in both sum and difference ports is minimal, allowing the hybrid to handle high power over its frequency range. Custom requirements are welcome.

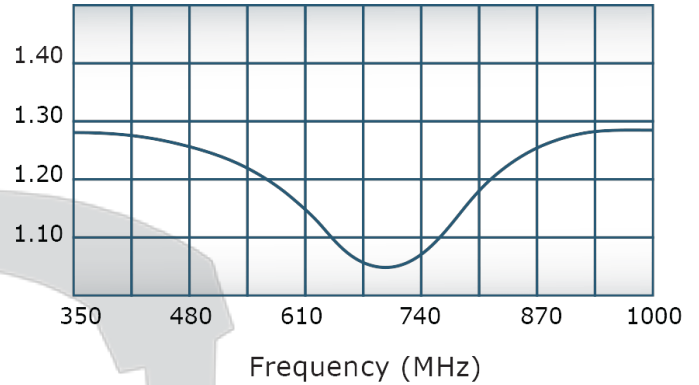


Performance Data (Specifications subject to change without notice):

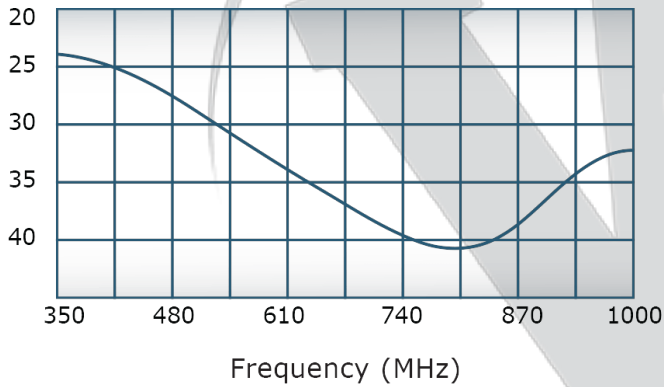
Coupling:



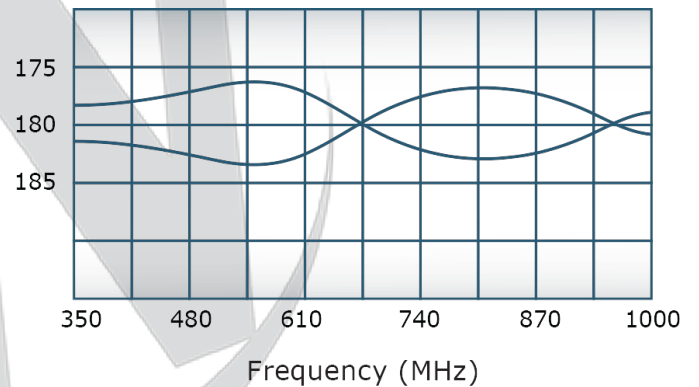
VSWR:



Isolation:



Phase Balance:



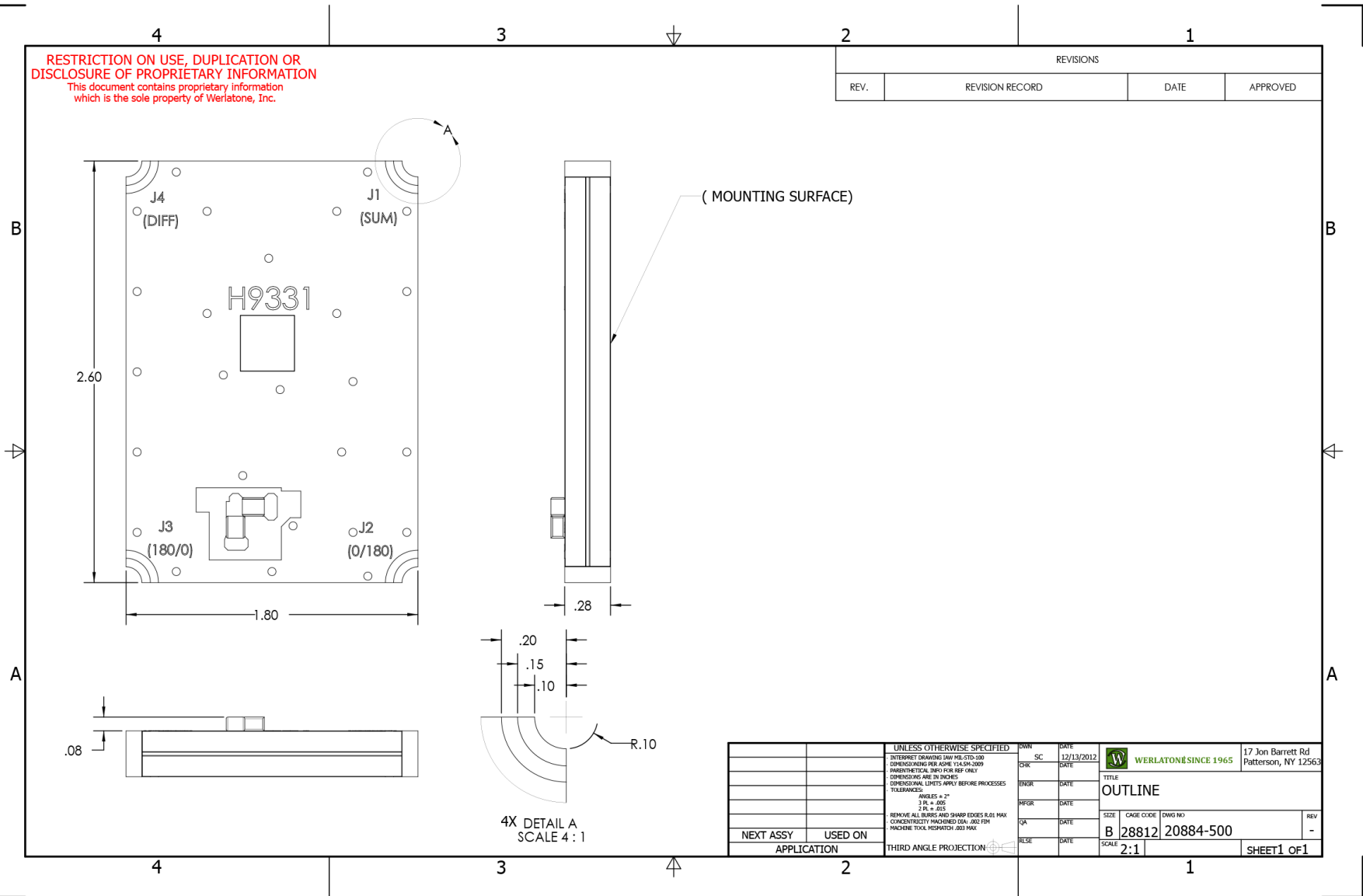
Restriction on use, duplication, or disclosure of proprietary information. This document contains proprietary information which is the sole property of

Werlatone, Inc.

Werlatone, Inc. 17 Jon Barrett Road Patterson, NY 12563 T:(845)278-2220 F:(845)278-3440 sales@werlatone.com www.werlatone.com

RESTRICTION ON USE, DUPLICATION OR DISCLOSURE OF PROPRIETARY INFORMATION
 This document contains proprietary information which is the sole property of Werlatone, Inc.

REVISIONS			
REV.	REVISION RECORD	DATE	APPROVED



4X DETAIL A
 SCALE 4:1

UNLESS OTHERWISE SPECIFIED		OWN	DATE	 WERLATONE SINCE 1965	17 Jon Barrett Rd Patterson, NY 12563
INTERPRET DRAWING IN ACCORDANCE WITH MIL-STD-100		SC	12/13/2012		
DIMENSIONS ARE IN INCHES		CHK	DATE	TITLE	
DIMENSIONS ARE IN MILLIMETERS		ENGR	DATE	OUTLINE	
DIMENSIONAL LIMITS APPLY BEFORE PROCESSES		MPGR	DATE	SIZE	CAGE CODE
TOLERANCES:		QA	DATE	B	28812
ANGLES = 3°		RELE	DATE	DWG NO	20884-500
3 PL ± .015		THIRD ANGLE PROJECTION		SCALE	2:1
REMOVE ALL BURRS AND SHARP EDGES R.01 MAX		APPLICATION		REV	-
CONCENTRICITY FINISHED DIA - .002 FIM		NEXT ASSY USED ON		SHEET 1 OF 1	
MACHINE TOOL MESHATCH .003 MAX		APPLICATION			

Restriction on use, duplication, or disclosure of proprietary information. This document contains proprietary information which is the sole property of Werlatone, Inc.
 Werlatone, Inc. 17 Jon Barrett Road Patterson, NY 12563 T:(845)278-2220 F:(845)278-3440 sales@werlatone.com www.werlatone.com