
PRODUCT DATA SHEET
H9395R

Werlatone® High Power 180° RF Hybrid Combiners/Dividers balance traditional technologies with disruptive microwave techniques. The outcome is a microwave component which provides an order of magnitude improvement over current capabilities. Our newest line of high power, patented 180° RF Hybrid Combiners/Dividers provides an incredible 5:1 bandwidth, while exhibiting exceptionally low loss and superior port-to-port isolation.

Features:

High Power Wide Bandwidths Small Size Excellent Amplitude Balance

Electrical Specifications:

Frequency: 350 - 1000 MHz
 Power: 250 W CW
 Insertion Loss: 0.3 dB Max.
 VSWR: 1.30:1 Max.
 Phase Balance: 180° ± 7° Max.
 Amplitude Balance: ± 0.4 dB Max.
 Isolation: 20 dB Min.

Mechanical Specifications:

Type: Connectorized
 Material: Aluminum 6061-T6
 Surface Finish: Chem. Film Per MIL-DTL-5541F Type II
 Class 3 (RoHS Compliant)
 Operating Temperature: -55°C to +75°C
 Storage Temperature: -60°C to +85°C
 Size: 3.5 x 4.28 x 1.06"

Connector Configurations:

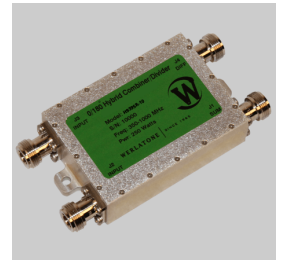
Model	Sum Port (J1)	Inputs/Outputs (J2,J3)	Diff. Port (J4)
H9395R-10	N Female	N Female	N Female

"R" references a fully RoHS Compliant Design

Werlatone's standard line of High Power 180° RF Hybrid Combiners/Dividers covers multiple octaves within a microwave device. Low frequency 180° Hybrid Combiner/Dividers employ proprietary ferrite transmission line techniques, similar to our 0° Combiners/Dividers. Insertion loss in both sum and difference ports is minimal, allowing the hybrid to handle high power over its frequency range. Custom requirements are welcome.

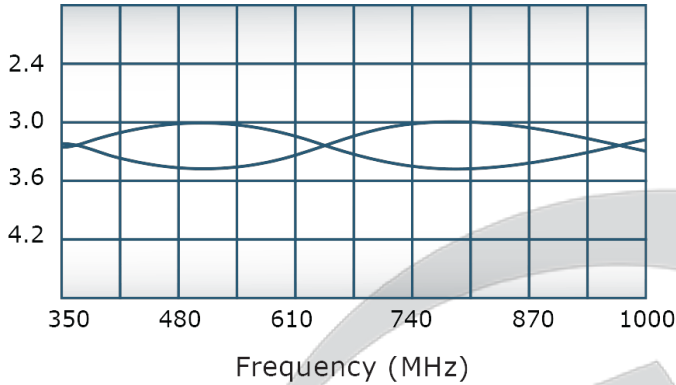
Restriction on use, duplication, or disclosure of proprietary information. This document contains proprietary information which is the sole property of Werlatone, Inc.

Werlatone, Inc. 17 Jon Barrett Road Patterson, NY 12563 T:(845)278-2220 F:(845)278-3440 sales@werlatone.com www.werlatone.com

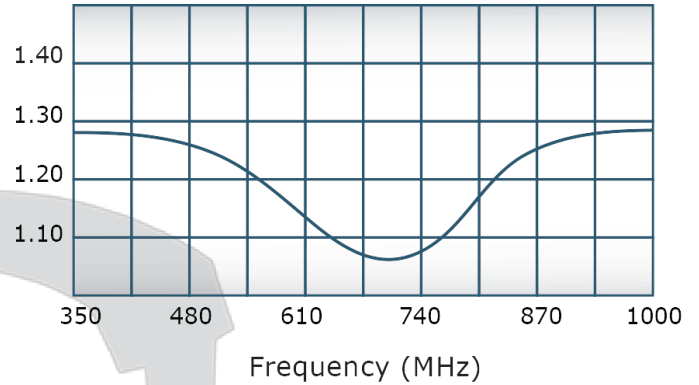


Performance Data (Specifications subject to change without notice):

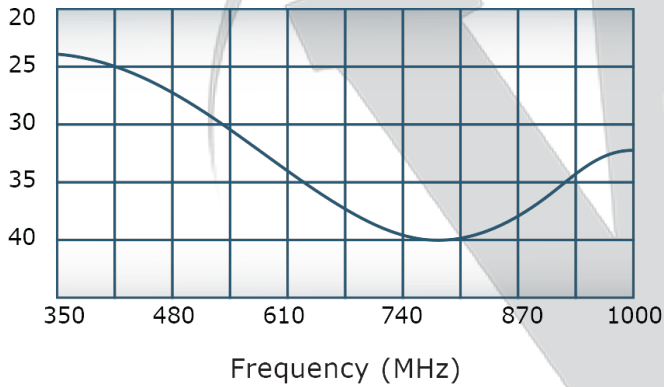
Coupling:



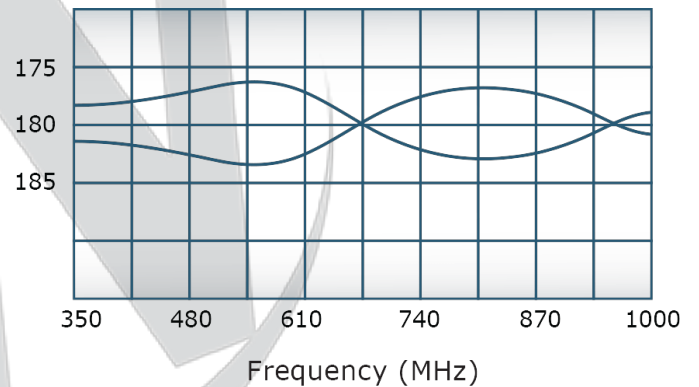
VSWR:



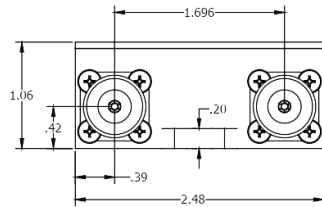
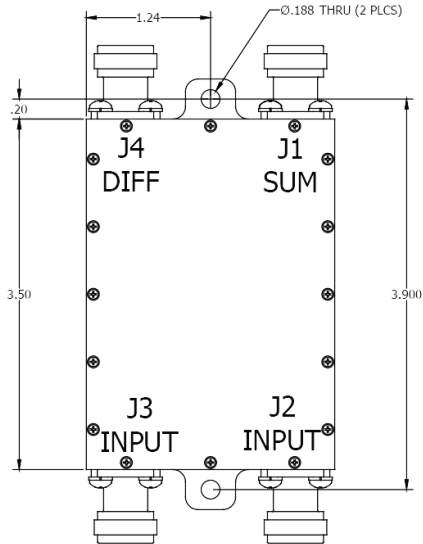
Isolation:



Phase Balance:



RESTRICTION ON USE, DUPLICATION OR DISCLOSURE OF PROPRIETARY INFORMATION
 This document contains proprietary information which is the sole property of Werlatone, Inc.



NOTES: UNLESS OTHERWISE SPECIFIED

- MAT'L: ALUMINUM 6061-T6
- FINISH: CHEM FILM PER-DTL-5541F TYPE 2 CLASS 3 (RoHS COMPLIANT)
- CONNECTORS: N (FEMALE)

	A	B	C	D
1	REVISION HISTORY			
2	REV	REVISION RECORD	DATE	APPROVED
3	-	INITIAL RLS	5/23/2012	BW
4				
5				
6				

UNLESS OTHERWISE SPECIFIED		DWN	DATE	WERLATONE SINCE 1965	17 Jon Barrett Rd Patterson, NY 12563	
• INTERPRET DRAWING IAW MIL-STD-100	• DIMENSIONING PER ASME Y14.5M-2009	NH	05/23/12			
• PARENTHESES INFO FOR REF ONLY	• DIMENSIONS ARE IN INCHES	CHK	DATE	TITLE		
• DIMENSIONAL LIMITS APPLY BEFORE PROCESSES	• TOLERANCES: ANGLES ± 2°	BW	05/23/12	OUTLINE		
	3 PL ± .005	ENGR	DATE	SIZE	CAGE CODE	DWG NO
	2 PL ± .015	BW	05/23/12	A	28812	20904-500
		MFGR	DATE	SCALE	REV	
		QA	DATE	1:2	-	
		RLSE	DATE	SHEET 1 OF 1		
THIRD ANGLE PROJECTION						

Restriction on use, duplication, or disclosure of proprietary information. This document contains proprietary information which is the sole property of Werlatone, Inc.
 Werlatone, Inc. 17 Jon Barrett Road Patterson, NY 12563 T:(845)278-2220 F:(845)278-3440 sales@werlatone.com www.werlatone.com