
**PRODUCT DATA SHEET**
**H9395**

**Werlatone®** High Power 180° RF Hybrid Combiners/Dividers balance traditional technologies with disruptive microwave techniques. The outcome is a microwave component which provides an order of magnitude improvement over current capabilities. Our newest line of high power, patented 180° RF Hybrid Combiners/Dividers provides an incredible 5:1 bandwidth, while exhibiting exceptionally low loss and superior port-to-port isolation.

**Features:**

High Power      Wide Bandwidths      Small Size      Excellent Amplitude Balance

**Electrical Specifications:**

Frequency:            350 - 1000 MHz  
 Power:                250 W CW  
 Insertion Loss:      0.3 dB Max.  
 VSWR:                1.30:1 Max.  
 Phase Balance:      180° ± 7° Max.  
 Amplitude Balance: ± 0.4 dB Max.  
 Isolation:            20 dB Min.

**Mechanical Specifications:**

Type:                    Connectorized  
 Material:              Aluminum 6061-T6  
 Surface Finish:      Chem. Film Per MIL-DTL-5541F Type I Class 3 (Yellow Iridite) RoHS Compliant Available  
 Operating Temperature: -55°C to +75°C  
 Storage Temperature: -60°C to +85°C  
 Size:                    3.5 x 4.28 x 1.06"

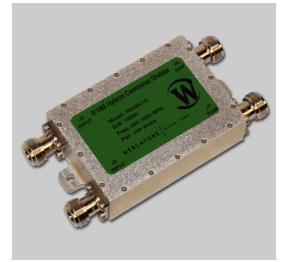
**Connector Configurations:**

Model	Sum Port (J1)	Inputs/Outputs (J2,J3)	Diff. Port (J4)
H9395-10	N Female	N Female	N Female

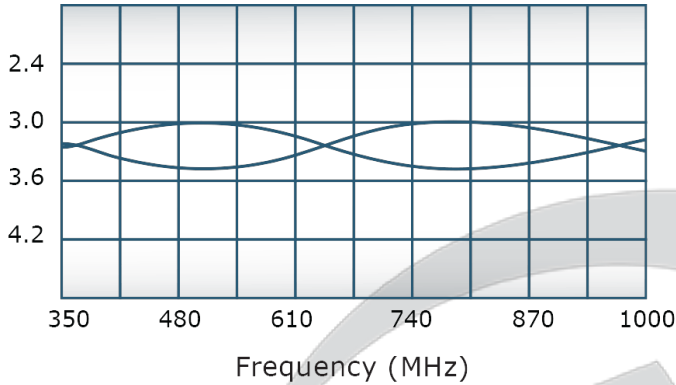
**Werlatone's** standard line of High Power 180° RF Hybrid Combiners/Dividers covers multiple octaves within a microwave device. Low frequency 180° Hybrid Combiner/Dividers employ proprietary ferrite transmission line techniques, similar to our 0° Combiners/Dividers. Insertion loss in both sum and difference ports is minimal, allowing the hybrid to handle high power over its frequency range. Custom requirements are welcome.

**Restriction on use, duplication, or disclosure of proprietary information.** This document contains proprietary information which is the sole property of Werlatone, Inc.

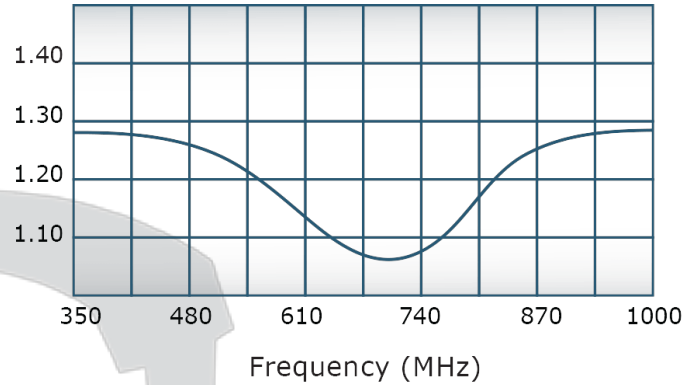
Werlatone, Inc. 17 Jon Barrett Road Patterson, NY 12563 T:(845)278-2220 F:(845)278-3440 sales@werlatone.com www.werlatone.com


**Performance Data (Specifications subject to change without notice):**

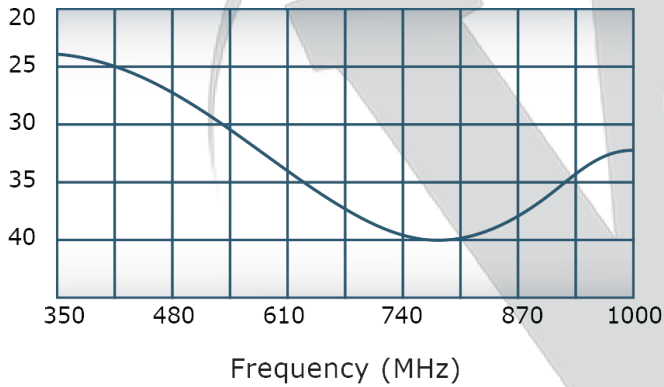
Coupling:



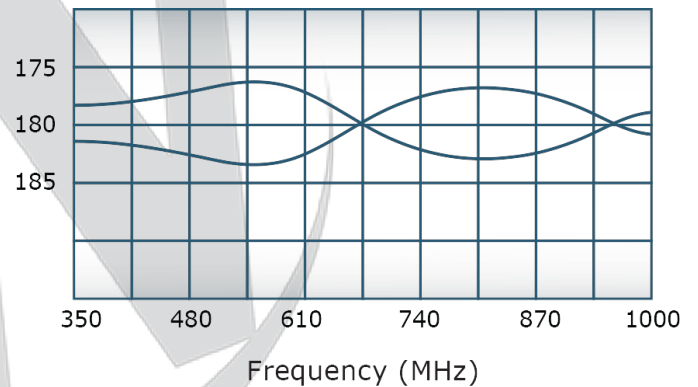
VSWR:



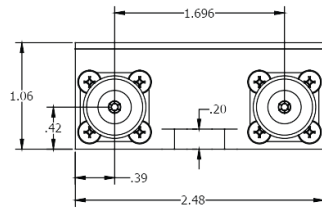
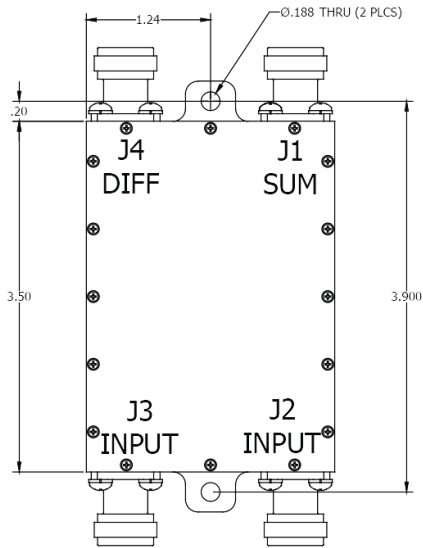
Isolation:



Phase Balance:



**RESTRICTION ON USE, DUPLICATION OR DISCLOSURE OF PROPRIETARY INFORMATION**  
 This document contains proprietary information which is the sole property of Werlatone, Inc.



**NOTES: UNLESS OTHERWISE SPECIFIED**

- MAT'L: ALUMINUM 6061-T6
- FINISH: CHEM FILM PER-DTL-5541F TYPE 1 CLASS 3 (YELLOW IRIDITE)
- CONNECTORS: N (FEMALE)

	A	B	C	D
1	REVISION HISTORY			
2	REV	REVISION RECORD	DATE	APPROVED
3	-	INITIAL RLS	5/23/2012	BW
4				
5				
6				

UNLESS OTHERWISE SPECIFIED		DWN	DATE	<b>WERLATONE   SINCE 1965</b> 17 Jon Barrett Rd Patterson, NY 12563
<ul style="list-style-type: none"> <li>INTERPRET DRAWING IAW MIL-STD-100</li> <li>DIMENSIONING PER ASME Y14.5M-2009</li> <li>PARENTHESES INFO FOR REF ONLY</li> <li>DIMENSIONS ARE IN INCHES</li> <li>DIMENSIONAL LIMITS APPLY BEFORE PROCESSES</li> </ul>	NH	05/23/12		
	CHK	BW	05/23/12	TITLE
	ENGR	BW	05/23/12	<b>OUTLINE</b>
	MFGR	QA	RLSE	DATE
				DATE
		SIZE	CAGE CODE	DWG NO
		A	28812	20904-500
		SCALE	1:2	REV
				-
THIRD ANGLE PROJECTION				SHEET 1 OF 1

Restriction on use, duplication, or disclosure of proprietary information. This document contains proprietary information which is the sole property of Werlatone, Inc.  
 Werlatone, Inc. 17 Jon Barrett Road Patterson, NY 12563 T:(845)278-2220 F:(845)278-3440 sales@werlatone.com www.werlatone.com