

Werlatone[®], Inc.

17 Jon Barrett Road Patterson, New York 12563
T (845) 278 2220 www.werlatone.com
F (845) 278 3440 sales@werlatone.com

Werlatone's QH7644 is a high performance, broadband, 3 dB 90° Hybrid Coupler that operates from 0.5 GHz to 2.5 GHz at 150 Watts CW. The QH7644 is ideally suited for use in balanced amplifiers and features very tight amplitude balance, low insertion loss and high isolation.

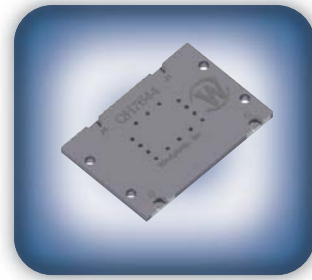
The QH7644 is a drop-in style stripline assembly. It can easily be installed into a RF/Microwave PCB assembly. RF connection to the four ports is established by soldering a lead to the four exposed traces.

Highlights:

- 5:1 Bandwidth
- Drop-In Package
- Low Loss
- High Isolation
- Available in multiple RoHS Surface Finishes

Notes

- All specifications guaranteed
- * Insertion loss specified at +25°C
- Test data provided with each unit shipped
- Mount coupler flush with heatsink
- Stripline structure has exposed copper lands. PCB must have a cutout to accommodate part. Align 50 Ohm lands with 0.10" exposed land and make solder joint with lead (not supplied).
- Surface Finish Options:
QH7644-Ag: Immersion Silver (RoHS)
QH7644-Au: ENIG (RoHS)
QH7644-PSn: Immersion Tin (RoHS)

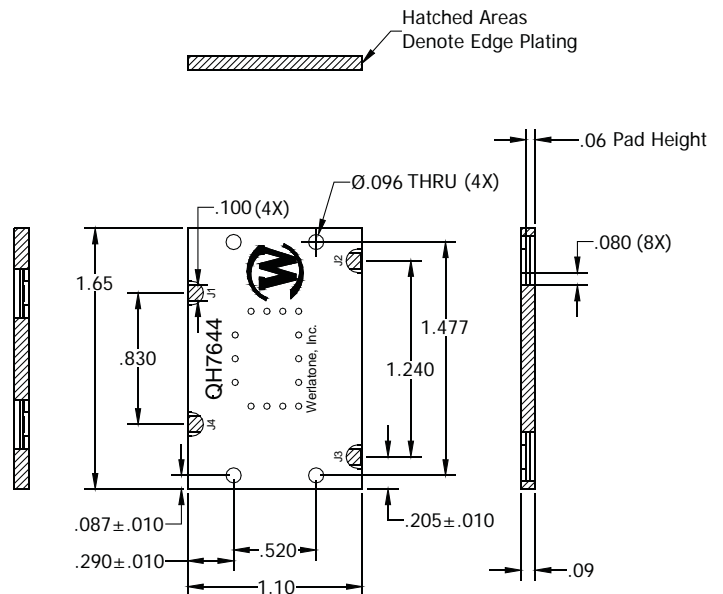


90° Hybrid Coupler
Model QH7644

Frequency:	500 - 2500 MHz
Power:	150 W CW
Insertion Loss:	0.55 dB Max.*
VSWR:	1.35:1 Max.
Isolation:	19 dB Min.
Phase Balance:	± 5° Max
Amplitude Balance:	± 0.6 dB Max.

Port Configurations

J1	J2	J3	J4
Sum (Σ)	-3 dB ∠θ	-3 dB ∠θ -90	Isolated (Δ)
-3 dB ∠θ	Sum (Σ)	Isolated (Δ)	-3 dB ∠θ -90
-3 dB ∠θ -90	Isolated (Δ)	Sum (Σ)	-3 dB ∠θ
Isolated (Δ)	-3 dB ∠θ -90	-3 dB ∠θ	Sum (Σ)





DECADES AHEAD[®]
high power RF devices

Werlatone[®], Inc.

17 Jon Barrett Road Patterson, New York 12563

T (845) 278 2220

www.werlatone.com

F (845) 278 3440

sales@werlatone.com

Typical Performance

