



DECADES AHEAD[®]
high power RF devices

Werlatone[®], Inc.

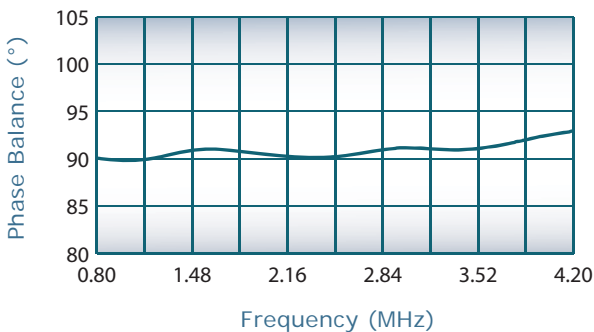
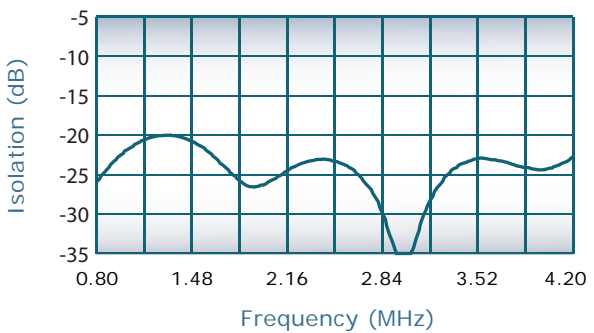
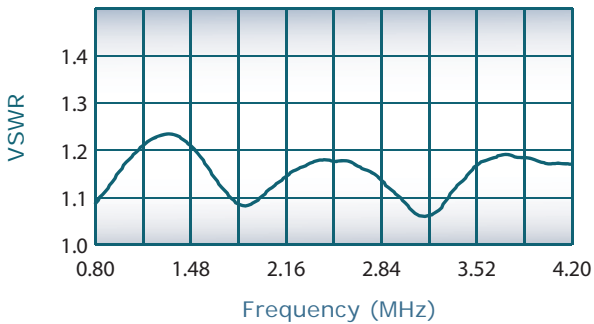
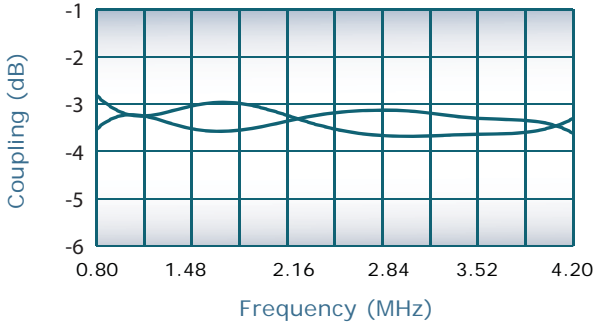
17 Jon Barrett Road Patterson, New York 12563
T (845) 278 2220 www.werlatone.com
F (845) 278 3440 sales@werlatone.com



90° Hybrid Coupler

Model QH8105

| | |
|--------------------|---------------|
| Frequency: | 0.8 - 4.2 GHz |
| Power: | 150 W CW |
| Insertion Loss: | 0.55 dB Max. |
| VSWR: | 1.35: 1 Max. |
| Isolation: | 18 dB Min. |
| Phase Balance: | 90° ± 5° Max. |
| Amplitude Balance: | ± 0.5 dB Max. |

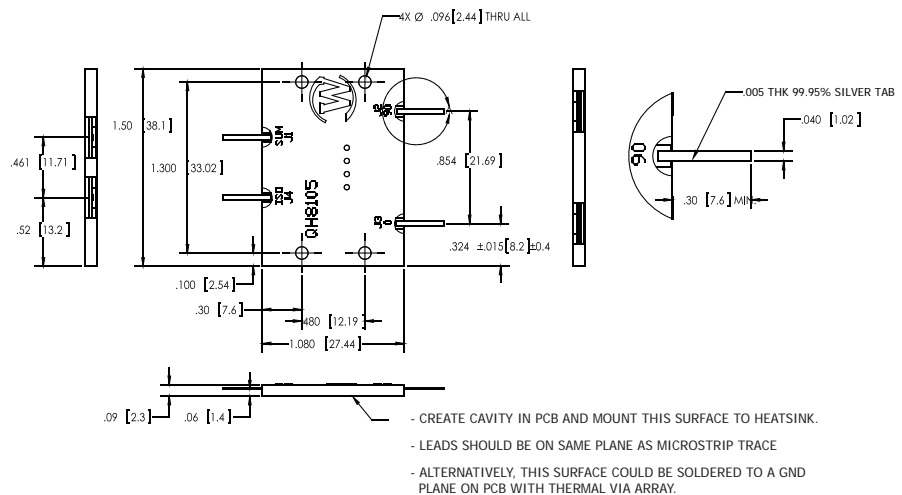


Notes

- All specifications guaranteed
- Test data provided with each unit shipped
- Operating Temperature: -55°C to +75°C
- Plating Options: QH8105-Pb: Electrodeposited Tin/Lead
QH8105-Sn: Immersion Tin
QH8105-Ag: Immersion Silver
QH8105-Au: ENIG
- Unit Supplied as Drop-In or with Tabs

Port Configuration

| J1 | J2 | J3 | J4 |
|----------|----------|---------|---------------|
| Sum Port | 90° Port | 0° Port | Isolated Port |



Specifications subject to change without notice



Send Us Your Specs for Custom Designs