



DECADES AHEAD[®]
high power RF devices

Werlatone[®], Inc.

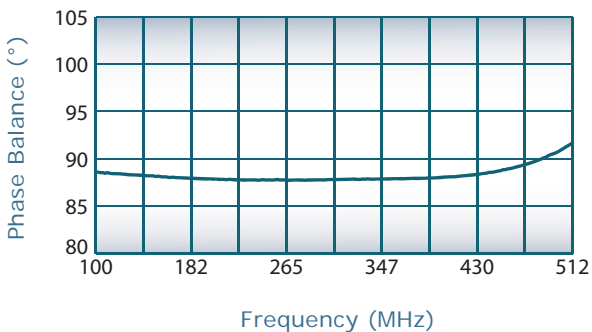
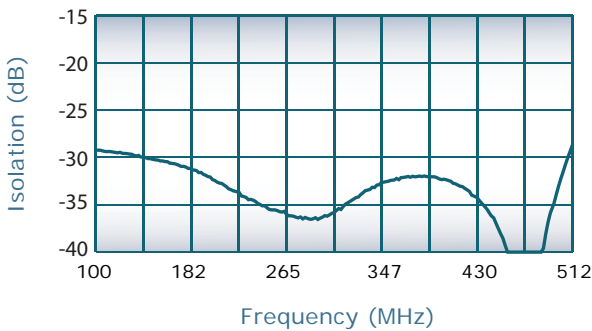
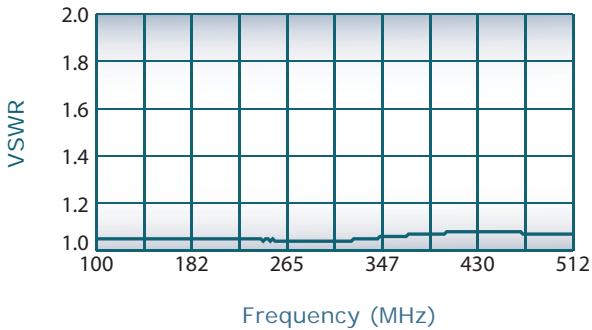
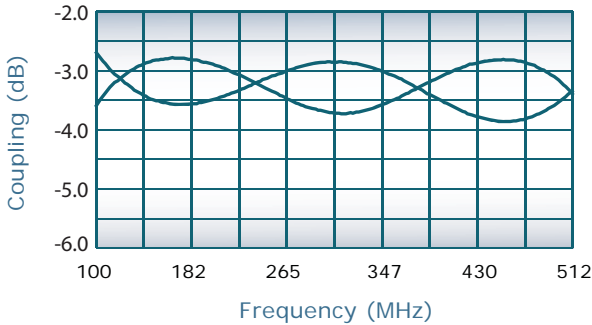
17 Jon Barrett Road Patterson, New York 12563
T (845) 278 2220 www.werlatone.com
F (845) 278 3440 sales@werlatone.com



90° Hybrid Coupler

Model QH8100

Frequency:	100 - 512 MHz
Power:	250 W CW
Insertion Loss:	0.45 dB Max.
VSWR:	1.30: 1 Max.
Isolation:	20 dB Min.
Phase Balance:	90° ± 5° Max.
Amplitude Balance:	± 0.5 dB Max.

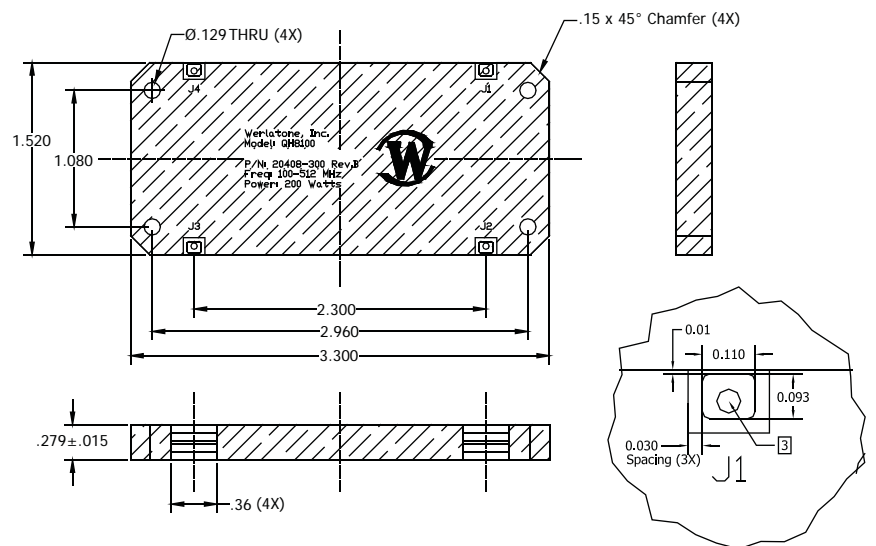


Notes

- All specifications guaranteed
- Test data provided with each unit shipped
- Operating Temperature: -55°C to +75°C
- Hatched Areas Denote Metallization
- Plating Options: QH8100-Pb: Electrodeposited Tin/Lead
QH8100-Sn: Immersion Tin
QH8100-Ag: Immersion Silver
QH8100-Au: ENIG
- 0.05 PTH with controlled depth counterbore from opposite surface
- Connectorized version available, Model QH7816

Port Configuration

J1	J2	J3	J4
Sum Port	90° Port	0° Port	Isolated Port



DETAIL A (4X)

