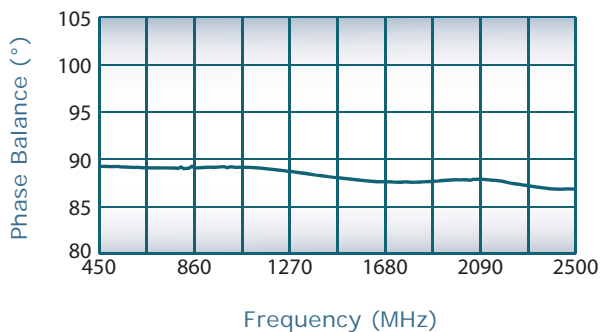
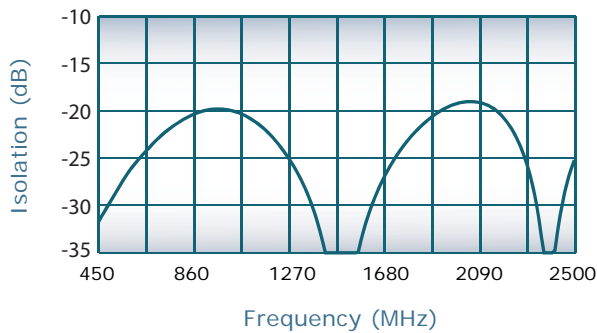
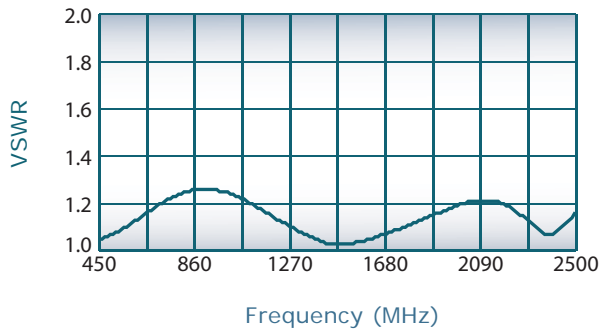
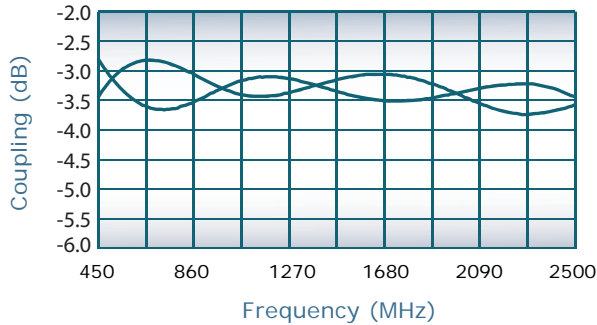




DECADES AHEAD[®]
high power RF devices

Werlatone[®], Inc.

17 Jon Barrett Road Patterson, New York 12563
T (845) 278 2220 www.werlatone.com
F (845) 278 3440 sales@werlatone.com



Specifications subject to change without notice

90° Hybrid Coupler

Model QH7862

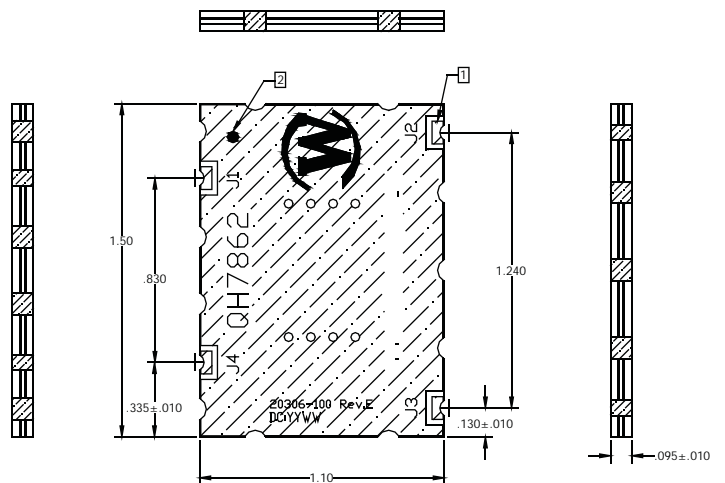
Frequency:	450 - 2500 MHz
Power:	125 W CW
Insertion Loss:	0.5 dB Max.
VSWR:	1.30: 1 Max.
Isolation:	18 dB Min.
Phase Balance:	90° ± 5° Max.
Amplitude Balance:	± 0.45 dB Max.

Notes

- All specifications guaranteed
- Test data provided with each unit shipped
- Operating Temperature: -55°C to +75°C
- Ports (4x) are 0.080 Plated Castellations (4x)
- 0.050 Printed Fiducial for Orientation
- Hatched Areas Denote Metallization
- SMT Component. Reference tech note for mounting recommendations.
- Plating Options: QH7862-Pb: Electrodeposited Tin/Lead
QH7862-Sn: Immersion Tin
QH7862-Ag: Immersion Silver
QH7862-Au: ENIG
- Connectorized version available, Model QH7644

Port Configuration

J1	J2	J3	J4
Sum Port	90° Port	0° Port	Isolated Port



Send Us Your Specs for Custom Designs