



DECADES AHEAD[®]
high power RF devices

Werlatone[®], Inc.

17 Jon Barrett Road Patterson, New York 12563
T (845) 278 2220 www.werlatone.com
F (845) 278 3440 sales@werlatone.com



90° Hybrid Coupler

Model QH7819

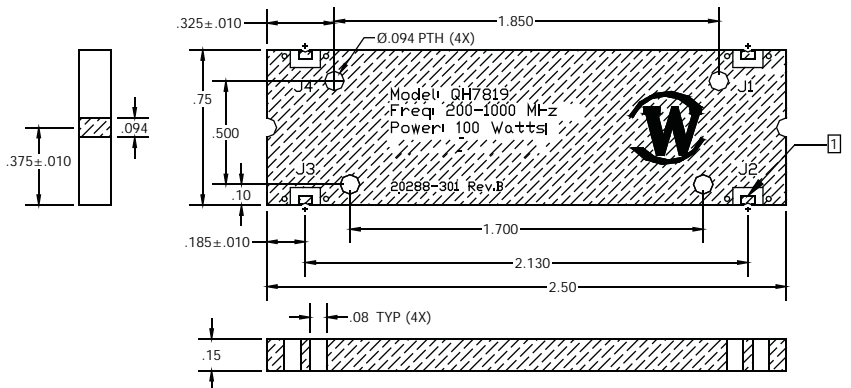
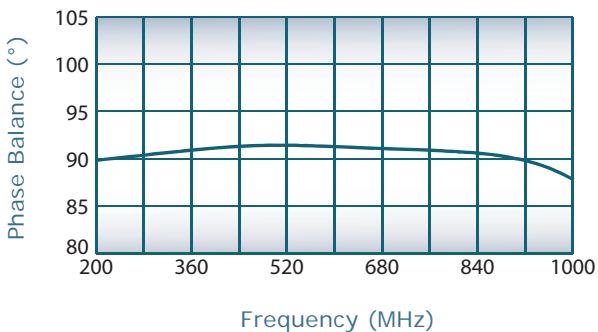
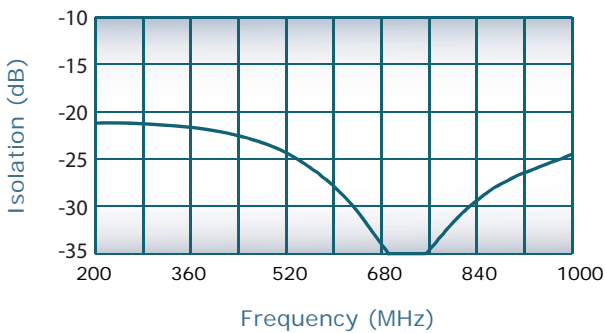
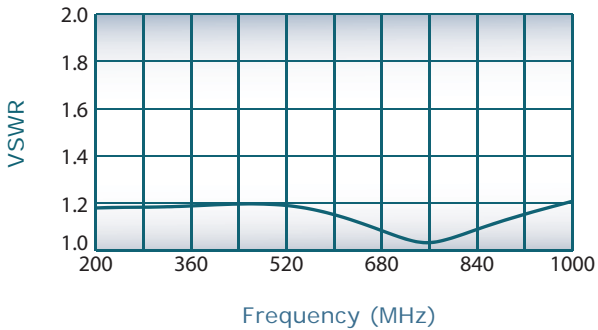
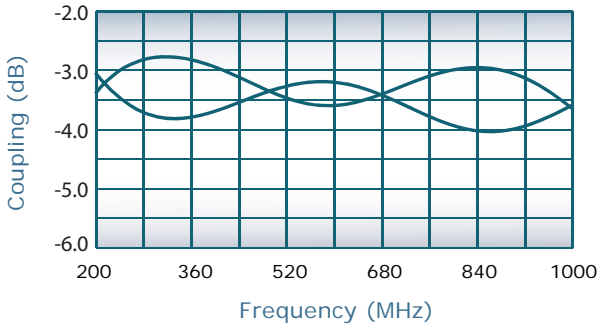
Frequency:	200 - 1000 MHz
Power:	100 W CW
Insertion Loss:	0.6 dB Max.
VSWR:	1.35: 1 Max.
Isolation:	20 dB Min.
Phase Balance:	90° ± 5° Max.
Amplitude Balance:	± 0.55 dB Max.

Notes

- All specifications guaranteed
- Test data provided with each unit shipped
- 0.030 Plated Castellation (4x)
- Hatched Areas Denote Metallization
- SMT Component. Reference tech note for mounting recommendations.
- Plating Options: QH7819-Pb: Electrodeposited Tin/Lead
QH7819-Sn: Immersion Tin
QH7819-Ag: Immersion Silver
QH7819-Au: ENIG
- Connectorized version available, Model QH7785

Port Configuration

J1	J2	J3	J4
Sum Port	90° Port	0° Port	Isolated Port



Specifications subject to change without notice



Send Us Your Specs for Custom Designs