



DECADES AHEAD[®]
high power RF devices

Werlatone[®], Inc.

17 Jon Barrett Road Patterson, New York 12563
T (845) 278 2220 www.werlatone.com
F (845) 278 3440 sales@werlatone.com

90° Hybrid Coupler

Model QH11113

Frequency: 600 - 4000 MHz

Power: 150 W CW

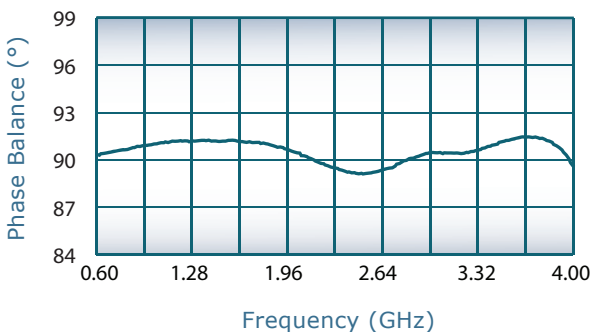
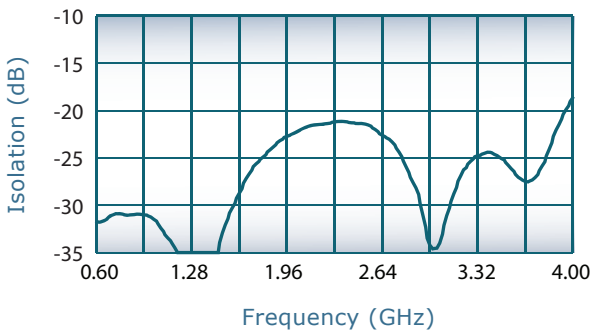
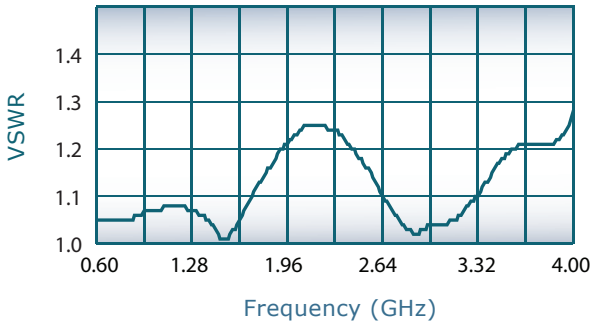
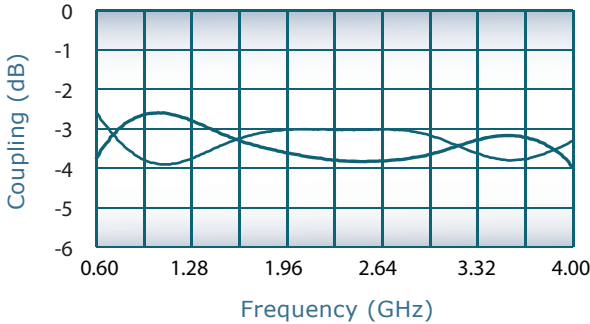
Insertion Loss: 0.5 dB Max.

VSWR: 1.40:1 Max.

Isolation: 17 dB Min.

Phase Balance: 90° ± 5° Max.

Amplitude Balance: ± 0.7 dB Max.

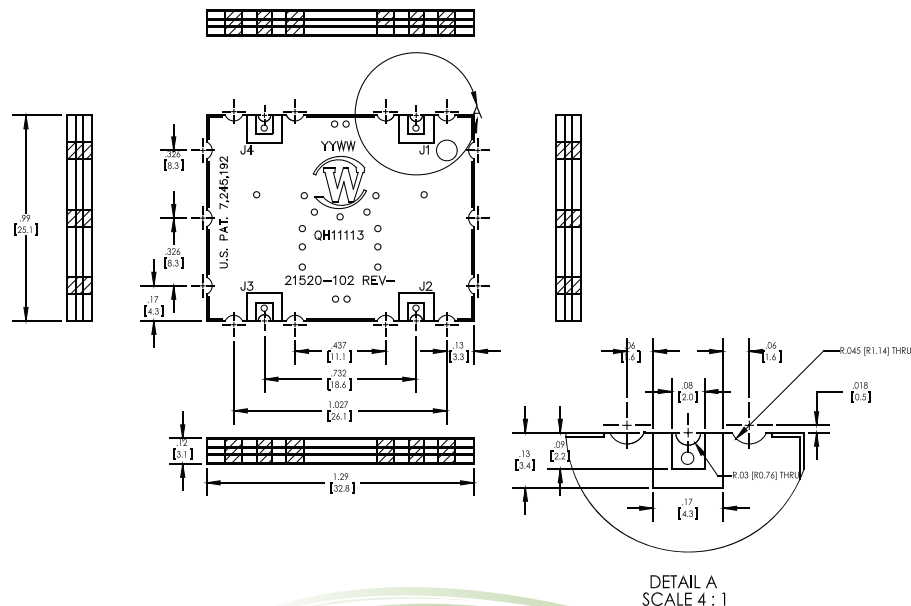


Notes

- All specifications guaranteed
- Operating Temperature: -55°C to +75°C
- Surface Mount Design
- Surface Finish: Immersion Silver (RoHS Compliant). Other Surface Finish Options Available Upon Request
- See Surface Mount Tech Note for Installation Guidelines

Port Configurations

| J1 | J2 | J3 | J4 |
|-------------|-------------|-------------|-------------|
| Input | -3 dB, 0° | -3 dB, -90° | Isolated |
| -3 dB, 0° | Input | Isolated | -3 dB, -90° |
| -3 dB, -90° | Isolated | Input | -3 dB, 0° |
| Isolated | -3 dB, -90° | -3 dB, 0° | Input |



Specifications subject to change without notice



Send Us Your Specs for Custom Designs