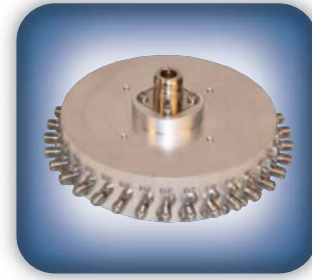




**DECADES AHEAD<sup>®</sup>**  
high power RF devices

**Werlatone<sup>®</sup>, Inc.**

17 Jon Barrett Road Patterson, New York 12563  
T (845) 278 2220      www.werlatone.com  
F (845) 278 3440      sales@werlatone.com



## 32-Way *Radial* Combiner/Divider

### Model D9559

Frequency: 2200 - 2750 MHz

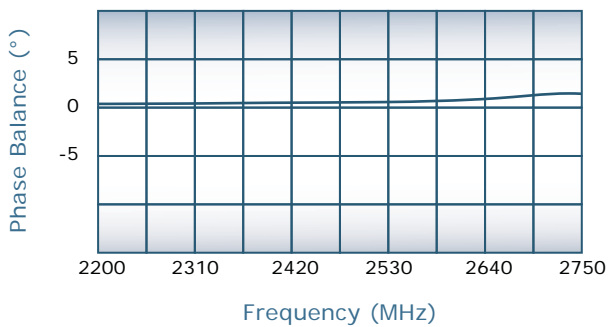
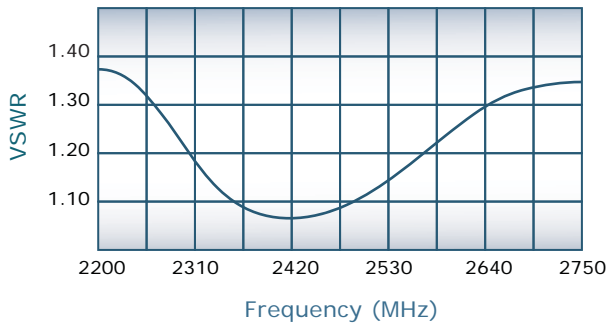
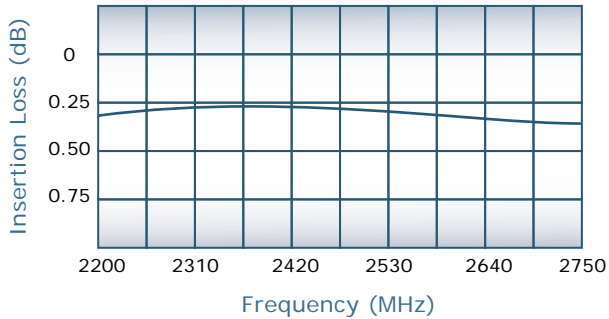
Power: 40 W CW

Insertion Loss: 0.4 dB Max.

VSWR: 1.40:1 Max.

Phase Balance:  $\pm 4^\circ$  Max.

Amplitude Balance: 0.25 dB Max.

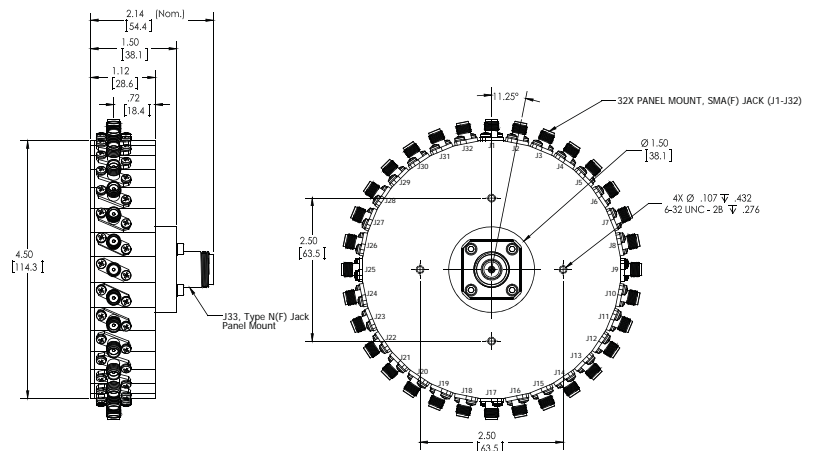


#### Notes

- All specifications guaranteed
- Test data provided with each unit shipped
- Weight: 1.5 Pounds
- Alternate connector configurations upon request

#### Connector Configurations

Model	J33 (Sum Port)	J1-J32 (Input/Output)
D9559-10	N Female	N Female
D9559-12	N Female	SMA
D9559-102	SMA	SMA



**SINCE 1965**

