



**DECADES AHEAD<sup>®</sup>**  
**high power RF devices**

**Werlatone<sup>®</sup>, Inc.**

17 Jon Barrett Road Patterson, New York 12563  
 T (845) 278 2220      www.werlatone.com  
 F (845) 278 3440      sales@werlatone.com



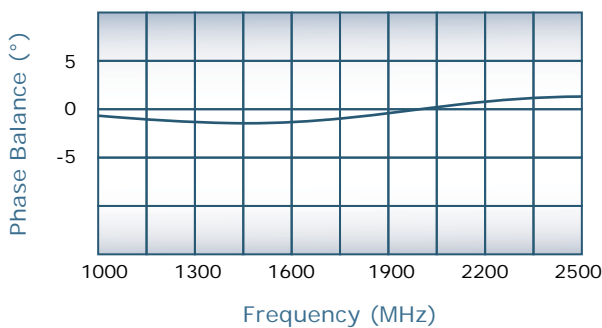
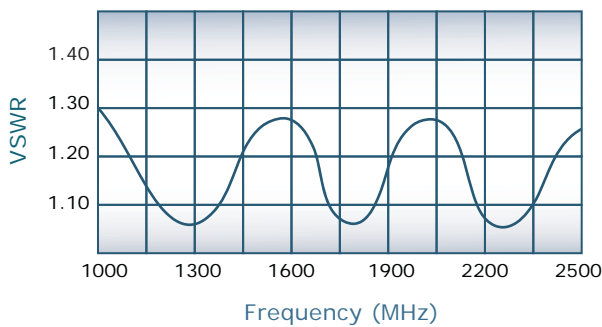
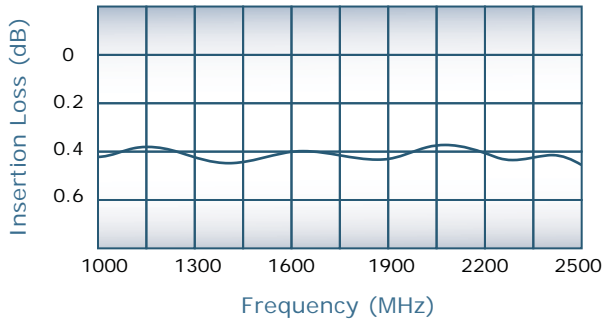
## 8-Way *Non-Isolated* Combiner/Divider

### Model D9462

Frequency:	1000 - 2500 MHz
Power:	100 W CW 1 kW Peak
Insertion Loss:	0.35 dB Max.
VSWR:	1.40:1 Max.
Phase Balance:	$\pm 4^\circ$ Max.
Amplitude Balance:	0.35 dB Max.



*For In-Building Applications*

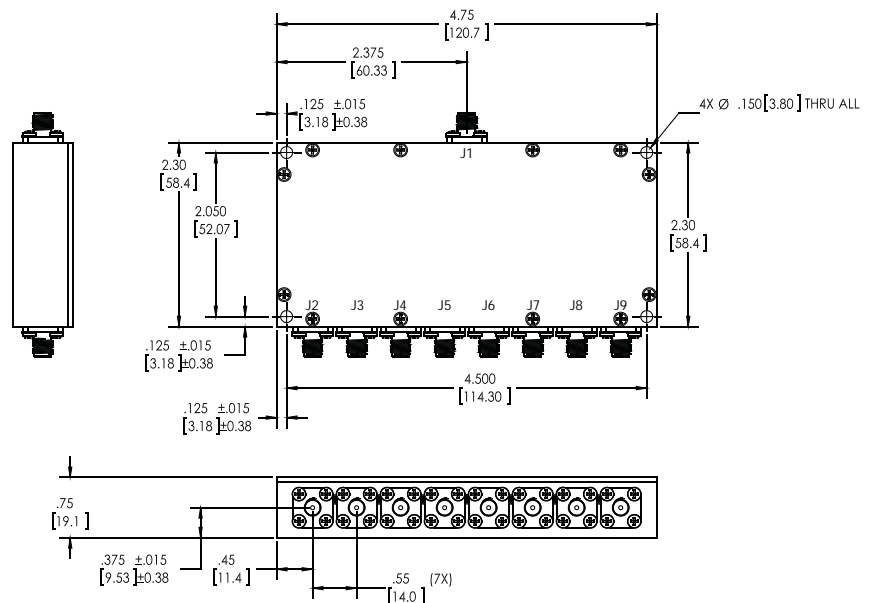


#### Notes

- All specifications guaranteed
- Test data provided with each unit shipped
- Alternate connector configurations upon request
- Operating Temperature: -55°C to +75°C
- Weight: 9 Ounces

#### Connector Configurations

Model	J1 (Sum Port)	J2-J9 (Input/Output)
D9462-102	SMA	SMA



Specifications subject to change without notice



**Send Us Your Specs for Custom Designs**