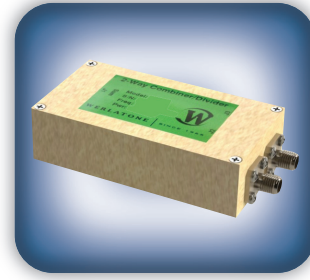




DECADES AHEAD[®]
high power RF devices

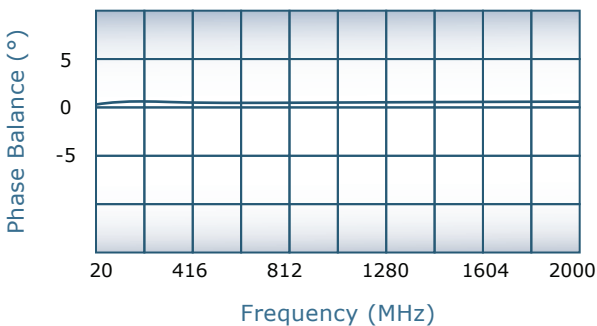
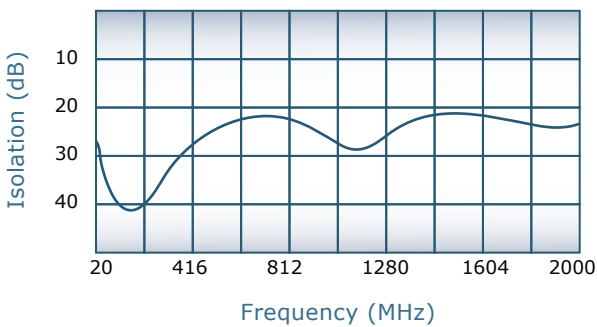
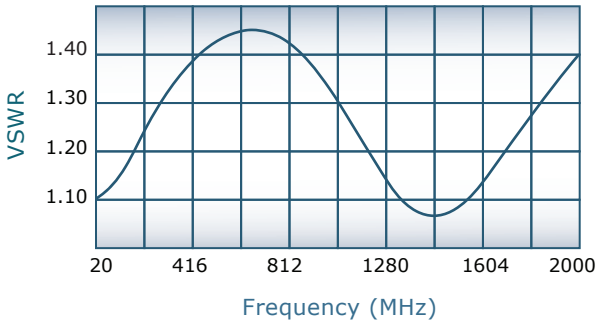
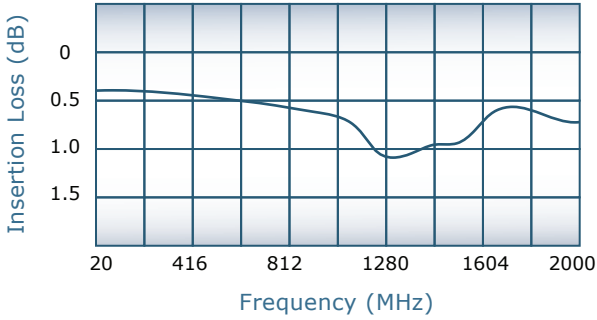
Werlatone[®], Inc.

17 Jon Barrett Road Patterson, New York 12563
T (845) 278 2220 www.werlatone.com
F (845) 278 3440 sales@werlatone.com



2-Way Combiner/Divider Model D8341

| | |
|--------------------|---------------|
| Frequency: | 20 - 2000 MHz |
| Power: | 20 W CW |
| Insertion Loss: | 1.2 dB Max. |
| VSWR: | 1.70:1 Max. |
| Isolation: | 15 dB Min. |
| Phase Balance: | ± 5° Max. |
| Amplitude Balance: | 0.3 dB Max. |



Notes

- All specifications guaranteed
- Test data provided with each unit shipped
- Operating Temperature: -55°C to +75°C

Connector Configurations

| Model | J1 (Sum Port) | J2,J3 (Input/Output) |
|-----------|---------------|----------------------|
| D8341-102 | SMA | SMA |

