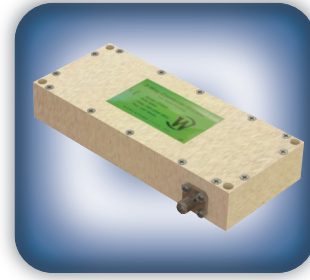




**DECADES AHEAD<sup>®</sup>**  
high power RF devices

**Werlatone<sup>®</sup>, Inc.**

17 Jon Barrett Road Patterson, New York 12563  
T (845) 278 2220      www.werlatone.com  
F (845) 278 3440      sales@werlatone.com



## 2-Way Combiner/Divider Model D7866

Frequency: 400 - 2500 MHz

Power: 100 W CW

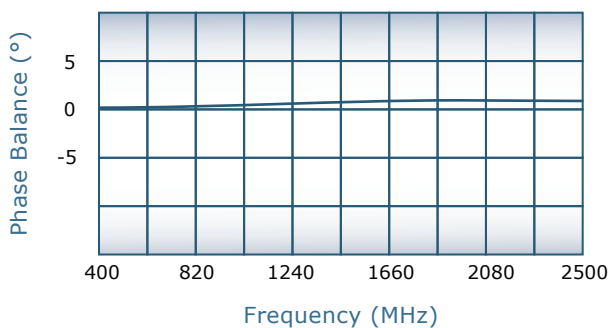
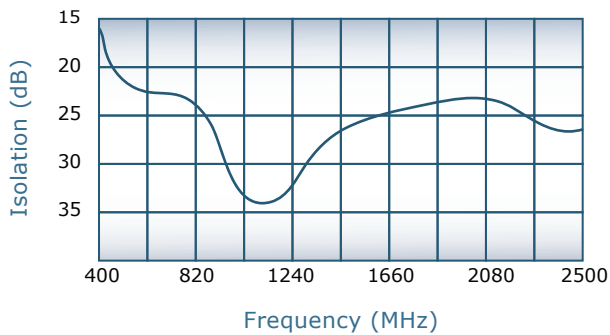
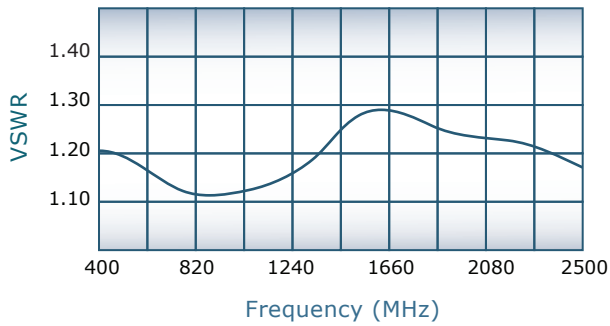
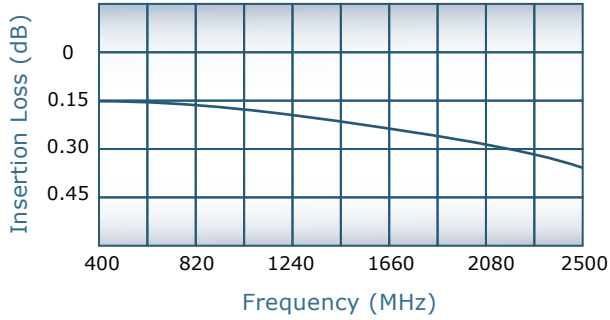
Insertion Loss: 0.4 dB Max.

VSWR: 1.35:1 Max.

Isolation: 12 dB Min. (400-500 MHz)  
15 dB Min. (500-2500 MHz)

Phase Balance:  $\pm 5^\circ$  Max.

Amplitude Balance: 0.2 dB Max.



**Notes**

- All specifications guaranteed
- Test data provided with each unit shipped
- Alternate connector configurations upon request
- Weight: 0.75 Pounds
- Operating Temperature: -55°C to +75°C

**Connector Configurations**

Model	J1 (Sum Port)	J2,J3 (Input/Output)
D7866-10	N Female	N Female
D7866-12	N Female	SMA
D7866-102	SMA	SMA

